



**HAL**  
open science

# On the Classification of Colored Textures From a Texture-Ranking Experiment: Observers Ability of Discrimination Quantification

Amadou Sawadogo, Dominique Lafon-Pham, Simplicie Dossou-Gbété

► **To cite this version:**

Amadou Sawadogo, Dominique Lafon-Pham, Simplicie Dossou-Gbété. On the Classification of Colored Textures From a Texture-Ranking Experiment: Observers Ability of Discrimination Quantification. International Journal of Statistics and Probability, 2020, 10 (1), pp.1. 10.5539/ijsp.v10n1p1 . hal-04662050

**HAL Id: hal-04662050**

<https://imt-mines-ales.hal.science/hal-04662050v1>

Submitted on 25 Jul 2024

**HAL** is a multi-disciplinary open access archive for the deposit and dissemination of scientific research documents, whether they are published or not. The documents may come from teaching and research institutions in France or abroad, or from public or private research centers.

L'archive ouverte pluridisciplinaire **HAL**, est destinée au dépôt et à la diffusion de documents scientifiques de niveau recherche, publiés ou non, émanant des établissements d'enseignement et de recherche français ou étrangers, des laboratoires publics ou privés.



Distributed under a Creative Commons Attribution 4.0 International License

# On the Classification of Colored Textures From a Texture-Ranking Experiment: Observers Ability of Discrimination Quantification

Amadou Sawadogo<sup>1</sup>, Dominique Lafon<sup>2</sup>, Simplicie Dossou-Gbété<sup>3</sup>

<sup>1</sup> Department of Mathematics and Computer, University of Félix Houphouët Boigny, Abidjan, Ivory Coast

<sup>2</sup> Ecole des Mines d'Alès, Site Hélio parc, Pau, France

<sup>3</sup> Université de Pau et des Pays de l'Adour, E2S UPPA, CNRS, LMAP, PAU, France. International Chair in Mathematical Physics and Applications (ICMPA-UNESCO Chair), University of Abomey-Calavi, Benin

Correspondence: Amadou Sawadogo, Department of Mathematics and Computer, University of Félix Houphouët Boigny, Postal address 22 BP 582 Abidjan 22, Ivory Coast. E-mail: amadou.sawadogo@gmail.com

Received: January 14, 2020 Accepted: November 9, 2020 Online Published: November 30, 2020

doi:10.5539/ijsp.v10n1p1 URL: <https://doi.org/10.5539/ijsp.v10n1p1>

## Abstract

This paper is devoted to the construction of Fechnerian scales on a physical dimension of investigated colored textures. For this purpose, we considered the extension of the Mallows-Bradley-Terry model for the analysis of the data collected from a contrast-sorting experiment. A likelihood ratio test procedure was proposed in order to choose between the two following hypotheses: discrimination and non-discrimination between the investigated stimuli. In addition, post-hoc analyzes allowed us to find out which of the stimuli differ from the others. Our findings indicate that the subjective attribute of visual contrast appears to be a psycho physical scale that maps to the physical scale corresponding to the Michelson contrast. Mainly, the estimates of the model index of discrimination parameter of the stimuli show that the ability of the observers to discriminate between the textures according to the visual contrast varies with respect to the color ranges and the textures types. According to the luminance contrasts ability of discrimination, the Isotropic texture type is the best, followed by the Random-dots texture type, then by the Horizontal grating type and the Vertical grating type is the least. The Fechnerian scales on the physical dimension of the Michelson contrast of the colored textures depend on the chromaticness of the colored textures phases and the texture types. The psycho physical method of identification would be the best when determining the related thresholds.

**Keywords:** Fechnerian scale, physical scale, colored texture, rank data, Michelson contrast, visual contrast, bridge sampling, likelihood ratio test, post-hoc test

## 1. Introduction

In contrast with the past, sensory properties of materials are subject to growing attention both in an hedonic and utilitarian point of view. In industrial sectors such as luxury, cosmetics or transports, the visual aspect of objects is a criterion of evaluation and decision in customer's choices. Effect colors (metallic and pearlescent) are now commonly used. Depending on the angle of view, they produce different visual feelings.

The classical color descriptors (Fairchild, 2013; Hunt & Pointer, 2011), *e.g.*, CIE Lab, CIE Luv, CIECAM02 etc, do not provide a complete representation of these effect colors and more generally on surfaces exhibiting a colored texture. It is now clearly established that our visual system is concerned not only with individual colors but also with contrasts. However, it remains unclear how to characterize visual similarities between textures belonging to the same type.

The purpose of this study was to construct Fechnerian scales on a physical dimension of stimuli capable of describing the behavior of the average observer with respect to the perceived contrast of colored textures types. The similarity relations between isochromatic colored textures poorly different regarding to their luminance level were investigated. To this end, the Michelson contrast is considered to be the physical continuum in the physical domain of the colored textures. The colored textures consisted of four types of texture (Random-dots textures, Isotropic textures, Horizontal gratings and Vertical grating) and three color ranges (red, green and yellow). Then, we conducted a softcopy experiment consisting in ranking the colored textures according to the attribute of visual contrast. Ties were permitted in the ranking experiment. The data thus collected are rank data with ties.

In the literature, many models of rank data have been proposed over the years. They could be categorized into four classes (Marden, 1995; Fligner & Verducci, 1986; Fligner & Verducci, 1988): (i) paired-comparison models, (ii) distance based-models, (iii) multistage models and (iv) order-statistics models. Applications of the models to real life situations can be found in the literature; for example, in (Marden, 1995; Critchlow & Fligner, 1991). In the statistical modeling of ranking

data, the paired comparison approach is widely used and relies upon a clear formulation of probabilities distribution models. The basic idea behind this approach, in particular the model considered for the analysis of the rank data is that, the observer reports their preferences only after having an unambiguous ranking, by starting with paired comparisons, with possibility of ties. In other words, the multiple pairwise judgments are consistent. Consistency means transitivity. Hence, each pair of stimuli will have a little triple of probability attached. Rao and Kupper (1967) and Davidson (1970) suggested particular parametrizations of the paired comparisons when extending the Bradley-Terry model to account for ties. The parametrization of the paired-comparisons assumed were Davidson's model (Davidson, 1970). The latter is defined as follows: choose either stimulus  $i$  or stimulus  $j$  respectively with probabilities  $\theta_{ij} = \pi_i / (\pi_i + \pi_j + \nu \sqrt{\pi_i \pi_j})$ ,  $\theta_{ji} = \pi_j / (\pi_i + \pi_j + \nu \sqrt{\pi_i \pi_j})$  and do not choose with probability  $\theta_{ij2} = \nu \sqrt{\pi_i \pi_j} / (\pi_i + \pi_j + \nu \sqrt{\pi_i \pi_j})$  with  $\nu \geq 0$ , where  $\pi_i$  denotes the "worth", an index of relative preference, of the  $i$ th stimulus and  $\nu \geq 0$  an index of discrimination which is, in our context, interpreted as a measure of difficulty of the population of observers to discriminate between the set of stimuli. From this point of view, we made use of the extension (Sawadogo et al., 2017) of the Mallows-Bradley-Terry ranking model for one block comparison consisting of all the stimuli of interest to analyze the collected ranking data.

This paper is organized as follows. Section 2 describes the apparatus, the investigated stimuli, the raw data set and indicates how they had been collected. Section 3 recalls the generalization of the Mallows-Bradley-Terry ranking model. In section 4, a likelihood ratio test has been first performed to answer the question of discernability of the stimuli. Secondly, post-hoc analyzes based on post-hoc tests have been applied to find out which stimuli differ from the others. Thirdly, we have addressed the construction of Fechnerian scales on the physical dimension of stimuli using different psycho physical methods and indicate how such scales differ. A discussion has been carried out where our findings are compared with recent studies in Section 5.

The data used for this study were collected by a softcopy experiment.

## 2. Apparatus, Stimuli and Procedure

### 2.1 Apparatus

Stimuli were presented on a color CRT monitor (Philips) with a refresh rate of 85 hertz and using the resolution 1600×1200 pixels. Prior to the experiments we had characterized and calibrated accurately the CRT monitor in order to control the colorimetric attributes of the displayed colors. The white point of the monitor has been set to the standard illuminant  $D_{65}$ . A colorimetric calibration with a PR650-spectroradiometer (Photo Research Inc. USA) of the CRT monitor allowed to display colored textures corresponding to predetermined colors physically expressed in the standard CIE1931 (Commission internationale de l'éclairage). notation  $(X, Y, Z)$ . The observers sat 60 centimeters away from the screen. The experimental environment has been strictly controlled. It was important to minimize spatial color interferences on the perception of the stimuli displayed on the monitor screen. The experiment were carried out under diffuse lighting conditions. The light source in the room was a courtesy light with a fluorescent tube (Just Normlicht Color Control Daylight 5000 kelvins) and a diffuser of light. The experiment took place in a blind room with the same neutral grey color for walls, ceiling and floor in order to avoid possible local variations of the ambient light. The monitor background was hidden by grey surfaces in order to reduce visual distractions (only the screen and the mouse were distinguishable from the background).

### 2.2 Stimuli and Contrast-Sorting Experiment

The experiment consisted in ranking isochromatic textures by a total of forty observers. The observers had a normal or corrected-to-normal visual acuity and a normal color vision. They were informed about the final purpose of the experiment. Prior to the start of the experiment, each observer had been trained in order to have him or her understand what we mean by visual contrast: we used series of colored textures of the same natural scene that exhibit different levels of visual contrast. After making sure that each observer understood the task, the experiment began. Each of the forty observers completed 12 trials. An isochromatic texture is characterized by its color range and the type of texture it belongs to. A color belonging to a given color range is described by its chromaticity coordinates and luminance  $(x, y, Y)$  in the well-known three-dimensional CIE XYZ color space (Bontou et al., 2000):  $(x, y)$  denotes its chromaticity coordinates and  $Y$  its luminance. A colored texture belonging to a given type of texture consists of two isochromatic colors *i.e.*, described by the two tristimulus coordinates  $(x_0, y_0, Y_0)$  and  $(x_0, y_0, Y_0 + \Delta Y)$ : a luminance value  $Y_0$  for each color range has been chosen as the reference for each color. Then we applied a luminance discrepancy  $\Delta Y = Y - Y_0$ . A Michelson contrast level  $M$  of a given colored texture is defined by  $M = |\Delta Y| / (Y_0 + 2 * |\Delta Y|)$ . A sample of the textures types is presented in Figure 1. A trial consisted in displaying simultaneously on the CRT monitor screen, 20 colored textures belonging to the same type of texture pattern and the same color range; then ranking them according to the appreciation of the visual contrast perceived between the two components of each colored texture (from the lowest visual contrast corresponding to a very little difference between the luminances of the two components to the highest visual contrast). The observers were asked to use integer from 1 to 20; rank 1 is assigned to the lowest visual contrast texture. Ties were permitted and expressed by assigning the same rank to the stimuli exhibiting the same visual contrast according to the

observers. The colored textures were randomly displayed on a uniform gray field for each trial. After an observer had completed a trial, he or she keyed his responses and finally clicked to ask for a new trial. The observers were free to use as much time as they found necessary for the set of 12 trials. For the 12 trials, the textures were presented to in a pseudo random order in order to avoid a familiarization: two successive trials present to the observers are necessarily composed of stimuli with different color ranges and different textures types. During the ranking experiment, it appeared that each observer took an average of 90 minutes for a complete round. The textures consisted of square uncompressed Bitmap images (200×200 pixels) with a color depth of 24 bits per pixel. They were displayed as a square of 5 centimeters × 5 centimeters without any resizing (5 degrees). Three color ranges (red, green and yellow) and four types of texture pattern (Random-dots texture, Isotropic texture, Horizontal grating and Vertical grating texture) had been investigated. The chromaticity coordinates and luminance of the considered color ranges in each color range are given in Table 1.

Table 1. The chromaticity coordinates and luminance of the three color ranges considered in the CIE 1931 standard color space

Tristimulus values	Red	Green	Yellow
$x_0$	0.51	0.29	0.39
$y_0$	0.33	0.54	0.49
$Y_0$ (candela per square meter)	15.56	20.28	84.83
$\lambda$ (nanometers)	675	550	570

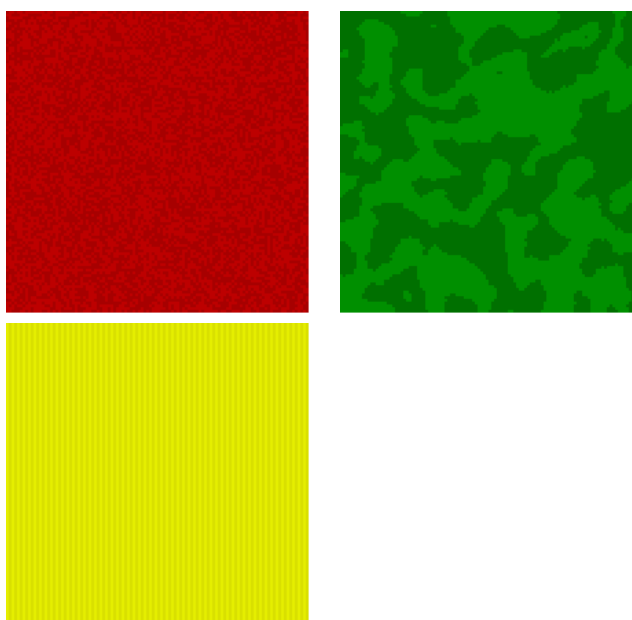


Figure 1. The investigated types of colored textures consisting of isochromatic colors: equal chromaticity coordinates  $(x; y)$  and different luminance coordinates  $Y$

The textures are identified according to their color ranges and the type of textures they belong to by two letters: the first letter denotes the color range and the latter the type of the textures. The Red, Green and Yellow color ranges are respectively identified by the following letters R, G and Y. The types of textures, namely Random-dot textures, Isotropic textures, Horizontal gratings and Vertical gratings are respectively identified by the letters R, I, H and V. Therefore, the indicator GR denotes the set of colored textures in the Green color range belonging to the Random-dots texture type; any colored texture of the set GR is identified by the prefix GR.

The collected data had been organized as follows: the data set consisted in all the elements of the set  $\{R, G, Y\} \times \{R, I, H, V\}$ , each with 40 rows (the observers) and 20 columns (the colored textures).

Finally, each data is described by the observers identifiers, the color range, the type of texture, the luminance discrepancies

$\Delta Y$  in colored textures, the Michelson contrast  $M$  levels associated to the luminance discrepancies and the ranks assigned by the observers to the colored textures.

The statistical model used for the analysis of the ranking data is described and defined in the section below.

### 3. The Extension of the Mallows-Bradley-Terry Ranking Model

As mentioned in Introduction, the paired comparison approach is the one considered. The basic idea behind this approach is that the observer reports their preferences only after having an unambiguous ranking, by starting with paired comparisons. We mean by unambiguous ranking, transitivity in the set of paired comparison.

Suppose that the paired comparison experiment involves  $q$  stimuli, where independent comparisons are made for the pair of stimuli  $\{i, j\}$ . It is assumed that ties are not permitted, and that the order of item presentation is unimportant. The basic parameters are then the  $q(q - 1)/2$  quantities  $\theta_{ij}$ , where for  $i < j$ ,  $\theta_{ij}$  denotes the probability that  $i$  is preferred to  $j$  in a paired comparison of these two stimuli. The Bradley-Terry model is given by  $\theta_{ij} = \pi_i / (\pi_i + \pi_j)$  where  $\pi_i > 0$  is the probability that the stimulus  $i$  is ranked lowest when the entire set of  $q$  stimuli are submitted for ranking.

In the most well studied case, there is simply one block consisting of all the stimuli of interest, and the resulting comparison is just a complete ranking of these stimuli, provided by each of  $n$  observers. To model the probability of such a ranking  $\mathbf{r}$  of  $q$  stimuli, Mallows (1957) proposes a natural extension of the Bradley-Terry paired comparison model. According to the Mallows-Bradley-Terry ranking model, the probability of the rank vector  $\mathbf{r}$

$$\mathbb{P}(\mathbf{r}; \boldsymbol{\pi}) = c(\boldsymbol{\pi}) \prod_{j=1}^q \pi_j^{q-r(j)}, \tag{1}$$

where  $c(\boldsymbol{\pi})$  stands for the normalizing constant. This result is well-known and called the Mallows-Bradley-Terry ranking model (Critchlow & Fligner, 1991).

Sawadogo et al. (2017) adapted the Mallows-Bradley-Terry ranking model to ties by considering the Davidson (1970) extension of the Bradley-Terry model. To account for ties in a paired comparisons experiment, Davidson proposed an extension of the Bradley-Terry model as follows: choose either stimulus  $i$  or stimulus  $j$  respectively with probabilities  $\theta_{ij} = \pi_i / (\pi_i + \pi_j + \nu \sqrt{\pi_i \pi_j})$ ,  $\theta_{ji} = \pi_j / (\pi_i + \pi_j + \nu \sqrt{\pi_i \pi_j})$  and do not choose with probability  $\theta_{ij2} = \nu \sqrt{\pi_i \pi_j} / (\pi_i + \pi_j + \nu \sqrt{\pi_i \pi_j})$  with  $\nu \geq 0$ , where  $\pi_i$  denotes the "worth", an index of relative preference, of the  $i$ th stimulus and  $\nu \geq 0$  an index of discrimination which is, in our context, interpreted as a measure of difficulty of the population of observers to discriminate between the set of stimuli. Notice that the Bradley-Terry model is obtained from the Davidson's when  $\nu = 0$ .

Let us consider a set of  $q$  items labeled by distinct numbers from 1 to  $q$ . The  $q$  items are submitted to an observer for ranking with ties. A ranking is obtained by making independently all the pairwise comparisons until having an unambiguous ranking. The resulting ranks vector  $\mathbf{r}$  is a finite sequence of integers of length  $q$  where each value belongs to the set of consecutive integers from 1 to  $q$ . Then the  $j$ -th component of  $\mathbf{r}$ , say  $\mathbf{r}(j)$ , is the rank assigned to the item labeled  $j$ . In what follows, we assume the following definitions which will be used to define the extension of the Mallows-Bradley-Terry ranking model that account for ties.

**Definition 1** Given a ranking  $\mathbf{r} = \{\mathbf{r}(j)\}_{j=1,2,\dots,q}$  of the set  $\mathcal{A}(q)$  of all rankings of  $q$  stimuli in which ties are possible and  $\mathbf{r}_+ = \max_{j=1,2,\dots,q} \mathbf{r}(j)$ . The pattern of ties associated with the ranking with ties  $\mathbf{r}$ , denoted  $\boldsymbol{\lambda}_r$ , is a vector of length  $\mathbf{r}_+$  defined by

$$\boldsymbol{\lambda}_r = (\lambda_r(1), \dots, \lambda_r(k), \dots, \lambda_r(\mathbf{r}_+)),$$

where  $\lambda_r(k) = \text{card}\{\mathbf{r} = k\}$  denotes the cardinality of the set  $\{\mathbf{r} = k\} = \{j \in \{1, 2, \dots, q\}; \mathbf{r}(j) = k\}$ ,  $\forall k = 1, 2, \dots, \mathbf{r}_+$ .

**Definition 2** Given a ranking  $\mathbf{r} = \{\mathbf{r}(j)\}_{j=1,2,\dots,q}$  of the set  $\mathcal{A}(q)$ . The mid-rank of stimulus  $i$ , denoted  $\mathbf{r}^*(i)$ , is defined by

$$\mathbf{r}^*(i) = \frac{\lambda_r\{\mathbf{r}(i)\} + 1}{2} + \sum_{k=1}^{\mathbf{r}(i)-1} \lambda_r(k), \forall i \in \{1, \dots, q\}.$$

The extension of the Mallows-Bradley-Terry model for ranking with ties is defined as follows.

**Definition 3** The generalization of the Mallows-Bradley-Terry model for ranking with ties is defined by the following probability mass function,

$$\mathbb{P}(\mathbf{r}; \boldsymbol{\pi}, \nu) = c(\boldsymbol{\pi}, \nu) \nu^{\frac{1}{2} \left\{ \sum_{k=1}^{\mathbf{r}_+} \lambda_r^2(k) - q \right\}} \prod_{j=1}^q \pi_j^{q-\mathbf{r}^*(j)}, \forall \mathbf{r} \in \mathcal{A}(q) \tag{2}$$

with

$$\log\{c(\boldsymbol{\pi}, \nu)\} = -\log\left[\sum_r \nu^{\frac{1}{2}\left\{\sum_{k=1}^{r_+} \lambda_r^2(k) - q\right\}} \prod_{j=1}^q \pi_j^{q-r^*(j)}\right],$$

where  $\mathcal{A}(q)$  denotes the sample space.

The parameter  $\pi_j, j \in \{1, 2, \dots, q\}$  denote the "worth", an index of relative preference, of the  $j$ -th stimulus,  $\pi_j > 0, \sum_{j=1}^q \pi_j = 1$ . Whereas, the parameter  $\nu$  is an index of discrimination and interpreted as a measure of difficulty of the complete population of the observers to discriminate between the stimuli being compared. One can remark that if  $\mathbf{r}$  is a ranking without ties, the model given by Equation (2) is exactly the classical Mallows-Bradley-Terry ranking model defined above by Equation (1) because one will have  $r_+ = q$  and  $\lambda_r(k) = 1, \forall k = 1, \dots, q$  leading to  $r^*(i) = r(i), \forall i = 1, \dots, q$ . The Fechnerian scale provides a continuous unidimensional dimensionless variable for preference. It expresses the degree of preference that an experimental observer shows.

The structural property  $\pi_j > 0, \sum_{j=1}^q \pi_j = 1$  on the parameters  $\pi_j, j = 1, 2, \dots, q$  allows re-parameterization of the model as follows:  $\theta_j = \log(\pi_j/\pi_q)$  for  $j = 1, 2, \dots, q$  and  $\gamma = \log(\nu)$  with  $\nu > 0$ . Following the re-parameterization stated above, the Mallows-Bradley-Terry model for ranking with ties given by Equation (2) can be rewritten in a manner given by the definition, viz.

**Definition 4** The Mallows-Bradley-Terry model for ranking with ties is defined as follows

$$\mathbb{P}(\mathbf{r}; \boldsymbol{\theta}, \gamma) = c(\boldsymbol{\theta}, \gamma) \exp\left[\frac{1}{2}\left\{\sum_{\alpha=1}^{r_+} \lambda_r^2(\alpha) - q\right\}\gamma + \sum_{j=1}^q \left\{q - r^*(j)\right\}\theta_j\right], \forall \mathbf{r} \in \mathcal{A}(q) \tag{3}$$

where  $c(\boldsymbol{\theta}, \gamma) = \left(\sum_s \exp\left[\frac{1}{2}\left\{\sum_{\alpha=1}^{s_+} \lambda_s^2(\alpha) - q\right\}\gamma + \sum_{j=1}^q \left\{q - s^*(j)\right\}\theta_j\right]\right)^{-1}$  denotes the normalizing constant.

The advantage of this re-parameterization is that one obtains a regular curved exponential family model (David & Mark, 2005) with  $q$  dimensions and the statistic  $[(q - r^*(j))_{j \in \{1, 2, \dots, q-1\}}, 1/2\{\sum_{\alpha=1}^{r_+} \lambda_r^2(\alpha) - q\}]$  is a sufficient statistic for the model parameter  $(\boldsymbol{\theta}, \gamma)$  vector.

Throughout the remainder of the paper, we will use the extension of the Mallows-Bradley-Terry ranking model in the form given by Equation (3).

**Proposition 1** The log-likelihood function  $\mathcal{L}_n(\boldsymbol{\theta}, \gamma)$  of the canonical parameters  $(\boldsymbol{\theta}, \gamma)$ , given an iid sample of rankings with ties  $\mathbf{r}_i, i \in \{1, 2, \dots, n\}$  is

$$\mathcal{L}_n(\boldsymbol{\theta}, \gamma) = \sum_{j=1}^q \theta_j \sum_{i=1}^n \left\{q - r_i^*(j)\right\} + \frac{1}{2}\gamma \left[-nq + \sum_{i=1}^n \left\{\sum_{\alpha=1}^{r_{i+}} \lambda_{r_i}^2(\alpha)\right\}\right] + n \log\{c(\boldsymbol{\theta}, \gamma)\}. \tag{4}$$

#### 4. Estimation of the Stimuli Worth Parameters and Population Index of Discrimination

##### 4.1 Likelihood Ratio Testing: Discrimination Versus Non-discrimination

From the Davidson's model stated above, the probability of do not choose  $\theta_{i2} = \nu \sqrt{\pi_i \pi_j} / (\pi_i + \pi_j + \nu \sqrt{\pi_i \pi_j})$  with  $\nu \geq 0$  tends to 1 when  $\nu$  tends to infinity. The setting  $\nu = 0$  corresponds to a certain discrimination. The non-discrimination means that there is an equal probability of choosing either one or the other of both the two stimuli, whatever the concerned stimuli; which leads to  $\nu > 0, \forall j \in \{1, 2, \dots, q\}, \pi_j = 1/q$ . Thus, the question of discrimination of the stimuli is answered by making an hypothesis testing: the hypothesis of discrimination of the textures versus the hypothesis of non-discrimination of the textures. We were interested in testing the null hypothesis  $H_0 : \pi_i = 1/q, \forall i \in \{1, 2, \dots, q\}, \nu > 0$  which corresponds to non-discrimination between the stimuli, versus the alternative hypothesis  $H_1 : \exists i; \pi_i \neq 1/q, \nu > 0$  which means discrimination between them. A likelihood ratio test based on the ratio

$$\Lambda_n = \frac{\max_{\gamma} \mathcal{L}_n(\boldsymbol{\theta}_0, \gamma)}{\mathcal{L}_n(\widehat{\boldsymbol{\theta}}, \widehat{\gamma})}, \tag{5}$$

where  $\mathcal{L}_n(\boldsymbol{\theta}, \gamma) = \exp\{l_n(\boldsymbol{\theta}, \gamma)\}$  denotes the likelihood of the model parameter vector  $(\boldsymbol{\theta}, \gamma)$ , is obtained by using  $-2 \log \Lambda_n$  as the test statistic. Under  $H_0$ , the statistic  $-2 \log \Lambda_n$  has an approximate  $\chi^2(q - 1)$  distribution with  $q - 1$  degrees of freedom when  $n$  tends to infinity. The null hypothesis  $H_0$  is rejected if  $-2 \log \lambda_n > \chi^2_{1-\alpha}(q - 1)$  where the quantities  $\lambda_n$  and

$\chi^2_{1-\alpha}(q-1)$  are the statistic  $\Lambda_n$  value and the  $(1-\alpha)$  quantile of the chi-square distribution with  $q-1$  degrees of freedom respectively. Equivalently,  $H_0$  is rejected if  $\alpha > p$ -value.

**Proposition 2** Given  $(\widehat{\theta}, \widehat{\gamma})$  (resp.  $(\theta_0, \widehat{\gamma}_0)$ ) the Maximum Likelihood Estimates of the canonical parameter vector  $(\theta, \gamma)$  (resp.  $(\theta_0, \gamma)$  under  $H_0$ ). Then

$$\log \Lambda_n = n \log \left\{ \frac{c(\widehat{\theta}, \widehat{\gamma})}{c(\theta_0, \widehat{\gamma}_0)} \right\} + \sum_{i=1}^n \left[ \frac{1}{2} \left\{ \sum_{\alpha=1}^{r_{i+}} \lambda_{r_i}^2(\alpha) - q \right\} (\widehat{\gamma}_0 - \widehat{\gamma}) + \sum_{j=1}^q \left\{ q - r_i^*(j) \right\} (\widehat{\theta}_{0,j} - \widehat{\theta}_j) \right].$$

It results from  $\theta_{0,j} = 0, \forall j \in \{1, 2, \dots, q\}$  that

$$\log \Lambda_n = n \log \left\{ \frac{c(\widehat{\theta}, \widehat{\gamma})}{c(\theta_0, \widehat{\gamma}_0)} \right\} + \sum_{i=1}^n \left[ \frac{1}{2} \left\{ \sum_{\alpha=1}^{r_{i+}} \lambda_{r_i}^2(\alpha) - q \right\} (\widehat{\gamma}_0 - \widehat{\gamma}) - \sum_{j=1}^q \left\{ q - r_i^*(j) \right\} \widehat{\theta}_j \right], \tag{6}$$

given  $r_1, r_2, \dots, r_n$ .

The computation of the ratio  $c(\widehat{\theta}, \widehat{\gamma})/c(\theta_0, \widehat{\gamma}_0)$  of the normalizing constants involved in Equation (6) is required and involved sums with a huge number of terms. There is no closed form analytical expression for the calculation of this ratio. To overcome this difficulty, we use the path sampling technique ; see (e.g., Hunter and Handcock, 2012). This technique is a particular case of a Monte Carlo method called bridge sampling ( e.g., Meng and Wong, 1996). Hereafter, the following results describe how it works in our case.

**Lemma 1** Let  $\varphi : [0, 1] \rightarrow \mathbb{R}^q$  be a smooth mapping defined as  $\varphi(u) = (\theta(u), \gamma(u)), \forall u \in [0, 1]$  such that  $\varphi(0) = (\theta_0, \widehat{\gamma}_0)$  and  $\varphi(1) = (\widehat{\theta}, \widehat{\gamma})$ . Then,

$$\mathbb{E}_{\varphi(u)} \left\{ \frac{d}{du} \log \mathbb{P}(\mathbf{r}; \varphi(u)) \right\} = \frac{d}{du} \sum_{\mathbf{r}} \mathbb{P}(\mathbf{r}; \varphi(u)) = 0.$$

**Proposition 3** One has,

$$\log \left\{ \frac{c(\varphi(1))}{c(\varphi(0))} \right\} = \mathbb{E} \left\{ \mathbf{Z} \cdot \left( \frac{d\varphi}{du} \circ U \right) \right\}, \tag{7}$$

where

$$\mathbf{Z}(\mathbf{r}) = \left[ \left\{ q - r^*(j) \right\}_{j \in \{1, 2, \dots, q-1\}}, \frac{1}{2} \left\{ \sum_{k=1}^{r_+} \lambda_r^2(k) - q \right\} \right]$$

is a sufficient statistic for the parameter vector  $\varphi(u) = (\theta(u), \gamma(u))$ . The expectation  $\mathbb{E}$  is taken with respect to the joint distribution of the random vector  $(U, \mathbf{r})$ , where  $U$  is uniform  $[0, 1]$  and  $\mathbf{r} \mid U = u$  is distributed according to  $\mathbb{P}(\mathbf{r}; \varphi)$  with parameter  $\varphi(U)$ .

**Corollary 1** Equation (7) suggests that  $\log \left\{ \frac{c(\varphi(1))}{c(\varphi(0))} \right\}$  could be estimated by drawing a sample  $(u_1, \mathbf{r}_1), \dots, (u_N, \mathbf{r}_N)$  from the joint distribution  $(U, \mathbf{r})$ , then calculating the sample average

$$\frac{1}{N} \sum_{k=1}^N \mathbf{Z}(\mathbf{r}_k) \frac{d\varphi}{du}(u_k).$$

In our implementation of the path sampling method, we considered  $\varphi(u) = (\theta_0, \widehat{\gamma}_0) + u \cdot [(\widehat{\theta}, \widehat{\gamma}) - (\theta_0, \widehat{\gamma}_0)]$  which corresponds to a linear path from  $(\theta_0, \widehat{\gamma}_0)$  to  $(\widehat{\theta}, \widehat{\gamma})$ .

#### 4.2 Rank Data Analysis and Fechnerian Scales Constructing

The data analysis by means of a fixed effects additive model showed that the visual contrast is a psychophysical scale corresponding to the physical scale determined by the Michelson contrast of the colored textures (Sawadogo et al., 2014). Furthermore, one has graphically noticed that the ability of the observers to discriminate between the colored textures according to the visual contrast varies according to the color ranges and the textures types. But, we have quantified neither the ability of discrimination of the set of the observers nor established a classification of the texture types and/or the color ranges. In the present paper, our objective is to provide some answers to these questions and make assumptions about the related Fechnerian sensory scales.

The model parameter vector  $(\pi, \nu)$  has been estimated by means of Monte Carlo MM-algorithm method; see, Sawadogo et al.(2017). A bootstrap-t confidence interval has been implemented for the calculation of the confidence intervals

$CI_{1-\alpha}(\boldsymbol{\pi}, \nu)$  of the model parameter vector  $(\boldsymbol{\pi}, \nu)$  at the significance level of  $\alpha = 5\%$ . For this purpose, we wrote some own codes using the R software (R Core Team, 2020). The results of the model parameter vector  $(\boldsymbol{\pi}, \nu)$  estimates are available in Appendix 2. In multiple regression, the multiple correlation coefficient  $R^2$  is often used to measure the percentage of variation in the data that is explained by the regression model. An analogous quantity, in our context, is the percentage of nonuniformity  $R^2$  in the data that is explained by the model, see, e.g., Marden, 1995. See Appendice 3 for the definition of the  $R^2$  and its values in our data. The results show that the model fits well all the data.

Figure 2, Figure 3 and Figure 4 depict the variations of the Bradley-Terry-Luce parameters  $(\boldsymbol{\pi}_j)_{j=1,2,\dots,q}$  of the textures with respect to its Michelson contrast values (M). The curves in the mentioned Figures are obtained by making use of the loess() function of R Software. The estimates of the colored textures worth parameters  $\boldsymbol{\pi}_j$ ,  $j \in \{1, 2, \dots, q\}$  increase when its corresponding Michelson contrast levels decrease whatever the signs of their luminance discrepancies  $\Delta Y$ . Thus, an ordering relation based on the Michelson contrasts of the colored textures always corresponds to the ordering obtained during the psychophysical experiments whatever the type of colored texture and the color range. This suggests to consider the visual contrast as a psycho physical scale corresponding to the physical scale determined by the textures' Michelson contrasts M. This result is coherent with one found in (Sawadogo et al, 2014).

The likelihood ratio tests of  $H_0$  versus  $H_1$  result in the reject of  $H_0$  at a significance level of  $\alpha = 0.05$  for all the observed data since the  $p$ -values (see, Appendice 4) are all less than  $\alpha = 0.05$ . It comes that, all the observers were capable to discriminate between all the colored textures according to the visual contrast at a significance level of 5%.

From the likelihood ratio tests, significant differences in luminance contrasts are detected between the colored textures whatever the color range and the texture type. Given a color range and a texture type, it is necessary to find out which colored textures differ from the others (Dzhafarov & Perry, 2014). Therefore, the hypotheses to test are  $H'_0 : m_k = m_j$ ,  $k \neq j$  vs  $H'_1 : m_k \neq m_j$ , where  $m_k$  represents the medians of the stimuli  $k$ . A Conover post-hoc test (Conover, 1999) with  $p$ -values adjustment according to the Holm procedure (Holm, 1979) has been used. To this end, we make use of the PMCMRplus (Pohlert, 2019) package available in R software. The results of the multiple paired comparisons tests are available in Appendix 5: box-whisker plot for each of the colored textures belonging to a given color range and texture type is plotted. The range of the whiskers indicate the extremes. Letter symbols are depicted on top of each box. Different letters indicate significant differences between groups determined using  $p$ -values at the selected level of  $\alpha = 5\%$ .

The estimates of the model index of discrimination parameter  $\nu$  differ from a colored texture to another whatever the type of the color range(see, Figure 5). This explains that the observers ability to discriminate between the colored textures according to the visual contrast varies according to the color ranges and the texture types. The probability of do not choose tends to 1 when  $\nu$  tends to infinity; this probability tends to 0 when  $\nu$  tends to 0: the smaller the values of  $\nu$ , the better the ability of discrimination between the textures. The estimates of the index of discrimination  $\nu$  are generally small in the green color range, indicating that discrimination is best in this color range. Moreover, one can classify either the textures with respect to the pattern they belong to for a given color range or the color ranges given the texture type basing on the index of discrimination  $\nu$ . For instance, in the green color range, the Isotropic textures are the best discriminated with a value of  $\widehat{\nu} = 0.6027$ , secondly the Random-dot textures ( $\widehat{\nu} = 0.7273$ ), thirdly the Horizontal gratings ( $\widehat{\nu} = 1.2114$ ) and finally Vertical gratings ( $\widehat{\nu} = 1.3243$ ). This holds true for both of the red color range and the yellow color ones.

Whatever the texture type, the sense of perception of the set of observers which determined their ability of discrimination is sharper in the green color range than the other color range. Then, follows the red color range and finally the yellow color range, except in the type of Isotropic textures. In this texture type, the yellow color range comes before the red one.

The construction of Fechnerian scales on physical dimensions of stimuli relies on the concept of threshold, namely absolute threshold and discrimination threshold. Fundamentally, there are two kinds of task that are used to obtain thresholds (Dzhafarov & Colonius, 1999; Pelli & Farell, 1995): classification and adjustment. In the formers, the experimenter controls the stimulus and the observer makes a judgment based on the resulting percept whereas in the latters the observer adjusts the stimulus to satisfy a perceptual criterion specified by the experimenter. Since the task of adjustment is subjective, classification tasks would be suitable for the determination of those thresholds. In the literature, three kinds of classification are widely used: yes/no, two-alternative forced choice (2afc), and identification. All three call for the observer to classify stimuli (or their subjective responses). Applying these three kinds of methods to determine the thresholds, the identification one would give best results; see, e.g., Pelli & Farell, 1995. The drawback of the 2afc is that because the observer has only two alternatives and thus will be right half the time even if the luminance contrast is invisible, a relatively large number of trials is required to obtain a good threshold estimate. This method would give good results after the identification task. The observer in a yes/no experiment can't avoid introducing an internal subjective criterion in deciding whether each faint ambiguous percept deserves a 'yes' or a 'no'. This task would be used as a last resort.



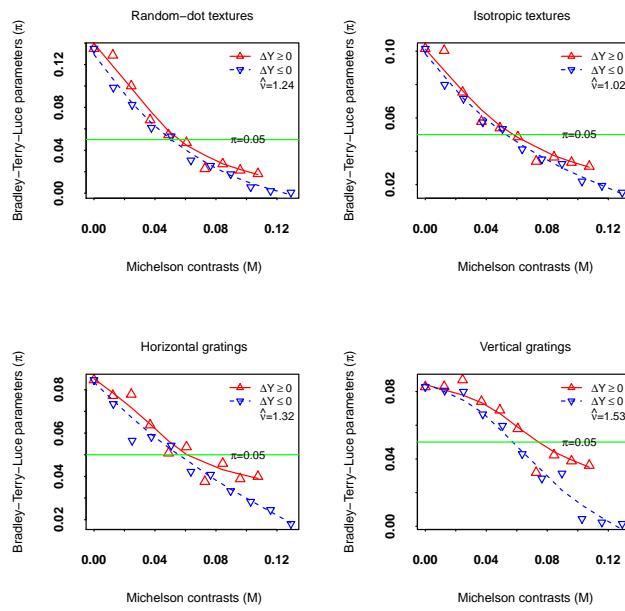


Figure 2. Variation of the Bradley-Terry-Luce parameters  $(\pi_j)_{j=1,2,\dots,q}$  with respect to its Michelson contrast levels M in the Red color range

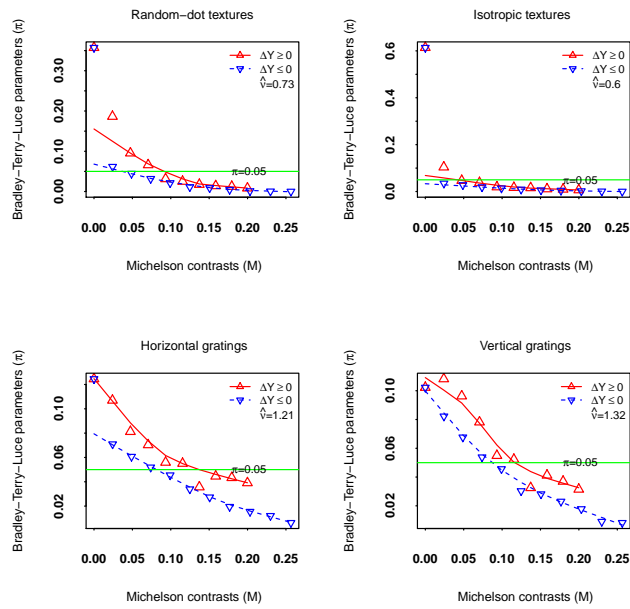


Figure 3. Variation of the Bradley-Terry-Luce parameters  $(\pi_j)_{j=1,2,\dots,q}$  with respect to its Michelson contrast levels M in the Green color range

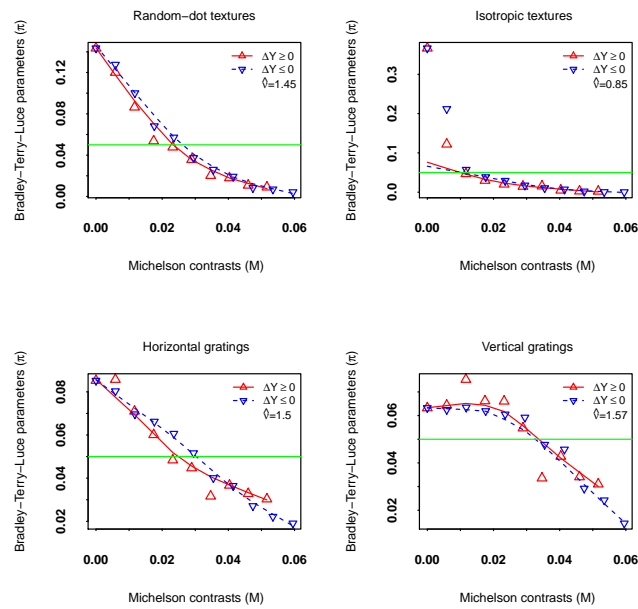


Figure 4. Variation of the Bradley-Terry-Luce parameters ( $\pi_j$ ) $_{j=1,2,\dots,q}$  with respect to its Michelson contrast levels M in the Yellow color range

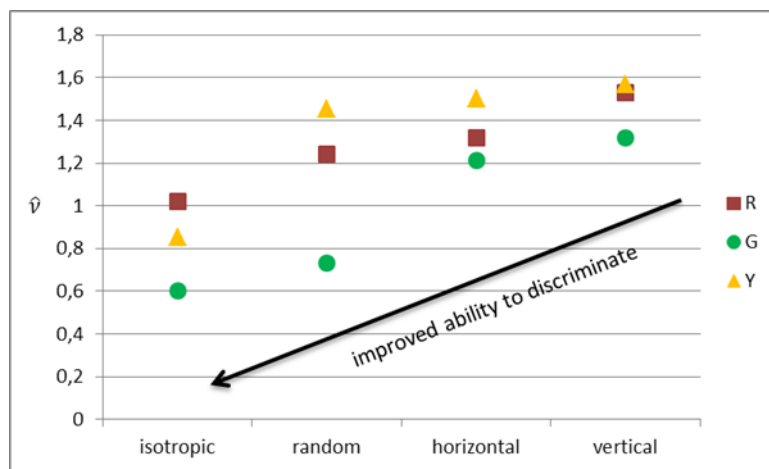


Figure 5. Luminance contrasts ability of discrimination versus investigated colored textures patterns

### 5. Discussion

The findings of this study clearly show that the ability of discrimination of the luminance contrast in the chromatic textures varies according to the color ranges and the textures patterns. The observers ability of discrimination is sharper in the green color range, followed by the red color range and finally the yellow color range, except in the type of Isotropic textures. In this type of texture, the visual perception is highest in the green color range, followed by yellow color range and finally the red one. Thus, it is sharper to detect luminance contrast in green textures than the others ranges. This result supports the hypothesis that color information is processed independently from many luminance-based tasks (Livingston & Hubel, 1987).

Whatever the color range, the ability of discrimination is best in the type of Isotropic textures; followed successively by the Random-dots textures type and the Horizontal gratings type, and finally the Vertical gratings ones. It results that luminance

contrast detection in chromatic images does not depend only on the luminance and chromatic attributes. This result is in agreement with the ones obtained by (Gegenfurtner & Kiper, 1990) who studied *the contrast detection in luminance and chromatic noise*. They show that it is incorrect to assume that psychophysical performance is always determined by the activity of just a luminance and a chromatic mechanism. Therein, they demonstrated the existence of additional mechanisms that determine performance in detection of contrast. They concluded that the possible involvement of these mechanisms must be considered when one interprets the results of other visual tasks. Our data support the hypothesis that the importance of color to visual performance can be revealed if chromatic and luminance variations are both present in visual targets (Gur & Akri, 1992). Moreover, Gur & Akri have shown that when color and luminance contrasts are combined, human contrast sensitivity is enhanced at all spatial frequencies tested and that there is a substantial facilitatory interaction between the chromatic and achromatic systems.

A large-sample test based on the likelihood ratio shows that the sense of perception of the set of observers were sharp enough to detect the existing luminance contrast difference. Furthermore, one has been interested in testing whether  $m_i = m_j$  across pairs of stimuli (see, e.g., Dzhafarov & Perry, 2014) via post-hoc tests. Those tests allowed us to find out which colored textures differ from the others. The data analysis gives rise to a sensory scale that shows a monotonic functional relationship with the Michelson contrast on which the ranking experiment is based: the shapes of the curves in Figs. 2-4 of the Bradley-Terry-Luce parameters ( $\pi$ ) versus the Michelson contrast (M) of the colored textures indicate higher preference for lower contrast. We recall that the observers have ranked the stimuli according to their appreciation of the perceived visual contrast, from the lowest contrast to the highest contrast. They were asked to use integer from 1 to 20; rank 1 is assigned to the lowest visual contrast texture. Therefore, in the context of our experimentation, preference parameter  $\pi_i$  is referred to luminance contrast sensitivity for stimuli  $i$ . Thus, higher preference means lower luminance contrast sensitivity. This is what the shapes of the curves in Figs. 2-4 render. In short, the Fechnerian scales on the physical dimension of the colored textures depend on the chromaticness of the colored phases of textures and the texture types. The psycho physical method of identification would be the best when determining the related thresholds.

During the ranking experiment, it appeared that each observer took an average of 90 minutes for a complete round, which is a bit long, even with the remarkable ability of chromatic adaptation that has the human visual system. Indeed, fatigue impairs observer's perception. The color space used for the physical description of the colored textures is the CIE 1931 standard observer using 2 degrees and the formula of contrast used is the Michelson one.

### Acknowledgements

The authors are grateful to the referees.

### References

- Bonton, P., Fernandez-Maloigne, C., & Trémau, A. (2000). *Image numérique couleur (De l'acquisition au traitement)*. Dunod, Paris.
- Chaudhuri, A. (2011). *Fundamentals of sensory perception*. Don mills, Ont: Oxford University Press.
- Conover, W. J. (1999). *Practical Nonparametric Statistics* (3rd ed.). Wiley.
- Critchlow, E. D., & Fligner, A. M. (1991). Paired comparison, triple comparison, and ranking experiments as generalized linear models, and their implementation on GLIM. *Psychometrika*, 56, 517–533.
- CIE (1926). *Commission internationale de l'Eclairage Proceedings, 1924/*. Cambridge: Cambridge University Press.
- Davidson, R. R. (1970). On extending the Bradley-Terry Model to accommodate ties in paired comparison experiments. *Journal of the American Statistical Association*, 65, 317–328. <https://doi.org/10.1080/01621459.1970.10481082>
- Dzhafarov, E. N., & Colonius, H. (1999). Fechnerian metrics in unidimensional and multidimensional stimulus spaces. *Psychonomic Bulletin Review*, 6, 239-268. <https://doi.org/10.3758/BF03212329>
- Dzhafarov, E. N., & Colonius, H. (2006). Reconstructing distances among objects from their dis-criminability. *Psychometrika*, 71, 365-386. <https://doi.org/10.1007/s11336-003-1126-9>
- Dzhafarov, E. N., & Perry, L. (2014). Perceptual matching and sorites: Experimental study of an ancient Greek paradox. *Attention, Perception, & Psychophysics*, 76, 2441-2464. <https://doi.org/10.3758/s13414-014-0711-6>
- Fairchild, M. D. (2013). *Colour appearance models*. Hoboken, Nj: Wiley.
- Falmagne, J-C. (1985). *Elements of Psychophysical Theory*. Oxford University Press, Inc. <https://doi.org/10.1002/9781118653128>
- Fligner, M. A., & Verducci, J. S. (1986). Distance Based Ranking Models. *Journal of the Royal Statistical Society*, 48,

359–369. <https://doi.org/10.1111/j.2517-6161.1986.tb01420.x>

- Fligner, M. A., & Verducci, J. S. (1988). Multistage Ranking Models. *Journal of the Royal Statistical Society*, 83, 892–901. <https://doi.org/10.1080/01621459.1988.10478679>
- Gur, M., & Akri, V. (1992). Isoluminant stimuli may not expose the full contribution of color to visual functioning: Spatial contrast sensitivity measurements indicate interaction between color and luminance processing. *Vision Res.*, 32, 1253-1262. [https://doi.org/10.1016/0042-6989\(92\)90220-D](https://doi.org/10.1016/0042-6989(92)90220-D)
- Gegenfurtner, K. R., & Kiper, D. C. (1992). Contrast detection in luminance and chromatic noise. *J. Opt. Soc. Am. A*, 9, 1880-1888. <https://doi.org/10.1364/JOSAA.9.001880>
- Holm, S. (1979). A Simple Sequentially Rejective Multiple Test Procedure. *Scandinavian Journal of Statistics*, 6, 65–70.
- Hunt, R. W. G., & Pointer, M. R. (2011). *Measuring Colour* (4 ed.). Chichester, UK: John Wiley & Sons.
- Hunter, D. R., & Handcock, M. S. (2012). Inference in curved exponential family models for networks. *Journal of Computational and Graphical Statistics*, 15, 565–583. <https://doi.org/10.1002/9781119975595>
- Iverson, G., & Luce, R. D. (1998). *The Representational Measurement Approach to Psychophysical and Judgmental Problems, Measurement, Judgment, and decision Making*, by Academic Press. <https://doi.org/10.1016/B978-012099975-0/50003-8>
- Livingstone, M., & Hubel, D. H. (1987). Psychophysical evidence for separate channels for the perception of form, color, movement and depth. *Neuroscience*, 7, 3416-3468. <https://doi.org/10.1523/JNEUROSCI.07-11-03416.1987>
- Marden, J. I. (1995). *Analysing and Modeling Rank Data*. London: Chapman and Hall.
- Meng, X.-L., & Wong, W. H. (1996). Simulating ratios of normalizing constants via a simple identity: A theoretical exploration. *Statistica Sinica*, 6, 831-860.
- Palmer, S. E. (2002). *Vision Science: photons to phenomenology (third printing)*. The MIT Press. ISBN 0-262-16183-4.
- Pelli, D. G., & Farell, B. (1995). *Psychophysical methods*. In Handbook of optics (2nd ed.), Vol. 1 ted. M. Bass, E.W. Van Stryland, D. R. Williams, & W. L. Wolfe, pp. 29.1- 29.13. McGraw-Hili, New York.
- Pohlert, T. (2019). *PMCMRplus: Calculate Pairwise Multiple Comparisons of Mean Rank Sums Extended*. R package version 1.4.2.
- R Core Team. (2020). R: A Language and Environment for Statistical Computing, R Foundation for Statistical Computing, Vienna.
- Robert, C. (1996). *Méthodes de Monte Carlo par chaînes de Markov*, Economica.
- Reinhart, E., Khan, E. A., Akyez, A. O., & Johnson, G. (2008). *Imaging: Fundamentals and applications*. A K Peters/CRC Press.
- Sawadogo, A., Lafon, D., & Dossou-Gbété, S. (2014). Statistical analysis of rank data from a visual matching of colored textures. *Journal of Applied Statistics*, 41(11), 2462-2482. <https://doi.org/10.1080/02664763.2014.920775>
- Sawadogo, A., Dossou-Gbété, S., & Lafon, D. (2017). Ties in one block comparison experiments: a generalization of the Mallows-Bradley-Terry ranking model. *Journal of Applied Statistics*, 44(14), 2621-2644. <https://doi.org/10.1080/02664763.2016.1259400>
- Wandell, B. A. (1995). *Foundation of vision*. Sinauer Associates, Incorporated.

## Appendix

### 1. Proofs of Propositions

#### 1.1 Proofs of Proposition 1

Let  $\mathbf{r}_i$ ,  $i \in \{1, 2, \dots, n\}$  be a sample of rankings with ties independent and identically distributed as the Mallows-Bradley-Terry distribution of ranking with ties  $\mathbb{P}(\mathbf{r}; \boldsymbol{\theta}, \gamma)$ . The log-likelihood of the canonical parameter vector  $(\boldsymbol{\theta}, \gamma)$  is given

by

$$\begin{aligned} \mathcal{L}_n(\boldsymbol{\theta}, \gamma) &= \sum_{i=1}^n \mathbb{P}(\mathbf{r}_i; \boldsymbol{\theta}, \gamma) \\ &= \sum_{j=1}^q \boldsymbol{\theta}_j \sum_{i=1}^n \{q - \mathbf{r}_i^*(j)\} + \frac{1}{2} \gamma \left[ -nq + \sum_{i=1}^n \left\{ \sum_{k=1}^{r_{i+}} \lambda_{r_i}^2(k) \right\} \right] + n \log\{c(\boldsymbol{\theta}, \gamma)\}, \end{aligned}$$

with  $\log\{c(\boldsymbol{\theta}, \gamma)\} = -\log\left(\sum_s \exp\left[\frac{1}{2}\left\{\sum_{k=1}^{s+} \lambda_s^2(k) - q\right\}\gamma + \sum_{j=1}^q \{q - s^*(j)\}\boldsymbol{\theta}_j\right]\right)$ .

1.2 Proofs of Proposition 3

Indeed, the model defined by Equation (3) can be rewritten

$$\mathbb{P}(\mathbf{r}; \varphi(u)) = \exp\left[{}^t\mathbf{Z}(\mathbf{r}) \cdot \varphi(u) - \log\{c(\varphi(u))\}\right].$$

We have,

$$\frac{d}{du} \mathbb{P}(\mathbf{r}; \varphi(u)) = {}^t \nabla_{\varphi} \mathbb{P}(\mathbf{r}, \varphi(u)) \cdot \frac{d\varphi(u)}{du},$$

and,

$${}^t \nabla_{\varphi} \mathbb{P}(\mathbf{r}; \varphi(u)) = \left[ {}^t\mathbf{Z}(\mathbf{r}) - \frac{1}{c(\varphi(u))} {}^t \nabla_{\varphi} c(\varphi(u)) \right] \cdot \mathbb{P}(\mathbf{r}; \varphi(u)).$$

Then,

$$\frac{d}{du} \mathbb{P}(\mathbf{r}, \varphi(u)) = \left[ {}^t\mathbf{Z}(\mathbf{r}) - \frac{1}{c(\varphi(u))} {}^t \nabla_{\varphi} c(\varphi(u)) \right] \frac{d\varphi(u)}{du} \cdot \mathbb{P}(\mathbf{r}; \varphi(u)).$$

It results that, using Lemma 1,

$$\sum_r \frac{d}{du} \mathbb{P}(\mathbf{r}; \varphi(u)) = 0$$

is equivalent to,

$$\frac{1}{c(\varphi(u))} {}^t \nabla_{\varphi} c(\varphi(u)) \frac{d\varphi(u)}{du} = \mathbb{E}_{\varphi(u)} \left\{ {}^t\mathbf{Z} \frac{d\varphi(u)}{du} \right\}.$$

By integrating this last equality on the closed interval [0, 1], one obtains

$$\log\left\{\frac{c(\varphi(1))}{c(\varphi(0))}\right\} = \int_0^1 \mathbb{E}_{\varphi(u)} \left\{ {}^t\mathbf{Z} \frac{d\varphi(u)}{du} \right\} du. \tag{8}$$

One has,

$$\mathbf{E}_{\varphi(u)} \left\{ {}^t\mathbf{Z} \frac{d\varphi(u)}{du} \right\} = \mathbb{E} \left\{ {}^t\mathbf{Z} \left( \frac{d\varphi}{du} \circ U \right) \mid U = u \right\}$$

thus,

$$\begin{aligned} \int_0^1 \mathbb{E}_{\varphi(u)} \left\{ {}^t\mathbf{Z} \frac{d\varphi(u)}{du} \right\} du &= \mathbb{E} \left[ \mathbb{E} \left\{ {}^t\mathbf{Z} \left( \frac{d\varphi}{du} \circ U \right) \mid U = u \right\} \right] \\ &= \mathbb{E} \left\{ {}^t\mathbf{Z} \left( \frac{d\varphi}{du} \circ U \right) \right\}. \end{aligned}$$

In fine

$$\log\left\{\frac{c(\varphi(1))}{c(\varphi(0))}\right\} = \mathbb{E} \left\{ {}^t\mathbf{Z} \left( \frac{d\varphi}{du} \circ U \right) \right\}.$$

The mathematical expectation  $\mathbb{E}$  is taken with respect to the joint distribution of the random vector  $(U, \mathbf{r})$ , where  $U$  is distributed as the uniform distribution on the interval [0, 1] and  $r \mid U = u$  distributed as  $\mathbb{P}(\mathbf{r}; \varphi)$  of parameter  $\varphi(U)$ .

**2. Estimates of the Bradley-Terry-Luce Parameters and Indexes of Discrimination for the Colored Textures Belonging to the Red Color Range and the Green One**

Table 2. Estimates of the model parameter vector ( $\pi, \nu$ ) for each type of texture in the Red color range

RR		RI		RH		RV	
$\hat{\pi}$	$CI_{1-\alpha}(\pi)$	$\hat{\pi}$	$CI_{1-\alpha}(\pi)$	$\hat{\pi}$	$CI_{1-\alpha}(\pi)$	$\hat{\pi}$	$CI_{1-\alpha}(\pi)$
0.0021	(0.0015,0.0056)	0.0194	(0.0174,0.0213 )	0.0246	(0.0210,0.0281)	0.0023	(0.0031,0.0077)
0.0825	(0.0661,0.0989)	0.0715	(0.0643,0.0788)	0.0565	(0.0499,0.0631)	0.0799	(0.0693,0.0905)
0.0306	(0.0161,0.0451)	0.0412	(0.0380,0.0445)	0.0422	(0.0373,0.0470)	0.0429	(0.0338,0.0521)
0.1348	(0.0807,0.1889)	0.1015	(0.0817,0.1213)	0.0845	(0.0756,0.0935)	0.0828	(0.0697,0.0958)
0.0610	(0.0446,0.0775)	0.0574	(0.0555,0.0593)	0.0583	(0.0561,0.0604)	0.0665	(0.0618,0.0713)
0.1000	(0.0755,0.1245)	0.0754	(0.0709,0.0799)	0.0779	(0.0650,0.0908)	0.0869	(0.0751,0.0986)
0.0007	(0.0017,0.0030)	0.0153	(0.0135,0.0171)	0.0181	(0.0109,0.0254)	0.0015	(0.0014,0.0044)
0.0531	(0.0423,0.0639)	0.0534	(0.0464,0.0605)	0.0543	(0.0515, 0.0571)	0.0597	(0.0542,0.0652)
0.0214	(0.0081,0.0346)	0.0333	(0.0295,0.0371)	0.0388	(0.0322,0.0455)	0.0387	(0.0314,0.0460)
0.0272	(0.0134,0.0410)	0.0364	(0.0343, 0.0386)	0.0460	(0.043, 0.049)	0.0422	(0.0333,0.0512)
0.0985	(0.0787,0.1184)	0.0799	(0.0752,0.0846)	0.0735	(0.0653,0.0817)	0.0806	(0.0658,0.0954)
0.0683	(0.0577,0.0789)	0.0578	(0.0520,0.0636)	0.0637	(0.0537, 0.0737)	0.0741	(0.0645,0.0836)
0.0057	(0.0015,0.0128)	0.0220	(0.0191, 0.0249)	0.0283	(0.0210,0.0357)	0.0044	(0.0033, 0.0122)
0.0543	(0.0387,0.0700)	0.0540	(0.0470,0.0609)	0.0507	(0.0434, 0.0581)	0.0689	(0.0573, 0.0805)
0.0181	(0.0069,0.0294)	0.0309	(0.0264,0.0354)	0.0399	(0.0382,0.0417)	0.0361	(0.0239,0.0483)
0.0178	(0.0051,0.0305)	0.0325	(0.0278,0.0372)	0.0333	(0.0273,0.0392)	0.0314	(0.0193, 0.0434)
0.0256	(0.0116,0.0395)	0.0352	(0.0318,0.0386)	0.0408	(0.0377, 0.0439)	0.0284	(0.0179, 0.0389)
0.0471	(0.0368,0.0573)	0.0486	(0.0473,0.0499)	0.0536	(0.0481,0.0591)	0.0579	(0.0508, 0.0649)
0.1286	(0.0615,0.1957)	0.1003	(0.0869,0.1137)	0.0773	(0.0639, 0.0907)	0.0829	(0.0747, 0.0911)
0.0227	(0.0152,0.0302)	0.0339	(0.0280, 0.0398)	0.0376	(0.0364, 0.0388)	0.0319	(0.0243,0.0395)
$\hat{\nu}$	$CI_{1-\alpha}(\nu)$	$\hat{\nu}$	$CI_{1-\alpha}(\nu)$	$\hat{\nu}$	$CI_{1-\alpha}(\nu)$	$\hat{\nu}$	$CI_{1-\alpha}(\nu)$
1.2364	(0.9177,1.5550)	1.0242	(0.9862,1.0621)	1.3215	(1.210,1.433)	1.5291	(1.3469, 1.7113)

Table 3. Estimates of the model parameter vector ( $\pi, \nu$ ) for each type of texture in the Green color range

GR		GI		GH		GV	
$\hat{\pi}$	$CI_{1-\alpha}(\pi)$	$\hat{\pi}$	$CI_{1-\alpha}(\pi)$	$\hat{\pi}$	$CI_{1-\alpha}(\pi)$	$\hat{\pi}$	$CI_{1-\alpha}(\pi)$
0.0006	(0.0005,0.0018)	0.0010	(0.000, 0.002)	0.0120	(0.0040,0.0201)	0.0090	(0.0005,0.0175)
0.0446	(0.0288,0.0603)	0.0282	(0.0211, 0.0353)	0.0607	(0.0530,0.0684)	0.0676	(0.0573,0.0780)
0.0114	( 0.0080,0.0149)	0.0093	(0.0062,0.0123)	0.0339	(0.0279, 0.0400)	0.0303	(0.0203,0.0404)
0.3574	( 0.2072,0.5075)	0.6137	(0.5606, 0.6667)	0.1245	( 0.0931,0.1559)	0.1022	(0.0742,0.1303)
0.0318	( 0.0211,0.0425)	0.0191	(0.0139,0.0242)	0.0519	(0.0460,0.0577)	0.0538	(0.0495,0.0581)
0.0954	(0.0441, 0.1466)	0.0466	(0.0328,0.0604)	0.0812	(0.0761,0.0863)	0.0963	(0.0801,0.1124)
0.0002	(1e-04 ,4e-04)	0.0003	(1e-04, 8e-04)	0.0063	(0.0009,0.0117)	0.0082	(0.0015,0.0150)
0.0213	(0.0153,0.0273)	0.0141	(0.0090,0.0193)	0.0454	(0.0424,0.0485)	0.0456	(0.0382,0.0530)
0.0124	(0.0077,0.0171)	0.0095	(0.0062,0.0127)	0.0433	(0.0368,0.0498)	0.0370	(0.0302,0.0437)
0.0141	(0.0103,0.0178)	0.0109	(0.0074,0.0145)	0.0445	(0.0412,0.0479)	0.0412	(0.0322,0.0503)
0.0618	(0.0399,0.0836)	0.0348	(0.0253,0.0443)	0.0710	(0.0642, 0.0778)	0.0822	(0.0672,0.0973)
0.0661	(0.0384,0.0937)	0.0378	(0.0235, 0.0520)	0.0703	(0.0610,0.0796)	0.0782	(0.0652, 0.0911)
0.0013	(0.0006,0.0032)	0.0021	(0.0005,0.0036)	0.0155	(0.0073,0.0236)	0.0178	(0.0072,0.0285)
0.0314	(0.0199,0.0429)	0.0193	(0.0134,0.0251)	0.0559	( 0.0480,0.0639)	0.0549	(0.0464,0.0633)
0.0083	(0.0048,0.0118)	0.0067	(0.0031, 0.0103)	0.0391	(0.0327,0.0454)	0.0314	(0.0252,0.0377)
0.0046	(0.0013,0.0079)	0.0044	(0.0016, 0.0072)	0.0195	(0.0106,0.0284)	0.0230	(0.0141,0.0320)
0.0089	(0.0049,0.0128)	0.0060	(0.0031,0.0089 )	0.0273	(0.0195,0.0350)	0.0282	(0.0176, 0.0387)
0.0250	(0.0174,0.0326)	0.0167	(0.0097,0.0237)	0.0550	(0.0493,0.0607)	0.0522	(0.0447,0.0598)
0.1863	( 0.0932,0.2795)	0.1040	(0.0274,0.1805 )	0.1070	(0.0917,0.1222 )	0.1082	(0.0630,0.1533)
0.0174	(0.0125,0.0222)	0.0157	(0.0121,0.0193)	0.0357	(0.0319,0.0394)	0.0325	(0.0261,0.0390)
$\hat{\nu}$	$CI_{1-\alpha}(\nu)$	$\hat{\nu}$	$CI_{1-\alpha}(\nu)$	$\hat{\nu}$	$CI_{1-\alpha}(\nu)$	$\hat{\nu}$	$CI_{1-\alpha}(\nu)$
0.7273	(0.5892,0.8653)	0.6027	(0.4043,0.8011)	1.2114	(1.0712, 1.3516)	1.3243	(1.1424, 1.5063)

Table 4. Estimates of the model parameter vector  $(\pi, \nu)$  for each type of texture in the Yellow color range

YR		YI		YH		YV	
$\hat{\pi}$	$CI_{1-\alpha}(\pi)$	$\hat{\pi}$	$CI_{1-\alpha}(\pi)$	$\hat{\pi}$	$CI_{1-\alpha}(\pi)$	$\hat{\pi}$	$CI_{1-\alpha}(\pi)$
0.0069	(0.0060, 0.0198)	0.0006	(0.0001, 0.0012)	0.0222	(0.0187, 0.0257)	0.0242	(0.0195, 0.0290)
0.1001	(0.0650, 0.1352)	0.0574	(0.0373, 0.0774)	0.0697	(0.0648, 0.0746)	0.0634	(0.0593, 0.0676)
0.0373	(0.0177, 0.0570)	0.0174	(0.0112, 0.0236)	0.0516	(0.0465, 0.0568)	0.0592	(0.0555, 0.0629)
0.1435	(0.063, 0.224)	0.3663	(0.2572, 0.4754)	0.0852	(0.0758, 0.0946)	0.0632	(0.0605, 0.0659)
0.0681	(0.0565, 0.0797)	0.0385	(0.0281, 0.0489)	0.0663	(0.0593, 0.0732)	0.0619	(0.0581, 0.0658)
0.0864	(0.0754, 0.0974)	0.0468	(0.0328, 0.0607)	0.0710	(0.064, 0.078)	0.0752	(0.0696, 0.0808)
0.0043	(0.0050, 0.0136)	0.0004	(2e-04, 1e-03)	0.0191	(0.0144, 0.0237)	0.0145	(0.0090, 0.0199)
0.0572	(0.0436, 0.0707)	0.0293	(0.0208, 0.0377)	0.0606	(0.0542, 0.0671)	0.0605	(0.0532, 0.0678)
0.0108	(0.0015, 0.0231)	0.0027	(0.0016, 0.0037)	0.0328	(0.0264, 0.0392)	0.0341	(0.0315, 0.0366)
0.0179	(0.0035, 0.0324)	0.0049	(0.0027, 0.0071)	0.0367	(0.0329, 0.0405)	0.0427	(0.0400, 0.0455)
0.1277	(0.0777, 0.1776)	0.2119	(0.1642, 0.2595)	0.0803	(0.0730, 0.0877)	0.0625	(0.0593, 0.0656)
0.0537	(0.0361, 0.0712)	0.0298	(0.0230, 0.0365)	0.0601	(0.0559, 0.0643)	0.0662	(0.0625, 0.0699)
0.0083	(0.0037, 0.0204)	0.0021	(0.0008, 0.0034)	0.0271	(0.0222, 0.0320)	0.0292	(0.0253, 0.0331)
0.0477	(0.0302, 0.0652)	0.0202	(0.0150, 0.0253)	0.0484	(0.0427, 0.0541)	0.0660	(0.0609, 0.0712)
0.0090	(0.0046, 0.0225)	0.0021	(0.0011, 0.0032)	0.0303	(0.0278, 0.0328)	0.0310	(0.0248, 0.0373)
0.0193	(0.0040, 0.0346)	0.0072	(0.0053, 0.0092)	0.0365	(0.0319, 0.0410)	0.0457	(0.0418, 0.0497)
0.0260	(0.0076, 0.0445)	0.0105	(0.0084, 0.0126)	0.0401	(0.0345, 0.0457)	0.0477	(0.0447, 0.0507)
0.0356	(0.0204, 0.0509)	0.0146	(0.0103, 0.0189)	0.0447	(0.0426, 0.0468)	0.0547	(0.0508, 0.0586)
0.1200	(0.0817, 0.1584)	0.1220	(0.0169, 0.2270)	0.0857	(0.0679, 0.1035)	0.0643	(0.0560, 0.0727)
0.0202	(0.0149, 0.0255)	0.0154	(0.0117, 0.0191)	0.0316	(0.0290, 0.0343)	0.0336	(0.0292, 0.0379)
$\hat{\nu}$	$CI_{1-\alpha}(\nu)$	$\hat{\nu}$	$CI_{1-\alpha}(\nu)$	$\hat{\nu}$	$CI_{1-\alpha}(\nu)$	$\hat{\nu}$	$CI_{1-\alpha}(\nu)$
1.4452	(1.1983, 1.6922)	0.8474	(0.6464, 1.0483)	1.5043	(1.4669, 1.5416)	1.5678	(1.4259, 1.7097)

3. Percentage of Nonuniformity in the Data Explained by the Model

We define,

$$R^2 = 1 - \frac{GOF}{Denom}, \quad GOF = 2 \sum_r N_r \log\left(\frac{N_r}{n\mathbb{P}(r; \theta)}\right) \quad \text{and} \quad Denom = 2 \sum_r N_r \log\left(\frac{N_r}{n/K}\right)$$

with,  $n$  the number of observers,  $N_r$  the observed frequency of the ranking with ties  $r$  and  $K = \text{card}(\mathcal{A}(q))$ .

If the model exactly fits the data,  $R^2 = 1$ , and if it performs no better than the uniform,  $R^2 = 0$ .

Table 5. Percentage of nonuniformity in the data

Data	RR	RI	RH	RV
$R^2(\%)$	83.23	83.76	82.20	80.73

Table 6. Percentage of nonuniformity in the data.

Data	GR	GI	GH	GV
$R^2(\%)$	87.81	89.16	84.38	81.86

Table 7. Percentage of nonuniformity in the data.

Data	YR	YI	YH	YV
$R^2(\%)$	77.11	77.58	76.95	76.48

**4. Estimates of the Parameter  $\gamma_0$ , Statistic Values and p-values, Associated With the Observed Data for the Colored Textures**

Table 8. Estimates of  $\gamma_0$  involved in the large-sample test based on the likelihood ratio for the colored textures belonging to the red color ranges

Textures	RR	RI	RH	RV
$\widehat{\gamma}_0$	0.1380	-0.0212	0.2461	0.2601
$CI_{1-\alpha}(\gamma)$	(0.1020,0.1523)	(-0.0360,0.0231)	(0.2160,0.2510)	(0.1600,0.3500)

Table 9. Estimates of  $\gamma_0$  involved in the large-sample test based on the likelihood ratio for the colored textures belonging to the Green color ranges

Textures	GR	GI	GH	GV
$\widehat{\gamma}_0$	-0.1040	-0.2001	0.2366	0.2324
$CI_{1-\alpha}(\gamma)$	(-1.0023,0.2000)	(-0.2812,0.0575)	(0.2022,0.2552)	(0.2012,0.2500)

Table 10. Estimates of  $\gamma_0$  involved in the large-sample test based on the likelihood ratio for the colored textures belonging to the Yellow color ranges

Textures	YR	YI	YH	YV
$\widehat{\gamma}_0$	0.2573	0.0784	0.2512	0.2490
$CI_{1-\alpha}(\gamma)$	(0.1600,0.3100)	(0.0000,0.0910)	(0.2400,0.2723)	(0.2000,0.2632)

Table 11. Statistic values and p-values associated with the observed data for the colored textures belonging to Red color range

Textures	$-2 \log \lambda_n$	p-value
RR	1105.1861	0.0000
RI	936.9275	0.0000
RH	738.4551	0.0000
RV	1004.1607	0.0000

Table 12. Statistic values and p-values associated with the observed data for the colored textures belonging to Green color range

Textures	$-2 \log \lambda_n$	p-value
GR	1555.7132	0.0000
GI	1723.2944	0.0000
GH	987.3761	0.0000
GV	1012.5445	0.0000

Table 13. Statistic values and p-values associated with the observed data for the colored textures belonging to Yellow color range

Textures	$-2 \log \lambda_n$	p-value
YR	1108.5782	0.0000
YI	2001.4651	0.0000
YH	762.6826	0.0000
YV	640.1447	0.0000



5. Results of the Conover Post-Hoc Tests

5.1 Results of the Conover Post-Hoc Tests for the Investigated Textures Type in Red Color Range

Table 14. Summary statistics for each colored texture and a letter symbol: different letters indicate significant differences between colored textures in the set RR based on the selected level of  $\alpha = 0.05$

RR	Median	1st.Quartile	3rd.Quartile	Sig. group
RRLCA	19.00	18.375	19.000	ab
RRLCO	5.00	4.000	5.625	cdef
RRLCR	11.50	11.000	14.000	ghi
RRLCU	2.00	1.375	3.000	c
RRLFE	6.75	6.000	7.625	cdefj
RRLGA	3.75	3.000	4.000	cd
RRLK	19.50	19.000	20.000	a
RRLMN	8.00	7.500	9.000	efgj
RRLMO	16.00	14.000	16.500	bhk
RRLNB	13.75	12.000	14.500	ghi
RRLNV	3.00	3.000	4.250	cde
RRLRB	6.50	6.000	7.000	cdef
RRLSC	18.00	17.000	19.000	abk
RRLSR	9.00	8.000	9.000	defgj
RRLTC	16.25	14.000	17.000	abhk
RRLTR	15.00	14.500	17.000	abhk
RRLV	14.00	12.875	15.000	hik
RRLY	10.00	9.000	10.125	fgij
RRLZN	2.75	1.500	3.625	c
RRLZR	12.00	10.500	12.000	ghij

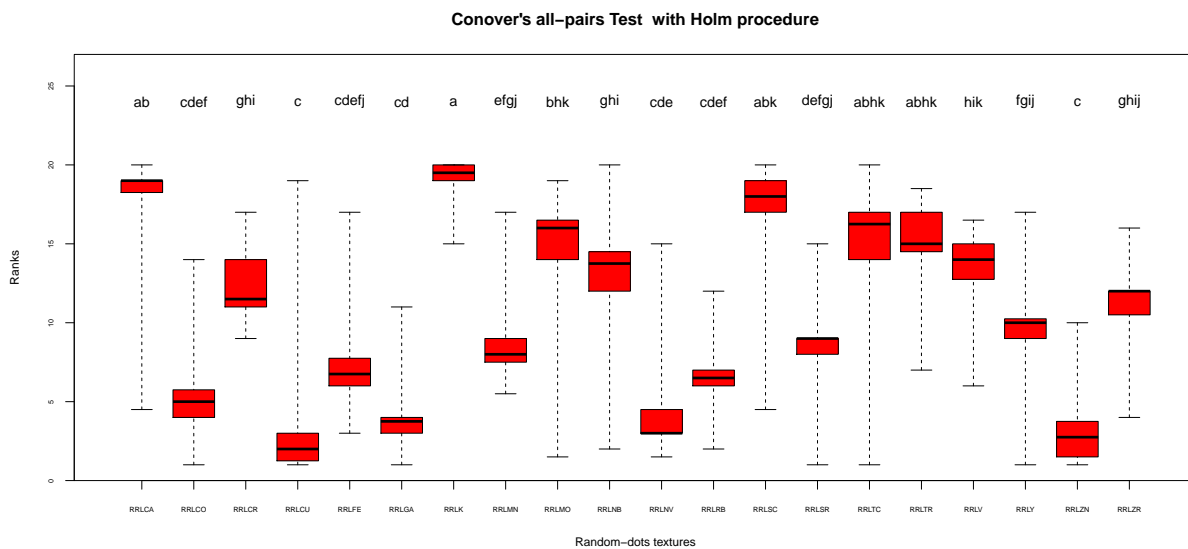


Figure 6. Box-whisker plot for each of the 20 random-dots textures in the Red color range

Table 15. Summary statistics for each colored texture and a letter symbol: different letters indicate significant differences between colored textures in the set RI based on the selected level of  $\alpha = 0.05$

RI	Median	1st.Quartile	3rd.Quartile	Sig. group
RILCA	18.50	18.000	19.000	ab
RILCO	5.00	5.000	5.000	cdef
RILCR	12.00	11.000	13.000	ghij
RILCU	1.50	1.000	2.000	c
RILFE	6.75	6.000	7.500	cdefg
RILGA	4.00	3.500	4.000	cde
RILK	20.00	19.000	20.000	a
RILMN	8.00	7.875	9.000	dfgh
RILMO	16.00	14.000	17.000	abijk
RILNB	13.25	12.750	14.500	hijk
RILNV	3.00	3.000	3.500	cde
RILRB	7.00	6.000	8.000	defg
RILSC	18.00	16.875	18.625	abk
RILSR	9.00	7.500	9.000	dfgh
RILTC	16.50	15.000	17.250	abik
RILTR	15.00	13.750	16.250	abik
RILV	14.00	12.500	15.125	bijk
RILY	10.00	9.000	11.000	fghj
RILZN	2.00	1.500	2.000	ce
RILZR	12.00	11.000	13.000	ghij

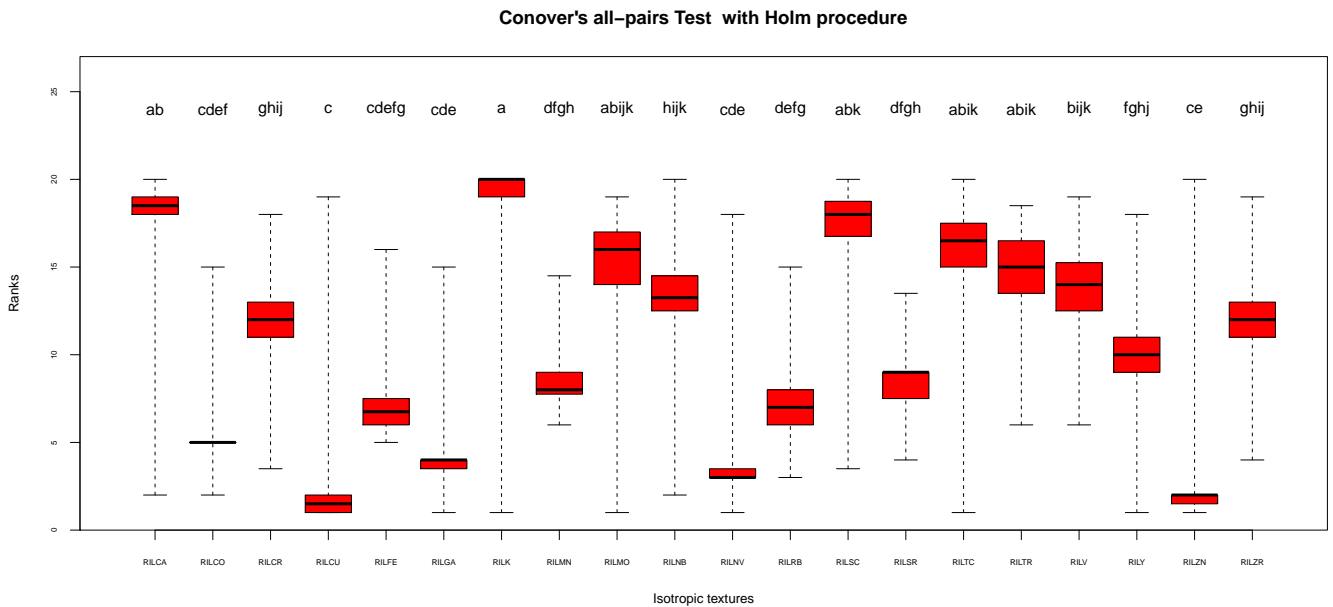


Figure 7. Box-whisker plot for each of the 20 isotropic textures in the Red color range

Table 16. Summary statistics for each colored texture and a letter symbol: different letters indicate significant differences between colored textures belonging to the set RH based on the selected level of  $\alpha = 0.05$

RH	Median	1st.Quartile	3rd.Quartile	Sig. group
RHLCA	18.75	17.000	19.000	ab
RHLCO	7.00	5.000	9.000	cde
RHLCR	12.25	10.000	15.625	fghi
RHLCU	2.00	1.375	3.625	c
RHLFE	6.50	5.000	10.000	cde
RHLGA	3.75	3.000	5.000	c
RHLK	19.00	18.000	20.000	a
RHLMN	9.00	7.000	11.000	def
RHLMO	15.50	11.500	18.000	abghi
RHLNB	12.75	9.875	14.000	dfgh
RHLNV	3.50	2.500	5.375	ce
RHLRB	6.25	4.500	7.250	ce
RHLSC	17.00	15.875	18.000	abi
RHLSR	9.75	7.250	11.625	defg
RHLTC	15.00	11.375	18.000	abghi
RHLTR	16.00	14.500	17.000	abhi
RHLV	14.00	11.500	16.000	bfgi
RHLY	9.00	7.000	11.625	defg
RHLZN	2.75	2.000	4.125	c
RHLZR	11.25	9.500	14.000	dfgh

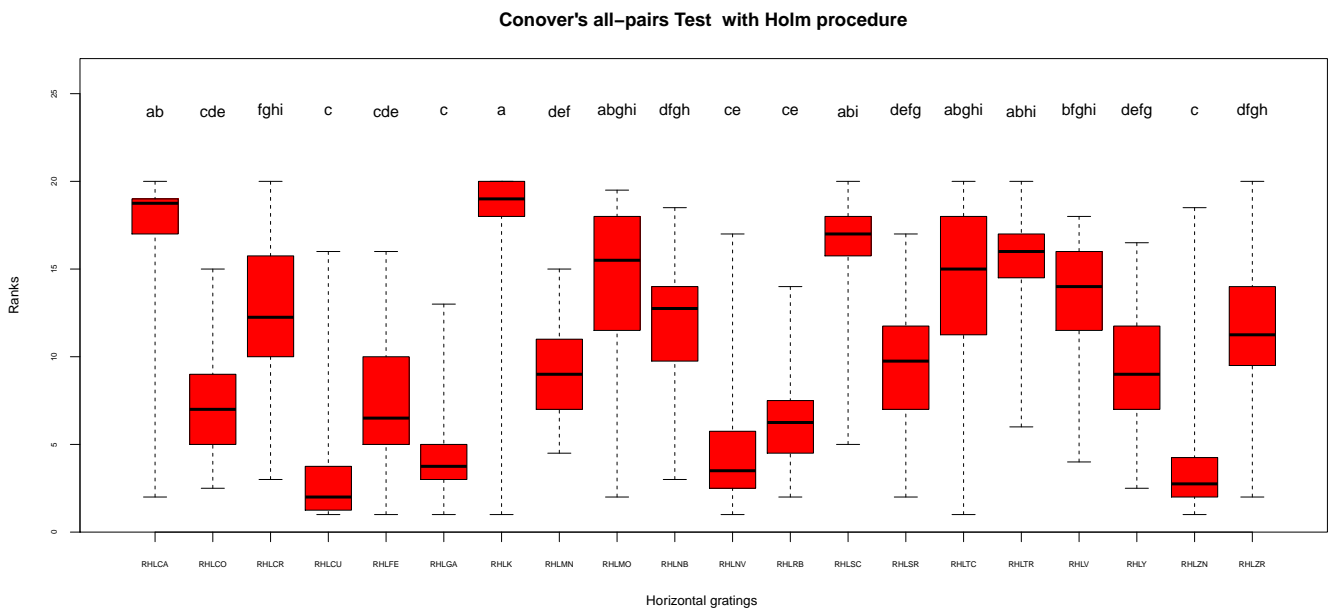


Figure 8. Box-whisker plot for each of the 20 horizontal gratings in the Red color range

Table 17. Summary statistics for each colored texture and a letter symbol: different letters indicate significant differences between colored textures belonging to the set RV based on the selected level of  $\alpha = 0.05$

RV	Median	1st.Quartile	3rd.Quartile	Sig. group
RVLC A	19.00	18.000	19.000	a
RVLC O	4.00	3.000	7.625	bc
RVLC R	11.75	11.000	14.250	def
RVLC U	4.00	3.000	7.125	bc
RVLFE	6.25	4.750	8.000	bcg
RVLGA	4.00	2.750	6.000	b
RVLK	19.00	18.000	20.000	a
RVLMN	8.00	6.875	9.000	bcdg
RVLMO	15.50	12.750	17.000	ef
RVLNB	13.50	12.000	15.000	def
RVLNV	4.00	3.000	6.250	bc
RVLRB	6.00	4.000	7.125	bc
RVLSC	18.00	17.375	19.000	ah
RVLSR	8.00	6.000	9.000	bcg
RVLTC	16.00	12.750	18.000	efh
RVLTR	15.00	13.000	16.000	afh
RVLV	14.50	12.000	16.625	afh
RVLY	10.00	9.375	10.250	cdfg
RVLZN	4.00	3.000	6.500	bc
RVLZR	12.00	10.000	13.000	defg

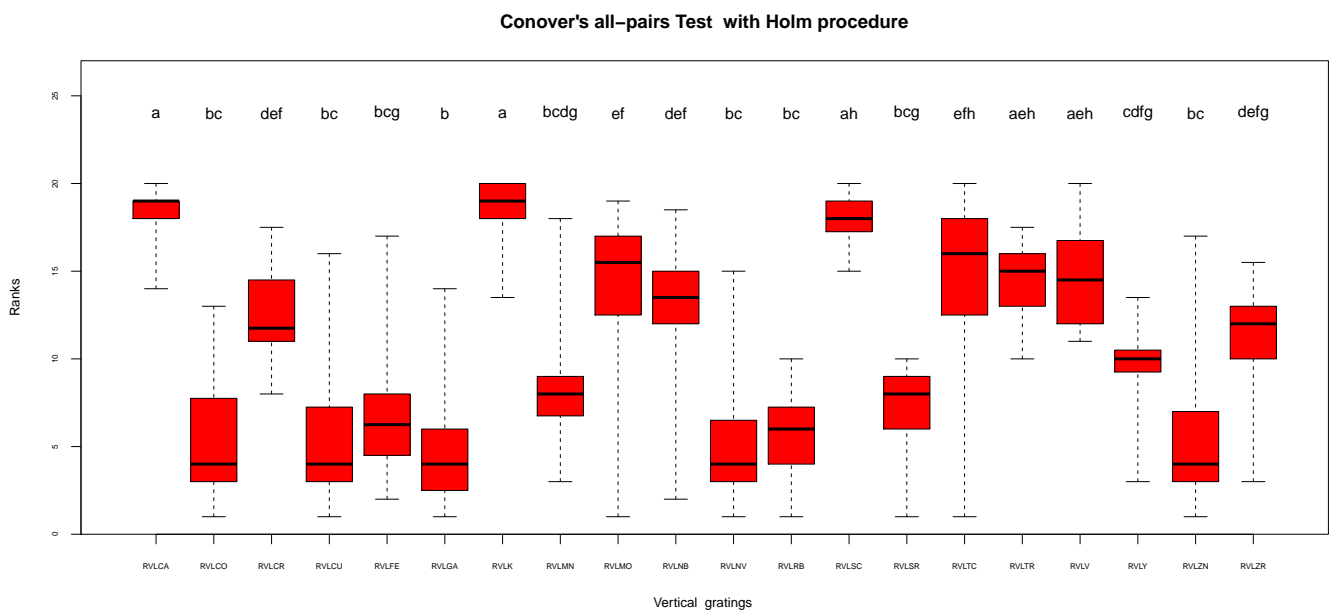


Figure 9. Box-whisker plot for each of the 20 vertical gratings in the Red color range

5.2 Results of the Conover Post-Hoc Tests for the Investigated Textures Type in the Green Color Range

Table 18. Summary statistics for each colored texture and a letter symbol: different letters indicate significant differences between colored textures belonging to the set GR based on the selected level of  $\alpha = 0.05$

GR	Median	1st.Quartile	3rd.Quartile	Sig. group
GRLCA	19.00	18.375	19.000	ab
GRLCO	6.00	5.500	6.000	cde
GRLCR	13.00	12.000	15.000	fgh
GRLCU	1.50	1.000	2.000	c
GRLFE	7.00	7.000	7.625	de
GRLGA	3.00	3.000	4.000	cd
GRLK	20.00	19.000	20.000	a
GRLMN	9.25	9.000	11.000	efgi
GRLMO	13.75	12.000	15.000	fgh
GRLNB	13.00	11.875	14.000	fghi
GRLNV	4.00	3.875	5.000	cd
GRLRB	5.00	4.000	5.000	cd
GRLSC	18.00	17.500	18.000	ab
GRLSR	8.00	8.000	8.125	dei
GRLTC	15.00	13.750	17.000	bfh
GRLTR	17.00	16.000	17.000	abh
GRLV	15.00	14.000	16.000	bfh
GRLY	9.25	8.875	10.000	egi
GRLZN	2.00	1.500	2.000	c
GRLZR	11.00	10.000	11.625	efgi

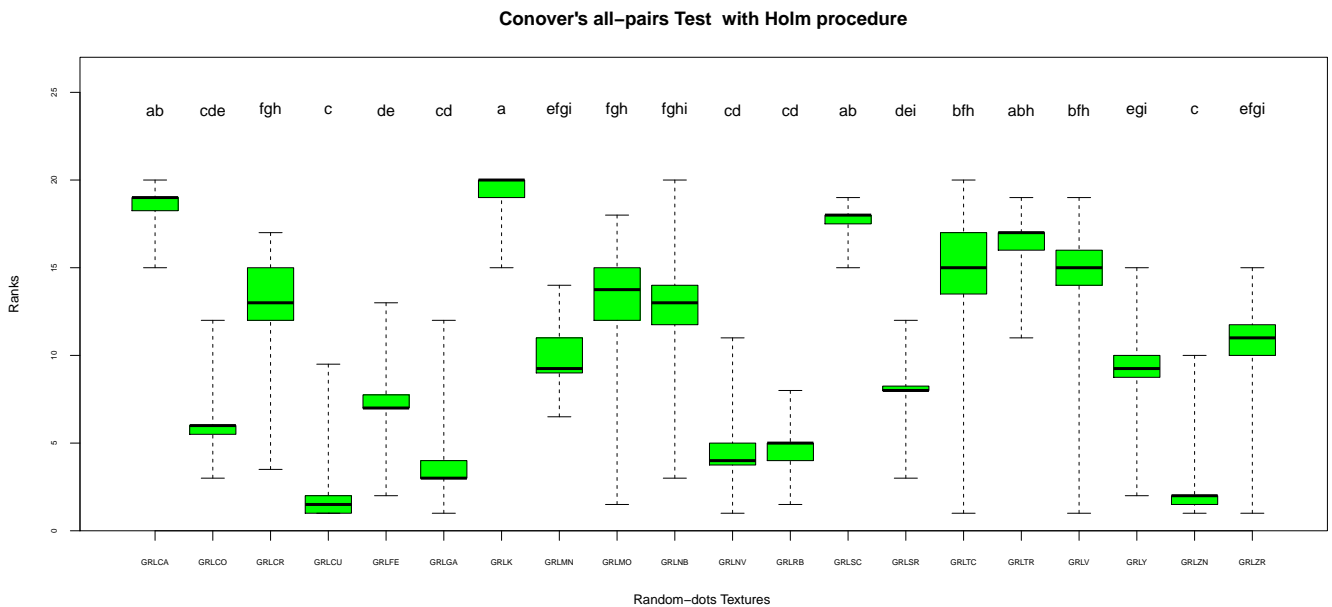


Figure 10. Box-whisker plot for each of the 20 random-dots textures in the Red color range

Table 19. Summary statistics for each colored texture and a letter symbol: different letters indicate significant differences between colored textures belonging to the set GI based on the selected level of  $\alpha = 0.05$

GI	Median	1st.Quartile	3rd.Quartile	Sig. group
GILCA	19.00	18.000	19.000	ab
GILCO	6.00	5.875	6.000	cdef
GILCR	13.50	12.000	15.000	ghij
GILCU	1.00	1.000	1.000	k
GILFE	7.50	7.000	8.625	cdlm
GILGA	3.00	3.000	3.625	efk
GILK	20.00	19.000	20.000	a
GILMN	10.00	8.000	13.000	cgilm
GILMO	13.00	12.000	15.000	ghil
GILNB	13.00	11.000	14.000	ghilm
GILNV	4.75	4.000	5.000	defk
GILRB	4.50	4.000	5.000	defk
GILSC	18.00	17.000	18.000	abj
GILSR	8.00	7.000	9.000	cdem
GILTC	15.25	13.125	17.250	bghj
GILTR	17.00	15.000	17.000	abhj
GILV	15.00	13.875	16.000	abghj
GILY	9.00	8.375	10.000	cdilm
GILZN	2.00	2.000	2.000	fk
GILZR	11.00	10.000	11.250	cgilm

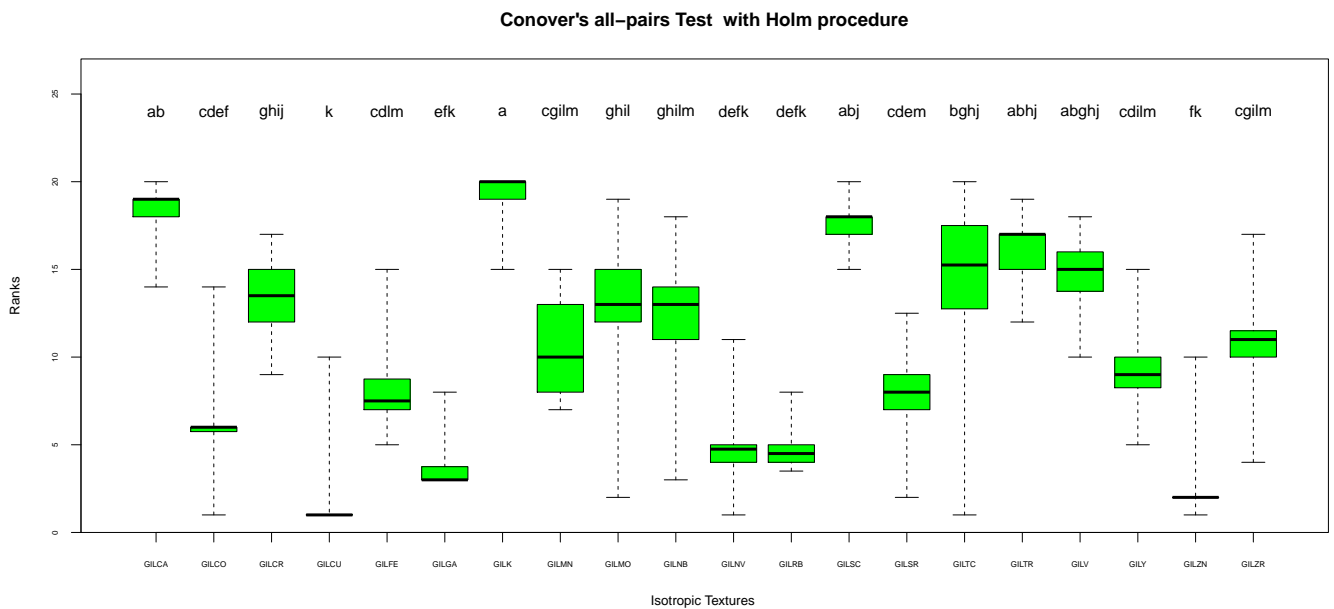


Figure 11. Box-whisker plot for each of the 20 isotropic textures in the Green color range



Table 21. Summary statistics for each colored texture and a letter symbol: different letters indicate significant differences between colored textures belonging to the set GV based on the selected level of  $\alpha = 0.05$

GV	Median	1st.Quartile	3rd.Quartile	Sig. group
GVLCA	19.00	18.000	19.000	ab
GVLCO	6.00	5.000	6.000	cde
GVLCR	14.00	12.000	15.625	afgh
GVLCO	2.50	2.000	3.500	c
GVLFE	7.00	7.000	9.875	dei
GVLGA	3.00	2.000	5.000	c
GVLK	19.75	18.500	20.000	b
GVMN	10.00	8.500	11.625	dfi
GVMO	14.00	11.375	15.625	fgi
GVLNB	12.00	9.500	14.000	fi
GVLNV	4.00	3.000	5.000	ce
GVLRB	5.00	4.000	6.000	ce
GVLSC	18.00	16.500	18.000	abh
GVLSR	8.00	7.500	9.625	dei
GVLTC	15.00	12.750	17.000	fgh
GVLTR	16.50	15.375	17.000	abgh
GVLV	15.00	14.000	16.000	abfgh
GVLV	9.00	8.500	10.000	dei
GVLZN	3.00	1.875	4.000	c
GVLZR	11.00	9.875	11.000	dfi

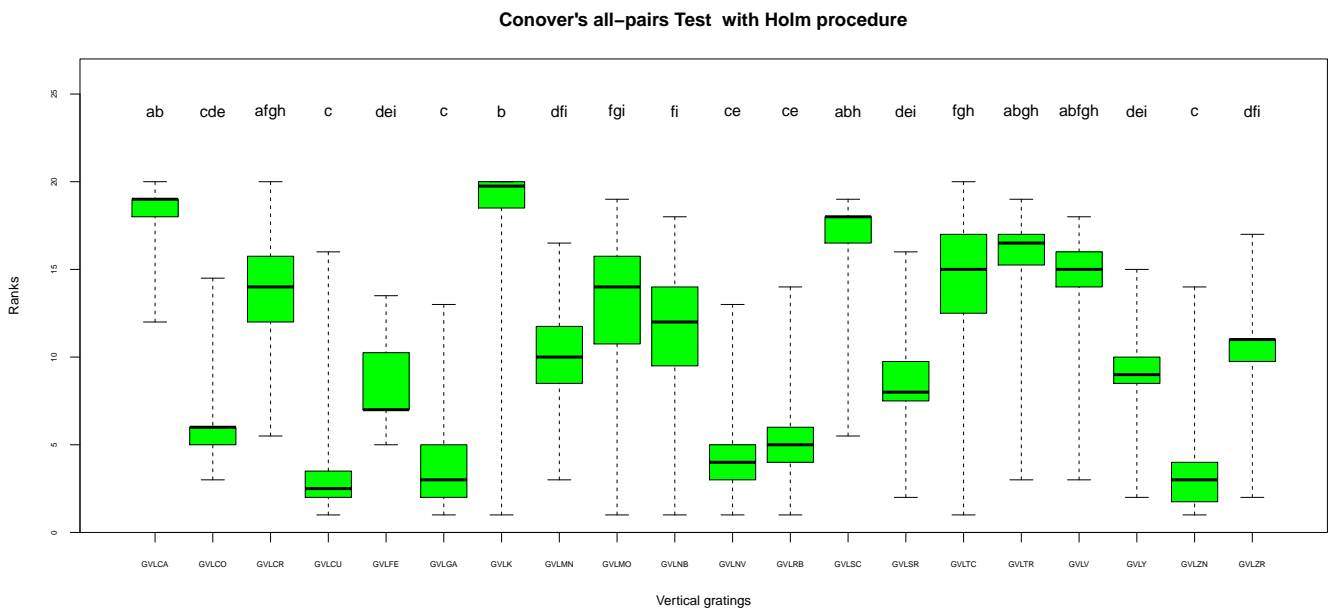


Figure 13. Box-whisker plot for each of the 20 vertical gratings in the Green color range



5.3 Results of the Conover Post-Hoc Tests for the Investigated Textures Type in the Yellow Color Range

Table 22. Summary statistics for each colored texture and a letter symbol: different letters indicate significant differences between colored textures belonging to the set YR based on the selected level of  $\alpha = 0.05$

YR	Median	1st.Quartile	3rd.Quartile	Sig. group
YRLCA	19.00	17.875	19.000	ab
YRLCO	4.00	3.000	5.000	cd
YRLCR	10.00	9.000	11.125	efgh
YRLCU	2.75	2.000	3.125	c
YRLFE	6.00	4.375	7.000	cde
YRLGA	5.00	3.000	6.000	cd
YRLK	20.00	19.000	20.000	a
YRLMN	7.00	6.500	8.000	cdef
YRLMO	17.00	16.000	17.500	abi
YRLNB	14.00	13.000	15.000	bgi
YRLNV	3.00	2.000	4.000	c
YRLRB	7.25	7.000	8.000	cdef
YRLSC	16.00	16.000	18.000	abi
YRLSR	9.25	9.000	10.000	defh
YRLTC	17.25	16.000	18.000	abi
YRLTR	14.00	13.000	15.000	bgi
YRLV	12.00	11.375	13.125	ghi
YRLY	11.00	9.875	11.625	fgh
YRLZN	3.00	2.000	4.000	c
YRLZR	12.25	11.000	14.000	ghi

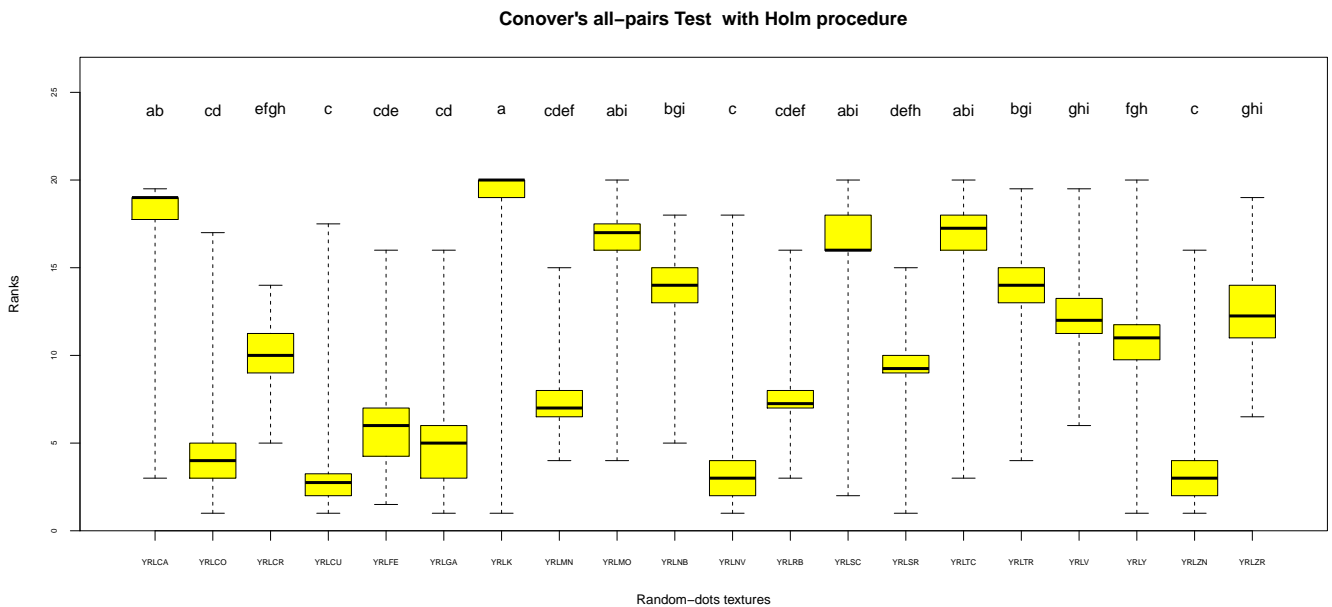


Figure 14. Box-whisker plot for each of the 20 random-dots textures in the Yellow color range

Table 23. Summary statistics for each colored texture and a letter symbol: different letters indicate significant differences between colored textures belonging to the set YI based on the selected level of  $\alpha = 0.05$

YI	Median	1st.Quartile	3rd.Quartile	Sig. group
YILCA	19.00	18.000	19.000	a
YILCO	4.00	4.000	5.000	bcd
YILCR	9.75	9.000	10.000	efg
YILCU	1.50	1.000	2.000	b
YILFE	6.00	5.000	6.000	bcde
YILGA	5.00	5.000	6.000	bcde
YILK	20.00	19.000	20.000	a
YILMN	8.00	7.000	8.000	cef
YILMO	17.00	16.000	17.125	ah
YILNB	15.00	14.000	16.000	ahi
YILNV	2.00	2.000	2.500	bd
YILRB	7.00	7.000	8.000	cdef
YILSC	17.00	15.875	18.000	ah
YILSR	9.00	9.000	10.000	efg
YILTC	17.00	15.500	18.000	ah
YILTR	14.00	12.500	15.000	ghi
YILV	12.00	12.000	13.250	ghi
YILY	11.00	10.500	11.000	fgi
YILZN	3.00	2.375	3.000	bcd
YILZR	13.00	12.000	14.125	ghi

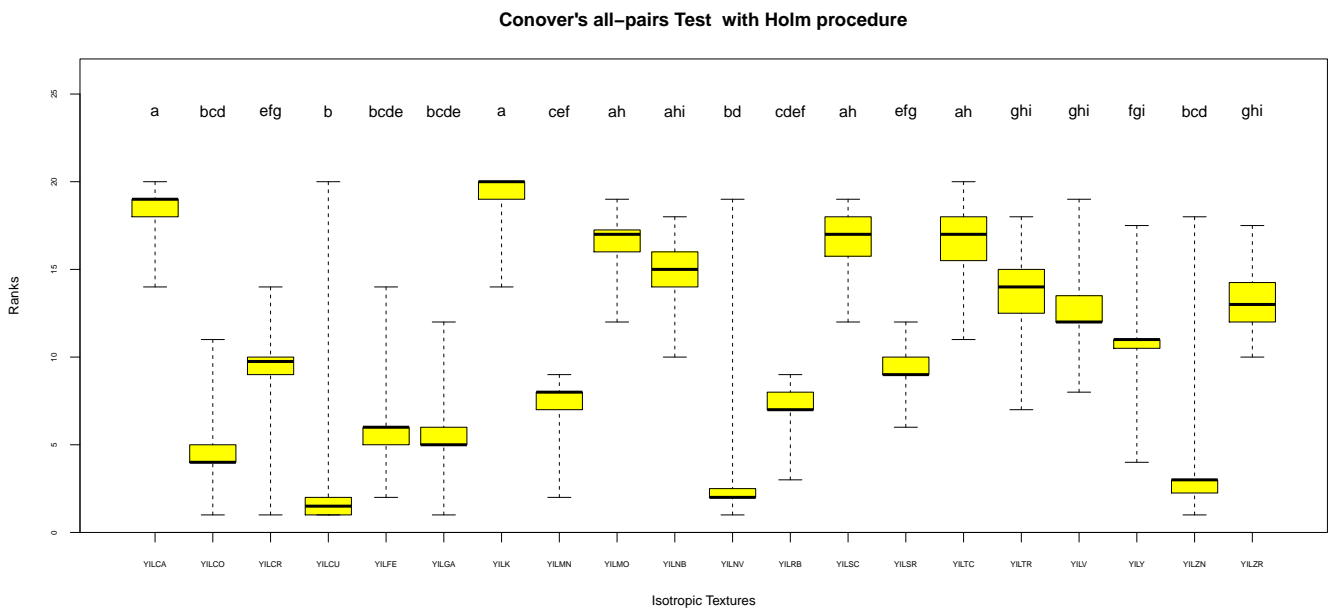


Figure 15. Box-whisker plot for each of the 20 isotropic textures in the Yellow color range

Table 24. Summary statistics for each colored texture and a letter symbol: different letters indicate significant differences between colored textures belonging to the set YH based on the selected level of  $\alpha = 0.05$

YH	Median	1st.Quartile	3rd.Quartile	Sig. group
YHLCA	18.25	17.000	19.000	a
YHLCO	5.00	4.000	6.250	bc
YHLCR	9.00	8.000	11.000	bdef
YHLCU	3.00	2.000	4.000	c
YHLFE	5.00	4.000	6.125	bc
YHLGA	5.00	3.500	7.000	bc
YHLK	19.00	17.875	20.000	a
YHLMN	7.00	5.875	8.000	bcde
YHLMO	16.00	14.375	17.000	aghi
YHLNB	15.00	12.875	17.000	afghi
YHLNV	3.00	2.000	5.000	c
YHLRB	7.75	5.625	8.000	bcd
YHLSC	17.50	15.000	18.625	ag
YHLSR	10.00	9.000	11.125	defh
YHLTC	17.00	15.875	17.625	agi
YHLTR	14.00	11.500	16.250	afghi
YHLV	13.00	11.000	14.000	fghi
YHLY	11.00	10.000	13.000	efhi
YHLZN	3.00	2.000	4.125	c
YHLZR	12.25	11.750	14.000	fghi

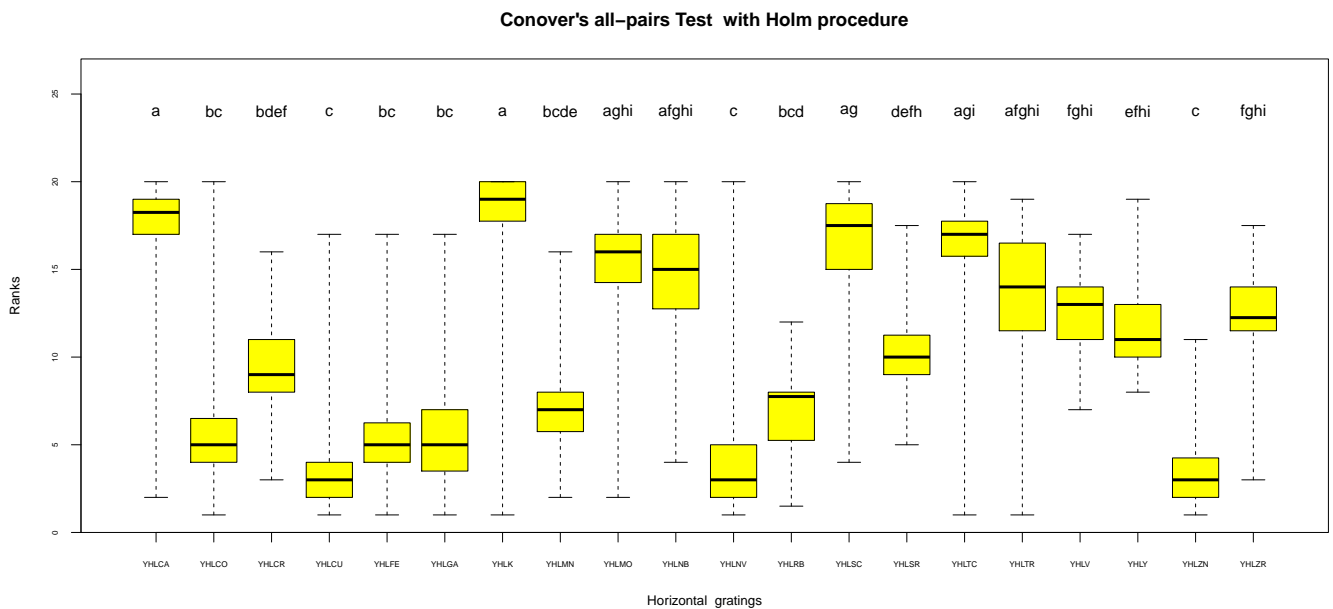


Figure 16. Box-whisker plot for each of the 20 horizontal gratings in the Yellow color range

Table 25. Summary statistics for each colored texture and a letter symbol: different letters indicate significant differences between colored textures belonging to the set YV based on the selected level of  $\alpha = 0.05$

YV	Median	1st.Quartile	3rd.Quartile	Sig. group
YVLCA	19.0	17.00	19.00	ab
YVLCO	6.0	4.00	7.50	cd
YVLCR	9.0	6.00	10.00	cdef
YVLCU	6.0	3.25	8.25	cd
YVLFE	7.5	5.50	9.00	cde
YVLGA	4.0	2.25	6.00	c
YVLK	19.0	17.00	20.00	a
YVLMN	7.5	6.00	9.75	cde
YVLMO	16.5	15.50	18.00	abg
YVLNB	14.5	13.25	15.25	abgh
YVLNV	6.0	3.00	8.25	cd
YVLRB	4.5	2.75	8.00	cd
YVLSC	17.0	15.25	18.00	abg
YVLSR	5.0	2.00	9.00	cd
YVLTC	17.0	16.50	19.00	abg
YVLTR	13.0	12.00	14.00	bfg
YVLV	12.0	11.00	13.00	efgh
YVLY	11.0	6.00	11.00	defh
YVLZN	5.0	3.00	8.50	cd
YVLZR	14.0	12.00	15.00	bfg

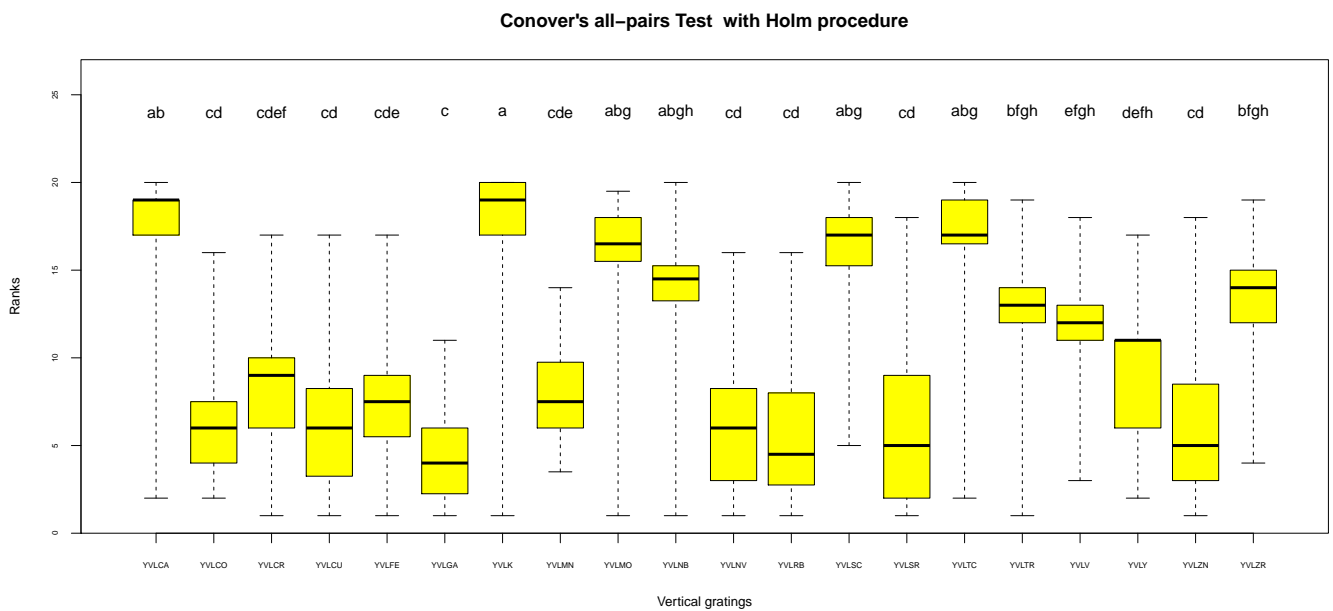


Figure 17. Box-whisker plot for each of the 20 vertical gratings in the Yellow color range

**Copyrights**

Copyright for this article is retained by the author(s), with first publication rights granted to the journal.

This is an open-access article distributed under the terms and conditions of the Creative Commons Attribution license (<http://creativecommons.org/licenses/by/4.0/>).