



## Labcom Hydr.IA: a joint Company-Academic laboratory to develop new flood forecasting services. Case Study on the Nîmes Flash-Floods (Southeastern France)

Romane Berthelin, Peniel Adoukpe, Guillaume Artigue, Nanée Chahinian, A. Dezetter, Octavian Dobricean, Sarah Gautier, Anne Johannet, Séverin Pistre, Guillaume Pla, et al.

### ► To cite this version:

Romane Berthelin, Peniel Adoukpe, Guillaume Artigue, Nanée Chahinian, A. Dezetter, et al.. Labcom Hydr.IA: a joint Company-Academic laboratory to develop new flood forecasting services. Case Study on the Nîmes Flash-Floods (Southeastern France). AGU 2023, Dec 2023, San Francisco, United States. 2023. hal-04343943

**HAL Id: hal-04343943**

**<https://imt-mines-ales.hal.science/hal-04343943>**

Submitted on 8 Jan 2024

**HAL** is a multi-disciplinary open access archive for the deposit and dissemination of scientific research documents, whether they are published or not. The documents may come from teaching and research institutions in France or abroad, or from public or private research centers.

L'archive ouverte pluridisciplinaire **HAL**, est destinée au dépôt et à la diffusion de documents scientifiques de niveau recherche, publiés ou non, émanant des établissements d'enseignement et de recherche français ou étrangers, des laboratoires publics ou privés.



# Labcom Hydr.IA: a joint Company-Academic laboratory to develop new flood forecasting services

## Case Study on the Nîmes Flash-Floods (Southeaster France)



### Authors

Romane Berthelin<sup>1</sup>, Peniel Adoukpe<sup>1</sup>, Guillaume Artigue<sup>1</sup>, Nanée Chahinian<sup>2</sup>, Alain Dezetter<sup>2</sup>, Octavian Dobricean<sup>3</sup>, Sarah Gautier<sup>1</sup>, Anne Johannet<sup>1</sup>, Severin Pistre<sup>2</sup>, Guillaume Pla<sup>4</sup>, Yves Trambly<sup>2</sup>, Kalil Traoré<sup>3</sup>, Valentin Wendling<sup>1</sup>

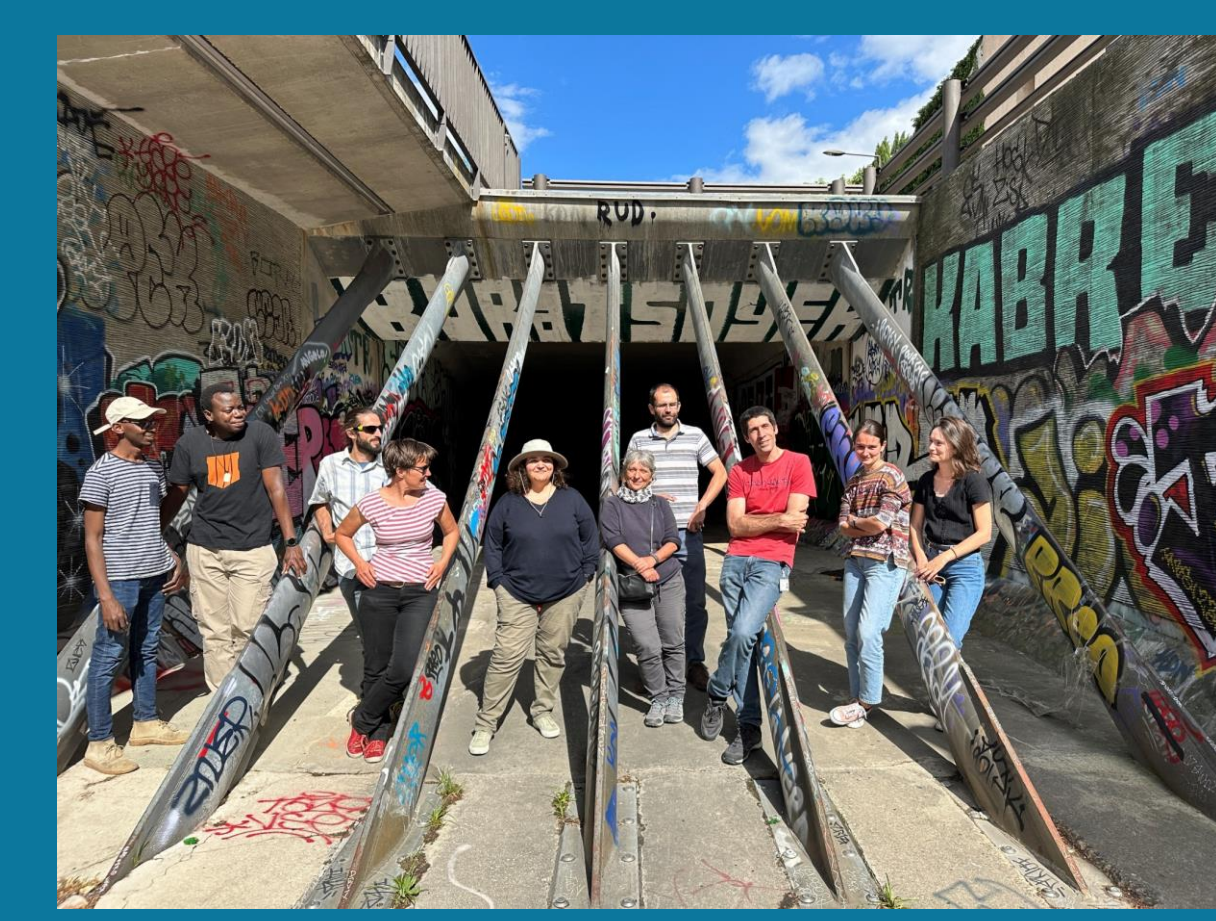
<sup>1</sup>HSM, Univ. Montpellier, IMT Mines Alès, CNRS, IRD, Alès, France

<sup>2</sup>HSM, Univ. Montpellier, CNRS, IRD, Montpellier, France

<sup>3</sup>Synapse Informatique, Grabels, France

<sup>4</sup>Ville de Nîmes, Nîmes 9, France

romane.berthelin@mines-ales.fr



### Flash-Floods in the city of Nîmes

- Mediterranean climate:
  - High intensity precipitation: e.g. in 1988 (1), > 420 mm in 8 hours
  - High precipitation heterogeneities
- Flood events with response times of less than 1/2 hour
- Damages: e.g. In 1988 (1) 1 billion euros worth of damages, 45,000 victims and 9 casualties
- Small catchments (< 30 km<sup>2</sup>) with karst terrains
- City crossed by urban rivers (2)

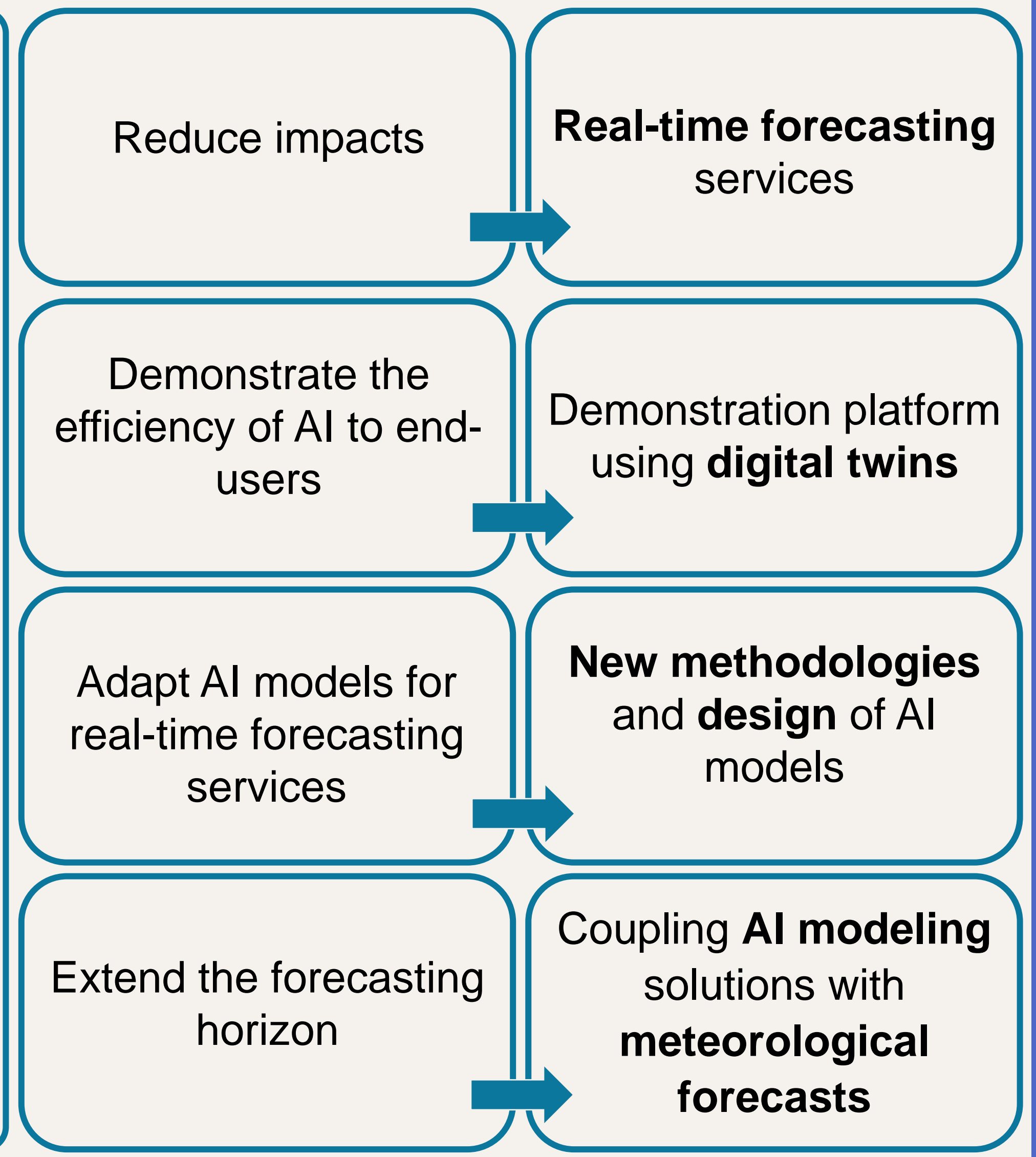


Despite the growing development of AI-related solutions in many complex fields, and the demonstration of their relevance to several hydro(geo)logical issues, there is a **deficit in the transfer of these technologies to end-users.**

Difficulty for **research** to be directly confronted with **real operational conditions**

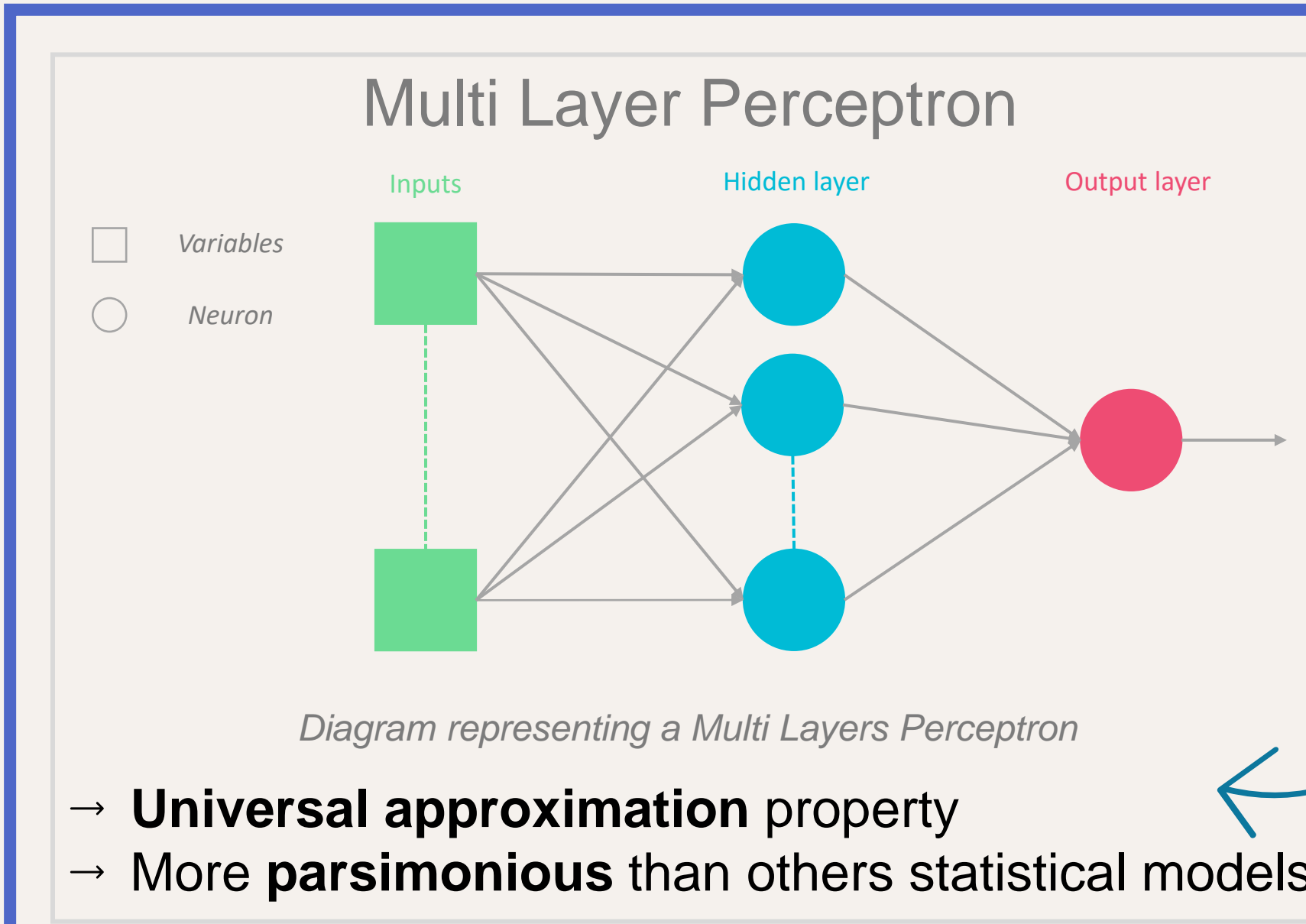
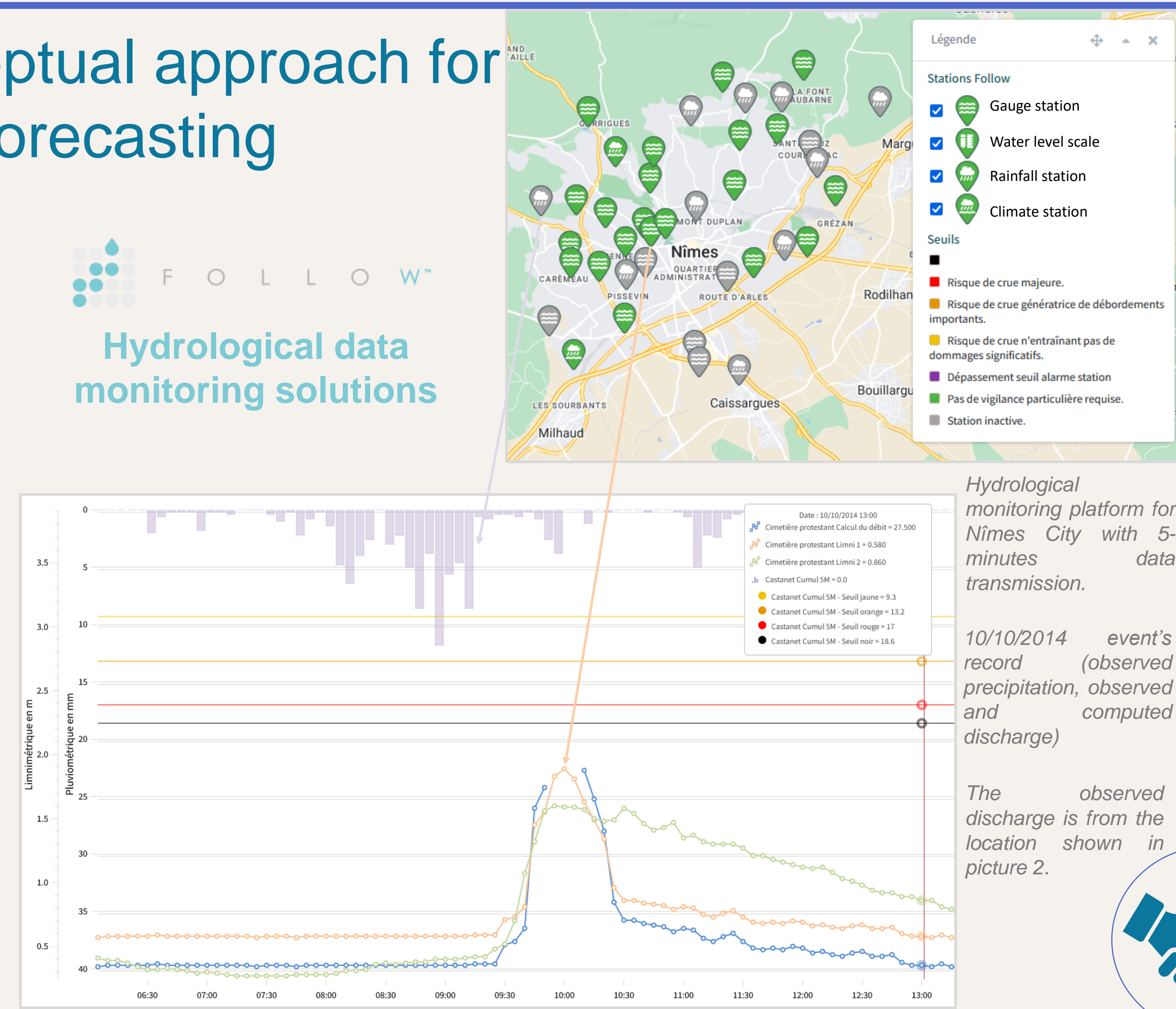
**Limited confidence users** have in solutions that are often perceived as opaque, and whose **operational implementation is rare**

### Challenges and solutions



### Conceptual approach for flood forecasting

- Physically based model\*
- Input data: corrected radar rain (0,25 km<sup>2</sup>, 5 min)
  - Rain/water flow models for non-urban areas and urban areas
  - Output: **Continuous discharge forecast** at max 1,5 hour lead time

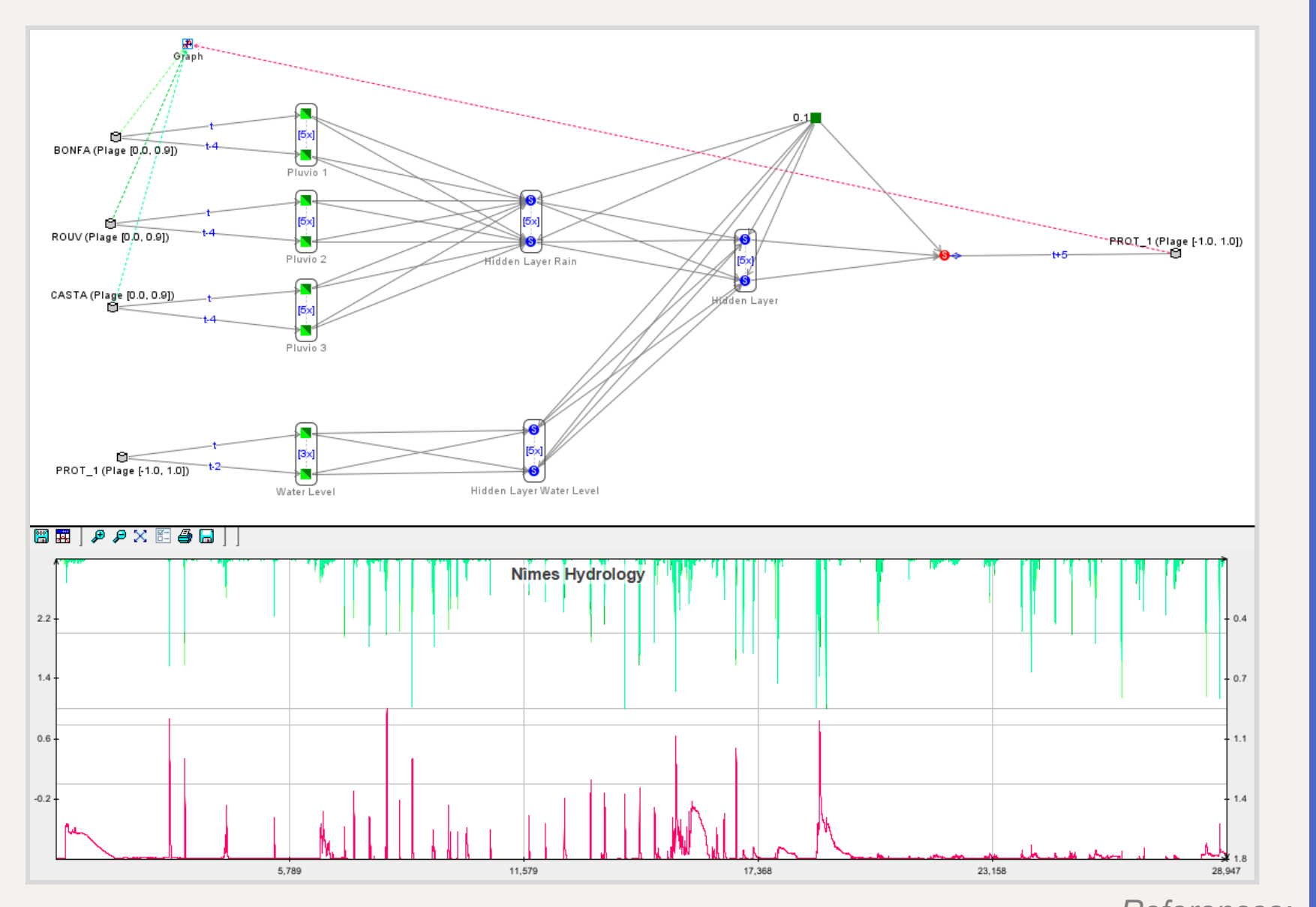


### AI for flood forecasting

In hydrology, the studied systems are **dynamic** and **non-linear**.

**Neural Networks** are particularly appropriate for representing these complex natural systems.

### RNF Pro ©2016 GEONOSIS A tool to implement Neural Networks



- ### Ongoing studies
- “**Digital twins** of complex hydrosystems for flood forecasting using neural network models”
  - “Flood forecasting using artificial intelligence: **increasing the forecast horizon**”
  - “Modeling of hydrosystems by machine learning: **streamline the use of AI** for flood forecasting”

Example of a Neural Network implemented with RNF Pro. The flood events observed in Nîmes are used to train and test the Neural Network in order to improve flood forecasting in this catchment.

References:  
<https://www.follow.solutions/fr/>  
 \*Pla G, Crippa J, Djerboua A, Dobricean O, Dongar F, Eugene A, Raymond M. 2019. ESPADA : un outil pour la gestion en temps réel des crues éclaircies urbaines en pleine modernisation. La Houille Blanche 3-4: 57–66.

References:  
 Hornik K, Stinchcombe M, White H (1989) Multilayer feedforward networks are universal approximators. Neural Netw 2:359–366  
 Barron AR (1993) Approximation bounds for superpositions of a sigmoidal function. Proceedings, San Antonio, TX, USA, 17–22 January 1993. 930–945.