



**HAL**  
open science

# Using shallow neural networks with functional connectivity from EEG signals for early diagnosis of Alzheimer's and frontotemporal dementia

Zaineb Ajra, Binbin Xu, Gérard Dray, Jacky Montmain, S. Perrey

► **To cite this version:**

Zaineb Ajra, Binbin Xu, Gérard Dray, Jacky Montmain, S. Perrey. Using shallow neural networks with functional connectivity from EEG signals for early diagnosis of Alzheimer's and frontotemporal dementia. *Frontiers in Neurology*, 2023, 14, 10.3389/fneur.2023.1270405 . hal-04239676

**HAL Id: hal-04239676**

<https://imt-mines-ales.hal.science/hal-04239676v1>

Submitted on 12 Oct 2023

**HAL** is a multi-disciplinary open access archive for the deposit and dissemination of scientific research documents, whether they are published or not. The documents may come from teaching and research institutions in France or abroad, or from public or private research centers.

L'archive ouverte pluridisciplinaire **HAL**, est destinée au dépôt et à la diffusion de documents scientifiques de niveau recherche, publiés ou non, émanant des établissements d'enseignement et de recherche français ou étrangers, des laboratoires publics ou privés.



Distributed under a Creative Commons Attribution 4.0 International License



## OPEN ACCESS

EDITED BY  
Emi A. Yuda,  
Tohoku University, Japan

REVIEWED BY  
Yutaka Yoshida,  
Tohoku University, Japan  
Daisuke Hirahara,  
Harada Academy, Japan

\*CORRESPONDENCE  
Zaïneb Ajra  
✉ zaïneb.ajra@umontpellier.fr

RECEIVED 31 July 2023  
ACCEPTED 25 September 2023  
PUBLISHED 12 October 2023

CITATION  
Ajra Z, Xu B, Dray G, Montmain J and Perrey S  
(2023) Using shallow neural networks with  
functional connectivity from EEG signals for  
early diagnosis of Alzheimer's and  
frontotemporal dementia.  
*Front. Neurol.* 14:1270405.  
doi: 10.3389/fneur.2023.1270405

COPYRIGHT  
© 2023 Ajra, Xu, Dray, Montmain and Perrey.  
This is an open-access article distributed under  
the terms of the [Creative Commons Attribution  
License \(CC BY\)](https://creativecommons.org/licenses/by/4.0/). The use, distribution or  
reproduction in other forums is permitted,  
provided the original author(s) and the  
copyright owner(s) are credited and that the  
original publication in this journal is cited, in  
accordance with accepted academic practice.  
No use, distribution or reproduction is  
permitted which does not comply with these  
terms.

# Using shallow neural networks with functional connectivity from EEG signals for early diagnosis of Alzheimer's and frontotemporal dementia

Zaïneb Ajra<sup>1\*</sup>, Binbin Xu<sup>2</sup>, Gérard Dray<sup>2</sup>, Jacky Montmain<sup>2</sup> and Stéphane Perrey<sup>1</sup>

<sup>1</sup>EuroMov Digital Health in Motion, Univ Montpellier, IMT Mines Ales, Montpellier, France, <sup>2</sup>EuroMov Digital Health in Motion, Univ Montpellier, IMT Mines Ales, Ales, France

**Introduction:** Dementia is a neurological disorder associated with aging that can cause a loss of cognitive functions, impacting daily life. Alzheimer's disease (AD) is the most common cause of dementia, accounting for 50–70% of cases, while frontotemporal dementia (FTD) affects social skills and personality. Electroencephalography (EEG) provides an effective tool to study the effects of AD on the brain.

**Methods:** In this study, we propose to use shallow neural networks applied to two sets of features: spectral-temporal and functional connectivity using four methods. We compare three supervised machine learning techniques to the CNN models to classify EEG signals of AD / FTD and control cases. We also evaluate different measures of functional connectivity from common EEG frequency bands considering multiple thresholds.

**Results and discussion:** Results showed that the shallow CNN-based models achieved the highest accuracy of 94.54% with AEC in test dataset when considering all connections, outperforming conventional methods and providing potentially an additional early dementia diagnosis tool.

## KEYWORDS

EEG, dementia, functional connectivity, Alzheimer, neural network

## 1. Introduction

Dementia is a neurodegenerative disease that results in the destruction of nerve cells in the brain, leading to various symptoms that affect cognition, emotion, and movement (1). It becomes more common as people age, and can have many different effects, some of which may be reversible. Early-onset dementia, which occurs before the age of 65 years, is most frequently caused by Alzheimer's disease (AD) or frontotemporal dementia (FTD). In contrast, late-onset dementia occurs after the age of 65 (2). AD is characterized by amnesia, fluent aphasia, and visuospatial difficulties. On the other hand, FTD is characterized by changes in personality and behavior (3). AD affects neurons and disrupts neurotransmitters responsible for storing memories and transmitting messages, while FTD causes degeneration in the frontal and anterior temporal lobes. However, neuropsychological tests aiming to differentiate between FTD and AD often yield uncertain or contradictory results (4). It is crucial to distinguish between the two, as they impact different cortical regions and exhibit distinct clinical findings.

Neuroimaging techniques have made a significant contribution to the identification of AD and FTD (5). Over the past two decades, electroencephalography (EEG) has gained significant interest in clinical practice and research as a non-invasive tool for diagnosing

dementia and determining its severity. EEG signals record the electrical activity of the brain, and have the potential to serve as a biomarker for AD and other neurodegenerative diseases (6). EEG analysis involves extracting useful information from EEG signals using various features such as time, frequency, and time-frequency. The time domain analysis involves statistical features such as mean, median, and standard deviation. The frequency domain features involve decomposing the signal into different frequency sub-bands such as delta, theta, alpha, beta, and Low-gamma. These features are commonly used in machine learning algorithms for AD classification. Time-frequency features involve using a spectrogram image as an alternative method for representing the characteristics of raw EEG data. The spectrogram displays the variation in energy values and frequency responses over time, using different magnitudes. In comparison to other manual or supervised feature extraction techniques, spectrograms are more effective in classifying signal/time-series data since they include more unknown and valuable features (7).

Functional connectivity (FC) (8) is among the most commonly used techniques for studying brain function. It aims to characterize the observational similarity between different brain regions and how such similarity changes due to patients' pathology or even under different mental tasks. This kind of analysis has been applied in various experimental contexts, ranging from high-resolution fMRI data to more recently, EEG data, to provide more detailed temporal information. There is mounting evidence suggesting that Alzheimer's disease and various psychiatric disorders are associated with disruptions or enhancements in FC (9).

The aim of this work is to improve diagnostic accuracy of dementia by exploring EEG signals using shallow Convolutional Neural Network (CNN) to classify subjects with AD, FTD, and healthy control (HC) group. Our approach involves feature extraction in both the time-frequency domain and functional connectivity analysis. We also compared our results with conventional classification methods, such as Linear discriminant Analysis (LDA), Support Vector Machine (SVM), and K-nearest neighbors (kNN), which rely on temporal and frequency feature extraction.

## 2. Data and models

### 2.1. Dataset

In this study, we explored the publicly available dataset collected by Miltiadous et al. (10). The original dataset consisted of 19 EEG channels, with a sampling rate of 500 Hz, recorded from the scalp of 88 participants, including 36 AD patients, 23 FTD patients, and 29 healthy control subjects. The mean age and standard deviation (SD) for the AD group were 66.4 (SD = 7.9), for the FTD group were 63.6 (SD = 8.2), and for the HC group were 67.9 (SD = 5.4). The cognitive decline and functional performance of patients with AD were evaluated using the Mini Mental State Examination (MMSE) score. The EEG signals were obtained from participants who were seated, relaxed, and had their eyes closed, following a clinical protocol. The released data were subjected to initial pre-processing steps, including band-pass filtering within the frequency range of 0.5–45 Hz and the signals were re-referenced

to A1–A2. Then, Artifact Subspace Reconstruction (ASR) was applied to remove bad data periods exceeding the maximum acceptable standard deviation of 17 for the 0.5 s window. To further investigate signal enhancement, Independent Component Analysis (ICA) was applied to the EEG signals, resulting in 19 distinct ICA components. As part of this process, elements classified as “eye artifacts” or “jaw artifacts” were automatically identified and removed. The average recordings duration for AD and FTD groups is ~13 min, ranging from 11 to 17 min. The recordings for the HC subjects lasted for an average of 13.8 min, ranging from 12.5 to 16.5 min.

The main question of this work is how to improve the accuracy of dementia diagnosis by investigating EEG signals, so that we could achieve better classification rate on three groups: AD, FTD, and HC. We focus on feature extraction through functional connectivity methods using various thresholding techniques. Additionally, the study compares the outcomes with CNN based time-frequency analysis and traditional classification approaches as benchmarking against state-of-the-art methods. The overall workflow of this study is illustrated in Figure 1. In the following section, we will detail the feature extraction steps and the classification methods.

### 2.2. Feature extraction methods

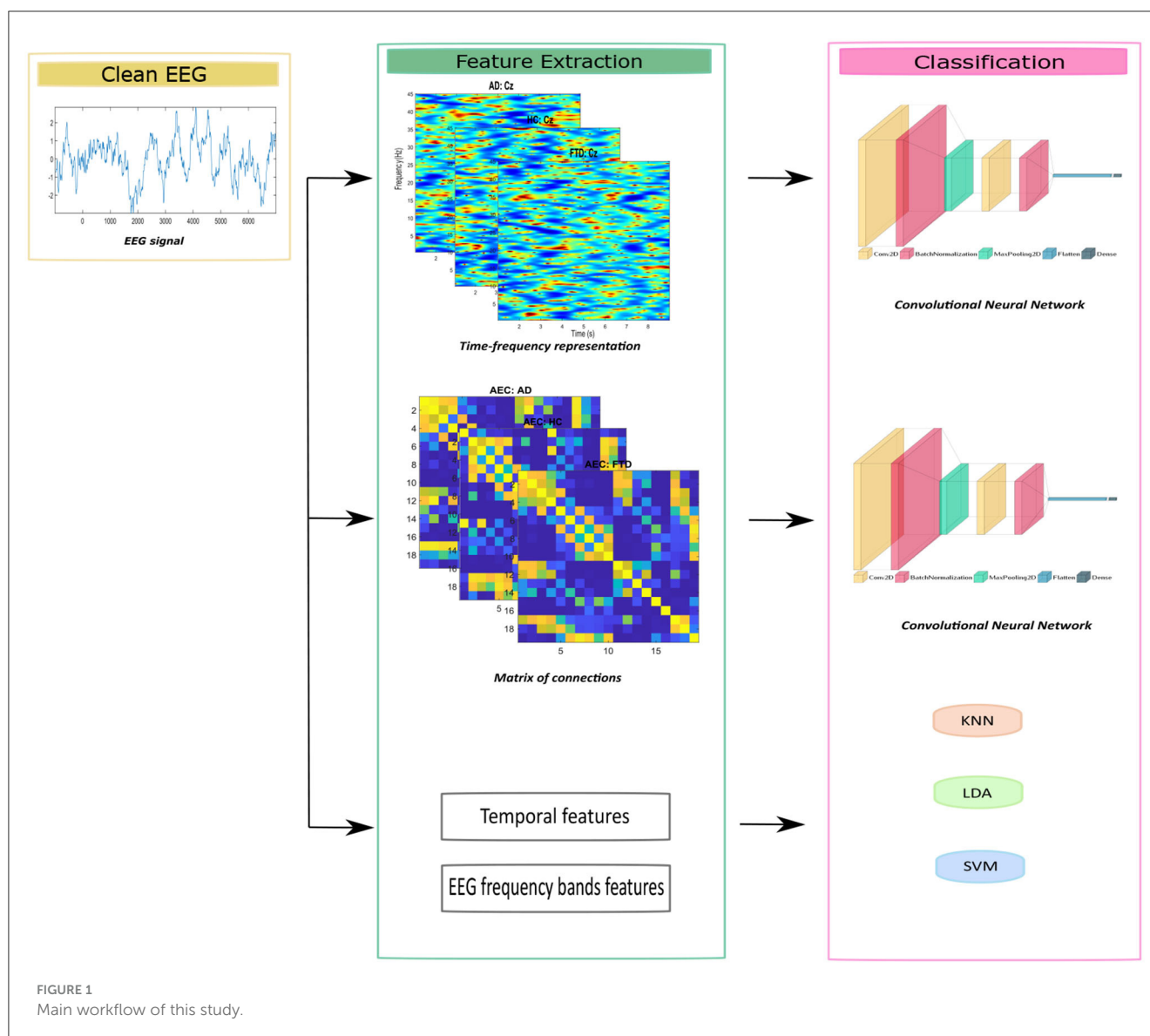
#### 2.2.1. Spectral-temporal feature extraction

The time-frequency analysis allows to obtain richer information which are more appropriate to neural network (11). In the work of (10), the EEG data was at first divided into epochs of 5 s with a 2.5 s overlap, features in the time and frequency domains were extracted for the classification. In this study, we use different spectral-temporal feature extraction method: the preprocessed data was epoched of duration 10 s, then spectral-temporal features are extracted using Fourier Transform and Hanning window tapering approach with EEGLab (see examples in Figure 2). In total, 130,150 spectrograms (subjects × channels × epochs) were extracted from the cleaned dataset. The choice of the spectral-temporal features is supported by their ability to capture the temporal and spectral information of EEG signals. This approach is consistent with the existing literature, where similar methods have demonstrated effectiveness in classifying various forms of dementia. In (12), the authors used a time-frequency features by applying both Fourier and Wavelet transforms to classify patients with Alzheimer's disease versus healthy controls. This specific study achieved 83% accuracy using decision trees, highlighting the potential of time-frequency features in dementia classification.

#### 2.2.2. Connectivity feature extraction

##### 2.2.2.1. Functional connectivity measures

Functional connectivity refers to the interactions between brain regions, which can be quantified using measures of dependency between their temporal dynamics. By thresholding the connectivity values between all pairs of brain regions, one can identify functional connectivity networks that show which brain regions interact with each other. In EEG-based functional connectivity



networks, nodes are represented by EEG channels, and links are connections between channel pairs (9). The relationship between channels can be quantified using various methods, such as phase synchronization index (PSI), imaginary part of coherency (ImCoh), Pearson correlation (Corr), and Amplitude Envelope Correlation (AEC) (13, 14).

Functional connectivity features offer an effective way to extract relevant information from EEG signals, as demonstrated by previous studies (15, 16) which used functional connectivity methods to discriminate between different groups, including AD/HC, AD/FTD, and FTD/HC, using SVM models. These studies provided valuable insights, with accuracies ranging from 72.2 to 87.67%. The use of functional connectivity features is motivated by their ability to unveil complex interactions within EEG data, enabling the identification of distinct patterns that can differentiate between various neurological conditions. This study employed four functional connectivity estimation methods, namely PSI, ImCoh, Corr, and AEC to compare the performances of time-

and frequency-domain measures in classifying AD, FTD, and HC. For each participant, we generated a connectivity matrix between all pairs of electrodes using the four functional connectivity measures separately. We applied three thresholding strategies on each connectivity matrix:

1. an absolute threshold with one commonly fixed value of 0.7,
2. a proportional threshold varied from 10 to 90% with steps of 10%, and
3. no thresholding (raw connectivity matrix without any thresholding). These resulting matrices were then compared to evaluate the effects of thresholding on the classification performance.

We evaluated the effects of thresholding on classification performance by comparing the resulting matrices. A total of 6,850 connectivity matrices were then generated for each functional connectivity method, and these matrices were used for classification using a shallow Convolutional Neural Network.

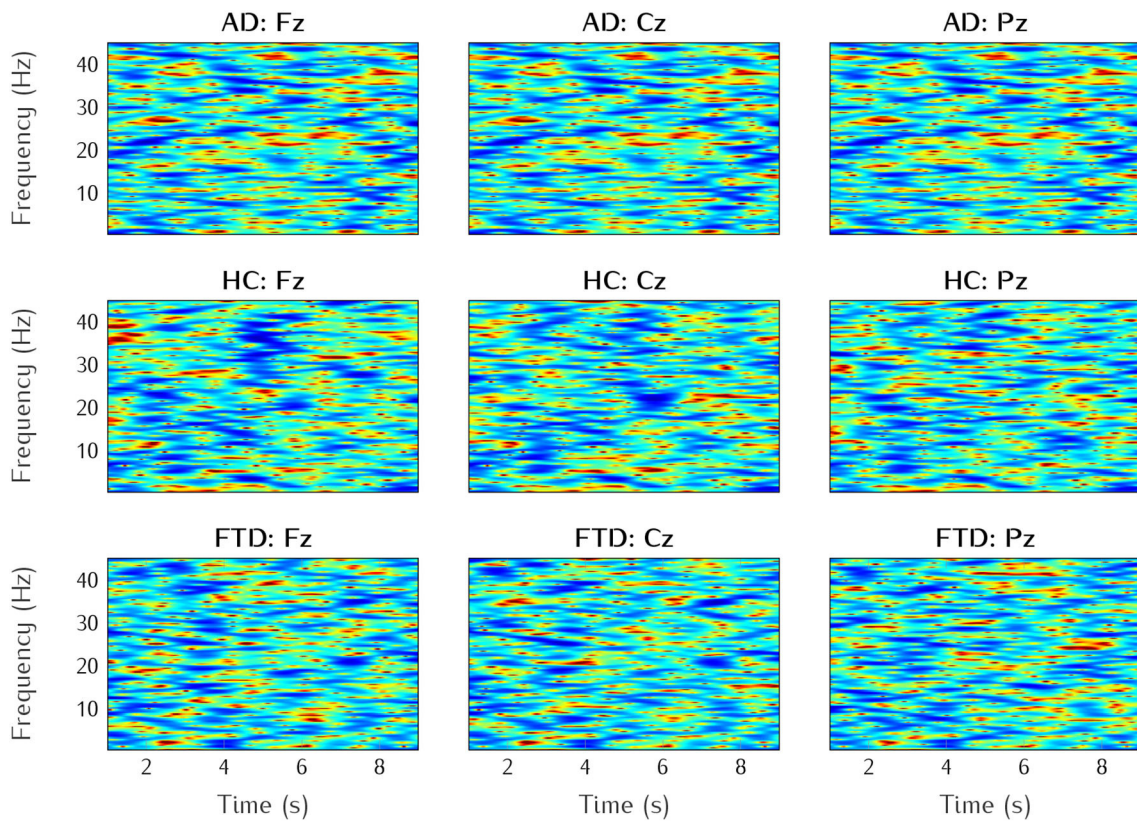


FIGURE 2 Examples of the three classes (AD, FTD, HC), and three electrode channels (Fz, Cz, Pz).

**2.2.2.1.1. Phase synchronization index**

Phase Synchronization Index measures how two or more signals are synchronized in terms of their phase relationship. It ignores the effect of amplitude and detects the correlation between different signal pairs only takes only into account the instantaneous phase relationship between the signals. Supposing the instantaneous phases of two signals  $x(t)$  and  $y(t)$  being  $\phi_x(t)$  and  $\phi_y(t)$ , then the phase synchronization index (PSI) is defined as:

$$PSI = \frac{1}{T} \left| \sum_{t=1}^T \exp\{j(\phi_x(t) - \phi_y(t))\} \right| \quad (1)$$

The PSI is sensitive to phase change and its value ranges from 0 to 1. The PSI value of 1 indicates strict phase locking between the signals. On the other hand, a value of 0 indicates that the phases are uniformly distributed and there is no synchronization between the signals.

Examples of connectivity matrices with these four methods can be found in the following Figure 3.

**2.2.2.1.2. Imaginary part of coherency**

Coherency is a standard method to determine the spectral similarity between two signals. The coherency can be split into real and imaginary parts and different quantities can be analyzed further. Volume conduction in EEG recordings significantly affects coherence estimators. Electrical activity of the cortex disparately

spreads across scalp electrodes at some distance from its generators allowing the same cortical activity to be measured by multiple neighboring electrodes at the same time, i.e., with zero phases (17). This method is calculated from the coherency measure and is defined by:

$$ImCoh = \frac{|I_{mag}(P_{xy})|}{\sqrt{|P_{xx}| |P_{yy}|}} \quad (2)$$

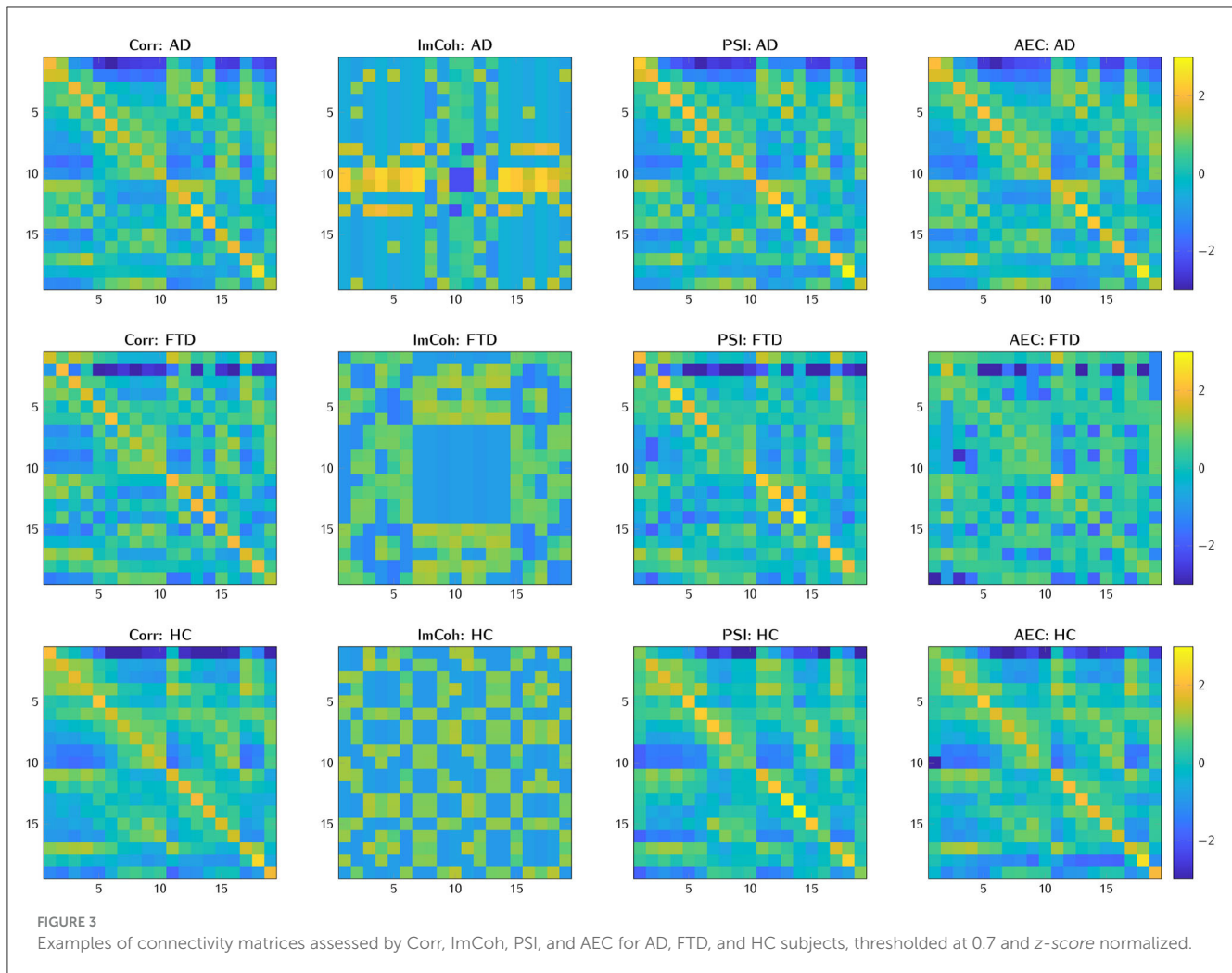
where  $I_{mag}$  is the imaginary part of the power spectral density between the x and y signals,  $P_{xy}$  and  $P_{yy}$  denote the power spectral densities of x and y with themselves. This measure is between 0 and 1. If the value is close to 1, it means that there is a real link between the two signals. If the value is close to 0, it indicates that the signals are independent. Indeed, this link is realized by the volume conduction and therefore a false positive.

**2.2.2.1.3. Pearson correlation coefficient**

Correlation (Corr) is used to estimate the level of linear dependence between two signals  $x(t)$  and  $y(t)$  in the time domain. The correlation is given by the following:

$$Corr = \frac{Cov(x, y)}{\sigma_x \sigma_y} \quad (3)$$

where  $Cov(x, y)$  is the covariance between electrodes x and y;  $\sigma_x$  and  $\sigma_y$  are the standard deviations of x and y, respectively. Corr



value varies between 1 and  $-1$ , where 1 is a complete positive linear correlation, 0 is no linear correlation, and  $-1$  is a total negative linear correlation. The greater the absolute value of Corr becomes, the stronger the correlation is.

#### 2.2.2.1.4. Amplitude envelope correlation

The Amplitude Envelope Correlation (AEC) (18) is a commonly used method to measure the synchrony of cortical oscillations. This method involves calculating the Amplitude Envelope (AE) of a given cortical oscillation, which represents the energy fluctuations of the oscillation over time and is defined as the absolute value of the Hilbert transform. The AEC is then computed by correlating the AE of two oscillatory brain signals. High AEC values indicate synchronous AE fluctuations between oscillations or networks. Therefore, the AEC can provide important insights into the functional connectivity of different brain regions.

#### 2.2.2.2. Graph analysis

The core idea of functional connectivity can actually be considered as a network. One type of the most common tools to evaluate network is based on graph theory. Graph theory utilizes a mathematical framework to represent the connections between objects, where the objects are referred to as vertices, and the links

that connect them are known as edges. The application of Graph theory to brain imaging data has demonstrated its potential as an understandable and adaptable method for representing brain networks (9). Regarding brain networks in sensor space, the vertices in a graph can symbolize electrodes, and the edges can represent a certain measure of connectivity between these electrodes. The most common metrics to evaluate a graph are: mean degree (measures how interconnected the neighbors of a node are), clustering coefficient (a measure of local connectivity), efficiency (measures how efficiency information is transmitted across the graph), and betweenness centrality (quantifies the importance of a node in facilitating communication between other nodes). Usually, before computing graph metrics, to eliminate the background noise or other perturbations, random threshold or other justified thresholding is selected, and edge weights falling below this threshold are then adjusted to zero (and removed from the final graph) (19).

#### 2.2.3. Conventional feature extraction

Although the EEG signal's complexity makes it challenging to achieve clinically acceptable classification performance using feature engineering alone, it is still worthwhile to benchmark

the performance of conventional machine learning models, as their computation costs are lower than those of deep learning models. In this study, we extracted the conventional time and frequency domain features from each epoch to setup the classification dataset. Five basic EEG frequency bands are considered: delta, theta, alpha, beta, and Low-gamma. For the frequency domain features, we calculated the energy of each frequency band, while for the time-domain feature, we computed the minimum, maximum, mean, median, variance, standard deviation, kurtosis, and skewness. We considered these features because they have demonstrated their relevance in the EEG-based dementia classification task and their potential to capture distinct patterns. Many studies have used temporal analysis and energy assessments of EEG rhythms. For instance, Tăutan et al. (20) used temporal features from EEG signals (including maximum, minimum, mean, skewness, and kurtosis) as well as changes in signal energy. The authors achieved 83.1% accuracy in binary classification (distinguishing Alzheimer's patients from healthy controls) using the random forest classifier. Furthermore, our selection of frequency-domain features is supported by previous studies demonstrating their potential as informative markers for Alzheimer's disease classification. In particular, Miltiadous et al. (10), Lindau et al. (21), and Safi and Safi (22) have used dominant EEG frequency bands in their classification frameworks. These approaches yielded remarkable accuracies in distinguishing Alzheimer's patients from healthy subjects or frontotemporal dementia patients reaching 93% for a binary classification.

## 2.3. Classification

### 2.3.1. Convolutional neural network based models

Convolutional neural network (CNN) models are powerful tools for automatic feature extraction and classification, outperforming conventional machine learning methods (11). The effectiveness of CNN model design depends on several factors, including the number of layers, configurations, and training requirements. 2D CNN models excel at extracting two-dimensional features from images, potentially leading to superior performance. In this study, we aim to classify two types of input:

1. two-dimensional spectral-temporal features of dimension  $224 \times 224$  from EEG signals, which can be treated as images. This size is the common size of state of the art CNN based models.
2. functional connectivity matrices of dimension  $19 \times 19$  extracted from each FC (19 EEG electrodes).

To achieve this, we propose a shallow CNN model consisting of two blocks of 2D convolutional layers (Conv2D) that extract the most relevant features from the inputs. Each Conv2D layer is followed by a batch normalization layer, which speeds up training and improves model convergence. Both Conv2D layers use a Rectified Linear Unit (ReLU) activation and are equipped with 50 filters with a kernel size of  $5 \times 5$  to disrupt the network's linear structure and make it sparse. The two blocks of Conv2D layers are connected by a max pooling layer with a size of  $2 \times 2$ , which

reduces the number of parameters in the network and improves computational efficiency.

### 2.3.2. Multi-frequency bands functional connectivity classification

In our study, we utilized a weighted approach to construct functional connectivity matrices. This involved applying a thresholding technique to the generated connectivity matrices. Thresholding is a widely employed method in research literature to eliminate weaker connections, as they are more susceptible to experimental noise (23). Two common approaches for thresholding in functional connectivity analysis are the absolute threshold and the proportional threshold. The absolute threshold approach involves choosing edges with connectivity values exceeding a specified threshold value. On the other hand, the proportional threshold approach involves selecting the strongest percentage of connections within each network.

To classify the three groups (AD, FTD, and HC), we initially calculated the functional connectivity within the three groups using four different methods. We employ a thresholding technique on the resulting connectivity matrices, retaining only the highest connectivity values. In the case of a proportional threshold, we explore nine thresholding values ranging from 10 to 90% in increment of 10%. Subsequently, based on the CNN model classification results, we determine the optimal threshold value from the nine options. Using this optimal threshold value, we generate four functional connectivity matrices in the four frequency bands [Theta (4–8 Hz), alpha (8–12 Hz), beta (12–30 Hz), and Low-gamma (30–45 Hz)] for the functional connectivity methods that showed the best classification performance (AEC, Corr, and PSI). We then compare the classification performance of the optimal proportional value with that of the absolute threshold and with no thresholding applied.

### 2.3.3. Reference methods with conventional machine learning algorithms

In order to further evaluate the performances of the studies shallow CNN models, we also utilized conventional machine learning techniques to conduct epoch-based classification of three groups: AD, FTD, and healthy control group. We utilized both temporal and frequency features in our approach. To address three distinct classification problems, we tested three commonly used classification algorithms in EEG studies: Linear Discriminant Analysis (LDA), Support Vector Machines (SVM), and K-Nearest Neighbors (kNN). We used a 10-fold cross-validation testing method to evaluate the performance of each algorithm. These three methods serve as the baseline methods.

## 2.4. Training and evaluation

In summary, three feature sets were tested to discriminate between AD, FTD patients, and HC subjects: (1) statistical features, (2) functional connectivity features, and (3) time-frequency representation. Each set of features was used independently as input for the CNN model, which was trained using the same

configuration for all sets of features. We utilized the Stochastic Gradient Descent with Momentum (SGDM) optimizer, with a learning rate fixed at 0.001. The maximum number of training epochs was set to 50, with a batch size of 128. The same early stopping rule was applied, with a validation patience of 20 and a validation frequency of every eight iterations. Keeping the original subject/trial ratios from the raw data, samples from all features sets were randomly split into TRAINING (70%), VALIDATION (15%), and TEST (15%). To prevent over-fitting, 10 random triple-sets were generated and used for the CNN models. The median values of four metrics (Accuracy, Specificity, Sensitivity, and F1-score) on TEST sets are reported from the 50 epochs-long training.

The four specific quantitative indexes of the model's classification performance are as follows:

$$Accuracy = \frac{TP + TN}{TP + TN + FP + FN} \quad (4)$$

$$Specificity = \frac{TN}{TN + FP} \quad (5)$$

$$Sensitivity = \frac{TP}{FN + TP} \quad (6)$$

$$F1 - score = \frac{2 \times Precision \times Sensitivity}{Precision + Sensitivity} \quad (7)$$

Where Precision is defined as:

$$Precision = \frac{TP}{TP + FP} \quad (8)$$

In these equations, TP denotes the correct classifications of positive cases, TN denotes the correct classifications of negative cases, FP denotes the incorrect classifications of negative cases into class positive, and FN denotes the incorrect classifications of positive cases into class negative.

## 3. Results

### 3.1. Classification performances: absolute threshold

Table 1 presents the classification performance of different methods, where an absolute threshold of 0.7 for FC was used, and median accuracy is reported. The three conventional machine learning models, SVM, LDA, and kNN, were tested under the same training conditions, and the results showed poor performance, with a global median accuracy of only at 58.68, 57.89, and 59.77%, respectively. These values were significantly lower than the results obtained with the CNN model. The CNN-based models were able to achieve an accuracy of 83.14, 87.82, 73.29, 85.87, and 81.97% for Time-Frequency analysis, PSI, ImCoh, Corr, and AEC methods, respectively. However, it is important to note that different approaches may be necessary to determine the brain regions involved since there's no universal method for determining functional connectivity (24). In fact, identifying the

TABLE 1 The classification performance of different methods with an absolute threshold of 0.7 for FC (median %).

Methods	ACC	Sensitivity	Specificity	F1 score
LDA	57.89	35.93	68.03	35.91
SVM	58.68	37.03	67.98	36.94
KNN	59.77	35.41	67.77	33.93
CNN-TF	83.14	82.41	91.28	82.66
CNN-PSI	<b>87.82</b>	<b>86.89</b>	<b>93.43</b>	<b>87.69</b>
CNN-ImCoh	73.29	71.07	86.87	72.60
CNN-Corr	85.87	87.56	92.24	86.44
CNN-AEC	81.97	84.83	90.15	83.24

TF denotes Time-Frequency. The bold values represent the best results obtained by the proposed CNN.

optimal method to infer these connections between brain regions remains a challenge in the field of network neuroscience (25). Regarding functional connectivity, the PSI method provided the best performance in the CNN model.

Further result details regarding Table 1 can be found in Table 2. As observed, the choice of the FC used to create the matrices of connections has a significant impact on the overall predictive performance. For the AD group, Corr, PSI, and AEC yielded the best performance in the classification task with a sensitivity of 86.62, 86.15, and 85.21%, respectively. Conversely, in the case of HC subjects, Corr outperformed the other methods. Additionally, among all functional connectivity methods, the FTD group exhibited the lowest classification performance, with sensitivities ranging between 76.64 and 66.39%. Given that there's no universal approach to deduce connections and achieve precise results, it is crucial to explore various methods to establish a dependable framework for automatically diagnosing dementia. Our proposed method, which involves using a matrix of connections as input to a CNN, provides more accurate results than conventional classification methods that require a prior feature engineering step. Since EEG signals are highly complex in nature, conventional techniques cannot always guarantee satisfactory classification performance. The reasons behind the high performance of our CNN-based approach can be attributed to the synergy between CNN and functional connectivity features. Functional connectivity features, which incorporate the complex interactions between distinct brain regions, offer a comprehensive representation of brain dynamics. Conventional methods often struggle to take advantage of this lack of information, relying primarily on manual feature engineering that can ignore crucial patterns. In contrast, CNN's hierarchical architecture excels at detecting patterns that consistently align with the complexities inherent in functional connectivity features. In addition, the integration of time-frequency features into the CNN learning process enriches its ability to understand the temporal and spectral aspects of EEG data. Overall, the strength of the CNN model lies in its capacity to capture features from a variety of data representations, eliminating the need for explicit feature engineering, which is particularly beneficial for complex signals such as EEG. The CNN's flexibility and ability to adapt to different types of data underline its superiority over traditional methods in this complex context.



TABLE 2 The performances by groups with different methods, threshold of 0.7 for FC (median %).

Models	Sensitivity			Specificity			F1 score		
	AD	HC	FTD	AD	HC	FTD	AD	HC	FTD
LDA	29.06	41.68	36.06	74.66	63.23	66.16	27.90	42.95	36.89
SVM	47.25	28.83	35.02	58.68	80.33	64.95	45.58	29.36	35.89
KNN	38.67	57.21	10.34	63.38	46.28	93.66	37.69	48.63	15.48
CNN-TF	85.81	83.30	77.67	88.02	90.68	94.69	84.84	83.15	79.95
CNN-PSI	86.15	86.52	76.64	87.33	92.39	95.27	84.35	86.15	79.45
CNN-ImCoh	77.58	71.91	66.39	81.50	84.93	92.20	75.99	71.91	69.68
CNN-Corr	86.62	87.92	74.59	88.00	92.09	95.52	84.52	86.46	78.51
CNN-AEC	85.21	84.27	73.36	85.67	91.12	95.14	82.63	83.73	77.14

TABLE 3 The performances of different FC using a proportional threshold of keeping the highest 20% of values (median %).

Methods	ACC	Sensitivity	Specificity	F1 score
CNN-PSI	87.23	89.04	93.28	88.30
CNN-ImCoh	77.19	74.59	86.27	76.47
CNN-Corr	<b>92.59</b>	<b>94.38</b>	<b>95.22</b>	<b>92.82</b>
CNN-AEC	89.86	89.91	95.07	90.12

The bold values represent the best results obtained by the proposed CNN.

### 3.2. Classification performances: proportional threshold

In functional connectivity analysis, absolute thresholding involves selecting edges with connectivity values above a fixed threshold and setting other edges to 0. This can lead to different network densities across subjects (19). However, since the absolute threshold is fixed across all subjects, it may not be suitable for datasets with varying connectivity strengths or individual differences. To address this issue and ensure more comparable networks across subjects, we adopted in this work a proportional threshold. Therefore, by using a proportional threshold, we can achieve more consistent results and better account for individual differences in connectivity strengths, leading to a more reliable and interpretable comparison of functional connectivity networks across subjects.

Table 3 presents the classification performance of different methods using a proportional threshold of the top 20% of connection values. For this method, we applied thresholding to the obtained real-valued connectivity matrices by selecting only the highest 20% of connectivity values. This method was used to ensure that we provide equal amounts of information to all functional connectivity matrices. Indeed, absolute thresholding used previously is a method of selecting a fixed threshold value to determine which connections in a network should be considered significant. However, the threshold selection is generally far from being an automated procedure, especially when using different functional connectivity metrics. Using a fixed threshold value across all analyses may not be appropriate for all methods and could

potentially bias the results. Proportional thresholding, on the other hand, is a flexible thresholding method that adjusts the threshold value based on the distribution of the data. In this method, a percentage of the highest values of connections is selected as the threshold. The highest classification performance is observed with the Corr method, achieving an accuracy of 92.59%, as shown in this table. On the other hand, the ImCoh shows the lowest classification performance with an accuracy of only 77.19%.

### 3.3. Classification performances: varying thresholds

In this section, we aimed to determine the most effective threshold for each connectivity method to enhance the classification accuracy of the CNN model, ultimately improving the accuracy and reliability of our functional connectivity-based classification approach. To achieve this, we applied a proportional thresholding on the obtained connectivity matrices from 10 to 90% with steps of 10%. The performance of the CNN classifier in discriminating AD, FTD, and HC with the four functional connectivity methods is presented in Table 4. Notably, the Corr and AEC methods demonstrated the highest classification performance, with accuracy values ranging from 82.55 to 92.59% across the nine proportional thresholding values. Particularly, we observe that retaining only 20% of the strongest connections yields the best classification performance, achieving an accuracy of 92.59% with Corr method. The comparison of the performance of functional connectivity methods across various proportional thresholding values is illustrated in Figure 4.

### 3.4. Classification performances without any thresholding on connectivity matrix

Table 5 reports the classification performance of different weighted FC without any thresholding. Interestingly, using raw (non-thresholded) connectivity matrices led to the highest classification performance, compared to using thresholded matrices. This means that setting a threshold may cause important

TABLE 4 Performance evaluation of CNN model with proportional thresholding (PT): exploring nine PT values from 10 to 90% across different functional connectivity methods.

Threshold (%)	Methods	ACC	Sensitivity	Specificity	F1 score
10	CNN-PSI	80.51	79.49	92.58	82.46
	CNN-ImCoh	75.15	72.75	87.46	74.11
	CNN-Corr	<b>89.18</b>	<b>90.17</b>	<b>94.76</b>	<b>90.53</b>
	CNN-AEC	85.19	86.52	93.73	86.91
20	CNN-PSI	87.23	89.04	93.28	88.3
	CNN-ImCoh	77.19	74.59	86.27	76.47
	CNN-Corr	<b>92.59</b>	<b>94.38</b>	<b>95.22</b>	<b>92.82</b>
	CNN-AEC	89.86	89.91	95.07	90.12
30	CNN-PSI	86.74	86.62	93.43	86.82
	CNN-ImCoh	76.12	76.97	85.67	74.36
	CNN-Corr	89.77	88.48	95.37	89.74
	CNN-AEC	<b>89.96</b>	<b>88.20</b>	<b>96.27</b>	<b>90.36</b>
40	CNN-PSI	87.62	87.08	94.18	87.94
	CNN-ImCoh	75.54	73.77	87.01	74.84
	CNN-Corr	<b>91.03</b>	<b>92.42</b>	<b>95.82</b>	<b>91.73</b>
	CNN-AEC	89.67	88.97	84.17	90.24
50	CNN-PSI	86.65	88.2	92.84	87.3
	CNN-ImCoh	77.68	75	86.57	75.63
	CNN-Corr	<b>90.35</b>	<b>88.20</b>	<b>96.93</b>	<b>90.89</b>
	CNN-AEC	89.38	89.89	94.63	89.89
60	CNN-PSI	84.8	85.92	91.83	85.25
	CNN-ImCoh	76.61	76.97	86	74.36
	CNN-Corr	<b>88.79</b>	<b>88.76</b>	<b>93.88</b>	<b>88.64</b>
	CNN-AEC	88.5	87.64	95.37	89.27
70	CNN-PSI	82.26	81.92	91.79	82.51
	CNN-ImCoh	77.88	73.88	89.85	76.56
	CNN-Corr	<b>87.52</b>	<b>87.56</b>	<b>93.73</b>	<b>88.18</b>
	CNN-AEC	86.26	86.85	94.33	86.45
80	CNN-PSI	82.46	80.9	92.97	83.43
	CNN-ImCoh	77	72.75	88.36	74.75
	CNN-Corr	85.96	87.09	92.69	86.89
	CNN-AEC	<b>86.45</b>	<b>87.08</b>	<b>93.88</b>	<b>87.02</b>
90	CNN-PSI	79.92	82.02	89.4	81.22
	CNN-ImCoh	78.17	76.12	87.16	77.16
	CNN-Corr	81.77	80.34	93.99	83.72
	CNN-AEC	<b>82.55</b>	<b>80.05</b>	<b>90.50</b>	<b>82.77</b>

The bold values represent the best results obtained by the proposed CNN.

information about connections between brain regions to be lost. Discarding weaker connections by setting a threshold can reduce the classifier's accuracy in distinguishing between groups. Additionally, the optimal threshold value can vary depending on the used FC method, making it difficult to choose an appropriate threshold. Therefore, using non-thresholded

connectivity matrices may better represent the connectivity patterns and capture subtle differences between groups. We compared four functional connectivity methods and found that the AEC method was the most effective, while the ImCoh method was the least effective, in distinguishing between AD, FTD, and HC subjects.

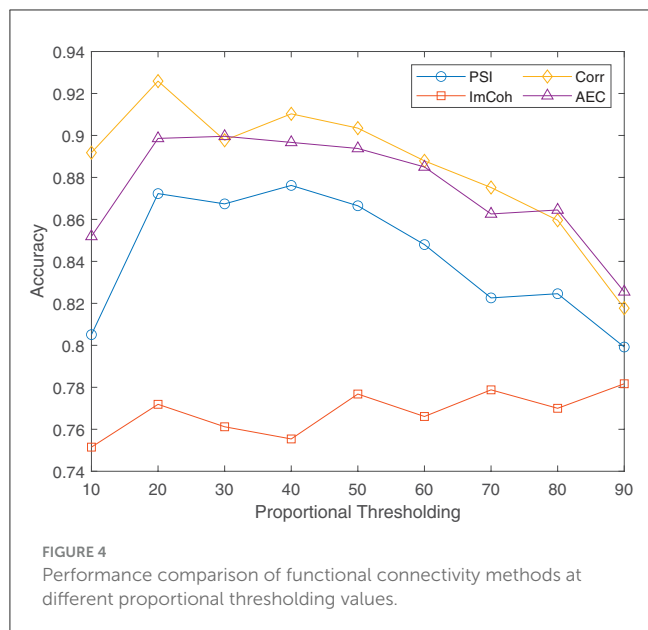


FIGURE 4 Performance comparison of functional connectivity methods at different proportional thresholding values.

TABLE 5 The performances of different weighted FC without any thresholding (median %).

Methods	ACC	Sensitivity	Specificity	F1 score
CNN-PSI	93.37	93.66	96.59	93.22
CNN-ImCoh	77.10	78.09	85.50	75.85
CNN-Corr	93.47	92.02	96.17	93.22
CNN-AEC	<b>94.54</b>	<b>95.22</b>	<b>96.72</b>	<b>94.56</b>

The bold values represent the best results obtained by the proposed CNN.

When we compare FC matrices using AEC among AD, FTD, and HC subjects, we observed that FTD patients had stronger connections in frontal and temporal regions than HC subjects (Figure 5). These results align with a study that used fMRI to investigate functional connectivity in mild cognitive impairment (MCI) and AD patients compared to healthy controls by (26). They found that AD patients had increased functional connectivity in the prefrontal cortex compared to healthy controls. Additionally, FTD patients showed disruptions in functional connectivity that were more widespread, particularly in regions affected by the disease, such as the frontal and temporal lobes (27).

### 3.5. Comparison of FC methods across various frequency bands

The division of EEG signals into frequency bands is a widely adopted approach in Alzheimer's disease research due to the distinct neural activity patterns observed at different frequency ranges. Certain frequency bands have been associated with specific cognitive functions and brain regions affected by the disease. For instance, abnormalities in the low-gamma frequency range have been linked to memory impairment and cognitive decline, while changes in delta and theta bands may indicate disruptions in attention and executive function. By examining EEG signals in frequency bands, several studies (28, 29), aim to capture these

specific neural signatures related to Alzheimer's disease pathology, thus enhancing the ability of classification models to detect disease-related patterns.

For the delta frequency band, the corresponding connectivity matrix has only extremely high values which make the classification fail. Therefore, we focus solely on the four other frequency bands (theta, alpha, beta, low-gamma) for analysis.

Tables 6–8 present the classification performance of the CNN model across different functional connectivity methods, considering various frequency bands and thresholding techniques. Among the three threshold techniques, the CNN classification model utilizing functional connectivity measures without any thresholding demonstrated superior performance, surpassing the accuracy of the model employing functional connectivity methods with both absolute and proportional thresholds, achieving an accuracy of 60.33%.

In terms of classification performance of the three groups, the EEG Low-gamma band information exhibited the highest performance across all functional connectivity measures. Notably, when using the AEC method without any thresholding, a significant accuracy improvement was observed, resulting in an accuracy of 60.33%. However, when comparing the classification of EEG frequency bands and the whole EEG spectrum, we can conclude that the classification of all EEG spectrum frequencies ranging from 0.5 to 45 Hz outperformed the classification based on individual EEG frequency bands. This suggests that considering the entire EEG spectrum provides valuable information for accurate discrimination of the three groups—AD, FTD, and HC—using the CNN model with functional connectivity measures.

### 3.6. Evaluation of metrics from graph analysis

In addition to evaluating the performances of functional connectivity classification using the proposed CNN model, we have explored an alternative approach using the graph analysis, where graph metrics are employed to assess functional connectivity. This approach allows us to gain insights into the network-level properties and dynamics, providing a comprehensive understanding of the brain's functional organization in our study. In this study, we chose to present only the results of the Corr, PSI, and AEC methods for assessing graph properties in each EEG frequency band across the three groups. The decision to exclude the ImCoh method from the presentation of results is based on its lower classification performance when compared to the other three methods for all thresholding techniques and across all three groups.

In order to analyze the properties and characteristics of the brain network, Table 9 displays the graph metrics for functional connectivity networks in different frequency bands with an absolute threshold of 0.7 using AEC method for three distinct groups: AD patients, HC, and FTD subjects. The graph metrics provide valuable insights into the topology and efficiency of brain networks in each group. Figure 6 illustrates the network connectivity between 19 electrodes of AD, FTD, and HC groups on

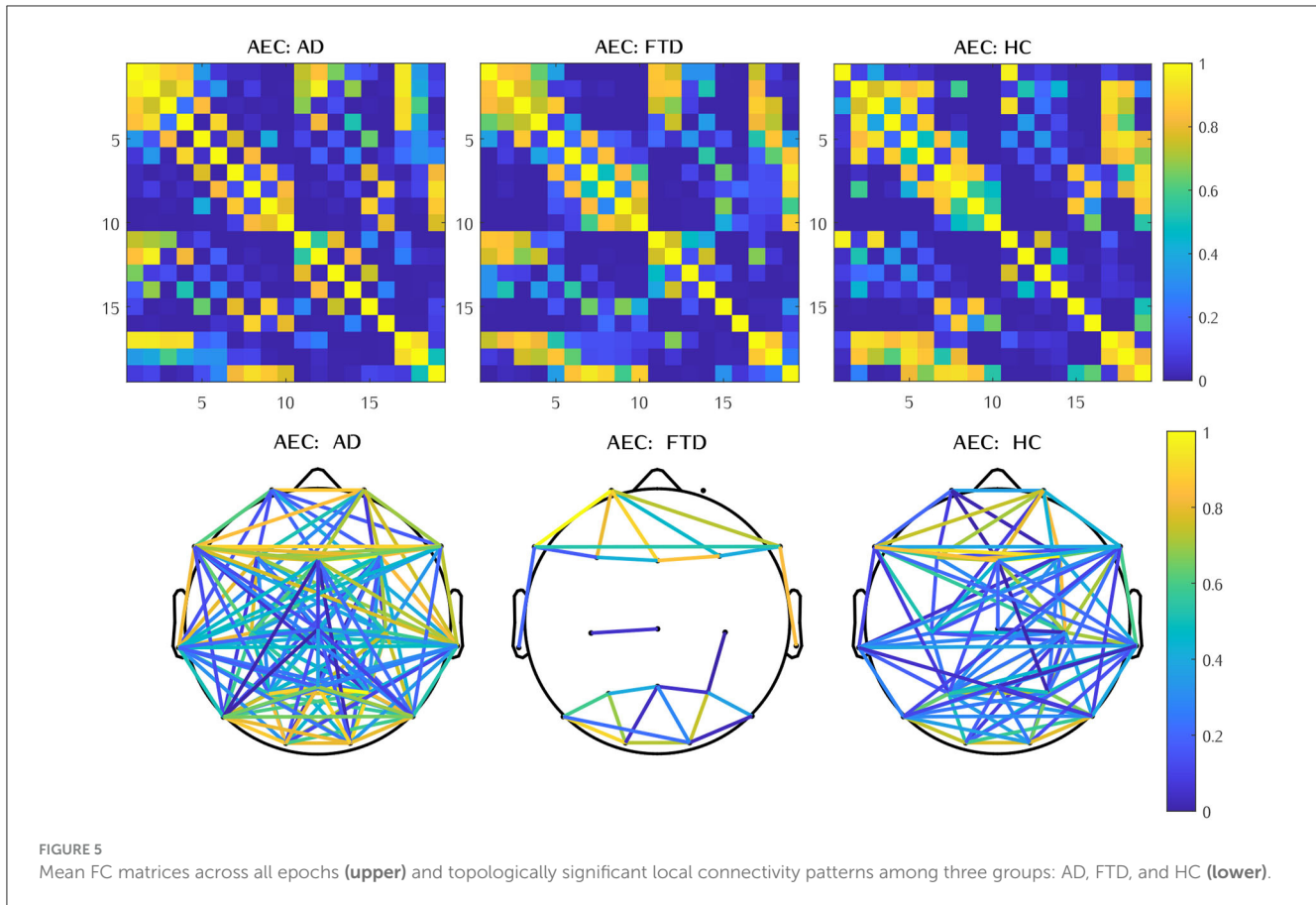


TABLE 6 Performance comparison of FC methods across various frequency bands *without any thresholding* (median %).

FC method	Frequency band	ACC	Sensitivity	Specificity	F1 score
AEC	Theta	52.92	58.15	68.66	53.56
	Alpha	51.66	52.11	69.33	52.37
	Beta	54.09	49.53	62.61	55.31
	Low-gamma	<b>60.33</b>	<b>56.10</b>	<b>80.33</b>	<b>61.05</b>
Corr	Theta	47.86	32.58	83.73	39.93
	Alpha	50.97	29.49	88.96	39.25
	Beta	51.36	51.4	72	49.39
	Low-gamma	<b>53.51</b>	<b>53.29</b>	<b>71.50</b>	<b>55.10</b>
PSI	Theta	52.24	47.47	76.72	49.63
	Alpha	54.58	47.89	78.33	53.68
	Beta	57.12	52.53	80.6	55.57
	Low-gamma	<b>58.09</b>	<b>63.48</b>	<b>70.75</b>	<b>58.10</b>

The bold values represent the best results obtained by the proposed CNN.

the Theta, Alpha, Beta and Low-gamma bands using AEC method and with an absolute threshold of 0.7.

Regarding the clustering coefficient metric, in the Alpha frequency band, the HC group shows the highest clustering coefficient, indicating a stronger tendency for nodes to form clusters in their brain networks. However, in the Beta and Low-gamma frequency bands, the FTD group have

high clustering coefficients, indicating significant clustering in their brain networks. Concerning efficiency metric, the FTD group exhibits the highest efficiency in the Theta and Beta frequency bands, implying that their brain networks facilitate information transmission more effectively compared to the AD and HC groups. With reference to betweenness centrality metric, in Theta, Beta, and Low-gamma frequency

TABLE 7 Performance comparison of FC methods across various frequency bands with an absolute threshold of 0.7 (median %).

FC method	Frequency band	ACC	Sensitivity	Specificity	F1 score
AEC	Theta	48.64	48.03	68.96	46.53
	Alpha	52.05	52.11	71	53.74
	Beta	50.1	47.19	71.34	46.93
	Low-gamma	<b>58.48</b>	<b>49.72</b>	<b>82.84</b>	<b>54.63</b>
Corr	Theta	51.46	50.56	70.6	49.11
	Alpha	46.98	50.41	74.3	43.31
	Beta	46.1	37.36	75.52	40.74
	Low-gamma	<b>49.81</b>	<b>41.85</b>	<b>77.46</b>	<b>45.43</b>
PSI	Theta	48.83	42.02	75.17	47.48
	Alpha	50.39	42.96	75.67	48.48
	Beta	50.39	39.75	88.49	45.01
	Low-gamma	<b>52.92</b>	<b>42.98</b>	<b>80.60</b>	<b>47.89</b>

The bold values represent the best results obtained by the proposed CNN.

TABLE 8 Performance comparison of FC methods across various frequency bands using a proportional threshold of keeping the highest 20% of values (median %).

FC method	Frequency band	ACC	Sensitivity	Specificity	F1 score
AEC	Theta	44.74	30.28	82.33	39.09
	Alpha	42.11	38.2	65.67	37.67
	Beta	50.1	54.92	78.01	48.73
	Low-gamma	<b>56.82</b>	<b>41.80</b>	<b>86.42</b>	<b>50.62</b>
Corr	Theta	46	27.93	85.67	37.72
	Alpha	45.32	22.47	84.33	29.57
	Beta	48.25	53.05	67	48.37
	Low-gamma	<b>50.88</b>	<b>44.37</b>	<b>77.33</b>	<b>50.33</b>
PSI	Theta	45.61	29.81	84	39.14
	Alpha	36.55	36.52	71.94	38.58
	Beta	47.66	21.07	89.7	30
	Low-gamma	<b>48.44</b>	<b>50.84</b>	<b>67.76</b>	<b>48.07</b>

The bold values represent the best results obtained by the proposed CNN.

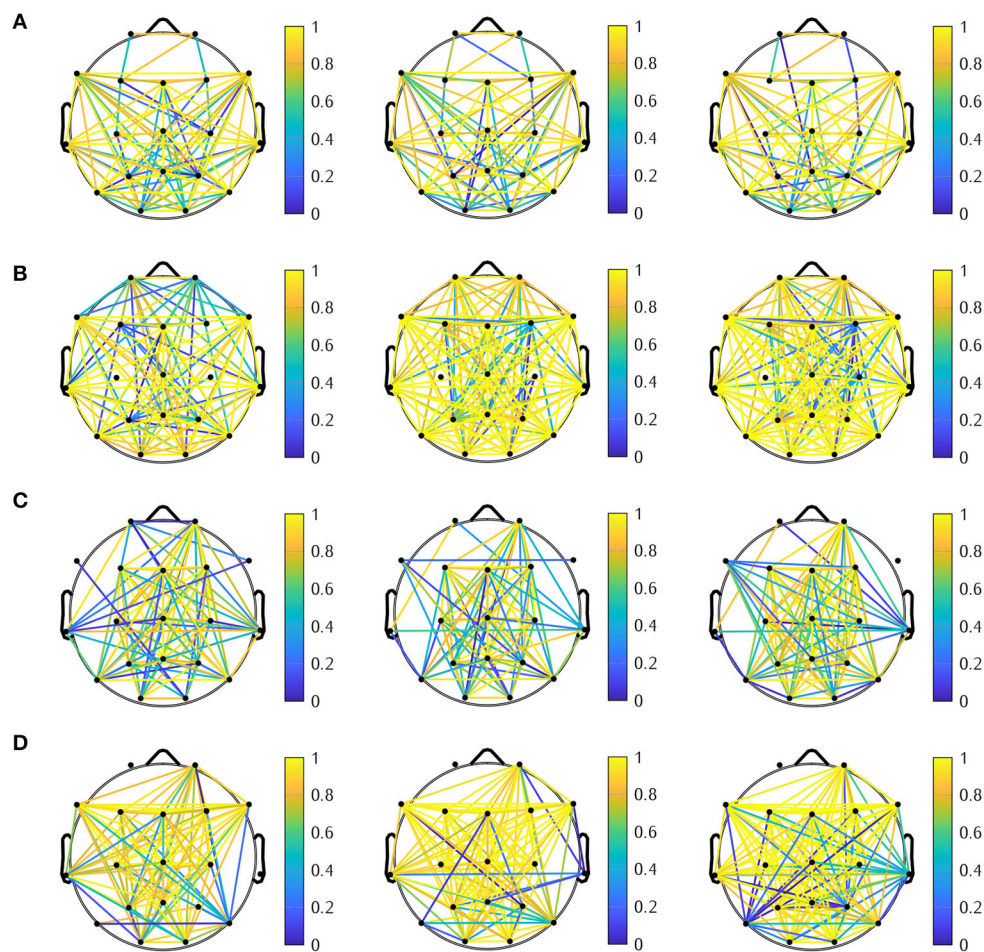
TABLE 9 Comparison of graph metrics using AEC method with an absolute threshold in AD, HC, and FTD groups.

Frequency bands	Mean degree			Clustering coefficient			Efficiency			Betweenness centrality		
	AD	HC	FTD	AD	HC	FTD	AD	HC	FTD	AD	HC	FTD
Theta	11.89	10.95	<b>17.05</b>	<b>0.93</b>	0.89	0.91	0.65	0.62	<b>0.83</b>	13.05	<b>13.15</b>	2.94
Alpha	13.68	<b>15.89</b>	12.84	0.92	<b>0.99</b>	0.98	0.68	<b>0.80</b>	0.68	5.36	5.26	<b>10.73</b>
Beta	13.26	10.84	<b>14.32</b>	0.94	0.83	<b>0.99</b>	0.69	0.62	<b>0.73</b>	9.57	<b>12.10</b>	8.10
Low-gamma	13.05	12.42	<b>13.47</b>	0.91	0.88	<b>1.00</b>	<b>0.64</b>	0.61	<b>0.64</b>	3.89	<b>5.15</b>	2.94

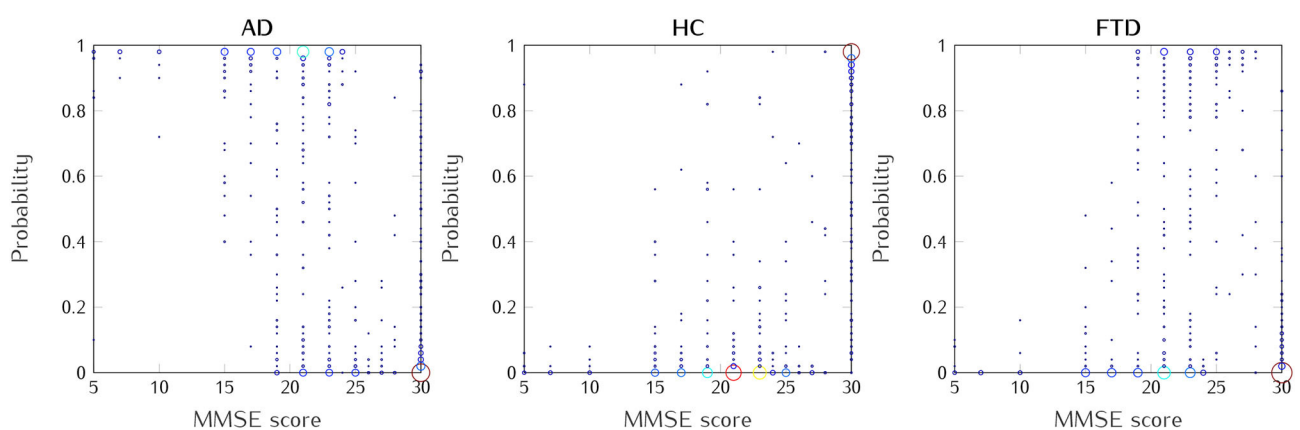
The bold values represent the best results achieved for different graph metrics.

bands, the HC group consistently shows higher betweenness centrality than the AD and FTD groups, indicating a relatively higher influence of specific nodes in their brain networks.

Overall, the results suggest that the FTD group tends to have more interconnected brain networks (higher mean degree) with efficient information transmission (higher efficiency) compared to the AD and HC groups. On the other hand,



**FIGURE 6** Connectivity network of the AD (left), FTD (middle), and HC (right) groups on the (A) *theta*, (B) *alpha*, (C) *beta*, and (D) *Low-gamma* bands with an absolute threshold of 0.7.



**FIGURE 7** Relationship between MMSE scores and prediction probabilities for AD, HC, and FTD groups, at trial level. All healthy subjects/patients included.

the HC group shows stronger clustering tendencies (higher clustering coefficient) and more prominent nodes facilitating communication between other nodes (higher betweenness centrality) in their brain networks. These findings highlight

the distinct characteristics of brain networks in each group, potentially providing valuable insights into the underlying neurodegenerative processes and the healthy brain's functional organization.

TABLE 10 Comparison of the classification accuracy of AD patients with other previous studies.

References	Feature set	Classifier	Classes	Best Acc
Jiao et al. (30)	Absolute power, relative power, Hjorth metrics (activity, mobility, and complexity) and time-frequency property (STFT)	LDA, SVM	AD/MCI/HC	Acc = 70%, (LDA) Acc = 70.2% (SVM)
Tăutan et al. (20)	Temporal features from EEG (maximum, minimum, mean, skewness, and kurtosis), signal energy changes and TEP peaks	Random forest	AD/HC	Acc = 83.1%
Prado et al. (31)	Functional connectivity features in source space from EEG	eXtreme gradient boosting	AD/HC AD/FTD	Acc = 87.1% Acc = 86.7%
Herzog et al. (32)	High order functional connectivity features from EEG source space	Random forest	FTD/HC AD/HC	Acc = 93.15% Acc = 89%
Miltiadous et al. (10)	Energy of EEG rhythms, mean, variance, and IQR features	Decision trees, random forest, ANN, SVM, Naive Bayes, and KNN	AD/HC FTD/HC AD/FTD	Acc = 99.1% Acc = 98% Acc = 91%
Safi and Safi (22)	Hjorth parameters EEG frequency bands, using DWT	SVM, RLDA, and KNN	AD/HC	Acc = 97.64% (KNN)
Adebisi et al. (15)	Functional connectivity features	SVM	AD/HC	Acc = 87.67%
Fiscon et al. (12)	Time-frequency features by applying both the Fourier and Wavelet transforms	Decision trees	AD/HC	Acc = 83%
Dottori et al. (16)	Functional connectivity features	SVM	FTD/HC AD/FTD AD/HC	Acc = 72.7% Acc = 72.2% Acc = 44.9%
Nishida et al. (33)	EEG rhythms energy from source space	KNN	FTD/HC AD/FHC FTD/AD	Acc = 85.8% Acc = 92.8% Acc = 89.9%
Lindau et al. (21)	EEG frequency bands features (from delta and theta bands)	Logistic regression	AD/FTD	Acc = 93.3%

### 3.7. Exploring the clinical implications of functional connectivity analysis

In this paper, our analysis of functional connectivity holds significant promise for clinical applications in the early diagnosis and management of dementia. By examining brain network interactions via EEG signals, we can potentially identify subtle changes preceding cognitive decline, thus serving as sensitive biomarkers for early detection. The high accuracy achieved by our shallow neural network model in classifying AD/FTD/HC cases underlines the diagnostic potential of functional connectivity analysis.

In Figure 7, we illustrate the relationship between the prediction probabilities of the AD, HC, and FTD groups and the MMSE scores identified in the testing set results. In the AD group (left), a higher MMSE score was linked to a lower prediction probability, while among HC subjects (middle), a higher MMSE score was associated with an increased prediction probability. For the FTD group (right), a higher prediction probability was observed when the MMSE score ranged between 18 and 27. These findings align with clinical observations, where a lower MMSE score typically indicates a more pronounced cognitive decline. Notably, for the present dataset, the average MMSE score was 17.75 (SD = 4.5) for the AD group, 22.17 (SD = 8.22) for the FTD group, and 30 for the HC group.

Consequently, the classification probabilities assigned to each group could serve as a measurable indicator of dementia progression, providing clinicians with an objective index for monitoring disease progression and evaluating treatment. This information could not only enhance clinical decision-making, but also facilitate personalized treatment strategies and improve patient care in the field of dementia. Beyond diagnosis, these results hold promise for monitoring disease progression and evaluating treatment efficacy, offering clinicians with a versatile set of tools to improve early detection and patient-centered care in dementia disorders.

### 3.8. Compared with previous studies

Table 10 illustrates the comparison between the classification result in our study and that of previous EEG studies. In recent years, several studies have explored the classification of dementia using EEG, employing various approaches. However, a particular study (30), stands out as it tested the performance of SVM and LDA models on a group of 890 subjects during their resting state. The study aimed to classify individuals into three levels: healthy controls (HC), mild cognitive impairment (MCI), and Alzheimer's disease (AD). The SVM model, utilizing features extracted from EEG such as absolute and relative power, Hajorth metrics, and time-frequency properties, achieved the highest accuracy of 70.2%.

It's worth noting that most other studies focused on binary classification between different groups, such as AD/HC, FTD/HC, and AD/FTD.

## 4. Conclusion

In this work, we propose an automatic diagnosis method for AD, FTD, and HC subjects using EEG time series and deep learning. We use four different approaches to infer the matrix of connections between brain areas: Phase Synchronization Index, Pearson's correlation, Imaginary part of Coherency, and Amplitude Envelope Correlation. These matrices are trained with CNN-based models. In addition, we compared the performance of conventional methods, including SVM, LDA, and KNN, with the shallow CNN model for different feature extraction paradigms—time-frequency features and functional connectivity features. Our comparisons revealed that the CNN model outperformed conventional methods in dementia classification for both time-frequency and functional connectivity features. The comparison of the four different approaches shows that our CNN-based method is more accurate, demonstrating the importance of network topology in describing brain data. Our findings revealed that the CNN-AEC without any thresholding method is the most effective among the methods we studied, reaching 94.54% cross-validation accuracy. The results suggest that EEG-based measures of functional connectivity, when combined with convolutional neural network, provide an accurate, reliable and rapid method of dementia classification and can significantly improve the efficiency of AD diagnosis. The high performance of the basic CNN model suggests that a simple neural network architecture may be adequate for classifying dementia diseases. The pipeline is general and could be used for other mental disorder in which EEG time series can be recorded. In future work, it would be interesting to convert the EEG recordings captured at the scalp level into EEG time series data in the source space using source reconstruction. The CNN classifier will be assessed by comparing its performance in both the sensor space and the source space.

## Data availability statement

The original contributions presented in the study are included in the article/supplementary material, further inquiries can be directed to the corresponding author.

## References

- Oliveira AMd, Radanovic M, Mello PCHd, Buchain PC, Vizzotto ADB, Celestino DL, et al. Nonpharmacological interventions to reduce behavioral and psychological symptoms of dementia: a systematic review. *BioMed Res Int.* (2015) 2015:218980. doi: 10.1155/2015/218980
- Lattante S, Ciura S, Rouleau GA, Kabashi E. Defining the genetic connection linking amyotrophic lateral sclerosis (ALS) with frontotemporal dementia (FTD). *Trends Genet.* (2015) 31:263–73. doi: 10.1016/j.tig.2015.03.005
- Mendez MF, Perryman KM, Miller BL, Cummings JL. Behavioral differences between frontotemporal dementia and Alzheimer's disease: a comparison on the BEHAVE-AD rating scale. *Int Psychogeriatr.* (1998) 10:155–62. doi: 10.1017/S1041610298005262
- Perry RJ, Hodges JR. Differentiating frontal and temporal variant frontotemporal dementia from Alzheimer's disease. *Neurology.* (2000) 54:2277–84. doi: 10.1212/WNL.54.12.2277
- Mantzavinos V, Alexiou A. Biomarkers for Alzheimer's disease diagnosis. *Curr Alzheimer Res.* (2017) 14:1149–54. doi: 10.2174/1567205014666170203125942
- Biagetti G, Crippa P, Falaschetti L, Luzzi S, Turchetti C. Classification of Alzheimer's disease from EEG signal using robust-PCA feature extraction. *Proc Comput Sci.* (2021) 192:3114–22. doi: 10.1016/j.procs.2021.09.084
- Ramos-Aguilar R, Olvera-López JA, Olmos-Pineda I, Sánchez-Urrieta S. Feature extraction from EEG spectrograms for epileptic seizure

## Author contributions

ZA: Formal analysis, Investigation, Methodology, Writing—original draft. BX: Supervision, Validation, Visualization, Writing—review and editing, Conceptualization, Investigation. GD: Supervision, Validation, Visualization, Writing—review and editing, Conceptualization, Investigation. JM: Supervision, Validation, Visualization, Writing—review and editing, Conceptualization, Investigation. SP: Supervision, Validation, Visualization, Writing—review and editing, Conceptualization, Investigation.

## Funding

The author(s) declare financial support was received for the research, authorship, and/or publication of this article. The authors acknowledge support from the open-access publishing fund provided by both AXIAUM Université Montpellier-ISDM (ANR-20-THIA-0005-01) and the EuroMov Digital Health in Motion Lab.

## Acknowledgments

ZA received a doctoral fellowship from AXIAUM Université Montpellier-ISDM (ANR-20-THIA-0005-01) and ED I2S in France.

## Conflict of interest

The authors declare that the research was conducted in the absence of any commercial or financial relationships that could be construed as a potential conflict of interest.

## Publisher's note

All claims expressed in this article are solely those of the authors and do not necessarily represent those of their affiliated organizations, or those of the publisher, the editors and the reviewers. Any product that may be evaluated in this article, or claim that may be made by its manufacturer, is not guaranteed or endorsed by the publisher.



- detection. *Pattern Recogn Lett.* (2020) 133:202–9. doi: 10.1016/j.patrec.2020.03.006
8. Friston KJ. Functional and effective connectivity: a review. *Brain Connect.* (2011) 1:13–36. doi: 10.1089/brain.2011.0008
9. Bullmore E, Sporns O. Complex brain networks: graph theoretical analysis of structural and functional systems. *Nat Rev Neurosci.* (2009) 10:186–98. doi: 10.1038/nrn2575
10. Miltiadous A, Tzimourta KD, Giannakeas N, Tsiouras MG, Afrantou T, Ioannidis P, et al. Alzheimer's disease and frontotemporal dementia: a robust classification method of EEG signals and a comparison of validation methods. *Diagnostics.* (2021) 11:1437. doi: 10.3390/diagnostics11081437
11. Ajra Z, Xu B, Dray G, Montmain J, Perrey S. Mental arithmetic task classification with convolutional neural network based on spectral-temporal features from EEG. In: *2022 44th Annual International Conference of the IEEE Engineering in Medicine & Biology Society (EMBC)* (Glasgow). (2022). p. 52–5. doi: 10.1109/EMBC48229.2022.9870887
12. Fison G, Weitschek E, Cialini A, Felici G, Bertolazzi P, De Salvo S, et al. Combining EEG signal processing with supervised methods for Alzheimer's patients classification. *BMC Med Inform Decis Mak.* (2018) 18:35. doi: 10.1186/s12911-018-0613-y
13. Bruns A, Eckhorn R, Jokeit H, Ebner A. Amplitude envelope correlation detects coupling among incoherent brain signals. *Neuroreport.* (2000) 11:1509–14. doi: 10.1097/00001756-200005150-00029
14. Sun S, Li X, Zhu J, Wang Y, La R, Zhang X, et al. Graph theory analysis of functional connectivity in major depression disorder with high-density resting state EEG data. *IEEE Trans Neural Syst Rehabil Eng.* (2019) 27:429–39. doi: 10.1109/TNSRE.2019.2894423
15. Adebisi AT, Gonuguntla V, Lee HW, Veluvolu KC. Classification of dementia associated disorders using eeg based frequent subgraph technique. In: *2020 International Conference on Data Mining Workshops (ICDMW)* (Sorrento). (2020). p. 613–20. doi: 10.1109/ICDMW51313.2020.00087
16. Dottori M, Sede no L, Martorell Caro M, Alifano F, Hesse E, Mikulan E, et al. Towards affordable biomarkers of frontotemporal dementia: a classification study via network's information sharing. *Sci Rep.* (2017) 7:3822. doi: 10.1038/s41598-017-04204-8
17. Sakellariou D, Koupparis AM, Kokkinos V, Koutroumanidis M, Kostopoulos GK. Connectivity measures in EEG microstructural sleep elements. *Front Neuroinform.* (2016) 10:5. doi: 10.3389/fninf.2016.00005
18. Hipp JF, Hawellek DJ, Corbetta M, Siegel M, Engel AK. Large-scale cortical correlation structure of spontaneous oscillatory activity. *Nat Neurosci.* (2012) 15:884–90. doi: 10.1038/nn.3101
19. Abazid M, Houmani N, Boudy J, Dorizzi B, Mariani J, Kinugawa K. A comparative study of functional connectivity measures for brain network analysis in the context of AD detection with EEG. *Entropy.* (2021) 23:1553. doi: 10.3390/e23111553
20. Tăutan AM, Casula EP, Pellicciari MC, Borghi I, Maiella M, Bonni S, et al. TMS-EEG perturbation biomarkers for Alzheimer's disease patients classification. *Sci Rep.* (2023) 13:7667. doi: 10.1038/s41598-022-22978-4
21. Lindau M, Jelic V, Johansson SE, Andersen C, Wahlund LO, Almkvist O. Quantitative EEG abnormalities and cognitive dysfunctions in frontotemporal dementia and Alzheimer's disease. *Dement Geriatr Cogn Disord.* (2003) 15:106–14. doi: 10.1159/000067973
22. Safi MS, Safi SMM. Early detection of Alzheimer's disease from EEG signals using Hjorth parameters. *Biomed Signal Process Control.* (2021) 65:102338. doi: 10.1016/j.bspc.2020.102338
23. Stam Cv, Van Straaten E. The organization of physiological brain networks. *Clin Neurophysiol.* (2012) 123:1067–87. doi: 10.1016/j.clinph.2012.01.011
24. Bastos AM, Schoffelen JM. A tutorial review of functional connectivity analysis methods and their interpretational pitfalls. *Front Syst Neurosci.* (2016) 9:175. doi: 10.3389/fnsys.2015.00175
25. Shandilya SG, Timme M. Inferring network topology from complex dynamics. *N J Phys.* (2011) 13:013004. doi: 10.1088/1367-2630/13/1/013004
26. Penalba-Sánchez L, Oliveira-Silva P, Sumich AL, Cifre I. Increased functional connectivity patterns in mild Alzheimer's disease: a rsfMRI study. *Front Aging Neurosci.* (2022) 14:1037347. doi: 10.3389/fnagi.2022.1037347
27. Hafkemeijer A, Möller C, Dopfer EG, Jiskoot LC, Van Den Berg-Huysmans AA, Van Swieten JC, et al. A longitudinal study on resting state functional connectivity in behavioral variant frontotemporal dementia and Alzheimer's disease. *J Alzheimer's Dis.* (2017) 55:521–37. doi: 10.3233/JAD-150695
28. Abazid M, Houmani N, Dorizzi B, Boudy J, Mariani J, Kinugawa K. Weighted brain network analysis on different stages of clinical cognitive decline. *Bioengineering.* (2022) 9:62. doi: 10.3390/bioengineering9020062
29. Babiloni C, Blinowska K, Bonanni L, Cichocki A, De Haan W, Del Percio C, et al. What electrophysiology tells us about Alzheimer's disease: a window into the synchronization and connectivity of brain neurons. *Neurobiol Aging.* (2020) 85:58–73. doi: 10.1016/j.neurobiolaging.2019.09.008
30. Jiao B, Li R, Zhou H, Qing K, Liu H, Pan H, et al. Neural biomarker diagnosis and prediction to mild cognitive impairment and Alzheimer's disease using EEG technology. *Alzheimer's Res Ther.* (2023) 15:1–14. doi: 10.1186/s13195-023-01181-1
31. Prado P, Moguilner S, Mejía JA, Sainz-Ballesteros A, Otero M, Birba A, et al. Source space connectomics of neurodegeneration: one-metric approach does not fit all. *Neurobiol Dis.* (2023) 179:106047. doi: 10.1016/j.nbd.2023.106047
32. Herzog R, Rosas FE, Whelan R, Fittipaldi S, Santamaria-Garcia H, Cruzat J, et al. Genuine high-order interactions in brain networks and neurodegeneration. *Neurobiol Dis.* (2022) 175:105918. doi: 10.1016/j.nbd.2022.105918
33. Nishida K, Yoshimura M, Isotani T, Yoshida T, Kitaura Y, Saito A, et al. Differences in quantitative EEG between frontotemporal dementia and Alzheimer's disease as revealed by LORETA. *Clin Neurophysiol.* (2011) 122:1718–25. doi: 10.1016/j.clinph.2011.02.011