



HAL
open science

Poly(Lactic Acid)-Based Graft Copolymers: Syntheses Strategies and Improvement of Properties for Biomedical and Environmentally Friendly Applications

Jean Coudane, H el ene van den Berghe, Julia Mouton, Xavier Garric,
Benjamin Nottelet

► **To cite this version:**

Jean Coudane, H el ene van den Berghe, Julia Mouton, Xavier Garric, Benjamin Nottelet. Poly(Lactic Acid)-Based Graft Copolymers: Syntheses Strategies and Improvement of Properties for Biomedical and Environmentally Friendly Applications: A Review. *Molecules*, 2022, 27 (13), pp.4135. 10.3390/molecules27134135 . hal-03752623

HAL Id: hal-03752623

<https://imt-mines-ales.hal.science/hal-03752623>

Submitted on 17 Aug 2022

HAL is a multi-disciplinary open access archive for the deposit and dissemination of scientific research documents, whether they are published or not. The documents may come from teaching and research institutions in France or abroad, or from public or private research centers.

L'archive ouverte pluridisciplinaire **HAL**, est destin ee au d ep ot et  a la diffusion de documents scientifiques de niveau recherche, publi es ou non,  emanant des  tablissements d'enseignement et de recherche fran ais ou  trangers, des laboratoires publics ou priv es.



Distributed under a Creative Commons Attribution 4.0 International License

Review

Poly(Lactic Acid)-Based Graft Copolymers: Syntheses Strategies and Improvement of Properties for Biomedical and Environmentally Friendly Applications: A Review

Jean Coudane ^{1,*}, H el ene Van Den Berghe ¹, Julia Mouton ^{2,3} , Xavier Garric ¹ and Benjamin Nottelet ¹ 

- ¹ Department of Polymers for Health and Biomaterials, Institut des Biomol cules Max Mousseron, UMR 5247, University of Montpellier, CNRS, ENSCM, 34000 Montpellier, France; helene.van-den-berghe@umontpellier.fr (H.V.D.B.); xavier.garric@umontpellier.fr (X.G.); benjamin.nottelet@umontpellier.fr (B.N.)
- ² Polymers Composites and Hybrids, IMT Mines d'Al s, 30100 Al s, France; julia.mouton@epf.fr
- ³ EPF Graduate School of Engineering, 34000 Montpellier, France
- * Correspondence: jean.coudane@umontpellier.fr

Abstract: As a potential replacement for petroleum-based plastics, biodegradable bio-based polymers such as poly(lactic acid) (PLA) have received much attention in recent years. PLA is a biodegradable polymer with major applications in packaging and medicine. Unfortunately, PLA is less flexible and has less impact resistance than petroleum-based plastics. To improve the mechanical properties of PLA, PLA-based blends are very often used, but the outcome does not meet expectations because of the non-compatibility of the polymer blends. From a chemical point of view, the use of graft copolymers as a compatibilizer with a PLA backbone bearing side chains is an interesting option for improving the compatibility of these blends, which remains challenging. This review article reports on the various graft copolymers based on a PLA backbone and their syntheses following two chemical strategies: the synthesis and polymerization of modified lactide or direct chemical post-polymerization modification of PLA. The main applications of these PLA graft copolymers in the environmental and biomedical fields are presented.

Keywords: poly(lactic acid); chemical modification; graft copolymers; compatibilization; biomedical and environmental applications



Citation: Coudane, J.; Van Den Berghe, H.; Mouton, J.; Garric, X.; Nottelet, B. Poly(Lactic Acid)-Based Graft Copolymers: Syntheses Strategies and Improvement of Properties for Biomedical and Environmentally Friendly Applications: A Review. *Molecules* **2022**, *27*, 4135. <https://doi.org/10.3390/molecules27134135>

Academic Editors: Marek Brzeziński and Małgorzata Bařko

Received: 8 June 2022
Accepted: 23 June 2022
Published: 28 June 2022

Publisher's Note: MDPI stays neutral with regard to jurisdictional claims in published maps and institutional affiliations.



Copyright:   2022 by the authors. Licensee MDPI, Basel, Switzerland. This article is an open access article distributed under the terms and conditions of the Creative Commons Attribution (CC BY) license (<https://creativecommons.org/licenses/by/4.0/>).

1. Introduction

Today, bioplastics, compounds derived from sustainable sources, are one of the best alternatives to petroleum-based plastics. They are natural or synthetic biopolymers, and include poly(lactic acid) (PLA), which is of great commercial interest due to various factors. First, PLA is produced by polymerizing lactide, a derivative of lactic acid industrially produced from plants, making it a biosourced thermoplastic. As such, extrusion, molding, injection molding, thermoforming, and fiber spinning are largely used to process PLA for many industrial applications. Lastly, it forms an intrinsically biocompatible system in a living environment and is biodegradable, with a tunable degradability as a function of its molecular weight and tacticity, which makes it suitable for many applications in biomedical and environmental fields such as tissue engineering, drug delivery, "green" packaging, textiles, etc. [1,2].

Despite these clear advantages, PLA suffers from some limitations. From an economical point of view, it remains more expensive than many non-biodegradable commodity polymers. Moreover, regarding its thermomechanical properties, it has a low toughness and poor impact strength. To overcome these limitations, polymer blends can provide the desired properties at a low cost through simple physical processes, rather than chemical approaches such as copolymerization reactions. Polymer blends and composites [3], as

well as plasticizers [4], are used to improve the mechanical properties of polymers. The melt blending of dissimilar polymers is a classic method for obtaining new enhanced properties. Unfortunately, PLA-based blends exhibit an insufficient performance because the blended polymers are often thermodynamically immiscible, resulting in a poor compatibility between the blended components [5]. This phenomenon is particularly important in high-molecular-weight polymers commonly found in the field of orthopedics.

In order to circumvent the compatibility problem, compatibilizers have been proposed [6]. Compatibilizers are used to improve the properties of immiscible or partially miscible polymer blends. They improve the adhesion between the blended polymers. Compatibilizers can be “reactive” (they chemically react with at least one of the two blended polymers) or “non-reactive” (they have secondary interactions with both polymers). More generally, these PLA compatibilizers may consist of a copolymer comprising the PLA and the polymer to be compatibilized. PLA-based copolymers can be of a “block” or “graft” architecture. It is necessary to have at least one reactive function on the PLA to obtain these blocks or graft copolymers. However, PLA only has reactive functions at its chain ends, typically alcohol and carboxylic acid functions. Therefore, it is quite easy to prepare block copolymers (di-, tri- or multi-blocks) from PLA. The most common PLA-based block copolymers are probably the amphiphilic PLA-*b*-Poly(ethylene glycol) (PEG) di-block copolymers and PLA-*b*-PEG-*b*-PLA triblock copolymers, in which the hydrophobicity of PLA is decreased and its toughness is improved [7]. There are many review articles on the formation of PLA-based block copolymers and their applications, especially in the biomedical field [7–9].

The reactive functions at the chain ends of PLA can also react with the reactive functions in the chain of certain polymers, such as polysaccharides, to give polymer-*g*-PLA graft copolymers in a so-called “classic” structure (Figure 1), where the polymer backbone is grafted with PLA side chains [10]. The synthesis of “reverse” structures, i.e., with a PLA main chain grafted with other polymer side chains is more challenging because, unlike polysaccharides, the PLA backbone is not functionalized. Therefore, it is necessary to first functionalize the PLA chain before subsequent grafting of polymer segments onto the PLA backbone. From a theoretical point of view, two methods can be used to obtain a functionalized PLA backbone: (i) copolymerization of a lactide with a pre-functionalized lactide and (ii) direct chemical modification of a preformed PLA chain. It is therefore the aim of the present review to focus on these relatively uncommon reverse PLA-*g*-polymer structures.

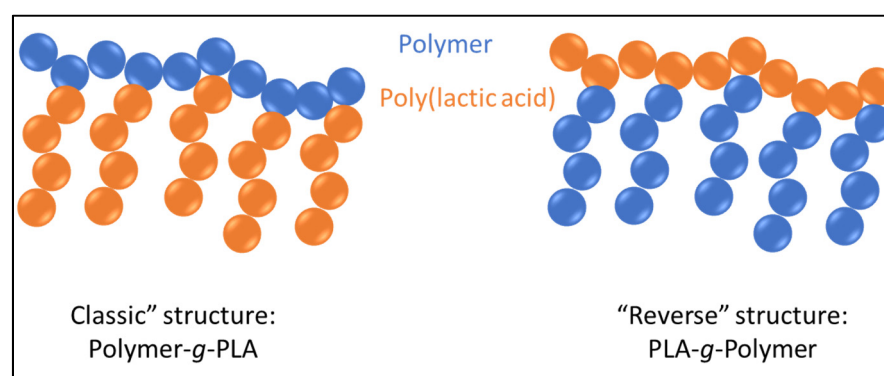


Figure 1. Illustration of “classic” and “reverse” structures of PLA-based graft copolymers.

2. Results

2.1. Copolymerization of Lactide with a Functionalized Lactide for the Preparation of PLA Graft Copolymers

To the best of our knowledge, according to the first method mentioned above, few functionalized lactides are described in the literature, and only a small proportion of these substituted lactides has been copolymerized with lactide to yield functionalized

PLA backbones [11–14]. For example, some lactides functionalized with benzyl, allyl and propargyl groups have also been prepared and copolymerized with lactide, but no polymer chains were subsequently grafted onto the PLA backbone [15].

Yu et al. prepared an alkyne-functionalized lactide that was copolymerized with lactide to give an alkyne-functionalized PLA. An azide-paclitaxel-PEG was then reacted with the alkyne-functionalized PLA via a Cu(I)-catalyzed azide–alkyne cycloaddition (CuAAC) click reaction to give a novel graft polymer–drug conjugate (GPDC): PLA-g-Paclitaxel-PEG (Figure 2) targeting sustained release of Paclitaxel [16]. Zhang et al. prepared and (co)polymerized a dipropargyloxylactide by ring opening polymerization (ROP) in the presence of $\text{Sn}(\text{Oct})_2$ and TBBA (tertbutylbenzyl alcohol). An azido-PEG (PEG-N3) was then grafted via CuAAC click chemistry (Figure 3) [17]. Turbidity, dynamic light scattering and NMR results suggested that these grafted copolymers exhibit a reversible thermo-responsive property, with LCST ranging from 22 to 69 °C depending on the molecular weight of the PEG.

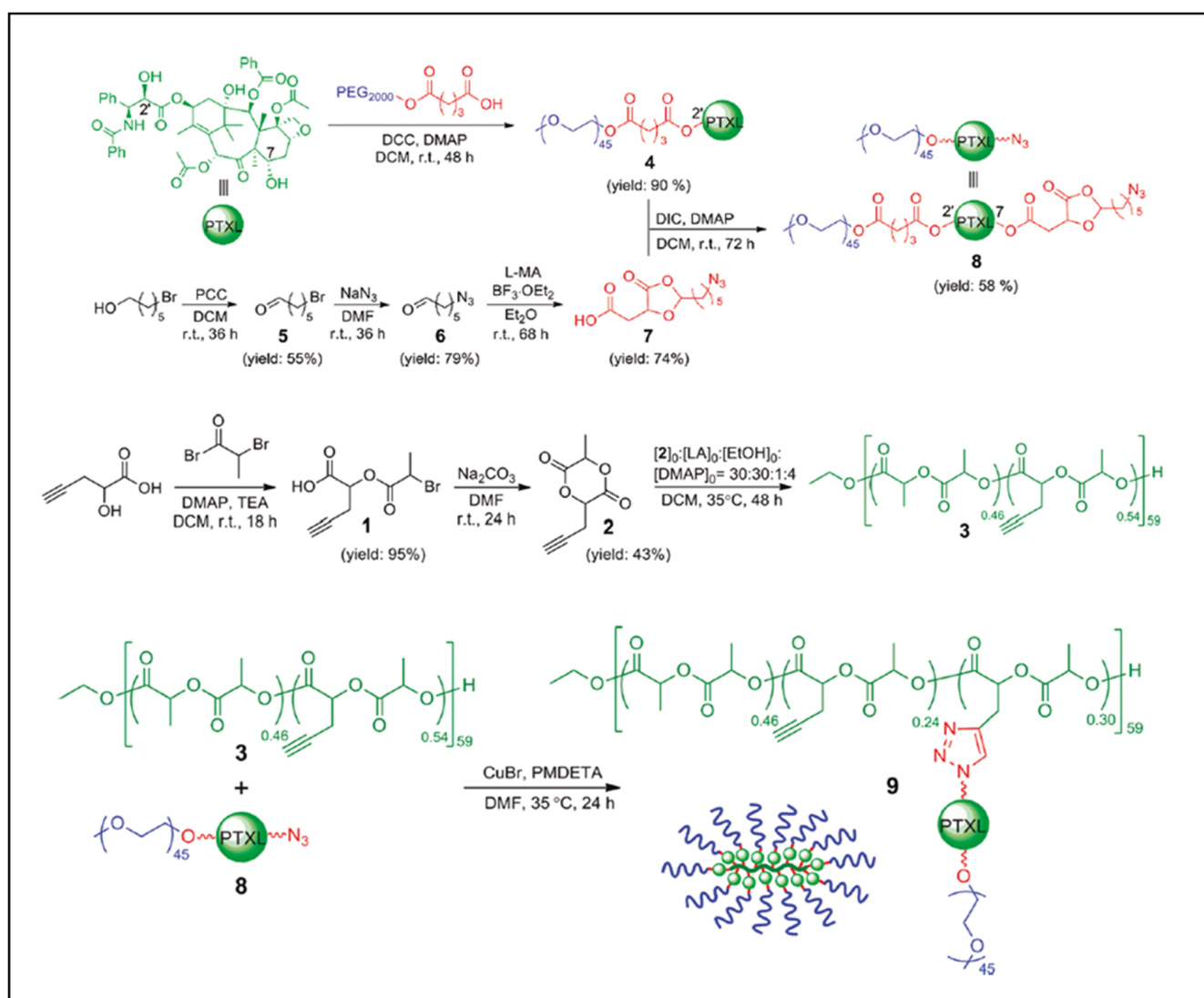


Figure 2. Reaction scheme for the synthesis of PLA-g-Paclitaxel-PEG (adapted from Yu et al. [16], Copyright American Chemical Society, reproduced with permission).

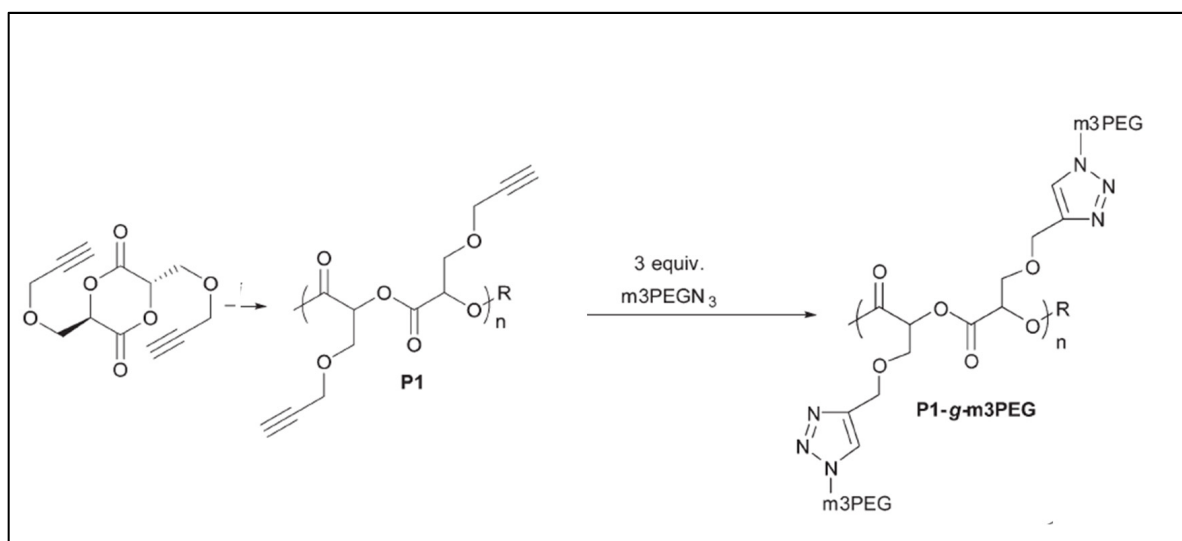


Figure 3. Reaction scheme for the synthesis of dipropargyloxymethyl PLA and the grafting of PEG via click a reaction (adapted from Zhang et al. [17], Copyright Royal Society of Chemistry, reproduced with permission).

In another synthetic method, Castillo et al. prepared a spiro lactide–heptene monomer that yielded a PEG-grafted lactide after reaction with an azido-PEG (Figure 4) [18]. This PEG-grafted lactide was then polymerized with molecular weights above 10kDa. Typically, polymerization was carried out in anhydrous CH₂Cl₂ with 1,5,7-triazabicyclo [4.4.0]dec-5-ene (TBD)/benzyl alcohol as the catalyst/initiator system. Preliminary biological studies showed that PLA-g-PEG reduced non-specific protein adsorption and cell adhesion compared to the original PLA.

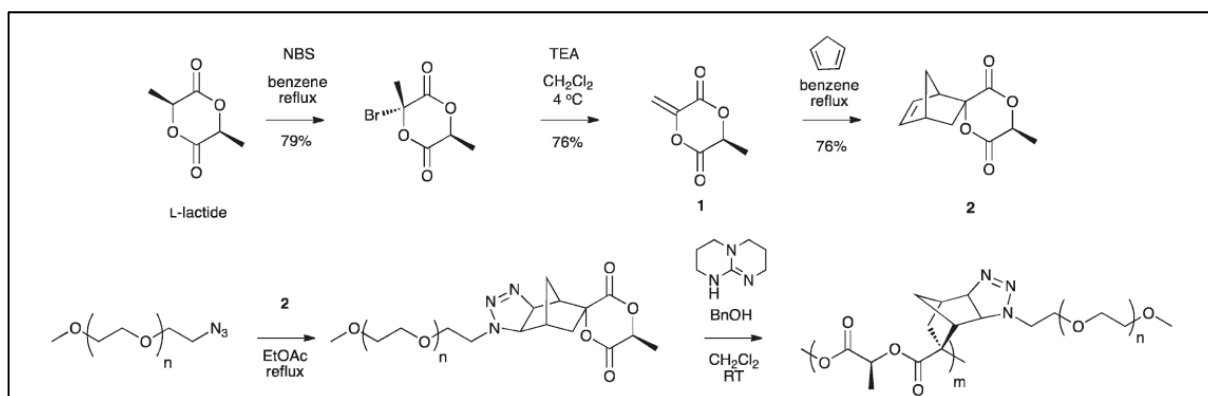


Figure 4. Reaction scheme for the preparation of PLA-g-PEG (from Castillo et al. [18], copyright American Chemical Society, reproduced with permission).

This limited number of examples illustrates that this approach based on functional-lactides is time-consuming, requires many steps and often gives low yields. For example, the global yields of the syntheses are 20% for dipropargyloxylactide [17] and 10% for PLA-g-Paclitaxel-PEG [16]. These copolymers are therefore expensive, and while this is not a fundamental problem for biomedical applications, it is a real drawback for environmental applications that use much larger amounts of product. Therefore, the second method, chemical modification of a preformed PLA chain, is the most widely used to obtain a functionalized PLA backbone allowing for the grafting of a second polymer.

2.2. Direct Functionalization of PLA Backbone: Towards PLA-Based Graft Copolymers

PLA is an aliphatic polyester known for being highly sensitive to chain breakings, especially in acid or alkaline environments. As a result, unlike poly ϵ -caprolactone, for which a general method of chain modification in anionic media is described [19], almost all substitution reactions on the PLA backbone are carried out under free radical conditions. In most cases, a functional small molecule is grafted on the PLA backbone to give it functionality and, in a second step, a polymer chain is grafted through this small molecule. This grafting can be carried out by polymerization of a monomer from this functional group (“grafting from”) or by the direct grafting of a polymer chain through its reactive chain end (“grafting onto”). From an experimental point of view, the functionalization is carried out in blenders or extruders in the presence of a radical precursor. Very frequently, the modification of the PLA chain aims to obtain a compatibilizing agent for blends of PLA and another polymer in order to improve the mechanical properties of the blends. Zeng et al. described the main basic strategies for the compatibilization of the PLA blends, among them functionalization of the PLA backbone with a reactive compound [20].

2.2.1. PLA-g-Maleic Anhydride (PLA-g-MA)

The most widely used reagent for functionalizing the PLA chain is maleic anhydride (MA) due to its good chemical reactivity, low toxicity and good stability to the experimental synthesis conditions [21–23]. The grafting of MA onto the PLA backbone results in a reactive compatibilizer due to the presence of the anhydride function. PLA graft copolymers are therefore obtained by a reaction of the anhydride group with some reactive functions of the blended polymer.

Functionalization with MA is typically carried out between 120 °C and 200 °C with stirring at 50–200 rpm in an extruder in the presence of a radical initiators, such as dicumyl peroxide (DCP) or benzyl peroxide (BPO). A typical reaction scheme is shown in Figure 5 [21]. The role of different reaction parameters (MA concentration, nature of the initiator, temperature, molar mass of PLA) on the percentage of grafting is also described [23]. It was found that the molecular weights of PLA decreased during the reaction due to chain scissions. The grafting percentage of low-molecular-weight PLA is greater than that of the high-molecular-weight PLA because of steric hindrance (Table 1). It should be noted that the grafting percentage of MA increased with the initial concentration of MA, but remained low (<1.25%) regardless of the different parameters of the reaction, which shows the low efficiency of these radical reactions [23]. If one wishes to graft at least two molecules of anhydride per PLA chain, the molar mass of the latter must be higher than 14,500 g.mole⁻¹ if substitution degree = 1%, which is not always the case. Nevertheless, the results obtained for the compatibility of various PLA-based blends are significant. Examples of variations in mechanical properties are shown in Table 2 in blends of PLA/cellulose nanofibers (CNF) [24].

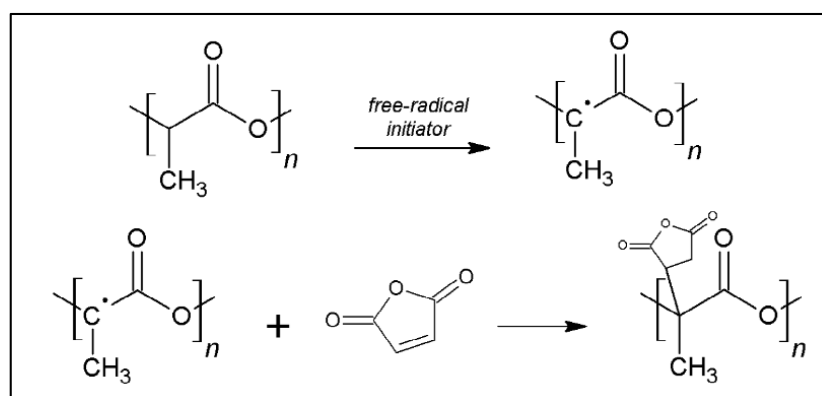


Figure 5. Reaction scheme for the grafting of MA on PLA (from González-López et al. [21], copyright Taylor and Francis, reproduced with permission).

Table 1. Variations in molecular weight and grafting percentage during functionalization of PLA by MA (extract of data from Muenprasat et al. [23]).

PLA Molecular Weight	PLA-g-MA Molecular Weight	Grafting %
294,000	196,000	0.65
92,000	76,000	1.25

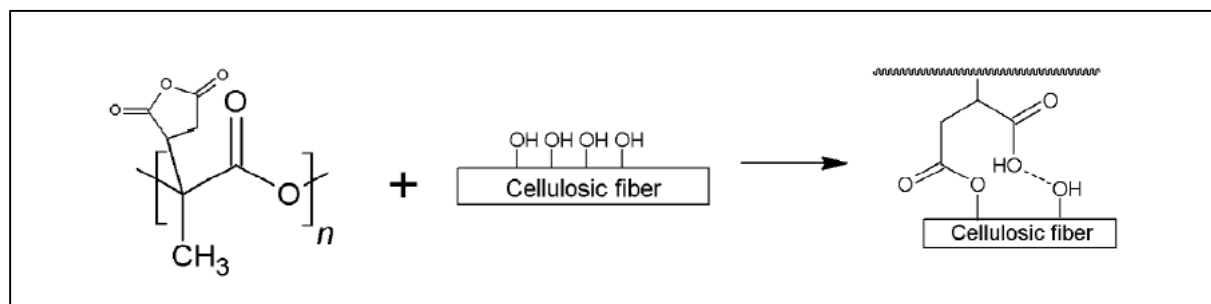
Table 2. Mechanical properties of PLA, PLA/CNF and PLA/CNF/PLA-g-MA (extract of data from Ghasemi et al. [24]).

	Tensile Strength (MPa)	Strain at Break (%)	Tensile Modulus (GPa)
Original PLA	22.4	2.3	1.1
PLA/CNF(5%)	34.8	3.0	1.3
PLA/CNF(5%)/PLA-g-MA (5%)	60.3	5.5	1.5

The following paragraphs show the main PLA graft copolymers obtained from PLA-g-MA with their principal properties and applications.

PLA-g-Cellulosic Derivatives

Cellulose fibers derived from renewable biomass have attracted interest as microscale reinforcements in composite materials. Natural fibers have many advantages—low density, low cost, renewability, biodegradability—that make them excellent candidates for the design of biodegradable materials. They can advantageously replace mineral reinforcements in PLA matrices [3,4]. However, a poor compatibility between the fiber and the polymer matrix leads to materials with poor performances. In particular, nanocelluloses, due to their polar surfaces, are difficult to uniformly disperse in a non-polar medium. The consequences of this poor interfacial compatibility between polymer and filler are poor properties of the final blend. The compatibilization of PLA/cellulosic derivatives blends to improve many of the blends' properties, especially mechanical properties, while maintaining a natural source, are the most widely described in the literature [24,25]. Because PLA-g-MA acts as a reactive compatibilizer, a PLA-g-cellulose copolymer is formed as a result of the reaction between the anhydride of PLA-g-MA, and alcohol functions of the cellulosic derivative (Figure 6) [21]. The presence of a very low percentage of PLA-g-MA (<1%) in the original blend significantly improved the properties of the blend [24]. Tensile strength, tensile modulus and strain at break were increased by 55.3%, 15.45% and 30.4%, respectively, over neat PLA by adding 5 wt.% of cellulose nanofibers (CNFs), and by 169.2%, 36.3% and 139.1%, respectively, by adding 5% of PLA-g-MA to the blend PLA/CNF.

**Figure 6.** Reaction scheme for the grafting of a cellulosic fiber on PLA-g-MA (from González-López et al. [21], copyright Taylor and Francis, reproduced with permission).

Many cellulosic derivatives were introduced into PLA matrices in the presence of PLA-g-MA to improve the mechanical properties of blends such as Luffa [26], flax [27], coffee grounds [28], wood flour or rice husk [29,30], sisal fibers [31], straw [32], bamboo fiber [33], cassava starch [34,35], starch [36], and lemongrass fiber [37]. For example, the use of PLA-g-MA in a PLA/cassava starch blend has a significant impact on elongation at break but not on Young's modulus or tensile strength. However, it was noted that PLA-g-MA with a higher proportion of grafted MA (0.52 wt.%) had a lower molecular weight and higher dispersity value, showing some degradation of the polymer backbone [34,38].

Many other properties are improved in PLA-g-MA compatible blends, such as morphological, rheological, thermal, tensile and moisture sorption properties as well as thermal degradation [39–41]. For example, Figure 7 shows SEM micrographs of PLA/TPS (thermoplastic starch) blends (70/30 *w/w*) without (Figure 7a) and with two parts per hundred rubber (phr) PLA-g-MA (Figure 7b), highlighting the compatibilization of the blend of PLA-g-starch formed in situ.

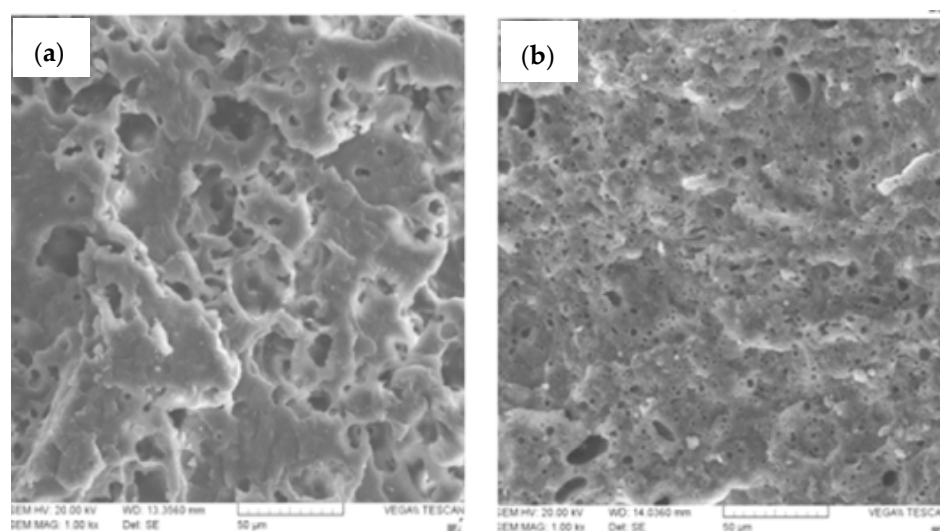


Figure 7. SEM micrographs of PLA/TPS blends (70/30 *w/w*) (a) without and (b) with 2 phr PLA-g-MA (adapted from Moghaddam et al. [39], copyright Springer Science, reproduced with permission).

To obtain a PLA-g-starch copolymer, another method is to react maleic anhydride with starch to obtain a maleated thermoplastic starch (MTPS), which is then mixed with PLA in the presence of Luperox 101 (2,5-bis(tert-butylperoxy)-2,5-dimethylhexane) in a Brabender at 180 °C for 5 min. The reaction scheme is shown in Figure 8 [42].

Direct grafting of cellulose nanocrystals (CNC) on PLA, without the addition of PLA-g-MA, is also described, following the reaction scheme of Figure 9 [43]. could his DCP was sprayed onto PLA beads, and the DCP-coated PLA pellets were mixed with CNC and extruded in a twin-screw extruder at 180 °C at 50 rpm for 5 min. The effective grafting of CNC onto PLA was identified by SEC, FTIR and NMR, but NMR showed a very low proportion of CNC in the copolymer. Some mechanical and structural properties were significantly impacted (increased Young modulus, decreased elongation, increased crystallinity).

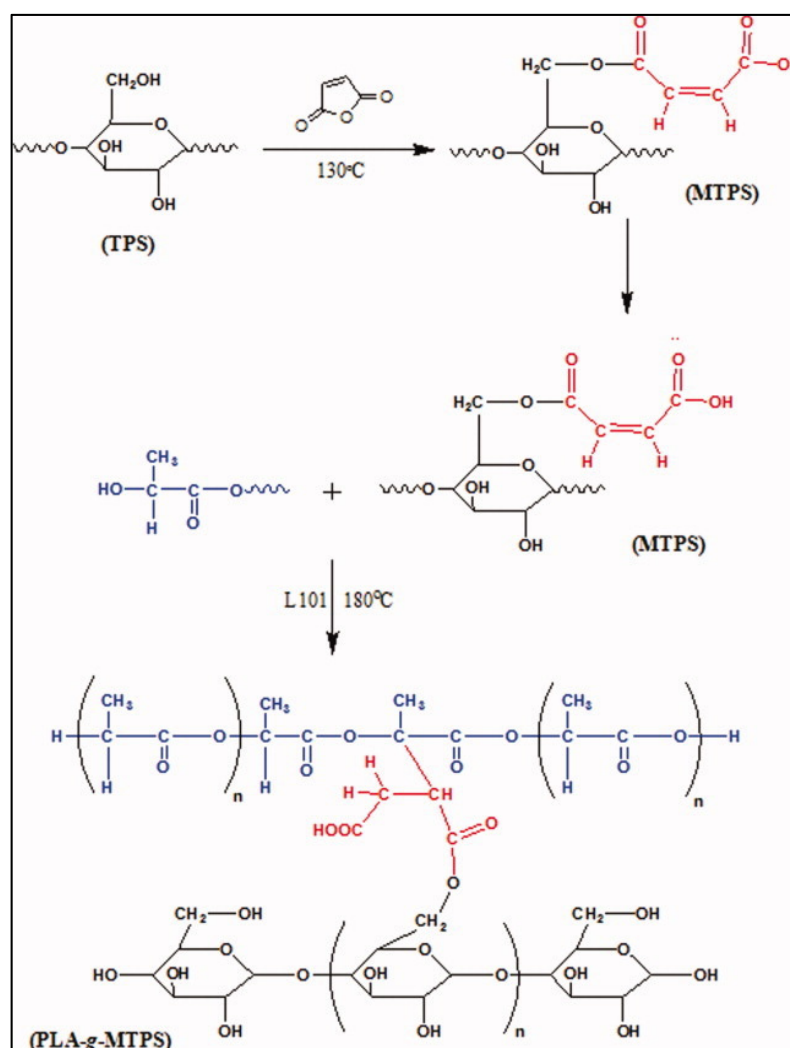


Figure 8. Reaction scheme of the MTPS formation and coupling to PLA (from Wootthikanokkhan et al. [42], copyright Wiley-VCH GmbH. Reproduced with permission).

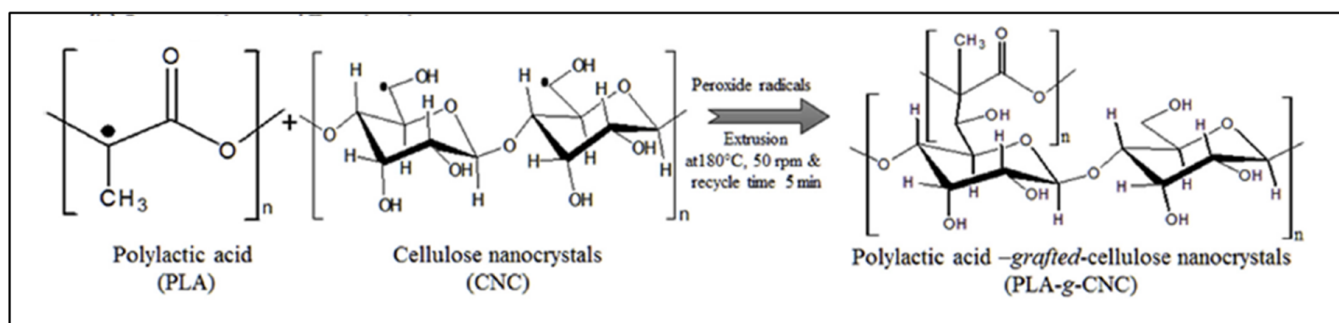


Figure 9. Reaction scheme for the synthesis of PLA-g-CNC (from Dhar et al. [43], copyright Elsevier, reproduced with permission).

PLA-g-Natural Rubber (PLA-g-NR)

Among the drawbacks of PLA materials, we can also highlight their fragility. Natural rubbers (NR), on the other hand, are highly flexible, environmentally friendly and derived from a renewable resource. They are good toughness agents due to their high molecular weight and very low glass transition temperature. However, due to the non-polarity of NRs, PLA/NR blends are immiscible and not compatible. To improve the interfacial

interaction between PLA and NR, the reactive compatibilizer PLA-g-MA is used to form a graft copolymer PLA-g-NR [44,45]. Typically, the compatibilized blend is made in a twin screw extruder at a temperature between 160 and 180 °C and a screw speed of around 30 rpm. With the addition of PLA-g-MA, the mechanical properties of the material were significantly improved. It was found that a 3% PLA-g-MA was the best compatibilizer composition to achieve the best performance of the material [44]. The reverse reaction of a maleic anhydride on NR (NR-MA), followed by reaction on PLA in a radical medium, was also performed with similar results regarding mechanical properties [46,47]. However, in this case, the proposed mechanism does not involve a reaction on the PLA backbone but only the alcohol chain end, which reacts on the backbone of NR-MA (Figure 10).

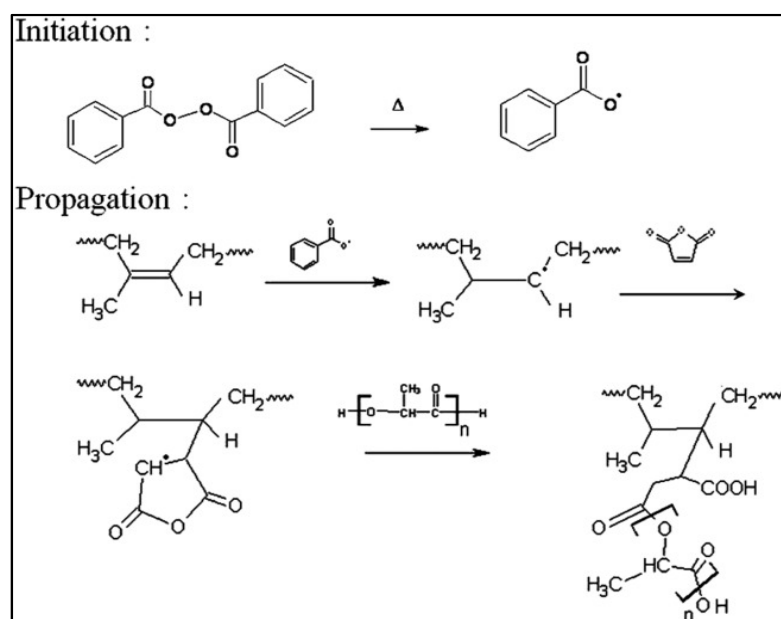


Figure 10. Proposed mechanism for the grafting of NR-MA on PLA (from Thepthawat et al. [47], copyright Wiley-VCH GmbH. Reproduced with permission).

PLA-g-Polyester

Other degradable and flexible polyesters are now being developed on an industrial scale, such as polybutylene adipate-co-terephthalate (PBAT), polybutylene succinate (PBS) or poly ϵ -caprolactone (PCL); the first two examples are derived from renewable resources. Blends of PLA with these polyesters are good candidates for improving the brittleness and toughness of PLA while maintaining the biodegradability of the blends. Unfortunately, these blends are largely incompatible, especially with PBAT, due to its structure, which contains aromatic rings [48]. As with PLA/NR blends, PLA-g-MA was used as a reactive compatibilizer whose possible reaction of the alcohol chain end of PBAT with the grafted anhydride is shown in Figure 11.

Typically, the reaction is carried out in a co-rotating twin screw extruder at a temperature between 160 and 180 °C and a screw speed of 25–100 rpm [49,50]. Effective grafting of PBAT was demonstrated by a drastic increase in the molecular mass of the copolymer, from 10 kDa to ca. 20 kDa. The mechanical properties of the PLA/PBAT blend were only slightly improved despite the incorporation of PLA-g-MA. However, the improvement of the interfacial adhesion between PLA and PBAT was evidenced by SEM micrographs. A very limited compatibility effect of the addition of PLA-g-MA in PLA/PBAT/TiO₂ blends was also observed, with TiO₂ acting as a nucleating agent [51]. The addition of CaCO₃ to PLA/PBAT/PLA-g-MA blends resulted in an increase in Young's modulus [52].

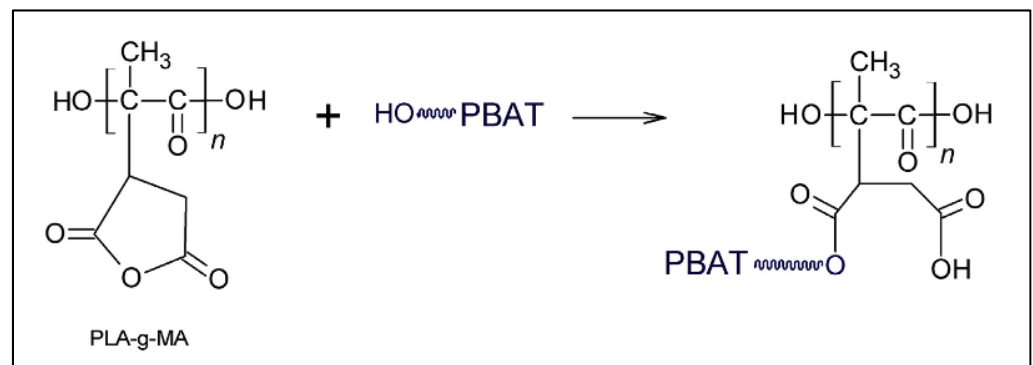


Figure 11. Possible reaction between PLA-g-MA and PBAT (from Rigolin et al. [50], copyright Elsevier, reproduced with permission).

Phetwarotai et al. studied PLA and PBS blends in the presence of PLA-g-MA or toluene diisocyanate (TDI) as compatibilizers [53]. They showed that TDI is a more effective compatibilizer than PLA-g-MA for PLA/PBS blend films, their failure mode changed from brittle to ductile due to the improved compatibility. The effect of PLA-g-MA was also studied on PLA/PBAT/thermoplastic starch (TPS) ternary blend films. The thermal stability, tensile properties and compatibility of the PLA, PBAT, and TPS blends were slightly improved with the addition of the compatibilizer [54].

In the case of PLA/PCL with non-compatible blends, a reaction of MA with PCL is more likely to occur between the anhydride and OH groups on the PCL chain ends. As in the case of PBAT, it is the terminal alcohol of the PCL that reacts with the grafted anhydride of the PLA chain (Figure 12A) [55]. According to the authors, the compatibility effect of PLA-g-MA was shown by SEM micrographs (Figure 12B) and by a significant increase in the elongation at break of the material, from 7% in PLA or in a mixture of PLA and PCL to 53% in a compatibilized blend.

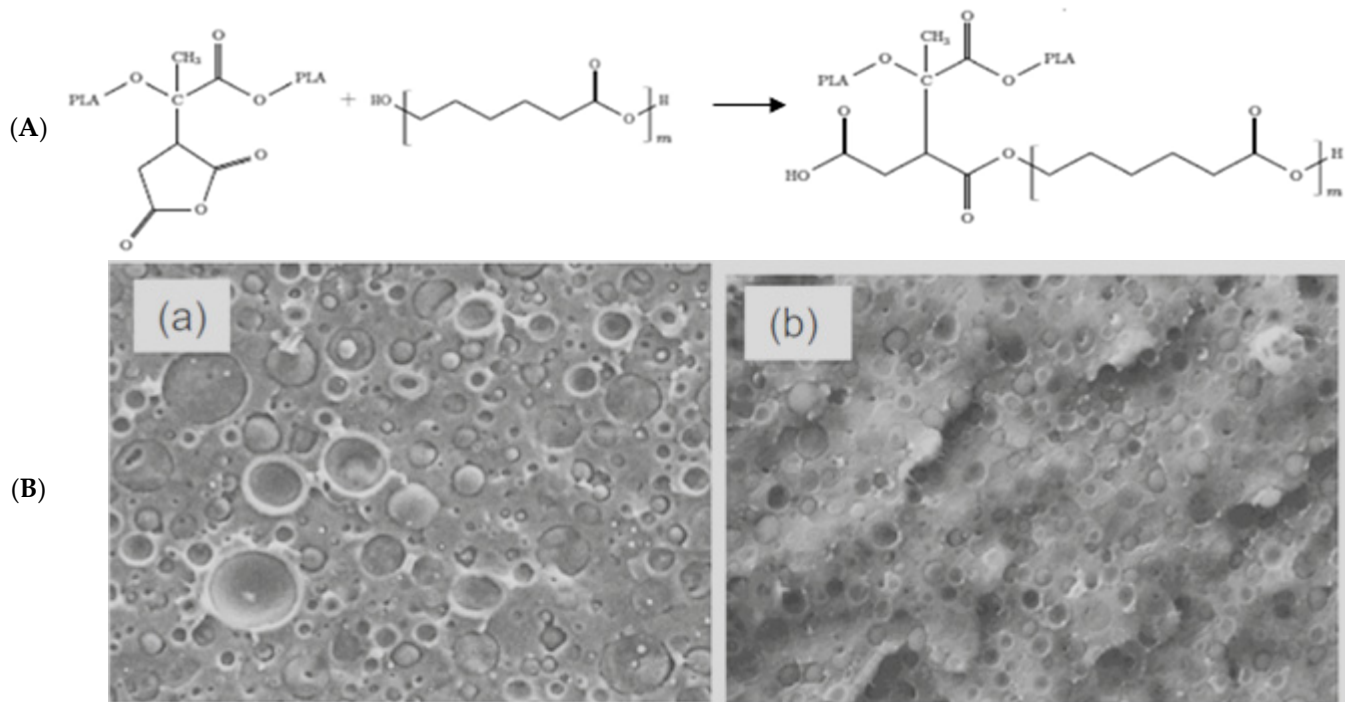


Figure 12. (A) Proposed reaction scheme between PLA-g-MA and PCL (B) SEM micrographs of PLA/PCL blends (a) without and (b) with 10% PLA-g-MA (adapted from Gardella et al. [55], copyright Springer, reproduced with permission).

By reactive extrusion of the bio-based poly(glycerol succinate-co-maleate) (PGSMA) with PLA at 150–180 °C in the presence of a free radical initiator, a PLA-g-PGSMA graft copolymer was obtained that acts as an interfacial compatibilizer due to the double bond of the maleate unit in PGSMA [56]. The tensile strength of PLA/PGSMA blends was improved by almost 400% compared to that of pure PLA. This increase was caused by (i) the in situ formation of PLA-g-PGSMA graft copolymers and (ii) the crosslinking of PGSMA within the PLA matrix, which act as interfacial compatibilizers. Two-dimensional NMR and FTIR confirmed the formation of PLA-g-PGSMA, but the substitution degree on the PLA backbone was not evaluated. It is important to note that this work was performed with very-low-molecular-weight PGSMA ($M_n < 1200$ Da).

PLA-g-MA is also used to compatibilize PLA with thermoplastic polyurethane elastomers (TPU) and thermoplastic polyester elastomers (TPE). Charpy impact, toughness and fracture toughness of brittle PLA were improved when the blends were compatibilized by addition of PLA-g-MA without adversely damaging effects on other mechanical and thermal properties of the PLA blends [57].

Other PLA-Based Blends

PLA-g-MA serves as reactive compatibilizer for other polymer blends by reacting the anhydride functions on the second constituent of the blend. Examples include polyamides 11 and 12, where anhydride function reacts in the amine groups [58,59]. The ductility and impact strength of the compatibilized blends were increased by a factor two compared to non-compatibilized blends. A crosslinking agent (trimethylolpropane trimethacrylate) was also used to enhance the impact strength of the PLA-g-MA-containing blend. PLA/Polyamide6 (PA6) blends were compatibilized with PLA-g-IA (IA = itaconic anhydride), a compound similar to PLA-g-MA [60]. It was reported that IA can react with amine and amide functions of PA6. Unfortunately, a weak compatibility effect was obtained, likely due to the low concentration of IA moieties grafted onto PLA backbone (0.4 wt.%). PLA-g-IA is also a compatibilizer of PLA/Novatein (a protein-based thermoplastic) as shown in the SEM micrographs of Figure 13 [61].

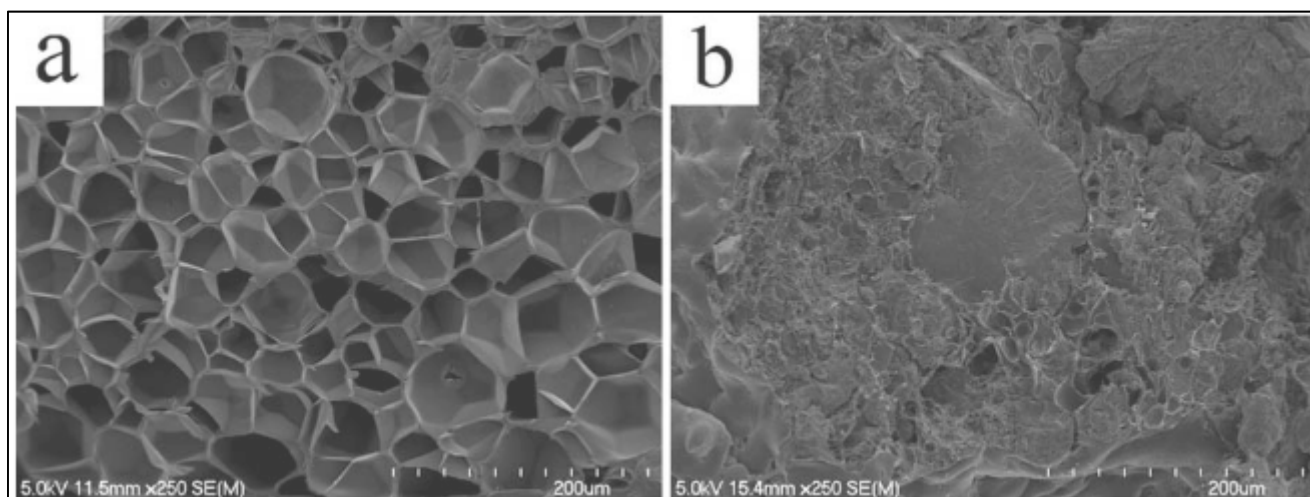


Figure 13. SEM micrographs of PLA/novatein 90/10 blends (a) uncompatibilized, (b) compatibilized (adapted from Walallavita et al. [61], copyright Wiley-VCH GmbH. Reproduced with permission).

Compatibilizing effects of PLA-g-MA on the properties of PLA/Soy Protein concentrate (SPC) blends were demonstrated by a 19% increase in tensile strength compared to the non-compatibilized blend [62]. Finally, PLA-g-MA also has the ability to provide some compatibility to PLA/mineral mixtures such as PLA/carbon nanotubes [22], PLA/Titanium oxide [63], PLA/halloysite [64], PLA/hydroxyapatite [65], PLA/talc [66], PLA polyhedral oligomeric silsesquioxane (POSS) [67].

2.2.2. PLA-g-Glycidyl Methacrylate (PLA-g-GMA)

A second type of compound that allows for the reactive functionalization of the PLA chain is glycidyl methacrylate (GMA). Grafting is a free-radical reaction performed in a mixer (80 rpm) at 160 °C for 12 min in the presence of BPO [68]. A proposed scheme of the reaction is shown in Figure 14 [69].

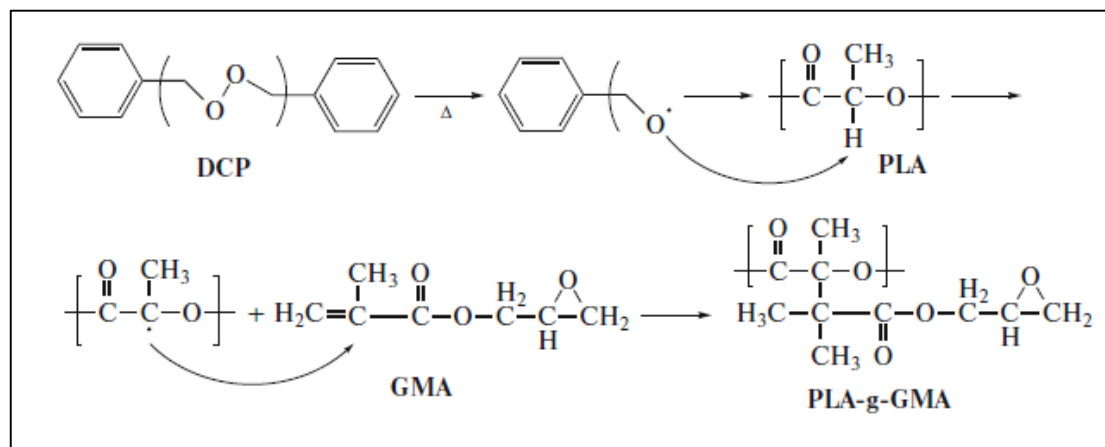


Figure 14. Reaction scheme for the grafting of GMA on PLA backbone (from Gu et al. [69], copyright Springer Nature, reproduced with permission).

The possibility of further functionalization is ensured by the presence of the new oxirane group on the grafted chain. As for PLA-g-MA, the main application lies in the compatibility of polymer blends. The graft content increased from 1.8 to 11.0 wt.% as the GMA concentration in the feed is varied from 5 to 20 wt.%. [68]. The degree of substitution, which is significantly higher than that of PLA-g-MA, is therefore the main advantage of GMA over MA. The characterization and properties of PLA-g-GMA (crystallization, characteristics, tensile stress, stress–strain curve, brittleness, thermal properties) compared to the one of PLA, are described by Kangwanwatthanasiri et al. [70].

The main graft copolymers obtained from PLA-g-GMA and their principal properties and applications are described in the following paragraphs. We found almost the same types of structures as those obtained with PLA-g-MA; therefore, they will not be described in detail.

PLA-g-Cellulosic Derivatives

PLA-g-GA is blended with cellulosic derivatives, fully renewable and degradable resources, to obtain a fully biodegradable product. For example, when used with starch, a small percentage of PLA-g-GMA plays the role of a compatibilizer, which is incorporated into both PLA and starch phases [68]. Essentially, when PLA-g-GMA is incorporated into PLA/cellulosic blends, the mechanical properties are improved: the starch tensile strength at break increased from 18.6 ± 3.8 to 29.3 ± 5.8 MPa, the tensile modulus from 510 ± 62 to 901 ± 62 MPa, and elongation at break from 1.8 ± 0.4 to $3.4 \pm 0.6\%$ [68].

Based on the reaction with PLA-g-GMA, the various PLA/cellulosic derivatives blends that were compatibilized are PLA–starch copolymers [68], PLA-treated arrowroot fiber [71], PLA–lignin [72,73] PLA–cassava pulp [74], PLA–cellulose [75], PLA–bamboo flour [76], PLA–rice straw fiber [77].

PLA-g-Polyesters

For the same reasons as described with MA, PLA/PBAT and PLA/PBS blends were compatibilized by the addition of PLA-g-GMA, with the main results of improved mechanical and thermal properties [69]. Specifically, the presence of PLA-g-GMA in a blend PLA/PBAT led to a decrease in crystallization rate, an increase in melt strength and viscos-

ity, an improvement of tensile strength, and elongation at break, which are dependent on the proportion of PLA-g-GMA [78]. In a typical operating procedure, PLA, PBS or PBAT and PLA-g-GMA were melt blended together in a twin-screw extruder at a rotational speed of 30 rpm for several minutes. The temperature was between 150 and 170 °C [79]. The PLA/PBAT/PLA-g-GMA blends were successfully printed by 3D printing. A reaction mechanism between PBAT and PLA-g-GMA is described in Figure 15 [78]. With 10 wt.% of compatibilizer, the viscosity of the PBAT/PLA blend increased, and there was no longer a crystalline region of PBAT, showing an improved compatibility of PLA and PBAT.

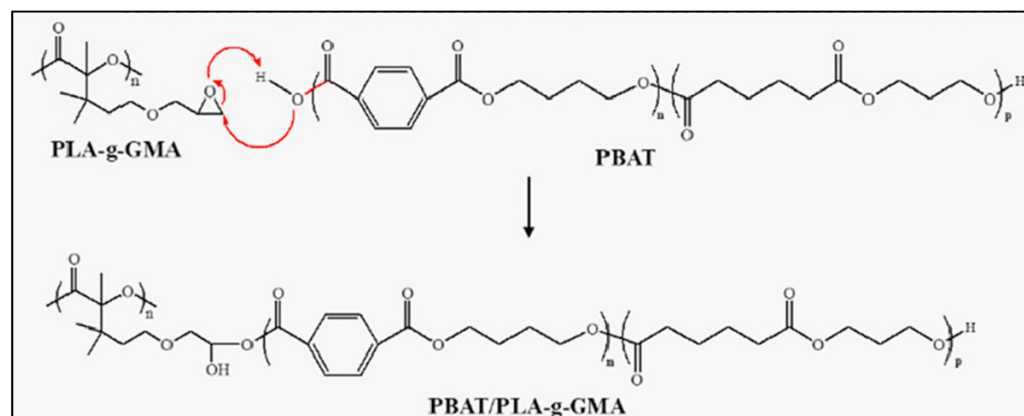


Figure 15. Mechanism of the reaction between PLA-g-GMA and PBAT (from Lyu et al. [78], copyright Elsevier, reproduced with permission).

PLA/cassava pulp/PBS ternary biocomposites were also compatibilized by PLA-g-GMA, with the mechanical properties of the PLA/cassava pulp/PBS composites being improved with the addition of PLA-g-GMA [80]. Similar to polyesters, PLA/thermoplastic polyurethane (TPU) blends were also compatibilized in the presence of PLA-g-GMA [81]. In this example, PLA-g-TPU acted as a compatibilizer for the blend PLA/TPU.

2.2.3. PLA-g-Acrylic Acid (PLA-g-AA)

Another functionalization of the PLA chain is used in the field of the compatibilization of PLA-based blends, namely the grafting of acrylic acid (AA) to give a PLA-g-AA graft copolymer. Typically, AA grafting is performed under free radical conditions, by adding a mixture of AA and BPO to molten PLA in a mixer at 95 °C for a period of 6 h [82]. A PLA-g-PAA copolymer is formed, which can then react with alcohol functions of the cellulosic derivatives by esterifying the alcohol functions of the cellulosic compound (Figure 16).

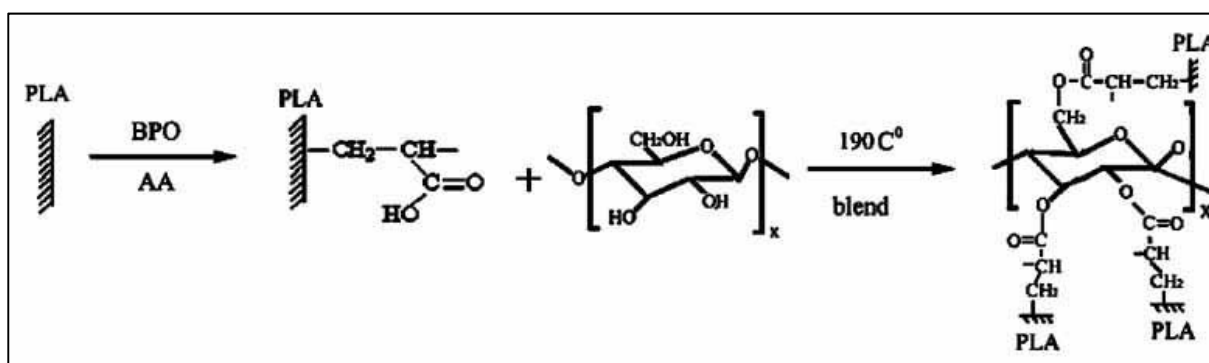


Figure 16. Reaction scheme for the grafting of acrylic acid on PLA and reaction with starch (from Wu, [82], copyright Wiley-VCH GmbH. Reproduced with permission).

As with PLA-g-MA, PLA-g-AA can compatibilize blends with natural cellulosic compounds, such as sisal fiber [31], wood flour [83], corn starch [84], rice husk [85], and hyaluronic acid [86]. In all cases, improvements in mechanical properties and/or biodegradation are obtained in the compatibilized mixtures. The compatibilization effect is shown by the size of the corn starch (CS) phase in PLA/CS and PLA/CS/PLA-g-corn starch. In a PLA/CS blend (50/50 *w/w*), the CS phase size decreased from 17.5 μm to 7.3 μm when PLA-g-corn starch was added in the blend [84].

Acrylic acid can also be graft-polymerized onto PLA chains in a solution using a photoinitiator, typically benzophenone, under UV irradiation at 254 nm [87]. Finally, the grafting of PAA onto the PLA backbone was also obtained by a free-radical reaction of BPO onto a solution of PLA in chloroform, followed by a reaction and polymerization of AA at 100 °C for 10 min under pressure. A drastic decrease in toughness and an increase in tensile modulus were observed in PLA-g-PAA as compared to PLA [88].

Inorganic–organic hybrid composites, based on mixtures of PLA and SiO_2 [89] and TiO_2 [90] generated via a sol–gel process, also showed improved mechanical and thermal properties when PLA was replaced by PLA-g-AA. This was attributed to stronger interfacial forces between carboxylic acid groups of PLA-g-AA and the residual Si-OH and Ti-OH groups [89].

2.2.4. PLA-g-Halogen

The halogenation, in particular bromination, of the PLA chain is another method for reactive functionalization of the PLA chain. Usually, bromination is achieved by a free-radical mechanism. Typically, PLA is treated with N-bromo succinimide (NBS) in the presence of BPO over a period of 5 days [91]. There is no detectable chain degradation or crosslinking based on SEC results. Similarly, authors prepared chlorinated and iodinated PLAs. They used short-chain PLA ($M_n = 2$ kDa) to facilitate polymer characterization. The substitution degree depended on the halogen: from 3.2% for bromination and chlorination to 0.5% for iodination. However, the degree of bromination can be increased to 8% with microwave activation.

PLA-g-Br was used as a multisite macroinitiator for the ATRP of methyl methacrylate (MMA) and oligo ethylene glycol methacrylate (OEGMA) (Figure 17). Depending on the PLA-g-Br/MMA ratio, the side chains had different lengths. Complete bromine consumption was achieved during polymerization [92].

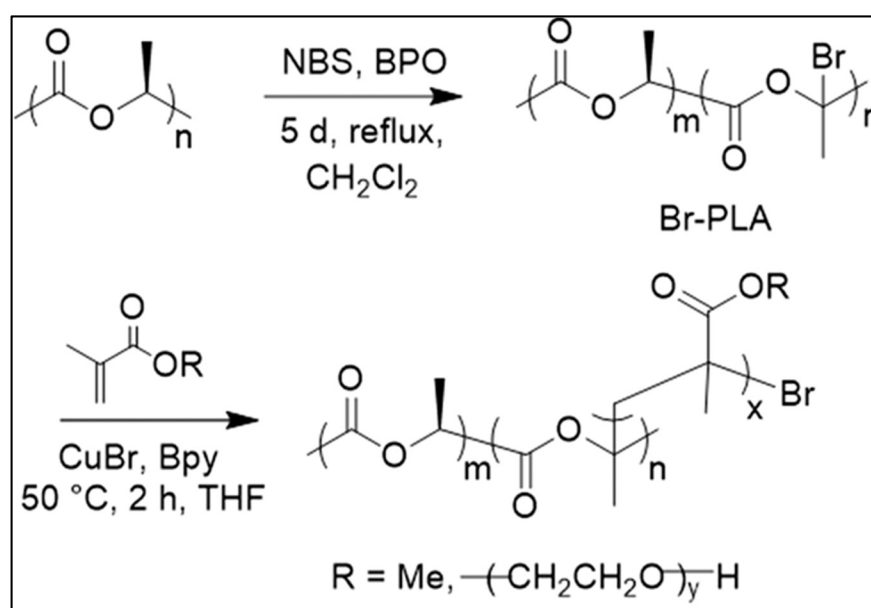


Figure 17. Formation of PLA-g-PMMA and PLA-g-POEGMA by ATRP (from Kalelkar et al. [92], copyright American Chemical Society, reproduced with permission).

The bromination reaction was also performed on the surface of PLA films by treating the surface with NBS in H₂O under UV irradiation. The incorporation of up to 3.7% bromine on the surface was achieved. Surface-initiated ATRP of quaternary ammonium methacrylate (QMA) chloride in the presence of CuBr and 2,2'-bipyridyl (bpy) was then performed, as shown in Figure 18. The cationic grafted surfaces are significantly more toxic to E.coli cells than genuine PLA, but no toxicity to HeLa cells upon contact was found [93].

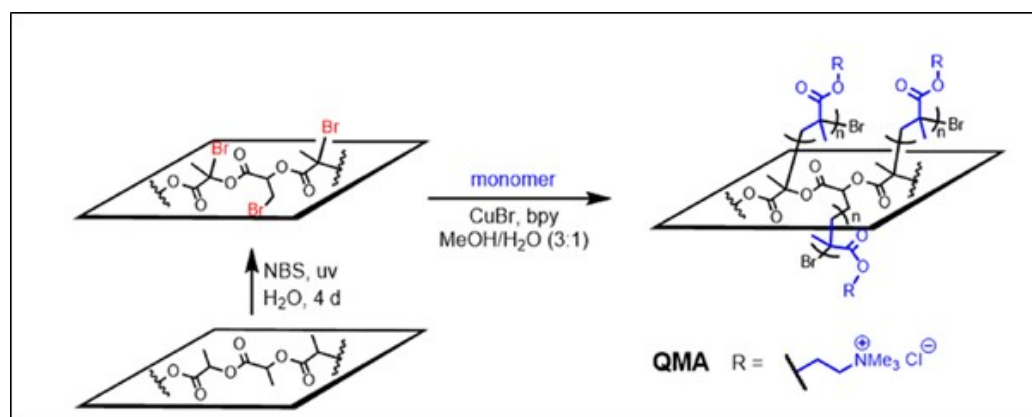


Figure 18. Surface-initiated ATRP of methacrylate monomers (from Kalelkar et al. [93], copyright Elsevier, reproduced with permission).

A direct surface grafting (without any pre-halogenation) of poly(methacrylic acid) (PMAA) onto PLA was obtained after activation of the surface of a PLA film via photo-oxidation followed by the UV-induced polymerization of methacrylic acid. The grafting was confirmed in particular by FTIR analysis [94]. This method was employed to prepare a nano hydroxyapatite/g-PLA composite.

PLA nanofibers obtained by electrospinning were coated with PMMA by plasma polymerization [95]. The coated PLA fibers showed an increase in diameter from 250 nm to 700 nm. MTT assays and cells count showed that the PLA-g-PMMA copolymers form intrinsically biocompatible systems.

2.2.5. Other PLA-Based Graft Copolymers

PLA-g-Nitrilotriacetic Acid (PLA-g-NTA)

In the field of “green packaging”, it is desirable to have non-migratory, metal-chelating and biodegradable materials. To this end, metal-chelated nitrilotriacetic acid (NTA) was grafted onto PLA using a classical radical mechanism, as shown in Figure 19 [96]. The grafting was evidenced by ATR-FTIR and XPS. Significant radical scavenging and metal-chelating efficacies as well as the ability to delay the degradation of ascorbic acid showed the antioxidant capacity of PLA-g-NTA. However, this NTA grafting was not followed by any polymer grafting, even if the grafted carboxylic acids are functional groups.

PLA-g-Vinyltrimethoxysilane (PLA-g-VTMS)

PLA-g-VTMS was prepared by a free radical reaction of vinyltrimethoxysilane (VTMS) on PLA in the presence of DCP in a Brabender at 190 °C for 5 min. The trimethoxysilane was then hydrolyzed to allow the crosslinking of the PLA chains to improve the mechanical properties of the PLA nanofibers (Figure 20) [97]. Electrospun nanofibrous mats based on PLA/NCC and PLA-g-silane/NCC nanocomposites were fabricated and compared. PLA-g-VTMS was used to improve the mechanical properties of PLA/nanocrystalline cellulose (NCC). In particular, the impact of NCC on improving tensile strength was notable, even though no chemical reaction of PLA-g-VTMS with NCC is reported. In addition, a cytotoxicity assessment showed the biocompatibility of the modified nanofibers, making them good candidates for tissue engineering applications.

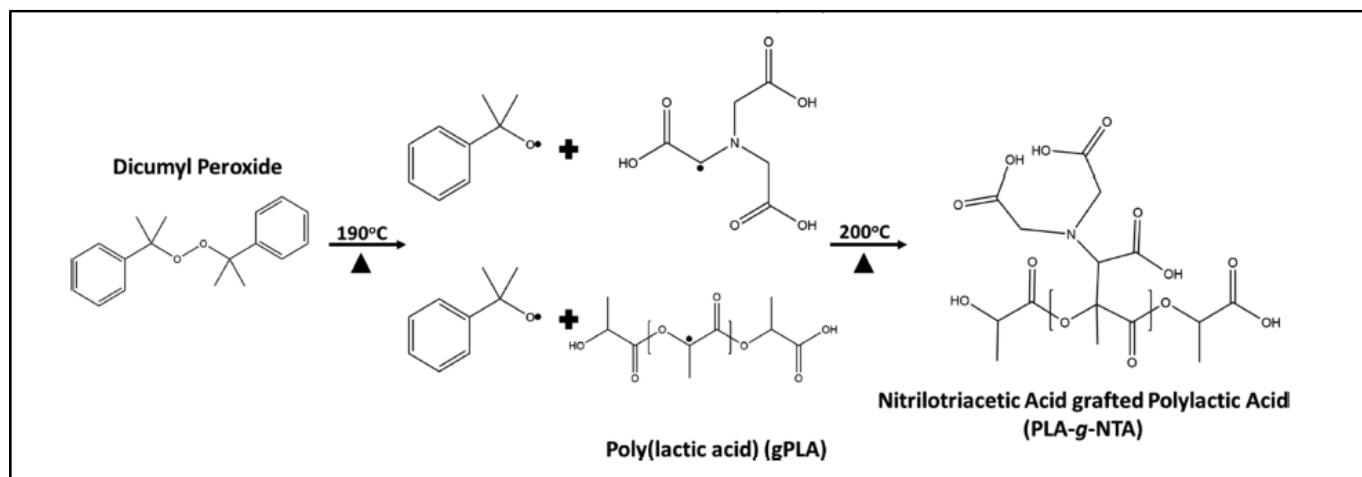


Figure 19. Reaction scheme for the grafting of NTA on PLA (from Herskovitz et al. [96], copyright American Chemical Society, reproduced with permission).

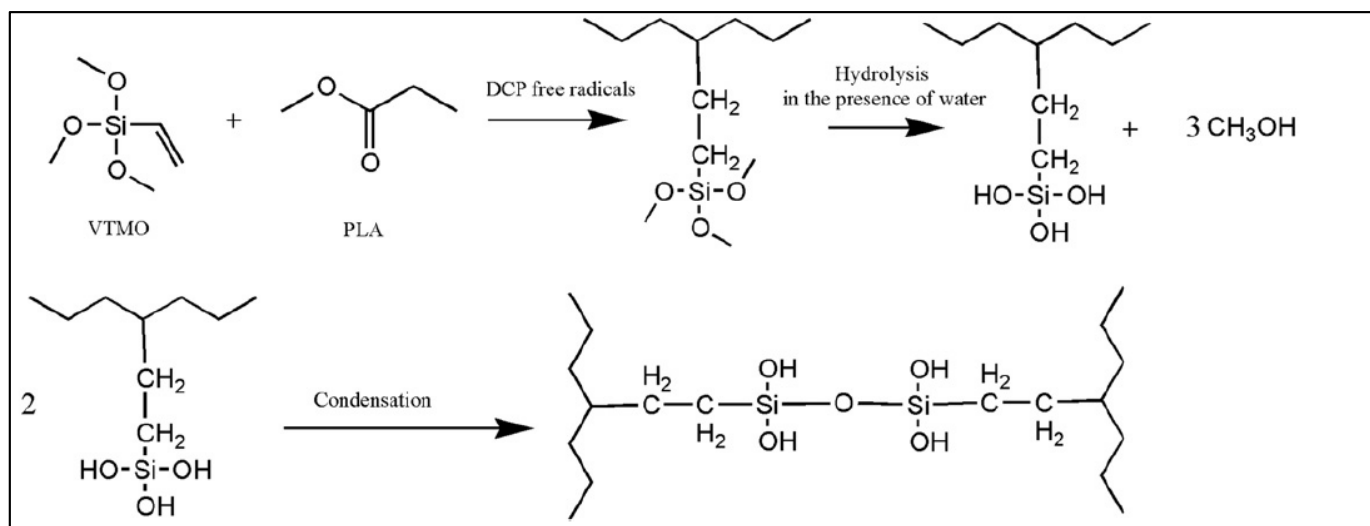


Figure 20. Synthesis scheme of PLA-g-VTMS, hydrolysis of methoxysilane, and crosslinking of PLA chains (adapted from Rahmat et al. [97], copyright Elsevier, reproduced with permission).

PLA-g-Poly(Vinyl Pyrrolidone) (PLA-g-PVP)

A PLA film was treated with a solution of N-vinyl pyrrolidone (NVP) in methanol and AgNO_3 using ^{60}Co γ -radiation polymerization at a dose of 1–30 kGy at room temperature. After washings, a PLA-g-PVP film was formed on the surface. Silver nanoparticles were also immobilized on the film surface. A surface grafting ratio, in the range of 25–49%, is assessed by the FTIR ratio of the bands at 1660 cm^{-1} of PVP and the sum of the bands at 1660 cm^{-1} and 1750 cm^{-1} of PLA [98]. There is no indication of the grafting degree of PVP onto the PLA backbone. It is noted, however, that PVP grafting significantly accelerated PLA degradation and does not impede cell proliferation [99]. Controlled variation in the grafting ratio could broaden the applications of this material in tissue engineering scaffolds, drug delivery, and the prevention of post-surgical adhesion.

2.2.6. Anionic Derivatization

The anionic derivatization of PCL was described by Ponsart et al. [19]. It is a remarkably powerful one-pot two-step method for grafting many types of substituents on the PCL backbone. This method is theoretically applicable to many polyesters, but it leads to varying degrees of chain cleavage depending on the nature of the polyester, due to

the anionic medium caused by the presence of lithium diisopropylamide. Even though PCL is relatively resistant to this basic medium, which is not the case with PLA, There are still many chain breakings. Nevertheless, El Habnoui et al. applied the method to the surface of the PLA film and nanofibers in a non-solvent medium that causes only moderate-chain scissions and allows for the preparation of functional PLA surfaces [100]. In particular, this approach was exploited with propargylated PLA allowing the grafting of bioactive polymers through CuAAC or thiol-yne click reactions. Therefore, anti-biofilm and bactericidal PLA surfaces were obtained by the reaction of α -azido QPDMAEMA (quaternized poly(2-(dimethylamino)ethyl methacrylate)) or thiol-functional polyaspartamide derivatives (Figure 21) [101,102].

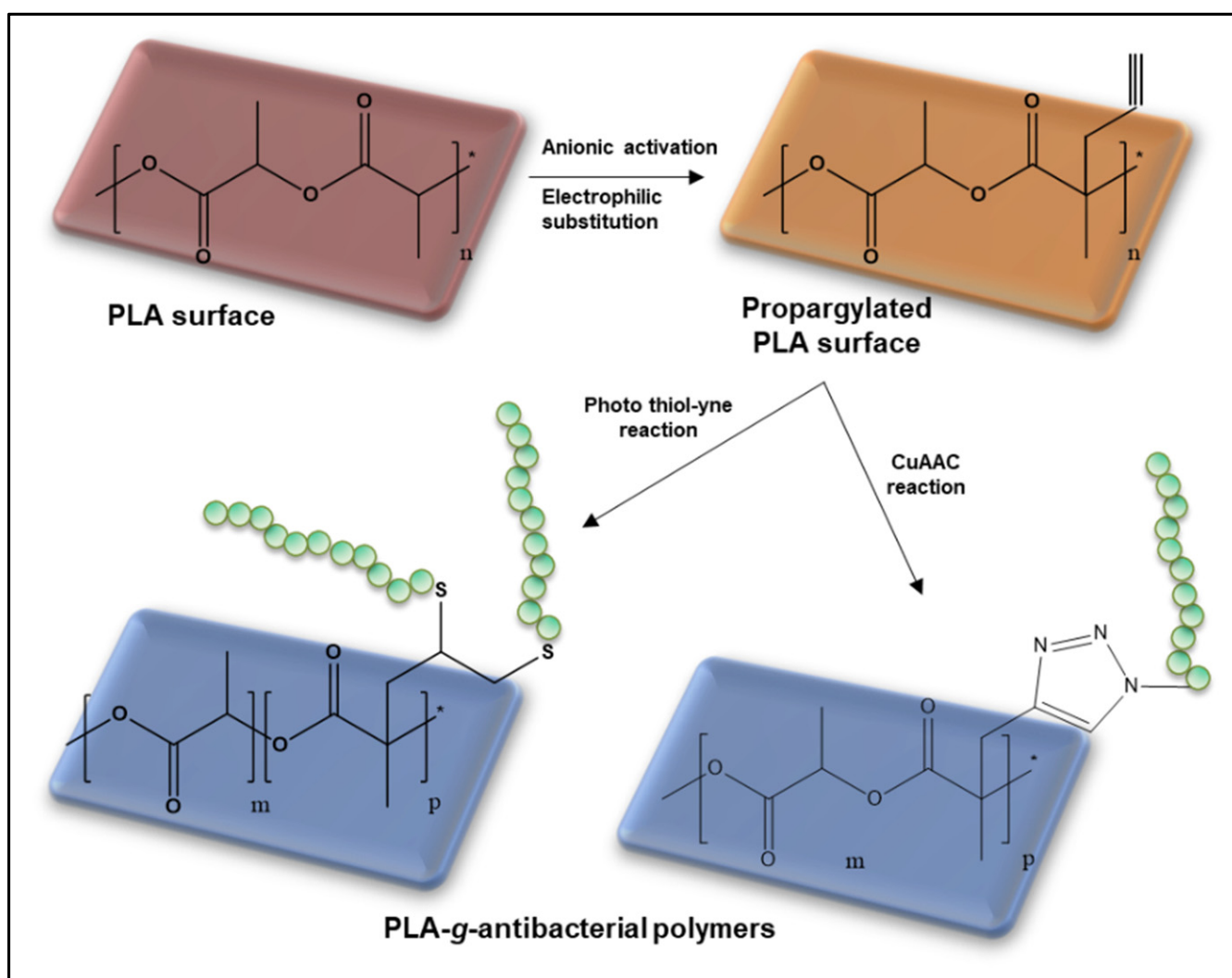


Figure 21. General synthesis scheme of PLA-g-antibacterial polymers from propargylated PLA surface (adapted from Sardo et al. [102] and El Habnoui et al. [101]).

The main copolymers grafted onto the PLA chain, precursors, copolymers and literature references are summarized in Table 3.

Table 3. Main PLA-based grafted copolymers according to literature.

Precursor: Functionalized PLA	PLA-g-Copolymer	Refs.
PLA-g-MA	cellulosic derivatives	[24,40,41]
	luffa	[26]
	flax	[27]
	coffee grounds	[103]
	wood flour	[29,30]
	rice husk	[29,30]
	sisal	[31]
	straw	[32]
	bamboo	[33]
	cassava	[34,35]
	starch	[36,39,42]
	lemongrass	[37]
	natural rubber	[44,45]
	polyesters	
	PBAT	[48–50]
	PBAT/TiO ₂	[51]
	PBAT/CaCO ₃	[52]
	PBAT/starch	[54]
	PBS	[53]
	PCL	[55]
PGSMA	[56]	
TPU	[57]	
PA	[58,59]	
soy protein	[62]	
mineral compounds	[22,63–67]	
PLA-g-IA	polyamide	[60,61]
PLA-g-GMA	cellulosic derivatives	
	starch	[68]
	arrowroot	[71]
	lignin	[72,73]
	cassava	[74]
	cellulose	[75]
	bamboo	[76]
	rice-straw	[77]
	polyesters	
	PBAT	[69,78,79]
PBAT/cassava	[80]	
TPU	[81]	
PLA-g-AA	cellulosic derivatives	
	starch	[82,84,90]
	sisal	[31]
	wood flour	[83]
	rice husk	[85]
	mineral compounds	[89]
hyaluronic acid	[86]	
PLA-g-halogen	PMMA and POEGMA	[92–94]
	PVP	[98,99]
PLA-g-alkyne	PEG	[17]
Direct grafting	cellulose nanocrystals	[43]
	natural rubber	[46,47]
	PMMA	[95]
Surface-anionic derivatization	QPDMAEMA	[101]
	α,β -poly(N-2-hydroxyethyl)-D,L-aspartamide	[102]

3. Conclusions

Research on the chemical modifications of the PLA backbone to yield PLA-g-polymer graft copolymers is scarce. These modifications mostly occur via a radical mechanism in the presence of a peroxide, leading to the covalent substitution of a reagent on the methine proton of the PLA chain. These reactions are essentially carried out in mass at high temperature in a mixer or an extruder. The main substituents are anhydride or epoxy groups that allow a reactive compatibilization of PLA-based polymer blends. The degree of substitution remains low (<2%) but allows for significant improvements in properties, mainly in mechanical properties. The reactions of the anhydride or epoxide functions grafted on the PLA chain with other polymers (cellulose derivatives, polyesters, polyamides, natural gums, PMMA) lead to the formation of numerous graft copolymers whose backbone is PLA. If these PLA-g-polymers are mostly described for the compatibilization of PLA-containing blends, it appears that the applications of these PLA-based grafted copolymers could cross over into biomedical and environmental fields, because they are intrinsically biocompatible systems. In any case, the low degree of grafting obtained in these grafting reactions highlights the importance of finding new grafting approaches to develop functionalization on the PLA chain in order to obtain new PLA-based graft copolymers.

Author Contributions: Conceptualization, J.C. and B.N.; Writing—original draft preparation: J.C.; Writing & review, J.M. and H.V.D.B.; Validation: X.G., H.V.D.B., B.N. and J.C. All authors have read and agreed to the published version of the manuscript.

Funding: This research received no external funding.

Institutional Review Board Statement: Not applicable.

Informed Consent Statement: Not applicable.

Data Availability Statement: Not applicable.

Conflicts of Interest: The authors declare no conflict of interest.

References

1. Farah, S.; Anderson, D.G.; Langer, R. Physical and Mechanical Properties of PLA, and Their Functions in Widespread Applications—A Comprehensive Review. *Adv. Drug Deliv. Rev.* **2016**, *107*, 367–392. [[CrossRef](#)] [[PubMed](#)]
2. Naser, A.Z.; Deiab, I.; Defersha, F.; Yang, S. Expanding Poly(Lactic Acid) (PLA) and Polyhydroxyalkanoates (PHAs) Applications: A Review on Modifications and Effects. *Polymers* **2021**, *13*, 4271. [[CrossRef](#)] [[PubMed](#)]
3. Zhao, X.; Hu, H.; Wang, X.; Yu, X.; Zhou, W.; Peng, S. Super Tough Poly(Lactic Acid) Blends: A Comprehensive Review. *RSC Adv.* **2020**, *10*, 13316–13368. [[CrossRef](#)]
4. Alhanish, A.; Abu Ghali, M. Developments of Biobased Plasticizers for Compostable Polymers in the Green Packaging Applications: A Review. *Biotechnol. Prog.* **2021**, *37*, e3210. [[CrossRef](#)] [[PubMed](#)]
5. Muthuraj, R.; Misra, M.; Mohanty, A.K. Biodegradable Compatibilized Polymer Blends for Packaging Applications: A Literature Review. *J. Appl. Polym. Sci.* **2018**, *135*, 45726. [[CrossRef](#)]
6. Anderson, K.S.; Schreck, K.M.; Hillmyer, M.A. Toughening Polylactide. *Polym. Rev.* **2008**, *48*, 85–108. [[CrossRef](#)]
7. Oh, J.K. Polylactide (PLA)-Based Amphiphilic Block Copolymers: Synthesis, Self-Assembly, and Biomedical Applications. *Soft Matter* **2011**, *7*, 5096. [[CrossRef](#)]
8. Stefaniak, K.; Masek, A. Green Copolymers Based on Poly(Lactic Acid)—Short Review. *Materials* **2021**, *14*, 5254. [[CrossRef](#)]
9. Bawa, K.K.; Oh, J.K. Stimulus-Responsive Degradable Polylactide-Based Block Copolymer Nanoassemblies for Controlled/Enhanced Drug Delivery. *Mol. Pharm.* **2017**, *14*, 2460–2474. [[CrossRef](#)]
10. Nouvel, C.; Dubois, P.; Dellacherie, E.; Six, J.-L. Controlled Synthesis of Amphiphilic Biodegradable Polylactide-Grafted Dextran Copolymers. *J. Polym. Sci. Part Polym. Chem.* **2004**, *42*, 2577–2588. [[CrossRef](#)]
11. Yin, M.; Baker, G.L. Preparation and Characterization of Substituted Polylactides. *Macromolecules* **1999**, *32*, 7711–7718. [[CrossRef](#)]
12. He, J.; Wang, W.; Zhou, H.; She, P.; Zhang, P.; Cao, Y.; Zhang, X. A Novel PH-Sensitive Polymeric Prodrug Was Prepared by SPAAC Click Chemistry for Intracellular Delivery of Doxorubicin and Evaluation of Its Anti-Cancer Activity in Vitro. *J. Drug Deliv. Sci. Technol.* **2019**, *53*, 101130. [[CrossRef](#)]
13. Trimaille, T.; Gurny, R.; Möller, M. Synthesis and Properties of Novel Poly(Hexyl-Substituted Lactides) for Pharmaceutical Applications. *CHIMIA* **2005**, *59*, 348. [[CrossRef](#)]
14. du Boullay, O.T.; Saffon, N.; Diehl, J.-P.; Martin-Vaca, B.; Bourissou, D. Organo-Catalyzed Ring Opening Polymerization of a 1,4-Dioxane-2,5-Dione Deriving from Glutamic Acid. *Biomacromolecules* **2010**, *11*, 1921–1929. [[CrossRef](#)] [[PubMed](#)]

15. Pound-Lana, G.; Rabanel, J.-M.; Hildgen, P.; Mosqueira, V.C.F. Functional Polylactide via Ring-Opening Copolymerisation with Allyl, Benzyl and Propargyl Glycidyl Ethers. *Eur. Polym. J.* **2017**, *90*, 344–353. [[CrossRef](#)]
16. Yu, Y.; Zou, J.; Yu, L.; Ji, W.; Li, Y.; Law, W.-C.; Cheng, C. Functional Polylactide-*g*-Paclitaxel-Poly(Ethylene Glycol) by Azide-Alkyne Click Chemistry. *Macromolecules* **2011**, *44*, 4793–4800. [[CrossRef](#)]
17. Zhang, Q.; Ren, H.; Baker, G.L. Synthesis and Click Chemistry of a New Class of Biodegradable Polylactide towards Tunable Thermo-Responsive Biomaterials. *Polym. Chem.* **2015**, *6*, 1275–1285. [[CrossRef](#)] [[PubMed](#)]
18. Castillo, J.A.; Borchmann, D.E.; Cheng, A.Y.; Wang, Y.; Hu, C.; García, A.J.; Weck, M. Well-Defined Poly(Lactic Acid)s Containing Poly(Ethylene Glycol) Side Chains. *Macromolecules* **2012**, *45*, 62–69. [[CrossRef](#)]
19. Ponsart, S.; Coudane, J.; Vert, M. A Novel Route to Poly(ϵ -Caprolactone)-Based Copolymers via Anionic Derivatization. *Biomacromolecules* **2000**, *1*, 275–281. [[CrossRef](#)]
20. Zeng, J.-B.; Li, K.-A.; Du, A.-K. Compatibilization Strategies in Poly(Lactic Acid)-Based Blends. *RSC Adv.* **2015**, *5*, 32546–32565. [[CrossRef](#)]
21. González-López, M.E.; Robledo-Ortíz, J.R.; Manríquez-González, R.; Silva-Guzmán, J.A.; Pérez-Fonseca, A.A. Polylactic Acid Functionalization with Maleic Anhydride and Its Use as Coupling Agent in Natural Fiber Biocomposites: A Review. *Compos. Interfaces* **2018**, *25*, 515–538. [[CrossRef](#)]
22. Verginio, G.E.A.; Montanheiro, T.L.d.A.; Montagna, L.S.; Marini, J.; Passador, F.R. Effectiveness of the Preparation of Maleic Anhydride Grafted Poly(lactic Acid) by Reactive Processing for Poly(lactic Acid)/Carbon Nanotubes Nanocomposites. *J. Appl. Polym. Sci.* **2021**, *138*, 50087. [[CrossRef](#)]
23. Muenprasat, D.; Suttireungwong, S.; Tongpin, C. Functionalization of Poly(Lactic Acid) with Maleic Anhydride for Biomedical Application. *J. Met. Mater. Miner.* **2010**, *20*, 189–192.
24. Ghasemi, S.; Behrooz, R.; Ghasemi, I. Investigating the Properties of Maleated Poly(Lactic Acid) and Its Effect on Poly(Lactic Acid)/Cellulose Nanofiber Composites. *J. Polym. Eng.* **2018**, *38*, 391–398. [[CrossRef](#)]
25. Wang, H.-M.; Chou, Y.-T.; Wu, C.-S.; Yeh, J.-T. Polyester/Cellulose Acetate Composites: Preparation, Characterization and Biocompatible. *J. Appl. Polym. Sci.* **2012**, *126*, E242–E251. [[CrossRef](#)]
26. Rahem, Z.; Mayouf, I.; Guessoum, M.; Delaite, C.; Douibi, A.; Lallam, A. Compatibilization of Biocomposites Based on Sponge-Gourd Natural Fiber Reinforced Poly(Lactic Acid). *Polym. Compos.* **2019**, *40*, 4489–4499. [[CrossRef](#)]
27. Mihai, M.; Ton-That, M.-T. Novel Bio-Nanocomposite Hybrids Made from Polylactide/Nanoclay Nanocomposites and Short Flax Fibers. *J. Thermoplast. Compos. Mater.* **2019**, *32*, 3–28. [[CrossRef](#)]
28. Wu, C.-S. Renewable Resource-Based Green Composites of Surface-Treated Spent Coffee Grounds and Polylactide: Characterisation and Biodegradability. *Polym. Degrad. Stab.* **2015**, *121*, 51–59. [[CrossRef](#)]
29. Tsou, C.-H.; Hung, W.-S.; Wu, C.-S.; Chen, J.-C.; Huang, C.-Y.; Chiu, S.-H.; Tsou, C.-Y.; Yao, W.-H.; Lin, S.-M.; Chu, C.-K.; et al. New Composition of Maleic-Anhydride-Grafted Poly(Lactic Acid)/Rice Husk with Methylenediphenyl Diisocyanate. *Mater. Sci.* **2014**, *20*, 446–451. [[CrossRef](#)]
30. Tsou, C.-Y.; Wu, C.-L.; Tsou, C.-H.; Chiu, S.-H.; Suen, M.-C.; Hung, W.-S. Biodegradable Composition of Poly(Lactic Acid) from Renewable Wood Flour. *Polym. Sci. Ser. B* **2015**, *57*, 473–480. [[CrossRef](#)]
31. Wu, C.-S. Preparation, Characterization, and Biodegradability of Renewable Resource-Based Composites from Recycled Polylactide Bioplastic and Sisal Fibers. *J. Appl. Polym. Sci.* **2012**, *123*, 347–355. [[CrossRef](#)]
32. Mihai, M.; Ton-That, M.-T. Novel Polylactide/Triticale Straw Biocomposites: Processing, Formulation, and Properties. *Polym. Eng. Sci.* **2014**, *54*, 446–458. [[CrossRef](#)]
33. Rigolin, T.R.; Takahashi, M.C.; Kondo, D.L.; Bettini, S.H.P. Compatibilizer Acidity in Coir-Reinforced PLA Composites: Matrix Degradation and Composite Properties. *J. Polym. Environ.* **2019**, *27*, 1096–1104. [[CrossRef](#)]
34. Detyothin, S.; Selke, S.E.M.; Narayan, R.; Rubino, M.; Auras, R.A. Effects of Molecular Weight and Grafted Maleic Anhydride of Functionalized Polylactic Acid Used in Reactive Compatibilized Binary and Ternary Blends of Polylactic Acid and Thermoplastic Cassava Starch. *J. Appl. Polym. Sci.* **2015**, *132*. [[CrossRef](#)]
35. Bher, A.; Uysal Unalan, I.; Auras, R.; Rubino, M.; Schvezov, C. Toughening of Poly(Lactic Acid) and Thermoplastic Cassava Starch Reactive Blends Using Graphene Nanoplatelets. *Polymers* **2018**, *10*, 95. [[CrossRef](#)] [[PubMed](#)]
36. Orozco, V.H.; Brostow, W.; Chonkaew, W.; López, B.L. Preparation and Characterization of Poly(Lactic Acid)-*g*-Maleic Anhydride + Starch Blends. *Macromol. Symp.* **2009**, *277*, 69–80. [[CrossRef](#)]
37. Jing, H.; He, H.; Liu, H.; Huang, B.; Zhang, C. Study on Properties of Polylactic Acid/Lemongrass Fiber Biocomposites Prepared by Fused Deposition Modeling. *Polym. Compos.* **2021**, *42*, 973–986. [[CrossRef](#)]
38. Detyothin, S.; Selke, S.E.M.; Narayan, R.; Rubino, M.; Auras, R. Reactive Functionalization of Poly(Lactic Acid), PLA: Effects of the Reactive Modifier, Initiator and Processing Conditions on the Final Grafted Maleic Anhydride Content and Molecular Weight of PLA. *Polym. Degrad. Stab.* **2013**, *98*, 2697–2708. [[CrossRef](#)]
39. Moghaddam, M.R.A.; Razavi, S.M.A.; Jahani, Y. Effects of Compatibilizer and Thermoplastic Starch (TPS) Concentration on Morphological, Rheological, Tensile, Thermal and Moisture Sorption Properties of Plasticized Polylactic Acid/TPS Blends. *J. Polym. Environ.* **2018**, *26*, 3202–3215. [[CrossRef](#)]
40. Aouat, T.; Kaci, M.; Devaux, E.; Campagne, C.; Cayla, A.; Dumazert, L.; Lopez-Cuesta, J.-M. Morphological, Mechanical, and Thermal Characterization of Poly(Lactic Acid)/Cellulose Multifilament Fibers Prepared by Melt Spinning. *Adv. Polym. Technol.* **2018**, *37*, 1193–1205. [[CrossRef](#)]

41. Aouat, T.; Kaci, M.; Lopez-Cuesta, J.-M.; Devaux, E. Investigation on the Durability of PLA Bionanocomposite Fibers Under Hygrothermal Conditions. *Front. Mater.* **2019**, *6*, 323. [\[CrossRef\]](#)
42. Wootthikanokkhan, J.; Kasemwananimit, P.; Sombatsompop, N.; Kositchaiyong, A.; Isarankura na Ayutthaya, S.; Kaabbuathong, N. Preparation of Modified Starch-Grafted Poly(Lactic Acid) and a Study on Compatibilizing Efficacy of the Copolymers in Poly(Lactic Acid)/Thermoplastic Starch Blends. *J. Appl. Polym. Sci.* **2012**, *126*, E389–E396. [\[CrossRef\]](#)
43. Dhar, P.; Tarafder, D.; Kumar, A.; Katiyar, V. Thermally Recyclable Polylactic Acid/Cellulose Nanocrystal Films through Reactive Extrusion Process. *Polymer* **2016**, *87*, 268–282. [\[CrossRef\]](#)
44. Mohammad, N.N.B.; Arsad, A.; Rahmat, A.R.; Talib, M.S.; Mad Desa, M.S.Z. Influence of Compatibilizer on Mechanical Properties of Polylactic Acid/Natural Rubber Blends. *Appl. Mech. Mater.* **2014**, *554*, 81–85. [\[CrossRef\]](#)
45. Ruf, M.F.H.M.; Ahmad, S.; Chen, R.S.; Shahdan, D.; Zailan, F.D. *Tensile and Morphology Properties of PLA/LNR Blends Modified with Maleic Anhydride Grafted-Polylactic Acid and -Natural Rubber*; AIP Publishing LLC: Selangor, Malaysia, 2018; p. 020015. [\[CrossRef\]](#)
46. Abdullah Sani, N.S.; Arsad, A.; Rahmat, A.R. Synthesis of a Compatibilizer and the Effects of Monomer Concentrations. *Appl. Mech. Mater.* **2014**, *554*, 96–100. [\[CrossRef\]](#)
47. Thepthawat, A.; Srikulkit, K. Improving the Properties of Polylactic Acid by Blending with Low Molecular Weight Polylactic Acid-g-Natural Rubber. *Polym. Eng. Sci.* **2014**, *54*, 2770–2776. [\[CrossRef\]](#)
48. Jiang, L.; Wolcott, M.P.; Zhang, J. Study of Biodegradable Polylactide/Poly(Butylene Adipate-Co-Terephthalate) Blends. *Biomacromolecules* **2006**, *7*, 199–207. [\[CrossRef\]](#)
49. Teamsinsungvon, A.; Jarapanyacheep, R.; Ruksakulpiwat, Y.; Jarukumjorn, K. Melt Processing of Maleic Anhydride Grafted Poly(Lactic Acid) and Its Compatibilizing Effect on Poly(Lactic Acid)/Poly(Butylene Adipate-Co-Terephthalate) Blend and Their Composite. *Polym. Sci. Ser. A* **2017**, *59*, 384–396. [\[CrossRef\]](#)
50. Rigolin, T.R.; Costa, L.C.; Chinelatto, M.A.; Muñoz, P.A.R.; Bettini, S.H.P. Chemical Modification of Poly(Lactic Acid) and Its Use as Matrix in Poly(Lactic Acid) Poly(Butylene Adipate-Co-Terephthalate) Blends. *Polym. Test.* **2017**, *63*, 542–549. [\[CrossRef\]](#)
51. Phetwarotai, W.; Tanrattanakul, V.; Phusunti, N. Synergistic Effect of Nucleation and Compatibilization on the Polylactide and Poly(Butylene Adipate-Co-Terephthalate) Blend Films. *Chin. J. Polym. Sci.* **2016**, *34*, 1129–1140. [\[CrossRef\]](#)
52. Teamsinsungvon, A.; Ruksakulpiwat, Y.; Jarukumjorn, K. Properties of Biodegradable Poly(Lactic Acid)/Poly(Butylene Adipate-Co-Terephthalate)/Calcium Carbonate Composites. *Adv. Mater. Res.* **2010**, *123–125*, 193–196. [\[CrossRef\]](#)
53. Phetwarotai, W.; Maneechot, H.; Kalkornsurapranee, E.; Phusunti, N. Thermal Behaviors and Characteristics of Polylactide/Poly(Butylene Succinate) Blend Films via Reactive Compatibilization and Plasticization. *Polym. Adv. Technol.* **2018**, *29*, 2121–2133. [\[CrossRef\]](#)
54. Phetwarotai, W.; Aht-Ong, D. Characterization and Properties of Nucleated Polylactide, Poly(Butylene Adipate-Co-Terephthalate), and Thermoplastic Starch Ternary Blend Films: Effects of Compatibilizer and Starch. *Adv. Mater. Res.* **2013**, *747*, 673–677. [\[CrossRef\]](#)
55. Gardella, L.; Calabrese, M.; Monticelli, O. PLA Maleation: An Easy and Effective Method to Modify the Properties of PLA/PCL Immiscible Blends. *Colloid Polym. Sci.* **2014**, *292*, 2391–2398. [\[CrossRef\]](#)
56. Valerio, O.; Pin, J.M.; Misra, M.; Mohanty, A.K. Synthesis of Glycerol-Based Biopolyesters as Toughness Enhancers for Polylactic Acid Bioplastic through Reactive Extrusion. *ACS Omega* **2016**, *1*, 1284–1295. [\[CrossRef\]](#)
57. Kaynak, C.; Meyva, Y. Use of Maleic Anhydride Compatibilization to Improve Toughness and Other Properties of Polylactide Blended with Thermoplastic Elastomers. *Polym. Adv. Technol.* **2014**, *25*, 1622–1632. [\[CrossRef\]](#)
58. Raj, A.; Samuel, C.; Prashantha, K. Role of Compatibilizer in Improving the Properties of PLA/PA12 Blends. *Front. Mater.* **2020**, *7*, 193. [\[CrossRef\]](#)
59. Nam, B.-U.; Son, Y. Enhanced Impact Strength of Compatibilized Poly(Lactic Acid)/Polyamide 11 Blends by a Crosslinking Agent. *J. Appl. Polym. Sci.* **2020**, *137*, 49011. [\[CrossRef\]](#)
60. Petruš, J.; Kučera, F.; Jančář, J. Online Monitoring of Reactive Compatibilization of Poly(Lactic Acid)/Polyamide 6 Blend with Different Compatibilizers. *J. Appl. Polym. Sci.* **2019**, *136*, 48005. [\[CrossRef\]](#)
61. Walallavita, A.S.; Verbeek, C.J.R.; Lay, M.C. Biopolymer Foams from Novatein Thermoplastic Protein and Poly(Lactic Acid). *J. Appl. Polym. Sci.* **2017**, *134*, 45561. [\[CrossRef\]](#)
62. Zhu, R.; Liu, H.; Zhang, J. Compatibilizing Effects of Maleated Poly(Lactic Acid) (PLA) on Properties of PLA/Soy Protein Composites. *Ind. Eng. Chem. Res.* **2012**, *51*, 7786–7792. [\[CrossRef\]](#)
63. Can, U.; Kaynak, C. Effects of Micro-Nano Titania Contents and Maleic Anhydride Compatibilization on the Mechanical Performance of Polylactide. *Polym. Compos.* **2020**, *41*, 600–613. [\[CrossRef\]](#)
64. Chow, W.; Tham, W.; Seow, P. Effects of Maleated-PLA Compatibilizer on the Properties of Poly(Lactic Acid)/Halloysite Clay Composites. *J. Thermoplast. Compos. Mater.* **2013**, *26*, 1349–1363. [\[CrossRef\]](#)
65. Liu, Z.; Chen, Y.; Ding, W. Preparation, Dynamic Rheological Behavior, Crystallization, and Mechanical Properties of Inorganic Whiskers Reinforced Polylactic Acid/Hydroxyapatite Nanocomposites. *J. Appl. Polym. Sci.* **2016**, *133*, 43381. [\[CrossRef\]](#)
66. Park, S.B.; Lee, Y.J.; Ku, K.H.; Kim, B.J. Triallyl Isocyanurate-Assisted Grafting of Maleic Anhydride to Poly(Lactic Acid): Efficient Compatibilizers for Poly(Lactic Acid)/Talc Composites with Enhanced Mechanical Properties. *J. Appl. Polym. Sci.* **2022**, *139*, 51488. [\[CrossRef\]](#)
67. Gardella, L.; Colonna, S.; Fina, A.; Monticelli, O. On Novel Bio-Hybrid System Based on PLA and POSS. *Colloid Polym. Sci.* **2014**, *292*, 3271–3278. [\[CrossRef\]](#)

68. Liu, J.; Jiang, H.; Chen, L. Grafting of Glycidyl Methacrylate onto Poly(Lactide) and Properties of PLA/Starch Blends Compatibilized by the Grafted Copolymer. *J. Polym. Environ.* **2012**, *20*, 810–816. [[CrossRef](#)]
69. Ting, G.; Zhu, D.; Lu, Y.; Lu, S. Effect of PLA-g-GMA on the Thermal, Rheological and Physical Behavior of PLA/PBAT Blends. *Polym. Sci. Ser. A* **2019**, *61*, 317–324. [[CrossRef](#)]
70. Kangwanwatthanasiri, P.; Suppakarn, N.; Ruksakulpiwat, C.; Ruksakulpiwat, Y. Glycidyl Methacrylate Grafted Poly(lactic Acid): Morphological Properties and Crystallization Behavior. *Macromol. Symp.* **2015**, *354*, 237–243. [[CrossRef](#)]
71. Tarique, J.; Sapuan, S.M.; Khalina, A.; Sherwani, S.F.K.; Yusuf, J.; Ilyas, R.A. Recent Developments in Sustainable Arrowroot (Maranta Arundinacea Linn) Starch Biopolymers, Fibres, Biopolymer Composites and Their Potential Industrial Applications: A Review. *J. Mater. Res. Technol.* **2021**, *13*, 1191–1219. [[CrossRef](#)]
72. Wang, N.; Zhang, C.; Weng, Y. Enhancing Gas Barrier Performance of Poly(lactic Acid)/Lignin Composite Films through Cooperative Effect of Compatibilization and Nucleation. *J. Appl. Polym. Sci.* **2021**, *138*, 50199. [[CrossRef](#)]
73. Yang, W.; Dominici, F.; Fortunati, E.; Kenny, J.M.; Puglia, D. Effect of Lignin Nanoparticles and Masterbatch Procedures on the Final Properties of Glycidyl Methacrylate-g-Poly(lactic Acid) Films before and after Accelerated UV Weathering. *Ind. Crops Prod.* **2015**, *77*, 833–844. [[CrossRef](#)]
74. Nguyen, T.C.; Ruksakulpiwat, C.; Ruksakulpiwat, Y. Effect of Cellulose Nanofibers from Cassava Pulp on Physical Properties of Poly(Lactic Acid) Biocomposites. *J. Thermoplast. Compos. Mater.* **2020**, *33*, 1094–1108. [[CrossRef](#)]
75. Nguyen, T.C.; Ruksakulpiwat, C.; Rugmai, S.; Soontaranon, S.; Ruksakulpiwat, Y. Crystallization Behavior Studied by Synchrotron Small-Angle X-Ray Scattering of Poly(lactic Acid)/Cellulose Nanofibers Composites. *Compos. Sci. Technol.* **2017**, *143*, 106–115. [[CrossRef](#)]
76. Wang, Y.; Weng, Y.; Wang, L. Characterization of Interfacial Compatibility of Poly(lactic Acid) and Bamboo Flour (PLA/BF) in Biocomposites. *Polym. Test.* **2014**, *36*, 119–125. [[CrossRef](#)]
77. Wu, C.-S.; Liao, H.-T.; Jhang, J.-J.; Yeh, J.-T.; Huang, C.-Y.; Wang, S.-L. Thermal Properties and Characterization of Surface-Treated RSF-Reinforced Poly(lactide) Composites. *Polym. Bull.* **2013**, *70*, 3221–3239. [[CrossRef](#)]
78. Lyu, Y.; Chen, Y.; Lin, Z.; Zhang, J.; Shi, X. Manipulating Phase Structure of Biodegradable PLA/PBAT System: Effects on Dynamic Rheological Responses and 3D Printing. *Compos. Sci. Technol.* **2020**, *200*, 108399. [[CrossRef](#)]
79. Chuai, C.Z.; Zhao, N.; Li, S.; Sun, B.X. Study on PLA/PBS Blends. *Adv. Mater. Res.* **2011**, *197–198*, 1149–1152. [[CrossRef](#)]
80. Kangwanwatthanasiri, P.; Suppakarn, N.; Ruksakulpiwat, C.; Yupaporn, R. Biocomposites from Cassava Pulp/Poly(lactic Acid)/Poly(Butylene Succinate). *Adv. Mater. Res.* **2013**, *747*, 367–370. [[CrossRef](#)]
81. Mo, X.-Z.; Wei, F.-X.; Tan, D.-F.; Pang, J.-Y.; Lan, C.-B. The Compatibilization of PLA-g-TPU Graft Copolymer on Poly(lactide)/Thermoplastic Polyurethane Blends. *J. Polym. Res.* **2020**, *27*, 33. [[CrossRef](#)]
82. Wu, C.-S. Improving Poly(lactide)/Starch Biocomposites by Grafting Poly(lactide) with Acrylic Acid—Characterization and Biodegradability Assessment. *Macromol. Biosci.* **2005**, *5*, 352–361. [[CrossRef](#)] [[PubMed](#)]
83. Wu, C.-S.; Liao, H.-T. Modification of Biodegradable Poly(lactide) by Silica and Wood Flour through a Sol–Gel Process. *J. Appl. Polym. Sci.* **2008**, *109*, 2128–2138. [[CrossRef](#)]
84. Wu, C.-S. Poly(lactide)-Based Renewable Composites from Natural Products Residues by Encapsulated Film Bag: Characterization and Biodegradability. *Carbohydr. Polym.* **2012**, *90*, 583–591. [[CrossRef](#)] [[PubMed](#)]
85. Wu, C.-S.; Tsou, C.-H. Fabrication, Characterization, and Application of Biocomposites from Poly(Lactic Acid) with Renewable Rice Husk as Reinforcement. *J. Polym. Res.* **2019**, *26*, 44. [[CrossRef](#)]
86. Wu, C.-S.; Liao, H.-T. A New Biodegradable Blends Prepared from Poly(lactide) and Hyaluronic Acid. *Polymer* **2005**, *46*, 10017–10026. [[CrossRef](#)]
87. Wang, J.-X.; Huang, Y.-B.; Yang, W.-T. Photo-Grafting Poly(Acrylic Acid) onto Poly(Lactic Acid) Chains in Solution. *Chin. J. Polym. Sci.* **2020**, *38*, 137–142. [[CrossRef](#)]
88. Orellana, J.L.; Mauhar, M.; Kitchens, C.L. Cellulose Nanocrystals versus Poly(ethylene Glycol) as Toughening Agents for Poly(Lactic Acid)-Poly(Acrylic Acid) Graft Copolymer. *J. Renew. Mater.* **2016**, *4*, 340–350. [[CrossRef](#)]
89. Yeh, J.-T.; Chai, W.-L.; Wu, C.-S. Study on the Preparation and Characterization of Biodegradable Poly(lactide)/SiO₂-TiO₂ Hybrids. *Polym.-Plast. Technol. Eng.* **2008**, *47*, 887–894. [[CrossRef](#)]
90. Liao, H.-T.; Wu, C.-S. New Biodegradable Blends Prepared from Poly(lactide), Titanium Tetraisopropylate, and Starch. *J. Appl. Polym. Sci.* **2008**, *108*, 2280–2289. [[CrossRef](#)]
91. Beuille, E.; Darcos, V.; Coudane, J.; Lacroix-Desmazes, P.; Nottelet, B. Regioselective Halogenation of Poly(Lactide) by Free-Radical Process. *Macromol. React. Eng.* **2014**, *8*, 141–148. [[CrossRef](#)]
92. Kalelkar, P.P.; Collard, D.M. Tricomponent Amphiphilic Poly(Oligo(Ethylene Glycol) Methacrylate) Brush-Grafted Poly(Lactic Acid): Synthesis, Nanoparticle Formation, and *In Vitro* Uptake and Release of Hydrophobic Dyes. *Macromolecules* **2020**, *53*, 4274–4283. [[CrossRef](#)]
93. Kalelkar, P.P.; Geng, Z.; Cox, B.; Finn, M.G.; Collard, D.M. Surface-Initiated Atom-Transfer Radical Polymerization (SI-ATRP) of Bactericidal Polymer Brushes on Poly(Lactic Acid) Surfaces. *Colloids Surf. B Biointerfaces* **2022**, *211*, 112242. [[CrossRef](#)] [[PubMed](#)]
94. Xiao, Y.M.; Li, X.D.; Fan, H.S.; Zhu, X.D.; Teng, L.Z.; Gu, Z.W.; Zhang, X.D. A Novel Preparation Method for Nano-HA/PLA Composite with Grafted PLA. *Key Eng. Mater.* **2006**, *309–311*, 1105–1108. [[CrossRef](#)]
95. Li, C.; Hsieh, J.H.; Wang, H.Y. Plasma Polymerised Poly(Methyl Methacrylate) and Cyclopropylamine Films on Poly(lactic Acid) Nanofibres by Electrospinning. *Int. J. Nanotechnol.* **2017**, *14*, 977. [[CrossRef](#)]

96. Herskovitz, J.E.; Goddard, J.M. Reactive Extrusion of Nonmigratory Antioxidant Poly(Lactic Acid) Packaging. *J. Agric. Food Chem.* **2020**, *68*, 2164–2173. [[CrossRef](#)] [[PubMed](#)]
97. Rahmat, M.; Karrabi, M.; Ghasemi, I.; Zandi, M.; Azizi, H. Silane Crosslinking of Electrospun Poly(lactic Acid)/Nanocrystalline Cellulose Bionanocomposite. *Mater. Sci. Eng. C* **2016**, *68*, 397–405. [[CrossRef](#)]
98. Wang, J.; Chen, H.; Chen, Z.; Chen, Y.; Guo, D.; Ni, M.; Liu, S.; Peng, C. In-Situ Formation of Silver Nanoparticles on Poly(lactic Acid) Film by γ -Radiation Induced Grafting of N-Vinyl Pyrrolidone. *Mater. Sci. Eng. C* **2016**, *63*, 142–149. [[CrossRef](#)]
99. Peng, C.; Chen, H.; Wang, J.; Chen, Z.; Ni, M.; Chen, Y.; Zhang, J.; Yuan, T. Controlled Degradation of Polylactic Acid Grafting N-Vinyl Pyrrolidone Induced by Gamma Ray Radiation. *J. Appl. Polym. Sci.* **2013**, *130*, 704–709. [[CrossRef](#)]
100. El Habnoui, S.; Darcos, V.; Garric, X.; Lavigne, J.-P.; Nottelet, B.; Coudane, J. Mild Methodology for the Versatile Chemical Modification of Polylactide Surfaces: Original Combination of Anionic and Click Chemistry for Biomedical Applications. *Adv. Funct. Mater.* **2011**, *21*, 3321–3330. [[CrossRef](#)]
101. El Habnoui, S.; Lavigne, J.-P.; Darcos, V.; Porsio, B.; Garric, X.; Coudane, J.; Nottelet, B. Toward Potent Antibiofilm Degradable Medical Devices: A Generic Method for the Antibacterial Surface Modification of Polylactide. *Acta Biomater.* **2013**, *9*, 7709–7718. [[CrossRef](#)]
102. Sardo, C.; Nottelet, B.; Triolo, D.; Giammona, G.; Garric, X.; Lavigne, J.-P.; Cavallaro, G.; Coudane, J. When Functionalization of PLA Surfaces Meets Thiol–Yne Photochemistry: Case Study with Antibacterial Polyaspartamide Derivatives. *Biomacromolecules* **2014**, *15*, 4351–4362. [[CrossRef](#)] [[PubMed](#)]
103. Wu, C.-S. Renewable Resource-Based Composites of Recycled Natural Fibers and Maleated Polylactide Bioplastic: Characterization and Biodegradability. *Polym. Degrad. Stab.* **2009**, *94*, 1076–1084. [[CrossRef](#)]