



**HAL**  
open science

## **Polymer processing influence on the double electrical percolation threshold in PLA/PCL/GNP nanocomposites**

Nour-Alhoda Masarra, J.-C Quantin, Marcos Batistella, R El Hage, Monica Francesca Pucci, Romain Ravel, J. Lopez-Cuesta

► **To cite this version:**

Nour-Alhoda Masarra, J.-C Quantin, Marcos Batistella, R El Hage, Monica Francesca Pucci, et al.. Polymer processing influence on the double electrical percolation threshold in PLA/PCL/GNP nanocomposites. EPF 2022 - European Polymer Congress, Jun 2022, Prague, Czech Republic. , 2022. hal-03714581

**HAL Id: hal-03714581**

**<https://imt-mines-ales.hal.science/hal-03714581v1>**

Submitted on 5 Jul 2022

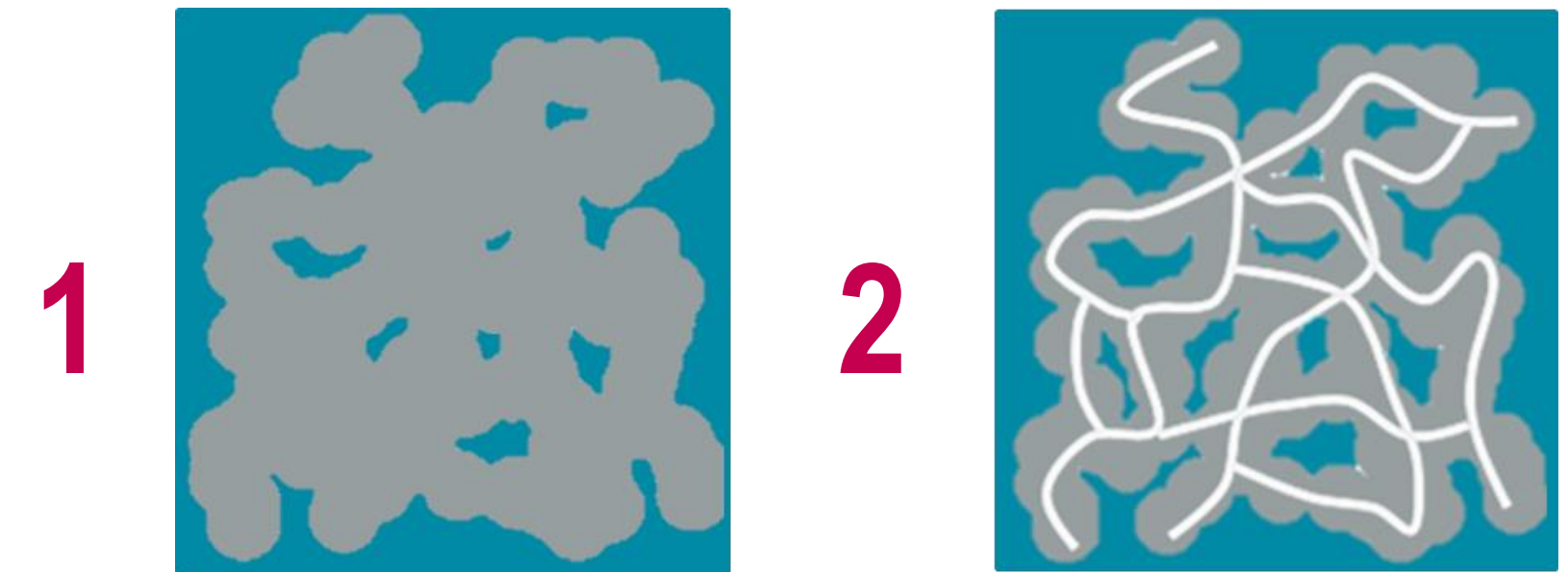
**HAL** is a multi-disciplinary open access archive for the deposit and dissemination of scientific research documents, whether they are published or not. The documents may come from teaching and research institutions in France or abroad, or from public or private research centers.

L'archive ouverte pluridisciplinaire **HAL**, est destinée au dépôt et à la diffusion de documents scientifiques de niveau recherche, publiés ou non, émanant des établissements d'enseignement et de recherche français ou étrangers, des laboratoires publics ou privés.

## Introduction

### Context/ interest:

- Percolation theory: Explains the transition from an insulating material to a conductive one in conductive filled polymer composites.
  - Electrical percolation threshold: Minimal filler concentration required to acquire a conductive network within the polymer matrix
  - How to reduce the electrical percolation threshold? By creating a **double electrical percolation threshold** resulting from adding the conductive filler to an immiscible polymer blend matrix
- Required conditions for the **double electrical percolation threshold** [1], [2]:
- Co-continuous polymer blend
  - Selective localization of the conductive filler in a single polymer phase

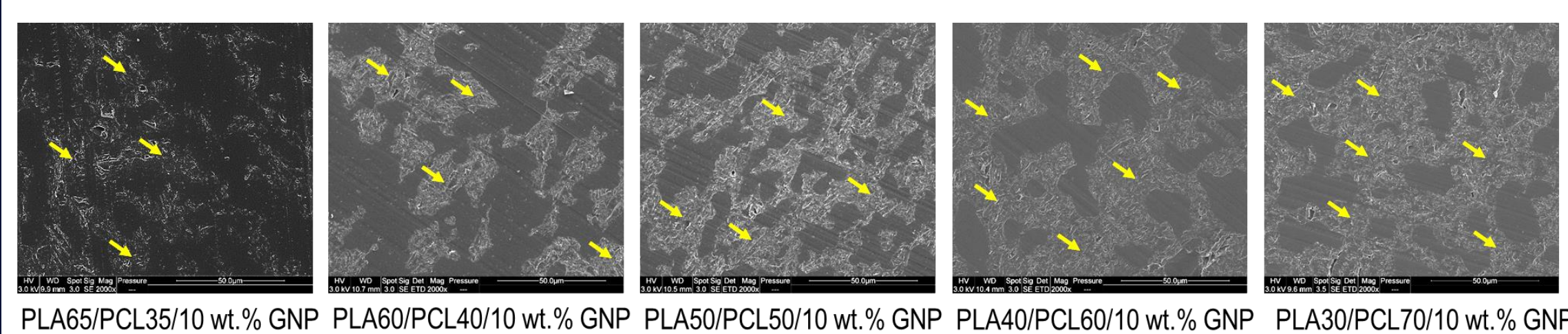


### Objectives:

- Obtaining the **double electrical percolation threshold** in poly(lactic acid) (PLA)/ polycaprolactone (PCL)/ Graphene nanoplatelets (GNP) nanocomposites
  - Studying the influence of different manufacturing processes on the co-continuous microstructure and the electrical conductivity of PLA/PCL/GNP nanocomposites
- The used processes are:
- ✓ **Compression molding**
  - ✓ **3D printing** (Fused Filament Fabrication or FFF) preceded by **single-screw extrusion**
- In our previous work, a comparison between 3D printing and injection molding influence on the microstructure and therefore the electrical conductivity of PLA/PCL/GNP composites took place [3].

## Compression molded samples

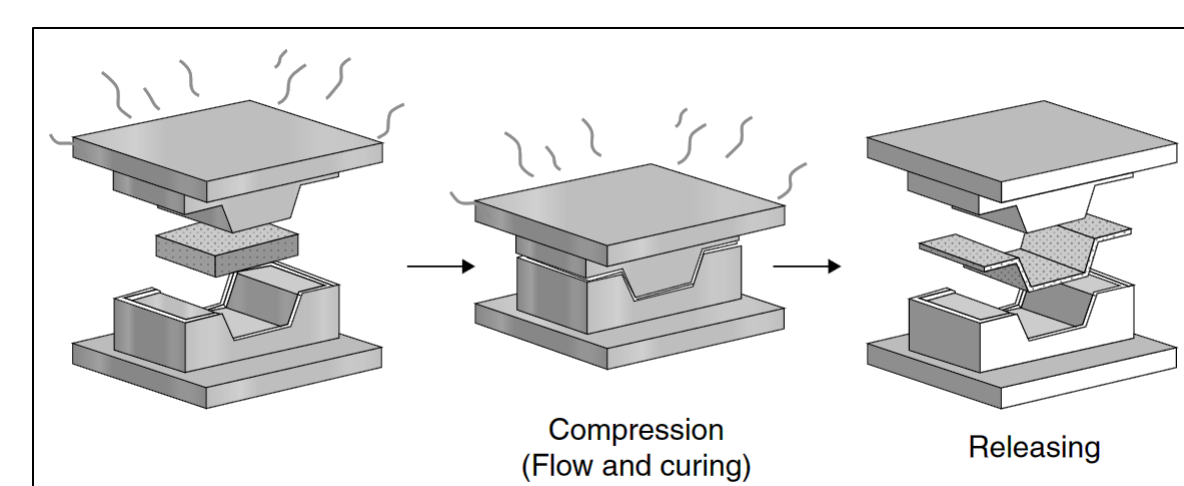
### Selective localization of graphene in the PCL phase



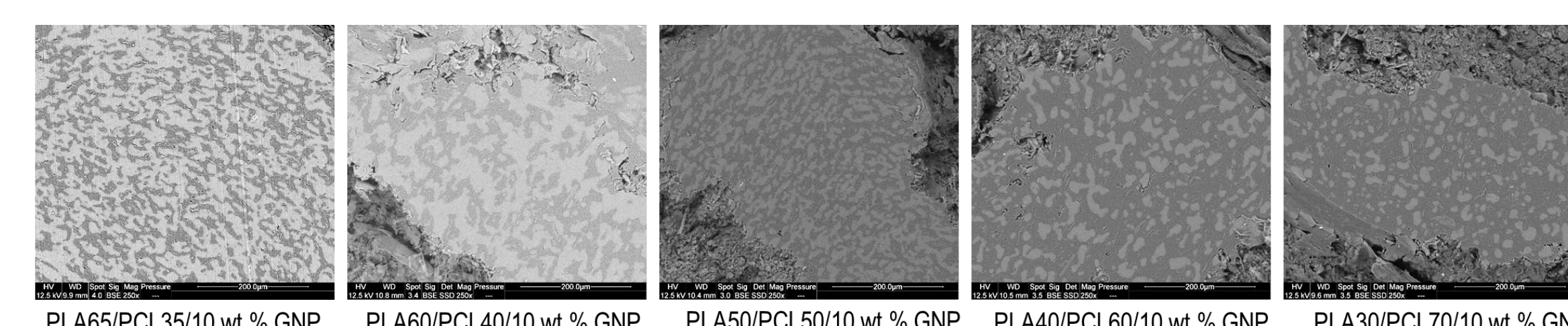
- PLA/PCL/GNP compression molded composites: Permanent selective localization of GNP in the PCL phase (The graphene + PCL zones are indicated by yellow arrows.)
- Good dispersion of graphene particles in the PCL phase

### Processing steps:

- Twin-screw extrusion to blend PLA, PCL, and GNP together
- Compression molding to prepare samples for analysis
- PLA<sub>x</sub>/PCL<sub>y</sub>/10 wt.% GNP were produced (x varies between 0 wt.% and 100 wt.% in the polymer total weight percentage).

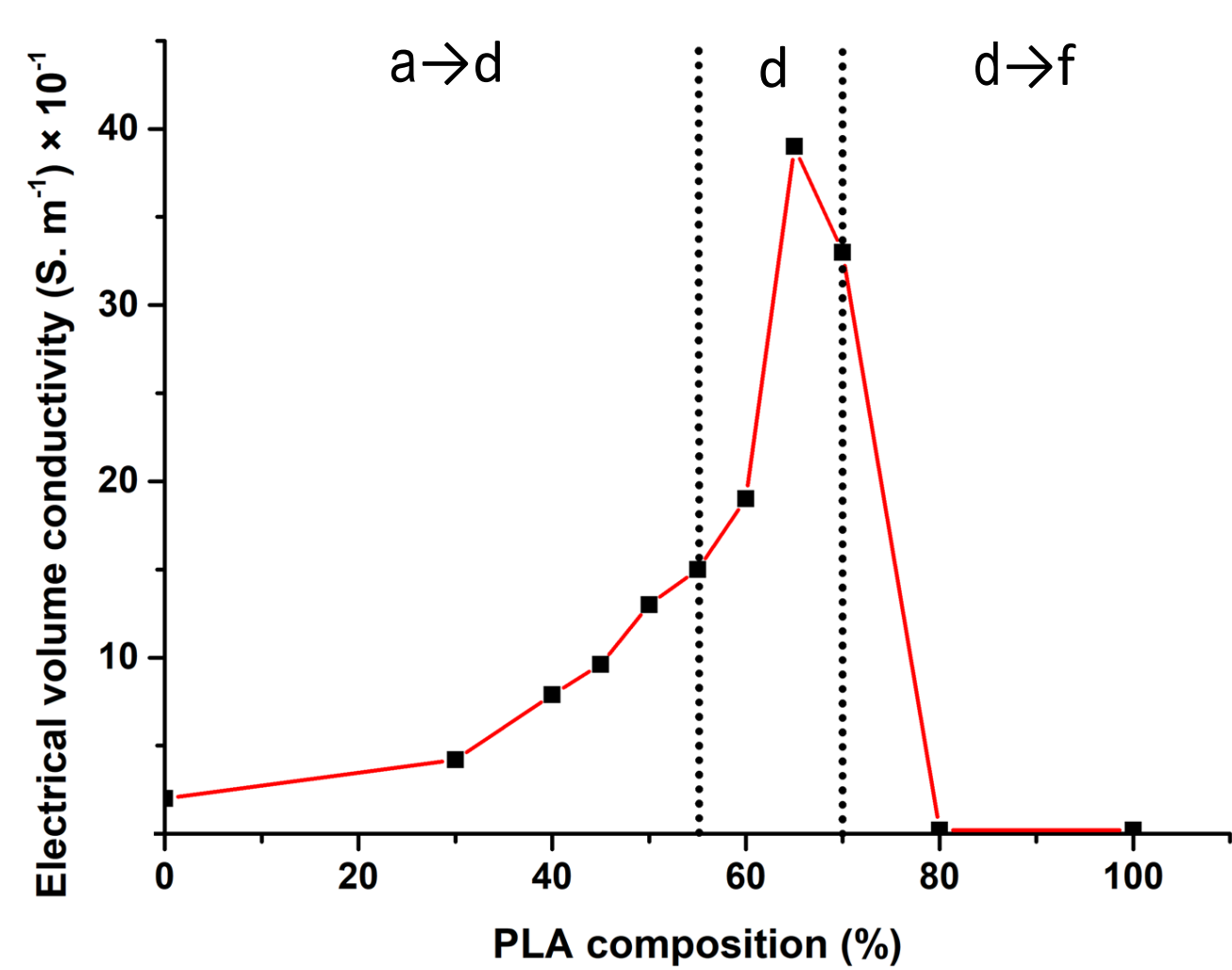


### Co-continuous microstructure

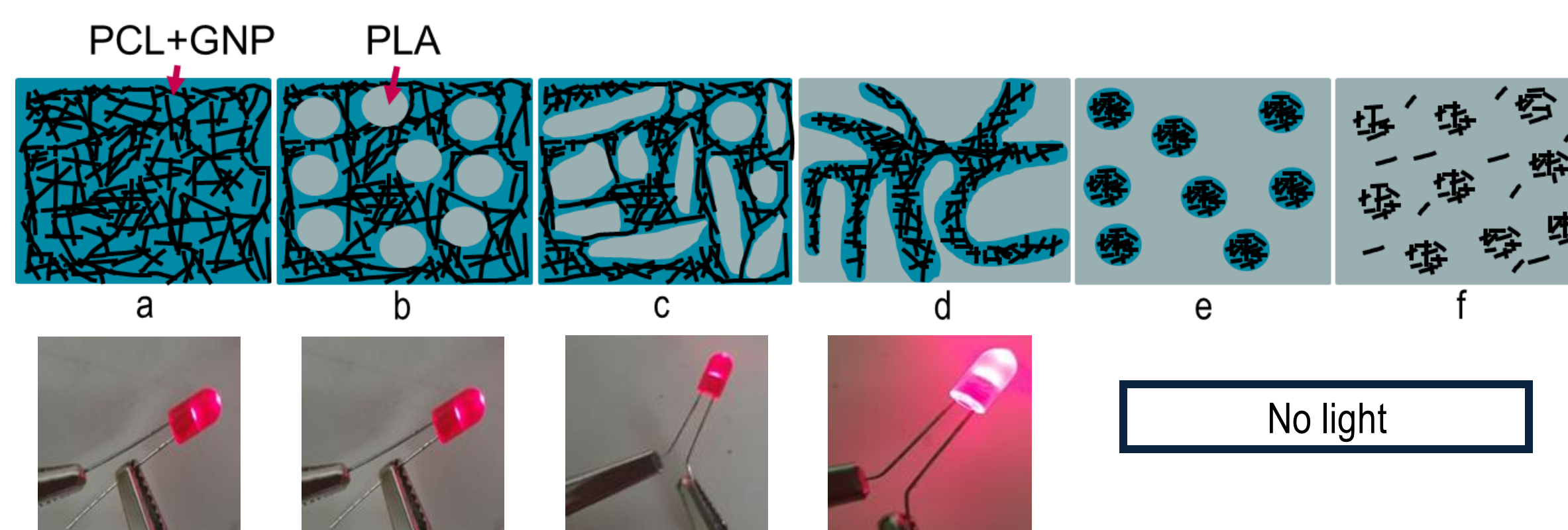


- Co-continuous microstructure is present in PLA65/PCL35/10 wt.% GNP and PLA60/PCL40/10 wt.% GNP formulations (The brighter phase is the PLA phase, and the darker phase is the PCL phase).
- The other samples possess a sea-island morphology where the PLA nodules are dispersed in the continuous PCL phase.

## Double electrical percolation threshold



Evolution of the electrical conductivity as a function of the PLA content



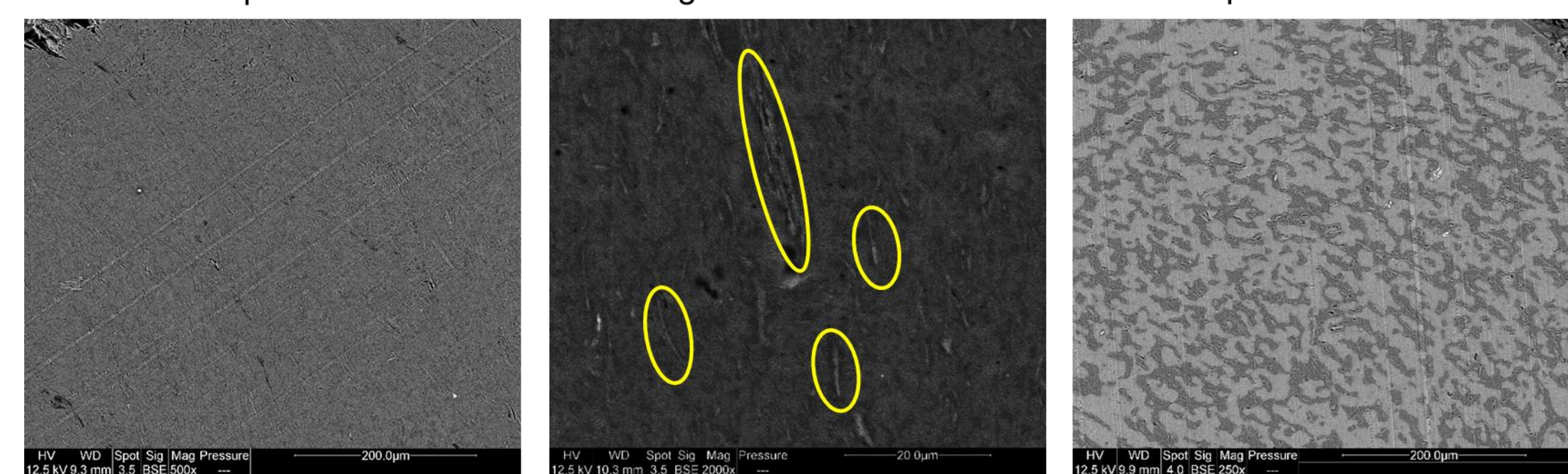
a→d: As the percentage of PLA increases from 0 wt.% to 55 wt.% in the composites, the electrical volume conductivity increases due to the greater confinement of the GNP dispersed in the PCL matrix.

d: Co-continuous morphologies are observed in the PLA55/PCL45-PLA70/PCL30 range with 10 wt.% GNP. The electrical conductivity is the highest in this zone with the best results for PLA65/PCL35/10 wt.% GNP. **A double electrical percolation threshold can be highlighted in this zone.**

d→f: The electrical volume conductivity decreases again with the increase of the PLA percentage to reach its minimal value at PLA/10 wt.% GNP.

## 3D printed samples

3D printed Single-screw extruded Compression molded

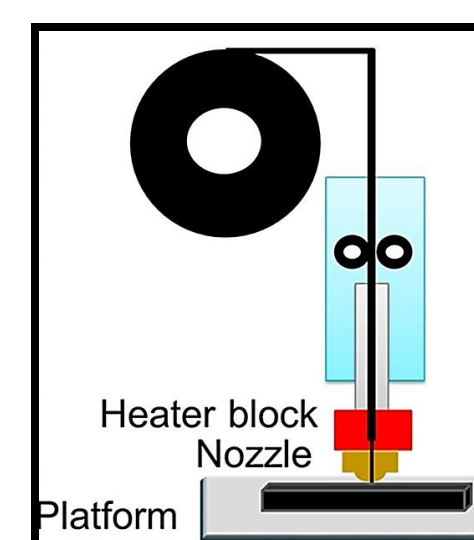


PLA65/PCL35/10% GNP

- 3D printed sample: Good adhesion between the layers
- 3D printed sample vs compression molded sample: Smaller co-continuous microstructure existing separately in each deposited layer

### Processing steps:

- Twin-screw extrusion to blend PLA, PCL, and GNP together
- Single-screw extrusion to fabricate calibrated filaments
- Fused filament fabrication to manufacture the samples to be analyzed (compared with the compression molded samples)



Sample	Electrical volume conductivity (S.m <sup>-1</sup> )	Porosity (%)	LED (5 v)
PLA80/PCL20/10 wt.% GNP	< 10 <sup>-5</sup>	12	No light
PLA65/PCL35/10 wt.% GNP	0.1	16	
PLA50/PCL50/10 wt.% GNP	0.03	14	No light
PLA40/PCL60/10 wt.% GNP	0.019	14	No light
PLA30/PCL70/10 wt.% GNP	0.014	15	No light

## References

- [1]: Huang et al., Control of carbon nanotubes at the interface of a co-continuous immiscible polymer blend to fabricate conductive composites with ultralow percolation thresholds, Journal: Carbon, Vol 73, 2014, Pages 267-274
- [2]: Chen et al., Balance the electrical properties and mechanical properties of carbon black filled immiscible polymer blends with a double percolation structure, Journal: Composites Science and Technology, Vol 140, 2017, Pages 99-105
- [3]: Masarra et al., Fabrication of PLA/PCL/Graphene nanoplatelets (GNP) electrically conductive circuit using the fused filament fabrication (FFF) 3D printing technique, Journal: Materials, Vol 15, 2022

## Conclusion

- This work succeeded for the first time to obtain the **double electrical percolation threshold** in PLA/PCL/GNP composite systems.
- The influence of several manufacturing processes on the co-continuity of PLA and PCL and consequently the electrical volume conductivity were addressed for the first time.
- Compression molded samples: Wide range of co-continuity that varies between PLA55/PCL45/10 wt.% GNP and PLA70/PCL30/10 wt.% GNP. **Reason:** Induced annealing effect
- 3D printed samples: PLA65/PCL35/10 wt.% GNP shows the highest electrical conductivity but still less than that of the compression molded sample **Reason:** Small co-continuous microstructure present in each deposited layer

## Contact information

Corresponding author's information:

**Nour Alhoda Masarra**  
PhD student at the Ecole des Mines d'Ales (France)

Address: Ales, France

Tel: +33/616783841

Email: [nour-alhoda.masarra@mines-ales.fr](mailto:nour-alhoda.masarra@mines-ales.fr)

