



HAL
open science

Numerical simulation of a preventative evacuation using a multi-agent framework

Cyril Orengo, Florian Tena-Chollet, Sophie Sauvagnargues

► To cite this version:

Cyril Orengo, Florian Tena-Chollet, Sophie Sauvagnargues. Numerical simulation of a preventative evacuation using a multi-agent framework. CISAP 10 - 10th International Conference on Safety & Environment in Process & Power Industry, May 2022, Florence, Italy. , 2022. hal-03672226

HAL Id: hal-03672226

<https://imt-mines-ales.hal.science/hal-03672226>

Submitted on 5 Dec 2022

HAL is a multi-disciplinary open access archive for the deposit and dissemination of scientific research documents, whether they are published or not. The documents may come from teaching and research institutions in France or abroad, or from public or private research centers.

L'archive ouverte pluridisciplinaire **HAL**, est destinée au dépôt et à la diffusion de documents scientifiques de niveau recherche, publiés ou non, émanant des établissements d'enseignement et de recherche français ou étrangers, des laboratoires publics ou privés.

Authors

Cyril ORENGO
Florian TENA-CHOLLET
Sophie SAUVAGNARGUES

Context of pedestrian evacuations



In conjunction of a possible **rainfall event** and the presence of a flood control dam, this paper explores the **evacuation of population** as a response to a **NaTech hazard**. The hazard of dam failure is thus a cascade reaction of a prior meteorological hazard, which directs the work towards preventive evacuation. It is also **fully pedestrian**.



To **enhance** the understanding of preventive evacuation process



To **build a simulation** of an evacuation using a Multi-Agent System

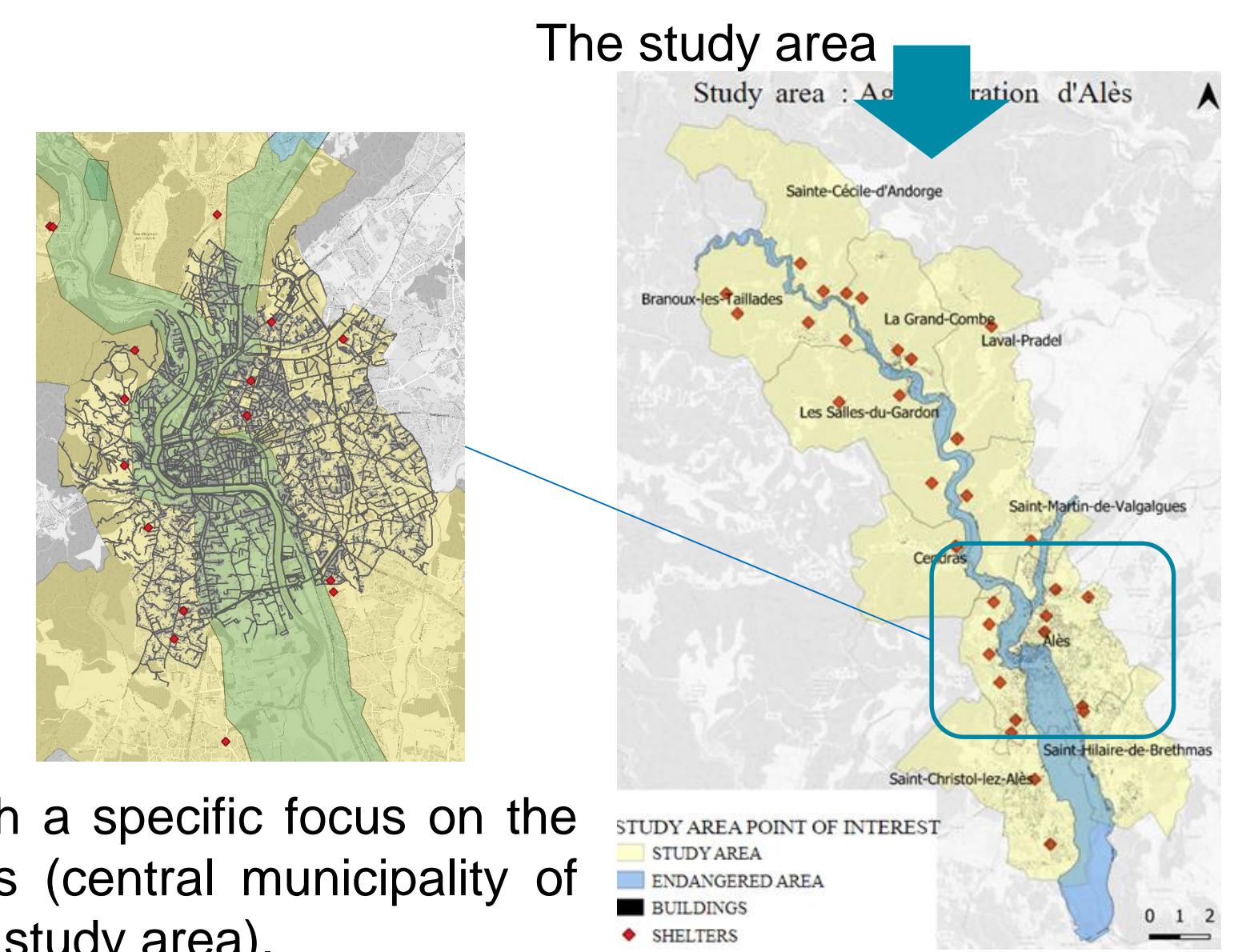


To **model** a standard evacuation process using UML



To **apply** the simulation to a study case

This work questions the possibility to model and simulate a **full pedestrian evacuation** using a **multi-agent framework**.



With a specific focus on the Ales (central municipality of the study area).

Methodology

1

Starting from various information material, the first aim is to reach a global understanding of « **what is an evacuation ?** »



Using **operational feedbacks** and **literature review** on the process to identify actors and interactions.

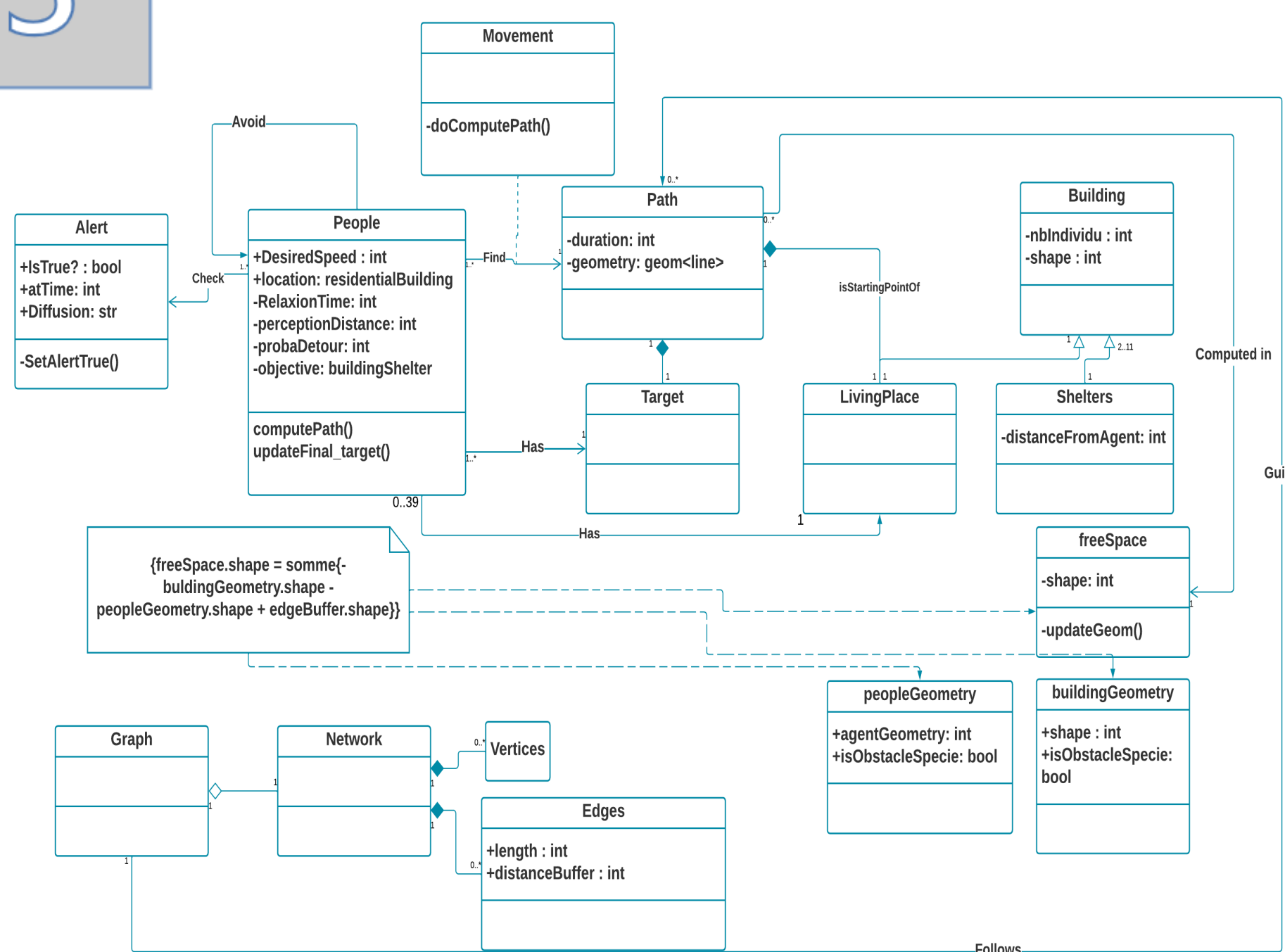
2

Highlight of **key points** and identification of **main problems**.

- Herding effects [1], stop & go, bottleneck** caused by the **pedestrian density**.
- Contextual and organizational** factors variance
- Non-obedience / lack of knowledge** of a significant part of the population
- Lack of **global approach** of the process
- No **fully pedestrian** simulation
- Non-efficient **crisis scenarios**

3

Reusable model using a standard modelling language (UML)



4

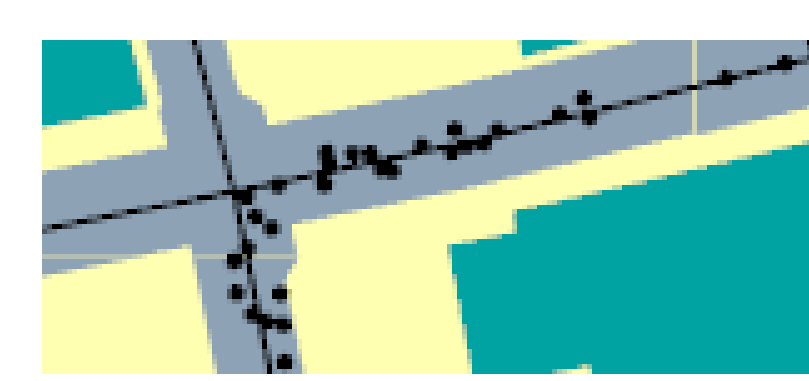
The simulation

Simulation

An environment



Peoples



Each dot **embodies a person** concerned by the evacuation process.

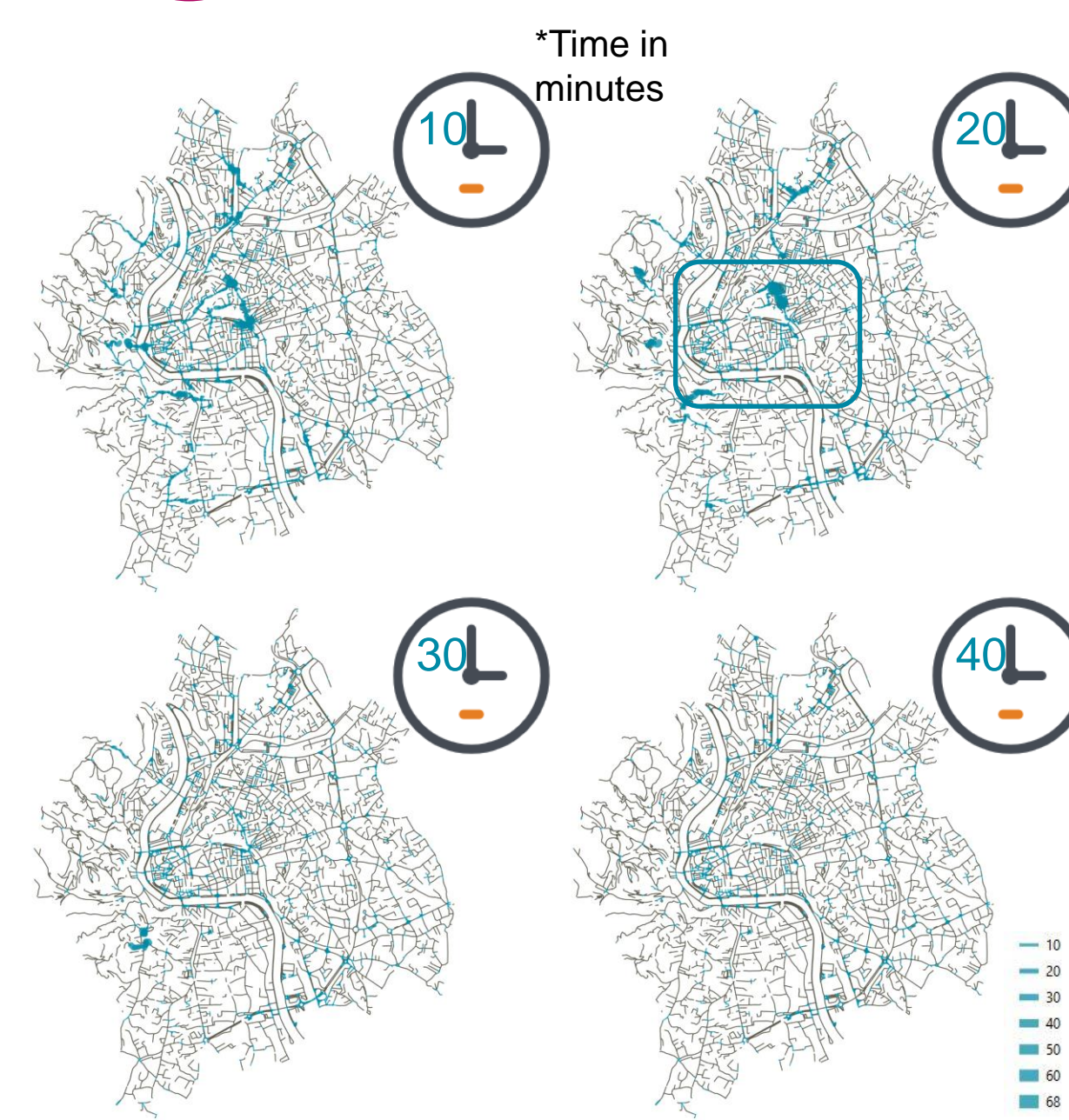
Algorithms



- Pathfinding
- Avoidance
- Behavior

Using a simplified **Social Force Model [2]** allows to render pedestrian micro-dynamics.

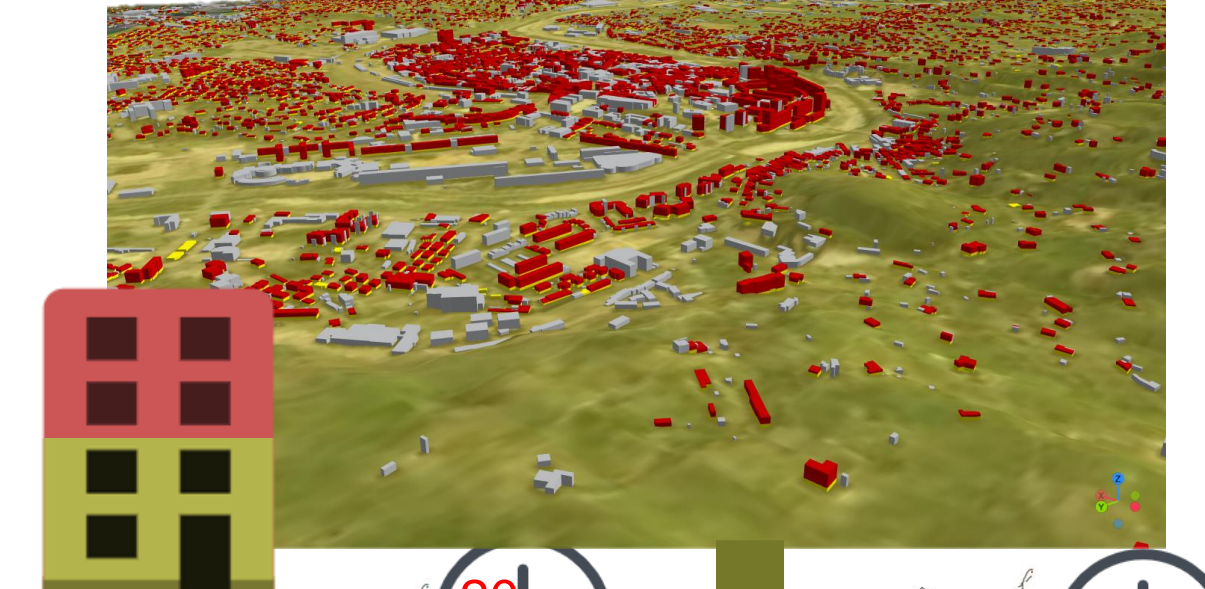
Results



The standard simulation consider only peoples leaving under two meters height and less than **200 meters** away (blue area) from the river, as concerned by the alert.



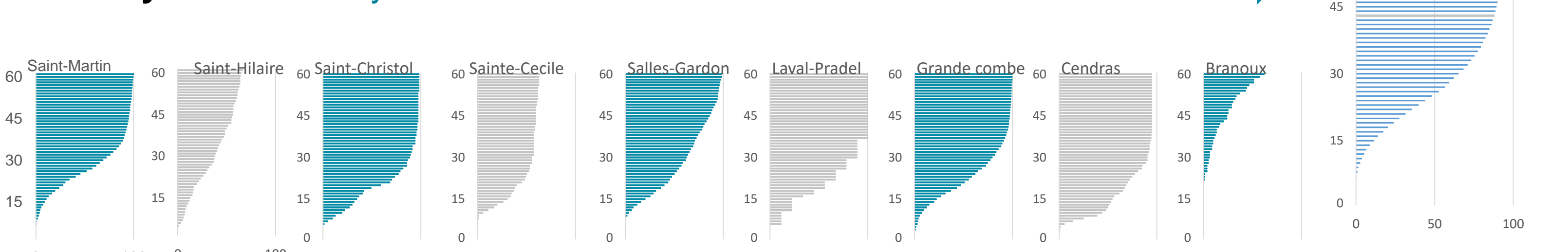
Two scenarios, one considering a larger zone (1km) around the river (in yellow), and another evacuating also the population leaving upstairs within the building (in red) in the 1km zone, were also explored



Using the **perfect readiness hypothesis**. Results show a peak in network demand around 20 minutes after the alert.

Municipality	Number of shelters	Population concerned	Population / Shelters	Evacuation time (in second)
Alès	11	3'673	334	65
Branoux-Ies-Taillades	4	84	21	115
La Grande Combe	4	401	100	60
Laval-Pradel	2	4	2	40
Salles du Gardon	4	444	111	99
Sainte-Cécile d'Andorge	2	96	48	64
Saint-Christol	2	104	52	58
Saint-Hilaire de B.	1	198	198	135
Saint-Martin de Val.	2	568	284	121
Cendras	2	153	77	42

According to the table, evacuation time tends to be **reduced** when the number of people for a shelter is lower. Mapped evacuation data also shows **high pedestrian density** at the density at the east-north exit.



Conclusion and perspectives

The use of a **Multi-agent system** framework is well suit to simulate pedestrian evacuation. Results demonstrate realistic egress times, and serious possibilities to fulfill **various indicators**. It is thus, an interesting first contribution to be completed with better integration of **human behaviors** complexity, and contextual scenarios.

References

- [1] Moussaïd M., Helbing D., Garnier S., Johansson A., Combe M., Theraulaz G., 2009, Experimental study of the behavioral mechanisms underlying self-organization in human crowds, Proceedings of the Royal Society B: Biological Sciences, 276(1668), pp. 2755–2762. doi: 10.1098/rspb.2009.0405.
- [2] Helbing D., Molnár, P., 1995, Social force model for pedestrian dynamics, Physical Review E, 51(5), pp. 4282–4286. doi: 10.1103/PhysRevE.51.4282.