



HAL
open science

The role of personality traits in inpatient pulmonary rehabilitation response in patients with chronic obstructive pulmonary disease

Pauline Caille, François Alexandre, Virginie Molinier, Nelly Heraud

► To cite this version:

Pauline Caille, François Alexandre, Virginie Molinier, Nelly Heraud. The role of personality traits in inpatient pulmonary rehabilitation response in patients with chronic obstructive pulmonary disease. *Respiratory Medicine*, 2021, 190, pp.106680. 10.1016/j.rmed.2021.106680 . hal-03583755

HAL Id: hal-03583755

<https://imt-mines-ales.hal.science/hal-03583755v1>

Submitted on 5 Jan 2024

HAL is a multi-disciplinary open access archive for the deposit and dissemination of scientific research documents, whether they are published or not. The documents may come from teaching and research institutions in France or abroad, or from public or private research centers.

L'archive ouverte pluridisciplinaire **HAL**, est destinée au dépôt et à la diffusion de documents scientifiques de niveau recherche, publiés ou non, émanant des établissements d'enseignement et de recherche français ou étrangers, des laboratoires publics ou privés.



Distributed under a Creative Commons Attribution - NonCommercial 4.0 International License

1 **Short title:** Personality and pulmonary rehabilitation

2

3 **Title:** The role of personality traits in inpatient pulmonary rehabilitation response in patients
4 with Chronic Obstructive Pulmonary Disease

5

6 **Authors:** Pauline Caille*^{1,2,3,4}, François Alexandre^{3,4}, Virginie Molinier^{3,4}, Nelly Heraud^{3,4}

7

8

9 **Affiliations:**

10 1. Clinique du Souffle La Vallonie – Korian, Lodève, France

11 2. Euromov Digital Health in Motion, University of Montpellier, IMT Mines Ales, Montpellier
12 France

13 3. Direction de la recherche clinique et de l'innovation en Santé – Korian, Lodève, France

14 4. GCS CIPS, Lodève, France

15

16 * Correspondence :

17 Euromov Digital Health in Motion, University of Montpellier, IMT Mines Ales, UFR STAPS,
18 700, Avenue du Pic St Loup, 34090 Montpellier, France

19 E-mail: caillepau@gmail.com

20 Phone number : +33 6.46.04.78.47

21

22

23

24

25

26

27 **Highlights**

- 28 • A high level of openness to experiences might be a risk factor of non-response to
29 pulmonary rehabilitation on health-related quality of life in persons with COPD
- 30 • Neuroticism, extraversion, conscientiousness and agreeableness were not associated
31 with inpatient pulmonary rehabilitation effectiveness.
- 32 • Considering personality traits could be interesting for treatment individualization and
33 optimization.

34 **Summary**

35 **Background:** The effectiveness of pulmonary rehabilitation (PR) is a critical issue for chronic
36 obstructive pulmonary disease (COPD) patients. However, PR response is marked by a strong
37 heterogeneity, partially unexplained to date. We hypothesized that personality traits defined by
38 the Five-Factor Model could modulate the effect of inpatient-PR. **Objective:** The aim was to
39 assess the associations between these five personality traits and PR outcomes. **Methods:** 74
40 persons with COPD admitted for a 5-week inpatient PR program had a personality assessment
41 at the start of the program (T1). Exercise capacity, quality of life, sensory and affective dyspnea
42 dimensions were assessed at T1 and at the end of the program (T2). Their evolution was
43 evaluated using the delta score between T2 and T1. PR response was defined using the minimal
44 clinically important change score for each of them. A composite response was established
45 distinguishing the poor responders' group, made of patients who responded to 0, 1 or 2
46 parameters and the good responders' group, with patients who responded on 3 or 4 indicators.
47 **Results:** Logistic regressions analyses highlighted that those with a high level of openness
48 [OR=0.36, 95% CI=0.15 – 0.74, p<.01] were less likely to respond on quality of life, controlling
49 for socio-demographic factors and the severity of the disease. **Conclusion:** This study shows
50 that the investigation of the personality constitutes an interesting perspective for better
51 understanding the interindividual differences observed between patients in the PR response.
52 Tailoring clinical intervention to the patient's personality could be a promising prospect for
53 optimizing PR effectiveness.

54

55

56 **Keywords:** Five Factor Model, Personality, Pulmonary rehabilitation, Respiratory Diseases,
57 Response, Therapeutic Outcomes

58

59 **Introduction**

60 Pulmonary rehabilitation (PR), the reference treatment for people with chronic respiratory
61 diseases (CRDs), is a comprehensive and multidisciplinary intervention aiming to improve both
62 the physical and psychological health of patients, as well as specific symptoms of the disease
63 [1]. Despite a large body of research demonstrating that PR generates numerous bio-psycho-
64 social benefits [2-4], it reported a significant heterogeneity in PR response [5-8]. Overall, these
65 studies highlighted that between one-third to one-half of patients enrolled in a PR program
66 exhibited no clinically significant improvement at the end of the PR program on various clinical
67 outcomes including exercise capacity and quality of life [5,8]. Given the key role of PR in CRDs
68 management, the identification of factors associated with PR outcomes has been widely
69 investigated in the literature [9-12]. However, the understanding of this PR response
70 heterogeneity remains incomplete, particularly since most studies were essentially limited to
71 investigating the influence of intrinsic parameters (e.g., forced expiratory volume in 1 second
72 at the beginning of the program). Yet, extrinsic factors, such as therapeutic environment, and
73 above all the way patients interact with it, could also notably influence PR effectiveness. This
74 could be particularly relevant in the specific context of inpatient PR, characterized by i) a
75 rupture with the patient's home environment lasting several weeks, ii) being confronted with
76 new social rules and norms and iii) a new community life with other people suffering from
77 CRD's and a variety of healthcare professionals. All patients, depending on their psychological
78 predispositions, might adapt differently to a PR environment and thus, might not gain the same
79 benefits from the therapeutic care management. For example, introvert patients could have
80 greater difficulties progressing correctly in collective activities whereas, extroverts could
81 benefit more from activities providing opportunities for social interaction. Thus, the
82 heterogeneity observed in PR response could partly be the reflection of this adequation between
83 PR environment and one's tendency to act, think and feel, i.e. personality traits. According to
84 the Five Factor Model [13,14], personality is made of five dimensions present in varying
85 degrees in individuals and influencing their behavior and life experiences [15]. These five traits
86 include Neuroticism (i.e., tendency to be emotionally unstable and stressed), Extraversion (i.e.,
87 tendency to be optimistic and dynamic), Openness to experience (i.e., tendency to look for new
88 experiences), Agreeableness (i.e., tendency to be altruistic) and Conscientiousness (i.e.,
89 tendency to be self-disciplined). Previous studies showed that these personality traits were
90 associated with some PR-specific environmental elements. For example, personality was
91 associated with the development of therapeutic alliance [16], quantity and quality of social
92 interpersonal interactions [17], respecting authority [18] and assimilation of cultural social

93 norms [19]. Personality traits were also associated with treatment observance and compliance
94 [20-22], effectiveness of non-pharmacological interventions [23], and participation to
95 rehabilitation activities [24]. Moreover, the association between personality traits and physical
96 activity has been established [25,26]. Thus, these studies suggested that personality traits, given
97 their relationships with PR elements, could influence the way patients adapt to a PR
98 environment. In fact, personality could become an explanatory psychological factor for
99 interindividual differences observed in PR response. This is why, we hypothesized that
100 personality traits could be associated with the effectiveness of inpatient-PR. Therefore, the
101 objective of the present study was to investigate associations between the five personality traits
102 and PR response in persons with chronic obstructive pulmonary disease.

103

104 **Material and methods**

105 *Ethics approval*

106 The study protocol was approved by an independent French ethics committee (CPP Ouest IV
107 Nantes, reference number: 2018-A03141-54, 03/04/2019). The present study abided by the
108 principles of the Declaration of Helsinki for human experimentation of 1975, revised in 2000.

109

110 *Data accessibility*

111 Individual values for all supporting data are available upon request.

112

113 *Participants and procedure*

114 Patients were recruited during a 5-week inpatient PR program at the “Clinique du Souffle La
115 Vallonie” (Lodève, France), between April 2019 and January 2020. Patients were eligible for
116 the study if they: 1) had a validated diagnosis of chronic obstructive pulmonary disease
117 (COPD), 2) were older than 18 years old and 3) had healthcare coverage. Patients were not
118 included in the study if they were unable to respond to paper-based questionnaires and/or if
119 they had a mental disorder that could affect their judgment. Eligible participants were invited
120 to participate in this study during an inclusion visit (T0) that took place during the first two
121 days of the program. No intervention or incentive was provided to encourage study
122 participation. In accordance with the regulations governing research displayed in 3 ° of article
123 L.1121-1 of the French public health code concerning non interventional studies based only on
124 questionnaires or interviews, a declaration of non-opposition to participating in the study was
125 collected from all participants before inclusion. Patients were recruited on a voluntary basis,
126 after medical advice and checking all criteria mentioned above. Patients enrolled in the study

127 were assessed twice, during the first week (T1) and at the end of the last week of the PR program
128 (T2). The mean time interval between T1 and T2 was 25 days (Standard deviation = 5 days).

129

130 **Pulmonary rehabilitation**

131 The inpatient PR program was conducted following recommendations of the American
132 Thoracic and European Respiratory societies [1]. The program was carried out over 5 weeks.
133 Patients received a complete clinical evaluation (clinical assessment, respiratory function
134 measures at rest by plethysmography, blood gas test, and body composition) and benefited from
135 30 to 40 sessions of exercise training including endurance training (average of 7h/wk.) and
136 resistance training both for upper and lower limbs (average of 2h/wk.). Exercises focused on
137 balance, coordination, flexibility and posture. Furthermore, collective relaxation sessions (on
138 average 4 hours / week) were also offered. In addition, participants had access to group
139 therapeutic education sessions (e.g., pain and dyspnea self-management, smoking cessation,
140 behavioral change, physical activity planning...) and nutrition, psychological and nursing
141 support in individual sessions (average of 3 hours / wk.). Average PR duration in our sample
142 was 35 days (SD=4 days).

143

144 *Measures*

145 **Personality traits**

146 Personality traits of the Five-Factor model were measured at T1 using the French version of the
147 Big Five Inventory (BFI-Fr) [27]. Participants were asked whether they agreed or disagreed
148 with 45 descriptive statements using a 5-point Likert scale, ranging from 1 (*strongly disagree*)
149 to 5 (*strongly agree*). Eight items assessed the level of extraversion (e.g., "*I see myself as*
150 *someone who is sociable*") and neuroticism (e.g., "*I see myself as someone one who is easily*
151 *anxious*") in participants. Nine items measured the level of conscientiousness (e.g., "*I see myself*
152 *as someone who is effective in his work*"). Finally, answers on ten items assessed the level of
153 openness to experiences, (e.g., "*I see myself as someone creative, full of original ideas*"), as
154 well as agreeableness (e.g., "*I see myself as someone who is naturally forgiving*"). A high score
155 in a specific trait indicates a high level on that trait. In the sample, Cronbach alphas, measuring
156 the internal consistency of the 5 scales, were .77 for neuroticism, .73 for extraversion, .85 for
157 openness, .68 for agreeableness, and .65 for conscientiousness.

158

159

160

161 **Sociodemographic, anthropometric and clinical characteristics**

162 Collected demographics included self-reported age (in years), sex (coded 0 for men and 1 for
163 women) and education (in years). Anthropometric data included height (cm), weight (kg),
164 which led to calculating the body mass index (BMI) ($\text{kg}\cdot\text{m}^{-2}$). Deprivation was measured using
165 the EPICES (Evaluation of Deprivation and Inequalities in Health Examination Centers) score
166 [28], calculated from weighted scoring of answers to 11 questions pertaining, for example, to
167 health insurance, home ownership, financial situation. The final EPICES score ranged from 0
168 to 100. Clinical characteristics included pulmonary and cognitive function assessments.
169 Regarding pulmonary function assessment, forced expiratory volume at the first second of
170 maximum expiration (FEV_1), its predicted value ($\text{FEV}_1\% \text{ pred}$) and Tiffeneau index ($\text{FEV}_1 /$
171 FVC) were measured with a plethysmograph (V6200 Autobox, SensorMedics Corp., Yorba
172 Linda, CA, USA). Cognitive impairment was assessed with the Montreal Cognitive Assessment
173 (MoCA) test [29]. A score above or equal to 26 on a 0–30-point scale was considered normal.
174 All of these variables were assessed at T1.

175

176 **Exercise capacity**

177 Exercise capacity was assessed at T1 and at T2 with a 6-minute walking test (6MWT) at the
178 start and at the end of PR, respectively. In accordance with good clinical practices and the
179 guidelines of the American Thoracic Society [1] patients were instructed to walk as far as
180 possible in 6 minutes, in a 30-meter corridor.

181

182 **Quality of life**

183 Health-related quality of life was measured at T1 and at T2 with the short French self-reported
184 questionnaire VQ11, specific to COPD [30]. This questionnaire includes 11 items related to
185 feelings experienced in dealing with consequences of the disease. Each participant indicated
186 the intensity experienced for each feeling on a scale ranging from 1 (not at all) to 5 (extremely).
187 This questionnaire enables the calculation of the overall health-related quality of life score and
188 3 sub-dimensions: functional, psychological and relational scores. The VQ11 score ranges from
189 11 to 55 and a low global score (< 22) indicates a better health-related quality of life.

190

191 **Dyspnea**

192 Dyspnea was assessed at T1 and at T2 using the French version of the "Multidimensional
193 dyspnea profile" questionnaire (MDP) [31-33]. The MDP consists of 11 items evaluated on an
194 analog scale ranging from 0 (*not felt*) to 10 (*strongly felt*). This questionnaire evaluates 3
195 subdomains of dyspnea. The first item (A1) assesses the immediate unpleasantness of the

196 dyspnea. Then, five items (SQ) measure sensations linked to dyspnea, both in terms of quality
197 and intensity. The last five items (A2) assess emotions arising from experiencing dyspnea, in
198 terms of quality and intensity. From these scores, two components of dyspnea can be calculated:
199 the sensory dimension (MDP-SD) of dyspnea, corresponding to the sum of the 5 items from the
200 SQ, and affective dimension (MDP-AD) of dyspnea calculated by adding A1 and A2. To
201 complete the questionnaire, patients were instructed to focus on the worst episode of dyspnea
202 experienced over the past two weeks.

203

204 *Effect of pulmonary rehabilitation*

205

206 **Evolution of clinical indicators during PR**

207 The effects of respiratory rehabilitation were studied via the evolution of the 6MWT distance
208 and VQ11, MDP-SD and MDP-AD scores. The evolution of these clinical indicators was
209 evidenced by the delta calculated by subtracting values at T1 from values at T2. In order to
210 promote the readability of the results, all values were expressed in absolute values. Therefore,
211 a positive score denotes an improvement of the parameters while a negative score represents a
212 deterioration.

213

214 **Categorization of COPD patients according to PR response**

- 215 • Responders vs. Non-Responders

216 Responders and non-responders were differentiated using the Minimal Clinically Important
217 Difference (MCID) available for each indicator in the literature. These MCIDs and associated
218 reference studies are listed in Table 1.

219

- 220 • Good-Responders vs. Poor-Responders

221 In order to best reflect the multidisciplinary objectives of the PR, a composite response was
222 defined based on the previous distinctions from the assessment of physical and psychological
223 indicators. Patients were therefore classified into 2 response profiles: the “poor responders”
224 group, consisting of patients who only responded on 0, 1 or 2 parameters according to the
225 respective MCIDs and the “good responders” group, where patients showed a clinically
226 significant improvement on 3 or 4 indicators.

227

228

229 **Table 1.** Minimal Clinically Important Differences defined for 6MWT, VQ11, MDP-SD and
 230 MDP-AD.

Indicators		MCIDs	References
6MWT		+ 30 meters	[34,35]
VQ11		- 2 points	[36]
MDP-SD		- 3.02 points	[37]
MDP-AD	A1	- 0.58 point	
	A2	and/or - 2.07 points	

231
 232 *Data analyses*

233 To test whether the five personality traits were associated with the evolution of clinical
 234 indicators (i.e., 6MWT, VQ11, MDP-SD, MDP-AD) during PR, multiple linear regression
 235 analyses were performed, adjusted for relevant demographic and clinical information: age (in
 236 years), sex (coded as 1 for men and 0 for women), educational attainment (in years), %FEV1,
 237 MoCA score, EPICES score and value at baseline. For these analyses, we used the lm() function
 238 of “stats” package in R studio software.

239 Furthermore, to test associations between the five personality traits and response on
 240 each clinical indicator, logistic regressions analyses were carried out, adjusted for age, sex,
 241 educational attainment, %FEV1, MoCA score, EPICES score and score at baseline. For each
 242 indicator, the responder group was recoded as 1 while the non-responder group was recoded as
 243 0. For these analyses, we used the glm function of “stats” package in R studio software.

244 Moreover, independent sample t-tests and chi-squared analyses were performed to
 245 examine baseline differences between responders and non-responders on composite PR
 246 response regarding socio-demographics, anthropometrics, pulmonary function characteristics
 247 and clinical indicators. Additional logistic regression analyses were used to test relationships
 248 between PR composite response and the five personality traits, adjusted for relevant
 249 demographics and clinical elements: age, sex, education, %FEV1, MoCA score, and the
 250 EPICES score. For these analyses the "good response" group was recoded as 1 while the "poor
 251 response" group was recoded as 0. Taking into account the high number of statistical tests
 252 carried out, we chose to lower the significance level at $p \leq .01$, in order to limit the risk of type
 253 I error. Patients who did not complete the PR program or patients with incomplete data were
 254 excluded from the analyses. A flowchart is presented in figure 1. For all outcomes, personality
 255 scores were standardized and analyses were conducted separately for each trait and then with

256 all traits simultaneously within the same model. All statistical tests were carried out with R and
257 R studio software. The R studio script is available upon request.

258

259 **Figure 1.** Flow Chart

260

261

262

263

264

265

266

267

268

269

270

271

272

273

274

275

276

277

278

279

280

281

282

283

284

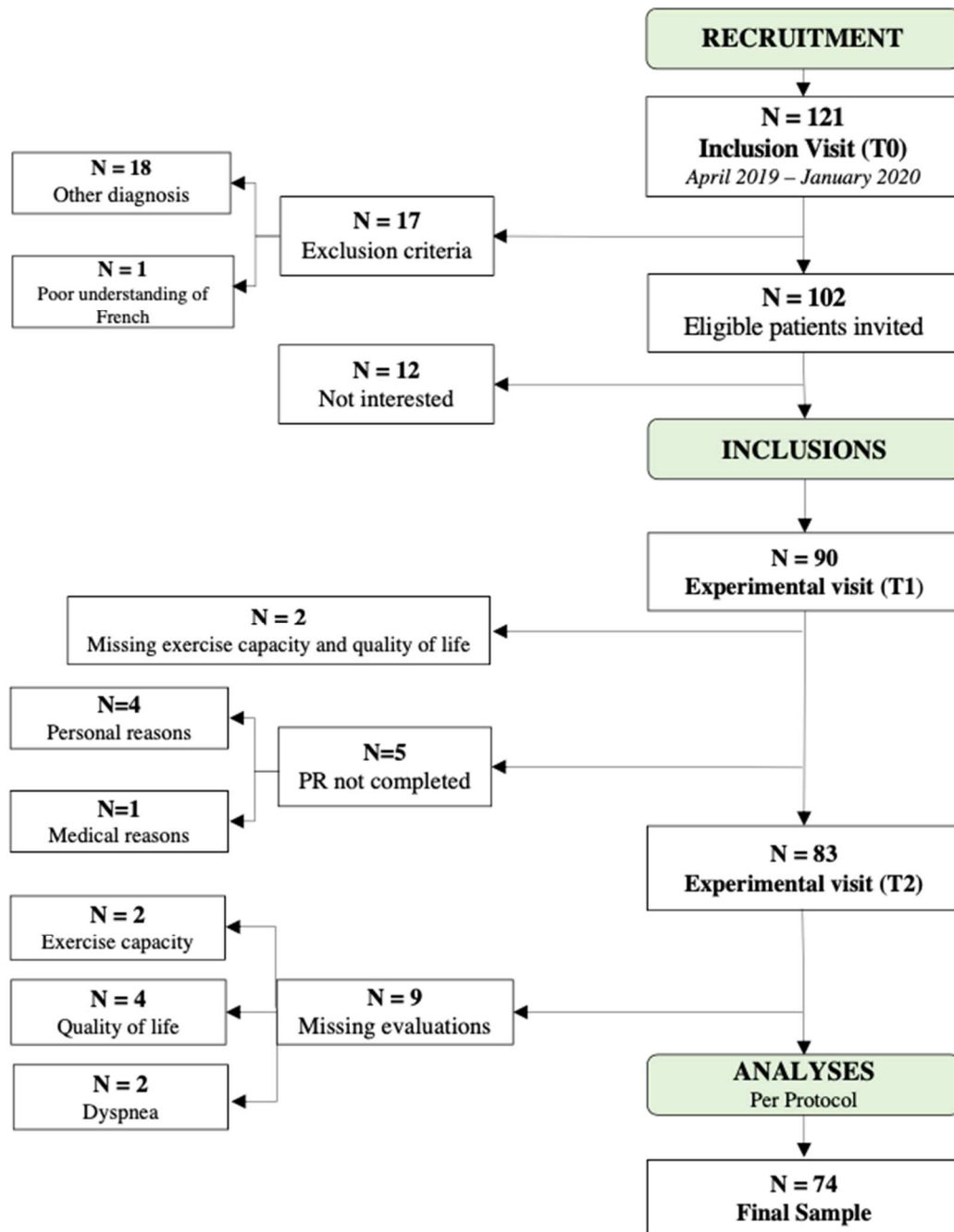
285

286

287

288

289



290 **Results**

291 *Patient characteristics*

292 Among the 121 patients invited to participate in the present study, 102 met the inclusion criteria
 293 and 90 agreed to participate. Five patients did not complete the rehabilitation program and 11
 294 patients did not complete all the evaluations. As such, the final sample included 74 persons with
 295 COPD (Figure 1). Baseline characteristics of participants are reported in Table 2. Values are
 296 represented by the mean \pm standard deviation in case of normal distribution (test with Q-Qplot,
 297 Skewness, Kurtosis), otherwise by the median [lower quartile (LQ)- upper quartile (UQ)].

298 **Table 2.** Descriptive characteristics of the sample
 299

Variables	Mean / Median	Standard Deviation / [LQ-UQ]
<i>Demographic and anthropometric</i>		
Sex n women (%)	29 (39%)	-
Age (years)	68.39	8.64
BMI (kg.m ²)	24.10	[20.61 - 28.30]
Education (years)	12.32	3.59
EPICES	22.77	[13.61 - 35.51]
<i>Pulmonary Function</i>		
FEV ₁ (L)	0.95	[0.80 - 1.18]
FEV ₁ (% pred)	38.30	[31.00 - 49.75]
FEV ₁ /FVC (%)	45.36	[37.93 - 50.81]
GOLD stage I n (%)	6 (8%)	-
GOLD stage II n (%)	14 (19%)	-
GOLD stage III n (%)	37 (50%)	-
GOLD stage IV n (%)	17 (23%)	-
<i>Psycho-cognitive variables</i>		
MOCA score	25	[23.00 - 27.00]
	Score 26 < n = 50 (68%)	
VQ11	34.30	7.92
MDP-SD	30.59	9.46
MDP-AD	28.50	[19 - 43.75]
<i>Exercise capacity</i>		
6MWT (in meters)	370.39	85.78
<i>Personality traits</i>		
Neuroticism	2.58	0.75
Extraversion	3.12	0.68
Openness	3.45	0.76
Agreeableness	4.14	0.46
Conscientiousness	3.84	0.52

Note. **Total N = 74**, **BMI**: body mass index, **FEV₁**: forced expiratory volume in one second; **FVC**: forced vital capacity; **GOLD**: global initiative for chronic obstructive lung disease

300
 301
 302
 303

304 *Evolution of clinical indicators during PR and associations with personality traits*

305 The evolution of each clinical indicators during PR is presented in table 3. The results of
 306 multiple linear regression analyses performed to test the association between personality traits
 307 and the evolution of clinical indicators during PR are presented in Table 4. These analyses did
 308 not highlight any significant association between personality traits and the evolution of exercise
 309 capacity, quality of life, sensory and affective dyspnea dimensions. Furthermore, no significant
 310 association was found when all traits were simultaneously entered in the same model (Table
 311 S1).

312
 313 **Table 3.** Evolution of clinical indicators during PR

Variables	T1 (Start of PR)	T2 (End of PR)	Δ
	Mean ± Standard Deviation Median [LQ;UQ]		
6MWT	371.43 ± 85.02	409.99 ± 90.75	36.50 [10.50; 61.50]
VQ11	34 [29.25;39.00]	29 [22.00; 34.00]	6 [2.00; 9.75]
MDP-SD	31 [24.00; 38.00]	22 [13.25; 32.00]	8 [1.25; 17]
MDP-AD	28.50 [19.00; 30.45]	17 [11.00; 25.00]	8 [-1.00; 23.50]

Note. LQ: lower quartile, UQ: upper quartile

Δ : relative difference between T2 and T1 score

314
 315
 316 **Table 4.** Summary of multiple regression analyses predicting the evolution of clinical indicators
 317 during PR from personality traits in baseline

Variables	Δ 6MWT	Δ VQ11	Δ MDP-SD	Δ MDP-AD
β p-values				
Neuroticism	0.08 _{ns} p=0.50	-0.01 _{ns} p=0.93	-0.12 _{ns} p=0.24	-0.12 _{ns} p=0.26
Extraversion	-0.08 _{ns} p=0.51	-0.06 _{ns} p=0.56	0.23 _{ns} p=0.02	0.11 _{ns} p=0.24
Openness	-0.01 _{ns} p=0.92	-0.16 _{ns} p=0.12	0.23 _{ns} p=0.03	0.16 _{ns} p=0.07
Agreeableness	-0.15 _{ns} p=0.24	-0.01 _{ns} p=0.93	0.07 _{ns} p=0.52	0.14 _{ns} p=0.15

Conscientiousness	-0.04 _{ns} p=0.74	0.06 _{ns} p=0.54	0.00 _{ns} p=0.96	-0.05 _{ns} p=0.55
-------------------	-------------------------------	------------------------------	------------------------------	-------------------------------

Note. Adjusted for age, sex, %FEV1, MoCA score, EPICES score, Education and T1 score
_{ns} = not significant according to the significance level defined at p ≤ 0.01

Δ : delta between T2 and T1 score

No significant association was found when all traits were simultaneously entered in the same model.

318
319

320 *Responders vs. Non-Responders and associations with personality traits*

321 According to MCIDs of exercise capacity during the program, 42 (57%) patients were
 322 categorized as responders, and 32 (43%) as non-responders. For health-related quality of life,
 323 59 (80%) COPD patients were classified as responders. For dyspnea, 50 (68%) and 58 (78%)
 324 patients were classified as responders on MDP-SD and MDP-AD respectively.

325 Logistic regression analyses revealed a significant association between openness and
 326 VQ11 response. Specifically, this result suggested that a high level of openness [OR = 0.36;
 327 95% confidence interval (CI) = 0.15 – 0.74] was associated with a lesser likelihood of
 328 responding on the VQ11 (Table 5). This relation did not remain significant when all traits were
 329 simultaneously entered into the adjusted logistic regression model (Table 6). No association
 330 between personality traits and 6MWT, MDP-SD and MDP-AD responses were found.

331

332 **Table 5.** Summary of logistic regression analyses predicting clinical indicators response from
 333 personality traits in baseline

Variables	Response to 6MWT	Response to VQ11	Response to MDP-SD	Response to MDP-AD
	<i>Odd Ratios 95% CI p-values</i>			
Neuroticism	0.99 _{ns} (0.59-1.69) p=0.97	1.01 _{ns} (0.51-2.08) p=0.97	0.71 _{ns} (0.37-1.29) p=0.26	0.67 _{ns} (0.30-1.47) p=0.32
Extraversion	0.57 _{ns} (0.30-0.99) p=0.06	0.69 _{ns} (0.33-1.33) p=0.29	1.86 _{ns} (0.98-3.77) p=0.07	1.35 _{ns} (0.64-2.96) p=0.44
Openness	1.08 _{ns} (0.65-1.82) p=0.76	0.36* (0.15-0.74)	2.11 _{ns} (1.10-4.50) p=0.03	2.69 _{ns} (1.27-6.81) p=0.02
Agreeableness	0.96 _{ns} (0.54-1.66) p=0.88	0.98 _{ns} (0.50-1.87) p=0.94	1.72 _{ns} (0.91-3.45) p=0.10	2.45 _{ns} (1.11-6.27) p=0.04
Conscientiousness	0.78 _{ns} (0.46-1.29) p=0.34	0.59 _{ns} (0.30-1.07) p=0.09	1.79 _{ns} (0.95-3.60) p=0.08	1.78 _{ns} (0.95-3.63) p=0.09

Note. Coefficients are standardized regression coefficients. 95% confidence intervals are in parentheses. Adjusted for age, sex%, FEV1, MoCA score, EPICES score, Education and T1 score
 * $p < .01$, *ns* = not significant according to the significance level defined at $p \leq .01$

334
 335
 336
 337

Table 6. Summary of logistic regression analyses predicting clinical indicators response from the five personality traits included in the same regression model

Variables	Response to 6MWT	Response to VQ11	Response to MDP-SD	Response to MDP-AD
	<i>Odd Ratios 95% CI p-values</i>			
Neuroticism	0.83 ns (0.43-1.57) $p=0.55$	0.49 ns (0.17-1.31) $p=0.17$	1.32 ns (0.58-3.27) $p=0.51$	1.38 ns (0.49-4.50) $p=0.56$
Extraversion	0.49 ns (0.24-0.91) $p=0.03$	0.91 ns (0.39-2.11) $p=0.82$	1.75 ns (0.80- 4.16) $p=0.18$	1.48 ns (0.55-4.61) $p=0.46$
Openness	1.44 ns (0.78-2.77) $p=0.25$	0.26 ns (0.07-0.68) $p=0.02$	1.53 ns (0.71- 3.58) $p=0.29$	2.19 ns (0.93-6.14) $p=0.10$
Agreeableness	0.81 ns (0.41-1.55) $p=0.53$	1.30 ns (0.54-3.20) $p=0.55$	1.76 ns (0.8- 4.23) $p=0.17$	2.41 ns (0.92-8.14) $p=0.10$
Conscientiousness	0.75 ns (0.42-1.30) $p=0.31$	0.60 ns (0.28-1.22) $p=0.16$	1.35 ns (0.67-2.85) $p=0.41$	1.19 ns (0.53-2.75) $p=0.67$

Note. Coefficients are standardized regression coefficients. 95% confidence intervals are in parentheses. Adjusted for age, sex%, FEV1, MoCA score, EPICES score, Education and T1 score
ns = not significant according to the significance level defined at $p \leq .01$

338
 339
 340
 341
 342
 343
 344
 345
 346
 347
 348

Good Responders vs. Poor Responders and associations with personality traits

Based on the composite response criteria defined in this study, 47 (62%) patients were classified as good responders and 27 (38%) as poor responders. Descriptive statistics for each group are presented in Table 7.

The independent sample t-tests and chi-squared performed to compare baseline characteristics between each group did not reveal any significant difference on socio-demographic, anthropometric, pulmonary function, and exercise capacity variables (Table 7). Regarding psycho-cognitive variables, good responders had significantly higher scores on the MDP-AD [$M_{\text{goodresponders}} = 33$ [21.50 - 46.50] versus $M_{\text{poorresponders}} = 22$ [14.50 - 28.50]; $W(72) = 405.5$, $p = <.01$], indicating a poorer affective dimension of dyspnea at baseline (Table 7).

349 Logistic regressions did not unveil a significant association between personality traits
 350 and PR composite response (Table 8). No significant association was found when all traits were
 351 simultaneously entered in the same model (Table S2).

352

353 **Table 7.** Patient characteristics according to Poor or Good Responder Profile
 354

Variables	Poor responders n = 27	Good responders n = 47	p-values
<i>Demographic and anthropometric variables</i>			
Sex n(% women)	10 (37%)	19 (40%)	.77ns
Age (years)	69.11 ± 10.85	67.98 ± 7.18	.63ns
BMI (kg.m ²)	24.31 [19.35-27.15]	23.89 [21.33-28.45]	.68ns
Education (in years)	12.09 ± 3.90	12.45 ± 3.43	.70ns
EPICES score	22.48 [13.61-29.97]	23.07 [13.61-39.64]	.48ns
<i>Pulmonary Function variables</i>			
FEV ₁ (L/min)	0.95 [0.74-1.14]	0.95 [0.82 -1.92]	.78ns
FEV ₁ (% pred)	37 [31-48.50]	40 [30 -50.02]	.78ns
FEV ₁ /FVC (%)	45.65 [35.36-51.75]	45.26 [39.51-50.31]	.84ns
GOLD stage I n (%)	1 (2%)	3 (6%)	.42ns
GOLD stage II n (%)	5 (26%)	19 (21%)	-
GOLD stage III n (%)	16 (46%)	59 (45%)	-
GOLD stage IV n (%)	5 (26%)	19 (28%)	-
<i>Psycho-cognitive variables</i>			
MOCA score	25.19 ± 2.80	24.85 ± 3.02	.63ns
VQ11	32.22 ± 7.95	35.49 ± 7.74	.09ns
MDP-SD	28[23.50 -32.50]	34[26.50-39]	.03ns
MDP-AD	22[14.50 -28.50]	33[21.50-46.50]	.01*
<i>Exercise capacity</i>			
6MWT (in meters)	381.07 ± 71.24	365.89 ± 92.29	.43ns
Note. BMI: body mass index, FEV ₁ : forced expiratory volume in one second; FVC: forced vital capacity; TLC: total lung capacity; GOLD: global initiative for chronic obstructive lung disease * p < .01, ns = not significant according to the significance level defined at p ≤.01			

355

356

357 **Table 8.** Summary of logistic regression analyses predicting PR composite response from
 358 personality traits at baseline

Variables	Response to PR (Poor Responders = 0 and Good Responders = 1)		
	Odds Ratios	95% CI	p-values
Neuroticism	1.15ns	(0.70-1.94)	p=0.57

Extraversion	0.87 ns (0.51-1.45) $p=0.59$
Openness	1.26 ns (0.77-2.12) $p=0.37$
Agreeableness	1.17 ns (0.68-2.01) $P=0.57$
Conscientiousness	1.09 ns (0.66-1.78) $p=0.74$

Note. Coefficients are standardized regression coefficients. 95% confidence intervals are in parentheses. Adjusted for age, sex, %FEV1, MoCA score, EPICES score and Education
 ns = not significant according to the significance level defined at $p \leq 0.01$
No significant association was found when all traits were simultaneously entered in the same model.

359

360 Discussion

361 The objective of the present study was to assess, for the first time, relationships between
362 personality traits, as defined by the Five-Factor Model, and effectiveness of inpatient-PR on
363 exercise tolerance, quality of life and dyspnea in persons with COPD. Consistent with our
364 hypothesis, this study shows that personality traits are likely to modulate the effectiveness of
365 the therapeutic intervention. In particular, a high level of openness to experience was associated
366 with a lesser likelihood of responding to PR on quality of life. No association was found
367 between the other traits and PR outcomes. In addition, none of the traits were associated with
368 PR composite response.

369 Thus, our study suggests that openness to experiences could be a risk factor for non-
370 response to PR on quality of life. This result was unexpected because most studies that
371 identified links between openness and therapeutic intervention effectiveness usually reported
372 that this trait was a protective factor [38-40]. For example, a high level of openness increases
373 the benefits from a nonpharmacological breathlessness intervention in persons with
374 intrathoracic cancer [39]. In addition, it was positively associated with intervention
375 effectiveness for cognitive impairment in older adults [40] and with decreased depression
376 severity upon treatment completion [38]. Regarding quality of life, the few studies that
377 investigated the relationship with openness to experiences following a clinical intervention
378 reported inconsistent results. For example, while a high level of openness was significantly

379 associated with a poorer quality of life 6 months after breast reconstruction [41], no association
380 was evidenced in women with Breast Cancer 1 and 2 mutations, after risk-reducing salpingo-
381 oophorectomy [42]. This lack of consensus might be explained by the fact that these
382 associations could be related to contextual factors. Indeed, our results can partly be interpreted
383 in light of the very specific context of inpatient-PR, which could interfere with the
384 psychological needs of these individuals. For example, the highly supervised environment of
385 inpatient PR imposes some restrictions (i.e., monitored outings and visits, strict daily
386 schedule...), which do not align with the personal values of independence in thoughts and
387 actions of individuals with a high level of openness [43]. Moreover, repeating the same
388 activities during a 5-week period could create a routine, lacking stimulation for those
389 individuals constantly looking for new and unusual experiences [14]. Therefore, the poor match
390 between the openness trait and inpatient-PR environment specificities could interfere with the
391 effectiveness of the therapeutic intervention. To test the validity of this hypothesis, it could be
392 interesting to identify whether these associations between openness and PR response would be
393 similar in the context of more independent therapeutic modalities such as outpatient or home-
394 based program.

395 The lack of associations with the other traits of the Five-Factor Model in the present
396 research is surprising since previous studies, investigating the role of personality in chronic
397 disease [23,44] or mental health [45-47] clinical outcomes, showed that neuroticism [23,44-
398 47], conscientiousness [44,46,47], extraversion and agreeableness [44,46] were likely to
399 modulate the effect of therapeutic management. To date, few studies have investigated the
400 mediating mechanisms underlying which traits could influence response to treatment [48].
401 However, consistent associations between traits and behaviors that could influence a
402 therapeutic management, such as adherence to treatment protocol [20,21,49-51] were
403 identified. Nevertheless, the context of inpatient-PR, given these constraining characteristics
404 (i.e., supervision by a multitude of healthcare professionals, care setting rules) offers few
405 opportunities for patients to express their own individual behavioral patterns. Inpatient-PR
406 could thus constitute a poor environment for the expression of these personality traits. In order
407 to test this hypothesis, it might be interesting to identify associations between personality traits
408 and more specific behaviors such as PR program dropout rates, level of engagement in
409 therapeutic management or participation in sessions. Moreover, future studies should
410 investigate the associations between personality traits and PR response in management settings
411 where individual patient behaviors (e.g., therapeutic adherence) are central to the success of the
412 program such as outpatient-PR or telerehabilitation.

413 In addition to the scientific relevance of improved understanding of psychological
414 factors that may influence PR effectiveness [52-55], the results could also have practical clinical
415 implications. Indeed, the association identified in this study represents the first basis for
416 improving the response on the quality-of-life dimension, which is one of the most important
417 domains given its association with mortality in persons with COPD [56,57]. Assessing the
418 openness to experience trait could help clinicians better target individuals less likely to benefit
419 from the PR intervention on the quality-of-life and thus reinforce prevention for these patients.
420 With this objective in mind, additional research to determine cut-off scores for this trait, to
421 detect the most vulnerable patients, would be highly relevant. Moreover, the differential
422 effectiveness of a PR program according to one's personality emphasizes the importance to
423 tailor non-pharmacological therapy to individual characteristics. In this perspective, future
424 studies should help define which are the most suitable PR modalities and contents according to
425 one's dispositions, including personality traits.

426

427 *Strengths and methodological considerations*

428 The present study has several strengths that include the investigation of PR effectiveness
429 through both physiological and psychological indicators. Moreover, we analyzed PR effects
430 using two complementary methodological approaches (evolution versus response). Finally, this
431 study is one of the few to propose a composite indicator of PR response, which is more
432 representative of the multiple objectives of this intervention. Some methodological
433 considerations deserve some special attention. First, for the sake of statistical rigor, we chose
434 to lower our significance threshold to 0.01. Nevertheless, results that did not express themselves
435 according to the threshold we imposed may deserve more attention. Replication studies would
436 be relevant to identify which results would be consistent. Moreover, the validity of MCIDs
437 [37] used to categorize responders and non-responders on dyspnea dimensions are questionable
438 since they were not defined after a clinical intervention. However, they were the only MCIDs
439 available and published to date. Finally, due to the lack of composite indicators in the literature,
440 the methodology used to categorize good and poor responders, was defined in an arbitrary
441 manner. Despite this limit, the resulting proportion of responders (62%) and non-responders
442 (38%) is consistent with previous studies that reported a response rate of over 50% [5,6,8,10].
443 Furthermore, findings pointing to good responders having lower affective dimension scores
444 compared with poor responders is in line with previous studies that found a poorer health status
445 at baseline in good responders, including dyspnea [7,58].

446

447

448

449 **Conclusion**

450 To sum up, identifying the determinants of PR effectiveness represents a major human,
451 clinical and economic challenge. The present study shows that investigating personality traits
452 as defined by the Five-Factor Model constitutes an interesting perspective to understand the
453 heterogeneity observed in PR response. Specifically, our results indicate that high openness is
454 associated with a lower likelihood of responding to PR on health-related quality of life. Thus,
455 this study highlights the existence of new psychological factors that could be taken into account
456 to design new strategies for individualized care pathways. However, additional research is
457 needed to implement these findings in clinical practice.

458

459 **AUTHOR CONTRIBUTIONS**

460 P.C, N.H, V.M and F.A conceived and designed research. P.C performed experiments and
461 analyzed data. P.C, N.H, V.M and F.A interpreted results of experiments. P.C prepared tables
462 and drafted manuscript. N.H, F.A and V.M edited and revised manuscript. P.C, N.H, V.M and
463 F.A approved final version of manuscript.

464

465 **ACKNOWLEDGEMENTS**

466 The authors would like to thank the experts of the Korian research committee for their precious
467 advice. Moreover, the authors kindly thank all the volunteer participants who made this study
468 possible. Finally, we also gratefully acknowledge the different clinical teams of the Clinique
469 du Souffle La Vallonie for facilitating the implementation and the organization of this study
470 within the pulmonary rehabilitation center. The authors also thank Bénédicte Clément
471 (medical/science translator; EU agreement) for English editing.

472

473 **FUNDING**

474 The project was financially supported by the French Agency for Research and Technology
475 [ANRT, CIFRE 2018/0198]. The sponsor had no influence on the conduct of this study, the
476 analysis of the data, or the writing of this report.

477

478 **DISCLOSURE**

479 The authors declare no conflicts of interest financial or otherwise. The results of this study are
480 presented clearly, honestly, and without fabrication, falsification, or inappropriate data
481 manipulation.

482

483 **References**

484 [1] Spruit, M. A., Singh, S. J., Garvey, C., ZuWallack, R., Nici, L., Rochester, C., Hill, K.,
485 Holland, A. E., Lareau, S. C., Man, W. D., Pitta, F., Sewell, L., Raskin, J., Bourbeau, J., Crouch,
486 R., Franssen, F. M., Casaburi, R., Vercoulen, J. H., Vogiatzis, I., Gosselink, R., ... ATS/ERS
487 Task Force on Pulmonary Rehabilitation (2013). An official American Thoracic
488 Society/European Respiratory Society statement: key concepts and advances in pulmonary
489 rehabilitation. *American journal of respiratory and critical care medicine*, 188(8), e13–e64.
490 <https://doi.org/10.1164/rccm.201309-1634ST>

491

492 [2] Gordon, C. S., Waller, J. W., Cook, R. M., Cavallera, S. L., Lim, W. T., & Osadnik, C. R.
493 (2019). Effect of Pulmonary Rehabilitation on Symptoms of Anxiety and Depression in COPD:
494 A Systematic Review and Meta-Analysis. *Chest*, 156(1), 80–91.
495 <https://doi.org/10.1016/j.chest.2019.04.009>

496

497 [3] Lacasse, Y., Martin, S., Lasserson, T. J., & Goldstein, R. S. (2007). Meta-analysis of
498 respiratory rehabilitation in chronic obstructive pulmonary disease. A Cochrane systematic
499 review. *Europa medicophysica*, 43(4), 475–485.
500 <https://doi.org/10.1002/14651858.CD003793.pub2>

501

502 [4] McCarthy, B., Casey, D., Devane, D., Murphy, K., Murphy, E., & Lacasse, Y. (2015).
503 Pulmonary rehabilitation for chronic obstructive pulmonary disease. *The Cochrane database of*
504 *systematic reviews*, (2), CD003793. <https://doi.org/10.1002/14651858.CD003793.pub3>

505

506 [5] Garrod, R., Marshall, J., Barley, E., & Jones, P. W. (2006). Predictors of success and failure
507 in pulmonary rehabilitation. *The European respiratory journal*, 27(4), 788–794.
508 <https://doi.org/10.1183/09031936.06.00130605>

509

510 [6] Scott, A. S., Baltzan, M. A., Fox, J., & Wolkove, N. (2010). Success in pulmonary
511 rehabilitation in patients with chronic obstructive pulmonary disease. *Canadian respiratory*
512 *journal*, 17(5), 219–223. <https://doi.org/10.1155/2010/203236>

513

514 [7] Spruit, M. A., Augustin, I. M., Vanfleteren, L. E., Janssen, D. J., Gaffron, S., Pennings, H.
515 J., Smeenk, F., Pieters, W., van den Bergh, J. J., Michels, A. J., Groenen, M. T., Rutten, E. P.,
516 Wouters, E. F., Franssen, F. M., & CIRO+ Rehabilitation Network (2015). Differential
517 response to pulmonary rehabilitation in COPD: multidimensional profiling. *The European*
518 *respiratory journal*, 46(6), 1625–1635. <https://doi.org/10.1183/13993003.00350-2015>

519

520 [8] Troosters, T., Gosselink, R., & Decramer, M. (2001). Exercise training in COPD: how to
521 distinguish responders from nonresponders. *Journal of cardiopulmonary rehabilitation*, 21(1),
522 10–17. <https://doi.org/10.1097/00008483-200101000-00004>

523

524 [9] Crisafulli, E., Costi, S., Luppi, F., Cirelli, G., Cilione, C., Coletti, O., Fabbri, L. M., & Clini,
525 E. M. (2008). Role of comorbidities in a cohort of patients with COPD undergoing pulmonary
526 rehabilitation. *Thorax*, 63(6), 487–492. <https://doi.org/10.1136/thx.2007.086371>

527

528 [10] Ragaselvi, S., Janmeja, A. K., Aggarwal, D., Sidana, A., & Sood, P. (2019). Predictors of
529 response to pulmonary rehabilitation in stable chronic obstructive pulmonary disease patients:
530 A prospective cohort study. *Journal of postgraduate medicine*, 65(2), 101–106.
531 https://doi.org/10.4103/jpgm.JPGM_433_18

532

533 [11] Vagaggini, B., Costa, F., Antonelli, S., De Simone, C., De Cusatis, G., Martino, F.,
534 Santerini, S., & Paggiaro, P. (2009). Clinical predictors of the efficacy of a pulmonary
535 rehabilitation programme in patients with COPD. *Respiratory medicine*, 103(8), 1224–1230.
536 <https://doi.org/10.1016/j.rmed.2009.01.023>

537

538 [12] Walsh, J. R., McKeough, Z. J., Morris, N. R., Chang, A. T., Yerkovich, S. T., Seale, H. E.,
539 & Paratz, J. D. (2013). Metabolic disease and participant age are independent predictors of
540 response to pulmonary rehabilitation. *Journal of cardiopulmonary rehabilitation and*
541 *prevention*, 33(4), 249–256. <https://doi.org/10.1097/HCR.0b013e31829501b7>

542

543 [13] Digman, J. M. (1990). Personality structure: Emergence of the five-factor model. Annual
544 review of psychology, 41(1), 417–440. <https://doi.org/10.1146/annurev.ps.41.020190.002221>

545

546 [14] McCrae, R. R., & John, O. P. (1992). An introduction to the five-factor model and its
547 applications. *Journal of personality*, 60(2), 175–215. [https://doi.org/10.1111/j.1467-](https://doi.org/10.1111/j.1467-6494.1992.tb00970.x)
548 [6494.1992.tb00970.x](https://doi.org/10.1111/j.1467-6494.1992.tb00970.x)

549

550 [15] McCrae, R. R., & Costa, P. T. (2006). Perspectives de la théorie des cinq facteurs (TCF):
551 traits et culture. *Psychologie française*, 51(3), 227–244. [https://doi.org/10.1016/j.psfr.](https://doi.org/10.1016/j.psfr.2005.09.001)
552 [2005.09.001](https://doi.org/10.1016/j.psfr.2005.09.001)

553

554 [16] Hirsh, J. B., Quilty, L. C., Bagby, R. M., & McMain, S. F. (2012). The relationship between
555 agreeableness and the development of the working alliance in patients with borderline
556 personality disorder. *Journal of personality disorders*, 26(4), 616–627.
557 <https://doi.org/10.1521/pedi.2012.26.4.616>

558

559 [17] Nezlek, J. B., Schütz, A., Schröder-Abé, M., & Smith, C. V. (2011). A cross-cultural study
560 of relationships between daily social interaction and the five-factor model of
561 personality. *Journal of personality*, 79(4), 811–840. [https://doi.org/10.1111/j.1467-](https://doi.org/10.1111/j.1467-6494.2011.00706.x)
562 [6494.2011.00706.x](https://doi.org/10.1111/j.1467-6494.2011.00706.x)

563

564 [18] Bègue, L., Beauvois, J. L., Courbet, D., Oberlé, D., Lepage, J., & Duke, A. A. (2015).
565 Personality predicts obedience in a Milgram paradigm. *Journal of personality*, 83(3), 299–306.
566 <https://doi.org/10.1111/jopy.12104>

567

568 [19] Gebauer, J. E., Bleidorn, W., Gosling, S. D., Rentfrow, P. J., Lamb, M. E., & Potter, J.
569 (2014). Cross-cultural variations in big five relationships with religiosity: a sociocultural
570 motives perspective. *Journal of personality and social psychology*, 107(6), 1064–1091.
571 <https://doi.org/10.1037/a0037683>

572

573 [20] Axelsson, M., Brink, E., Lundgren, J., & Lötvall, J. (2011). The influence of personality
574 traits on reported adherence to medication in individuals with chronic disease: an
575 epidemiological study in West Sweden. *PloS one*, 6(3), e18241.
576 <https://doi.org/10.1371/journal.pone.0018241>

577
578
579
580
581
582
583
584
585
586
587
588
589
590
591
592
593
594
595
596
597
598
599
600
601
602
603
604
605
606
607
608
609
610
611
612
613
614
615
616
617
618
619
620
621
622
623
624
625
626

- [21] Axelsson, M., Cliffordson, C., Lundbäck, B., & Lötvall, J. (2013). The function of medication beliefs as mediators between personality traits and adherence behavior in people with asthma. *Patient preference and adherence*, 7, 1101–1109. <https://doi.org/10.2147/PPA.S49725>
- [22] Hill, P. L., & Roberts, B. W. (2011). The role of adherence in the relationship between conscientiousness and perceived health. *Health psychology : official journal of the Division of Health Psychology, American Psychological Association*, 30(6), 797–804. <https://doi.org/10.1037/a0023860>
- [23] Rouch, I., Pongan, E., Leveque, Y., Tillmann, B., Trombert, B., Getenet, J. C., Auguste, N., Krolak-Salmon, P., LACMé group, Laurent, B., & Dorey, J. M. (2018). Personality Modulates the Efficacy of Art Intervention on Chronic Pain in a Population of Patients with Alzheimer's Disease. *Journal of Alzheimer's disease : JAD*, 63(2), 617–624. <https://doi.org/10.3233/JAD-170990>
- [24] Hilliard, R. C., Brewer, B. W., Cornelius, A. E., & Van Raalte, J. L. (2014). Big Five Personality Characteristics and Adherence to Clinic-Based Rehabilitation Activities after ACL Surgery: A Prospective Analysis. *The open rehabilitation journal*, 7, 1–5. <https://doi.org/10.2174/1874943701407010001>
- [25] Sutin, A. R., Stephan, Y., Luchetti, M., Artese, A., Oshio, A., & Terracciano, A. (2016). The Five-Factor Model of Personality and Physical Inactivity: A Meta-Analysis of 16 Samples. *Journal of research in personality*, 63, 22–28. <https://doi.org/10.1016/j.jrp.2016.05.001>
- [26] Wilson, K. E., & Dishman, R. K. (2015). Personality and physical activity: A systematic review and meta-analysis. *Personality and Individual Differences*, 72, 230–242. <https://doi.org/10.1016/j.paid.2014.08.023>
- [27] Plaisant, O., Courtois, R., Réveillère, C., Mendelsohn, G. A., & John, O. P. (2010, March). Validation par analyse factorielle du Big Five Inventory français (BFI-Fr). Analyse convergente avec le NEO-PI-R. In *Annales Médico-psychologiques, revue psychiatrique* (Vol. 168, No. 2, pp. 97–106). Elsevier Masson. <https://doi.org/10.1016/j.amp.2009.09.003>
- [28] Sass, C., Guéguen, R., Moulin, J., Abric, L., Dauphinot, V., Dupré, C .. & Gerbaud, L. (2006). Comparaison du score individuel de précarité des Centres d'examens de santé, EPICES, à la définition socio-administrative de la précarité. *Santé Publique*, 4(4), 513–522. <https://doi.org/10.3917/spub.064.0513>
- [29] Nasreddine, Z. S., Phillips, N. A., Bédirian, V., Charbonneau, S., Whitehead, V., Collin, I., Cummings, J. L., & Chertkow, H. (2005). The Montreal Cognitive Assessment, MoCA: a brief screening tool for mild cognitive impairment. *Journal of the American Geriatrics Society*, 53(4), 695–699. <https://doi.org/10.1111/j.1532-5415.2005.53221.x>
- [30] Ninot, G., Soyeze, F., Fiocco, S., Nassih, K., Morin, A. J., & Prefaut, C. (2010). Le VQ11, un questionnaire de qualité de vie spécifique à la BPCO utilisable en clinique [The VQ11, a short health-related quality of life questionnaire for routine practice in COPD patients]. *Revue des maladies respiratoires*, 27(5), 472–481. <https://doi.org/10.1016/j.rmr.2010.03.020>

627
628
629
630
631
632
633
634
635
636
637
638
639
640
641
642
643
644
645
646
647
648
649
650
651
652
653
654
655
656
657
658
659
660
661
662
663
664
665
666
667
668
669
670
671
672
673
674
675
676

[31] Banzett, R. B., O'Donnell, C. R., Guilfoyle, T. E., Parshall, M. B., Schwartzstein, R. M., Meek, P. M., Gracely, R. H., & Lansing, R. W. (2015). Multidimensional Dyspnea Profile: an instrument for clinical and laboratory research. *The European respiratory journal*, *45*(6), 1681–1691. <https://doi.org/10.1183/09031936.00038914>

[32] Meek, P. M., Banzett, R., Parsall, M. B., Gracely, R. H., Schwartzstein, R. M., & Lansing, R. (2012). Reliability and validity of the multidimensional dyspnea profile. *Chest*, *141*(6), 1546–1553. <https://doi.org/10.1378/chest.11-1087>

[33] Morélot-Panzini, C., Gilet, H., Aguilaniu, B., Devillier, P., Didier, A., Perez, T., Pignier, C., Arnould, B., & Similowski, T. (2016). Real-life assessment of the multidimensional nature of dyspnoea in COPD outpatients. *The European respiratory journal*, *47*(6), 1668–1679. <https://doi.org/10.1183/13993003.01998-2015>

[34] Puhan, M. A., Chandra, D., Mosenifar, Z., Ries, A., Make, B., Hansel, N. N., Wise, R. A., Sciruba, F., & National Emphysema Treatment Trial (NETT) Research Group (2011). The minimal important difference of exercise tests in severe COPD. *The European respiratory journal*, *37*(4), 784–790. <https://doi.org/10.1183/09031936.00063810>

[35] Singh, S. J., Puhan, M. A., Andrianopoulos, V., Hernandez, N. A., Mitchell, K. E., Hill, C. J., Lee, A. L., Camillo, C. A., Troosters, T., Spruit, M. A., Carlin, B. W., Wanger, J., Pepin, V., Saey, D., Pitta, F., Kaminsky, D. A., McCormack, M. C., MacIntyre, N., Culver, B. H., Sciruba, F. C., ... Holland, A. E. (2014). An official systematic review of the European Respiratory Society/American Thoracic Society: measurement properties of field walking tests in chronic respiratory disease. *The European respiratory journal*, *44*(6), 1447–1478. <https://doi.org/10.1183/09031936.00150414>

[36] Coquart, J. B., Heutte, N., Terce, G., & Grosbois, J. M. (2019). Convergent Validity and Minimal Clinically Important Difference of the Maugeri Foundation Respiratory Failure Questionnaire (MRF-28) and the Chronic Obstructive Pulmonary Disease-Specific Health-Related Quality of Life questionnaire (VQ11). *International journal of chronic obstructive pulmonary disease*, *14*, 2895–2903. <https://doi.org/10.2147/COPD.S222165>

[37] Ekström, M. P., Bornefalk, H., Sköld, C. M., Janson, C., Blomberg, A., Bornefalk-Hermansson, A., Igelström, H., Sandberg, J., & Sundh, J. (2020). Minimal Clinically Important Differences and Feasibility of Dyspnea-12 and the Multidimensional Dyspnea Profile in Cardiorespiratory Disease. *Journal of pain and symptom management*, *60*(5), 968–975.e1. <https://doi.org/10.1016/j.jpainsymman.2020.05.028>

[38] Bagby, R. M., Quilty, L. C., Segal, Z. V., McBride, C. C., Kennedy, S. H., & Costa, P. T. (2008). Personality and differential treatment response in major depression: a randomized controlled trial comparing cognitive-behavioural therapy and pharmacotherapy. *Canadian journal of psychiatry. Revue canadienne de psychiatrie*, *53*(6), 361–370. <https://doi.org/10.1177/070674370805300605>

[39] Johnson, M. J., Nabb, S., Booth, S., & Kanaan, M. (2020). Openness Personality Trait Associated With Benefit From a Nonpharmacological Breathlessness Intervention in People With Intrathoracic Cancer: An Exploratory Analysis. *Journal of pain and symptom management*, *59*(5), 1059–1066.e2. <https://doi.org/10.1016/j.jpainsymman.2020.01.006>

- 677
678 [40] Marr, C., Vaportzis, E., Dewar, M., & Gow, A. J. (2020). Investigating associations
679 between personality and the efficacy of interventions for cognitive ageing: A systematic
680 review. *Archives of gerontology and geriatrics*, 87, 103992.
681 <https://doi.org/10.1016/j.archger.2019.103992>
682
- 683 [41] Juhl, A. A., Damsgaard, T. E., O'Connor, M., Christensen, S., & Zachariae, R. (2017).
684 Personality Traits as Predictors of Quality of Life and Body Image after Breast
685 Reconstruction. *Plastic and reconstructive surgery. Global open*, 5(5), e1341.
686 <https://doi.org/10.1097/GOX.0000000000001341>
687
- 688 [42] Stanisiz, M., Schneider-Matyka, D., Panczyk, M., Braneczka-Woźniak, D., Kurzawa, R.,
689 Knyszyńska, A., & Grochans, E. (2020). Can personality traits affect the quality of life of
690 women with the BRCA1/BRCA2 mutations before and after prophylactic
691 adnexectomy?. *European review for medical and pharmacological sciences*, 24(23), 12342–
692 12349. https://doi.org/10.26355/eurev_202012_24028
693
- 694 [43] Parks-Leduc, L., Feldman, G., & Bardi, A. (2015). Personality traits and personal values:
695 a meta-analysis. *Personality and social psychology review : an official journal of the Society*
696 *for Personality and Social Psychology, Inc*, 19(1), 3–29.
697 <https://doi.org/10.1177/1088868314538548>
698
- 699 [44] Franks, P., Chapman, B., Duberstein, P., & Jerant, A. (2009). Five factor model personality
700 factors moderated the effects of an intervention to enhance chronic disease management self-
701 efficacy. *British journal of health psychology*, 14(Pt 3), 473–487.
702 <https://doi.org/10.1348/135910708X360700>
703
- 704 [45] Bartolomei, J., Baeriswyl-Cottin, R., Framorando, D., Zanello, A., Bacchetta, J. P.,
705 Herrmann, F., & Sentissi, O. (2020). Personality Factors and Attachment Styles as Predictors
706 of the Therapeutic Efficacy of a Short-Term Ambulatory Intervention for Depression. *Journal*
707 *of psychiatric practice*, 26(1), 3–16. <https://doi.org/10.1097/PRA.0000000000000442>
708
- 709 [46] Bucher, M. A., Suzuki, T., & Samuel, D. B. (2019). A meta-analytic review of personality
710 traits and their associations with mental health treatment outcomes. *Clinical psychology*
711 *review*, 70, 51–63. <https://doi.org/10.1016/j.cpr.2019.04.002>
712
- 713 [47] Hengartner, M. P., von Wyl, A., Heiniger Haldimann, B., & Yamanaka-Altenstein, M.
714 (2020). Personality Traits and Psychopathology Over the Course of Six Months of Outpatient
715 Psychotherapy: A Prospective Observational Study. *Frontiers in psychology*, 11, 174.
716 <https://doi.org/10.3389/fpsyg.2020.00174>
717
- 718 [48] Kushner, S. C., Quilty, L. C., Uliaszek, A. A., McBride, C., & Bagby, R. M. (2016).
719 Therapeutic alliance mediates the association between personality and treatment outcome in
720 patients with major depressive disorder. *Journal of affective disorders*, 201, 137–144.
721 <https://doi.org/10.1016/j.jad.2016.05.016>
722
- 723 [49] Christensen, A. J., & Smith, T. W. (1995). Personality and patient adherence: correlates of
724 the five-factor model in renal dialysis. *Journal of behavioral medicine*, 18(3), 305–313.
725 <https://doi.org/10.1007/BF01857875>
726

- 727 [50] Molloy, G. J., O'Carroll, R. E., & Ferguson, E. (2014). Conscientiousness and medication
728 adherence: a meta-analysis. *Annals of behavioral medicine : a publication of the Society of*
729 *Behavioral Medicine*, 47(1), 92–101. <https://doi.org/10.1007/s12160-013-9524-4>
730
- 731 [51] Wheeler, K., Wagaman, A., & McCord, D. (2012). Personality traits as predictors of
732 adherence in adolescents with type I diabetes. *Journal of child and adolescent psychiatric*
733 *nursing : official publication of the Association of Child and Adolescent Psychiatric Nurses,*
734 *Inc*, 25(2), 66–74. <https://doi.org/10.1111/j.1744-6171.2012.00329.x>
735
- 736 [52] Chevance, G., Héraud, N., Varray, A., & Boiché, J. (2018). Implicit attitudes and the
737 improvement of exercise capacity during pulmonary rehabilitation. *Psychology, health &*
738 *medicine*, 23(7), 831–839. <https://doi.org/10.1080/13548506.2018.1447137>
739
- 740 [53] Selzler, A. M., Rodgers, W. M., Berry, T. R., & Stickland, M. K. (2016). The importance
741 of exercise self-efficacy for clinical outcomes in pulmonary rehabilitation. *Rehabilitation*
742 *psychology*, 61(4), 380–388. <https://doi.org/10.1037/rep0000106>
743
- 744 [54] Zoeckler, N., Kenn, K., Kuehl, K., Stenzel, N., & Rief, W. (2014). Illness perceptions
745 predict exercise capacity and psychological well-being after pulmonary rehabilitation in COPD
746 patients. *Journal of psychosomatic research*, 76(2), 146–151.
747 <https://doi.org/10.1016/j.jpsychores.2013.11.021>
748
- 749 [55] Arnold, R., Ranchor, A. V., Koëter, G. H., de Jongste, M. J., Wempe, J. B., ten Hacken,
750 N. H., Otten, V., & Sanderman, R. (2006). Changes in personal control as a predictor of quality
751 of life after pulmonary rehabilitation. *Patient education and counseling*, 61(1), 99–108.
752 <https://doi.org/10.1016/j.pec.2005.02.015>
753
- 754 [56] Halpin, D. M., Peterson, S., Larsson, T. P., & Calverley, P. M. (2008). Identifying COPD
755 patients at increased risk of mortality: predictive value of clinical study baseline
756 data. *Respiratory medicine*, 102(11), 1615–1624. <https://doi.org/10.1016/j.rmed.2008.05.007>
757
- 758 [57] Havlucu, Y., Yorgancioglu, A., Sakar Coskun, A., & Celik, P. (2019). Does one year
759 change in quality of life predict the mortality in patients with chronic obstructive pulmonary
760 disease?-Prospective cohort study. *Journal of thoracic disease*, 11(8), 3626–3632.
761 <https://doi.org/10.21037/jtd.2019.07.89>
762
- 763 [58] Costi, S., Crisafulli, E., Trianni, L., Beghè, B., Faverzani, S., Scopelliti, G., Chetta, A., &
764 Clini, E. (2019). Baseline Exercise Tolerance and Perceived Dyspnea to Identify the Ideal
765 Candidate to Pulmonary Rehabilitation: A Risk Chart in COPD Patients. *International journal*
766 *of chronic obstructive pulmonary disease*, 14, 3017–3023.
767 <https://doi.org/10.2147/COPD.S223038>
768
769
770